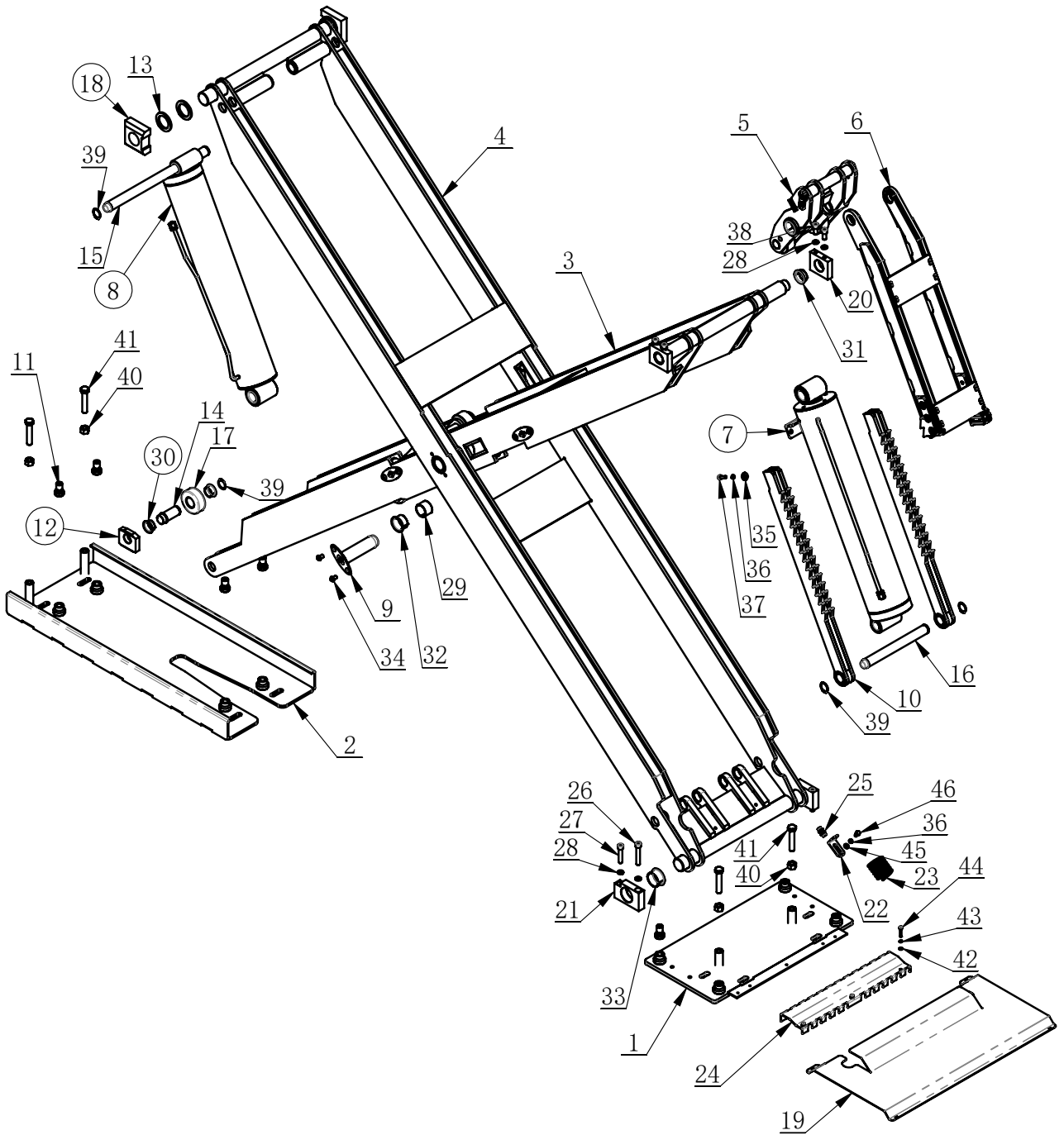
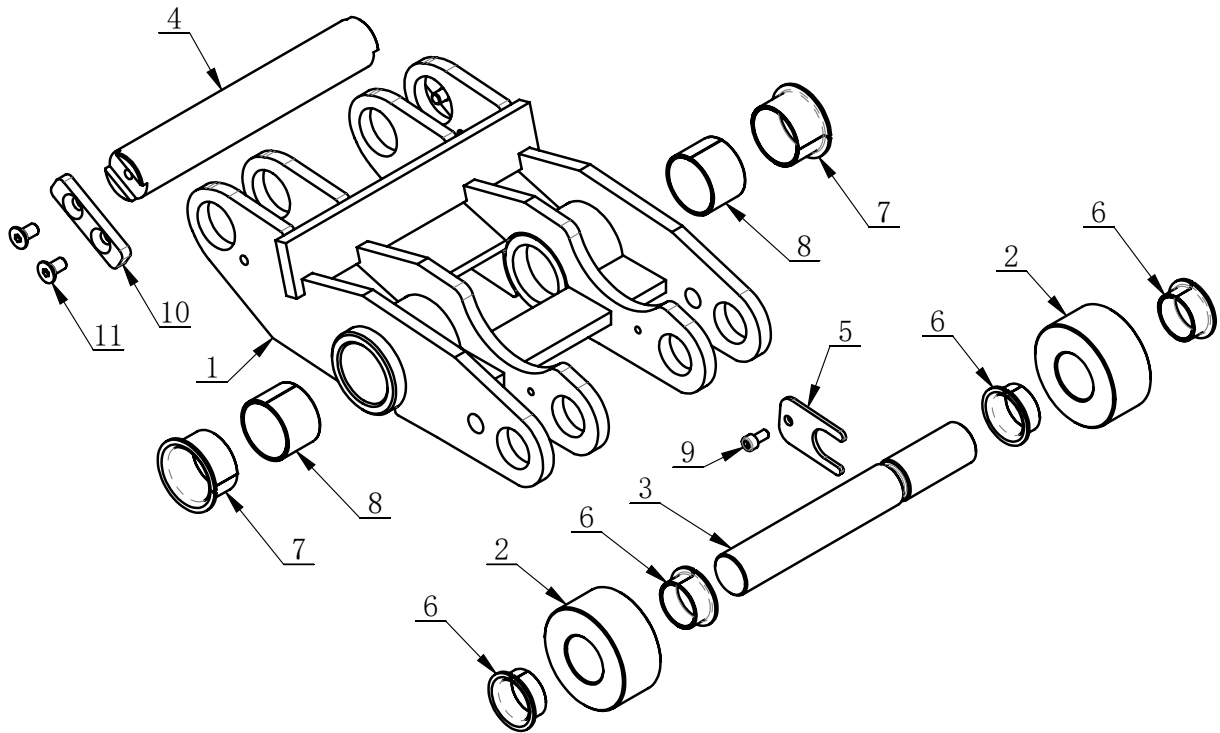


CM5500-A/AL Spare Parts

ITEM NO.	PART NUMBER	DESCRIPTION	QTY.
1	J301-1100000	Front Base	2
2	J302-1200000	Platform left	1
3	J302-1300000	Platform right	1
4	J302-1600000	Control - Box	1
5	J302-1700000	Connection Hoses	1
6	J302-4300000	Oil plug assembly	1
7	J301-5000000	Leveling components	1
8	J301-7000000	Plastic expansion screw	36
9	J301-1000002	Hose Cover	2
10	J301-1000003	Middle Hose Cover	1
11	J401-1000004	Rubber Pads	4
12	J301-1000020	Hoses Holder	4
13	FPY 6	UNION Y	3
14	C-54-8000011	AIR SUPPLY CONNECTOR	1



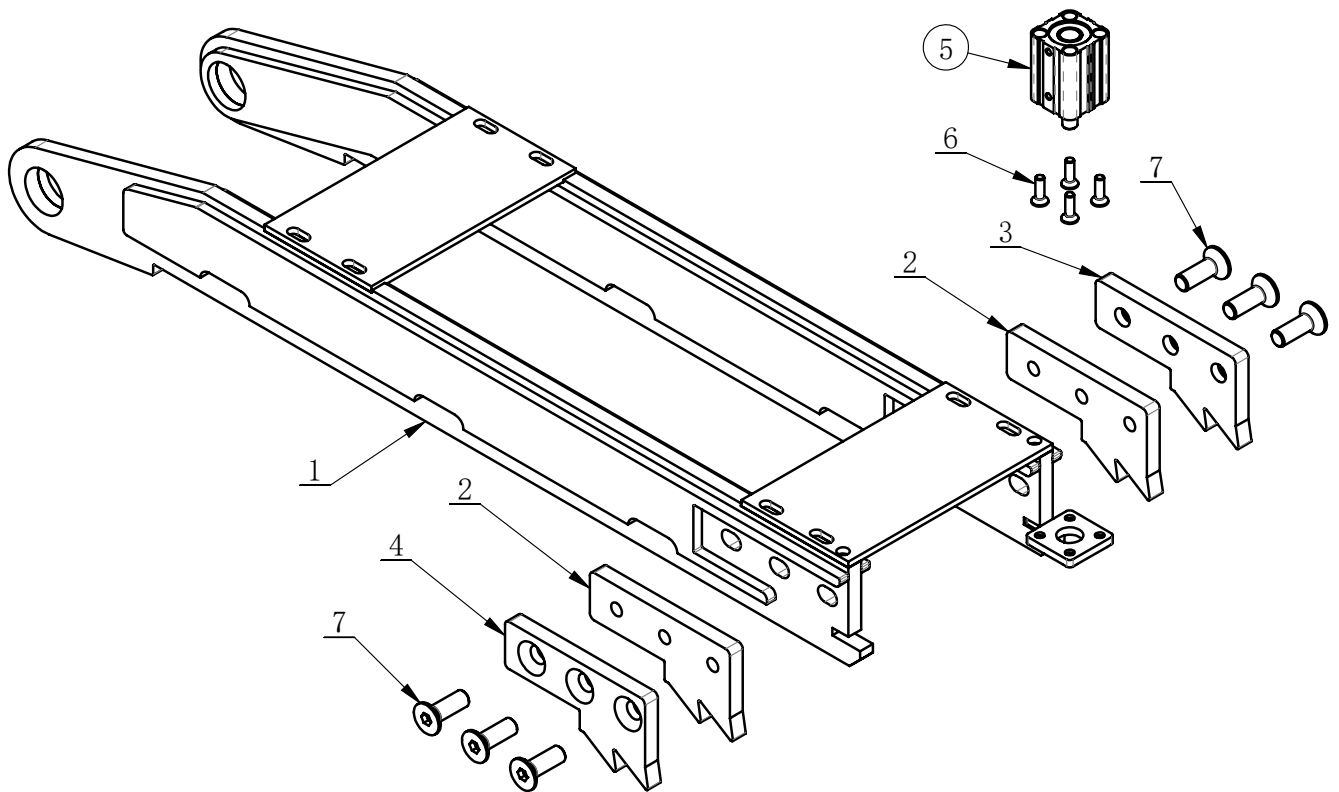
ITEM	PART. No	DESCRIPTION	QT. Y
1	J301-1110000	Rear Base	1
2	J301-1120000	Front Base	1
3	J301-1130000	Scisser Arms Internal	1
4	J301-1140000	Scisser Arms External	1
5	J301-1150000	Lever	2
6	J301-1160000	Safety Harpoon	1
7	J301-1171000	Master Cylinder	1
8	J301-1181000	Slave Cylinder	1
9	J301-1190000	Lever Pin	6
10	J301-11A0000	Safety Rack	2
11	J301-11B0000	Adjustment screw	8
12	J301-1100001	Sliding Pad	2
13	J301-1100002	Spacer	4
14	J301-1100003	Sliding Pin	2
15	J301-1100004	Cylinder Pin top	1
16	J301-1100005	Cylinder Pin Bottom	1
17	J301-1100006	Roller	2
18	J301-1100007	Platform Sliding Pad	2
19	J301-1100008	Connection Hoses Cover	1
20	J301-1100009	Top Arm Support	2
21	J301-1100010	Bottom Arm Support	2
22	J301-1000005	Hoses Holder	1
23	J301-1000004	Spiral Air Tubing	1
24	J301-1000023	Hoses Support	1
25	BPM6	Air connection	1
26	GB70. 1-M12×70	INNER HEXA CYLINDRICAL SCREW	2
27	GB70. 1-M12×55	INNER HEXA CYLINDRICAL SCREW	2
28	GB93-12	STANDARD SPRING WASHER	8
29	GB12613-40X44X30	Self-Lubricating Bushing	2
30	SF-1-30160	Self-Lubricating Bushing	4
31	SF-1-35160	Self-Lubricating Bushing	2
32	SF-1-40260	Self-Lubricating Bushing	2
33	SF-1-45260	Self-Lubricating Bushing	2
34	GB70. 2-M10×16	INNER HEXA CYLINDRICAL ROUND HEAD SCREW	12
35	GB96. 2-8	LARGE WASHER C GRADE	2
36	GB93-8	STANDARD SPRING WASHER	3
37	GB70. 1-M8×25	INNER HEXA CYLINDRICAL SCREW	2
38	GB70. 1-M12×25	INNER HEXA CYLINDRICAL SCREW	4
39	GB894. 2-30	SHAFT ELATIC RETAINING RING B-TYPE	6
40	GB41-M16	HEXANGULAR NUT	4
41	GB5783-M16×80	HEXANGULAR BOLT	4
42	GB95-6	FLAT WASHER	3
43	GB93-6	STANDARD SPRING WASHER	3
44	GB70. 1-M6×30	INNER HEXA CYLINDRICAL SCREW	3
45	GB95-8	FLAT WASHER	1
46	GB5783-M8×16	HEXANGULAR BOLT	1



ITEM	PART. No	DESCRIPTION	QT. Y
1	J301-1151000	Lever	1
2	J301-1150001	Roller	2
3	J301-1150002	Roller Pin	1
4	J301-1150003	Cylinder Pin Top	1
5	J301-1150004	Pin Holder	1
6	SF-1-30160	Self-Lubricating Bushing	4
7	SF-1-40260	Self-Lubricating Bushing	2
8	GB12613-40X44X30	Self-Lubricating Bushing	2
9	GB70. 1-M6×12	INNER HEXA CYLINDRICAL SCREW	1
10	J301-1150005	Pin Holder	2
11	GB70. 3-M8×16	INNER COUNTERSUNK SCREW	4

J301-1160000.

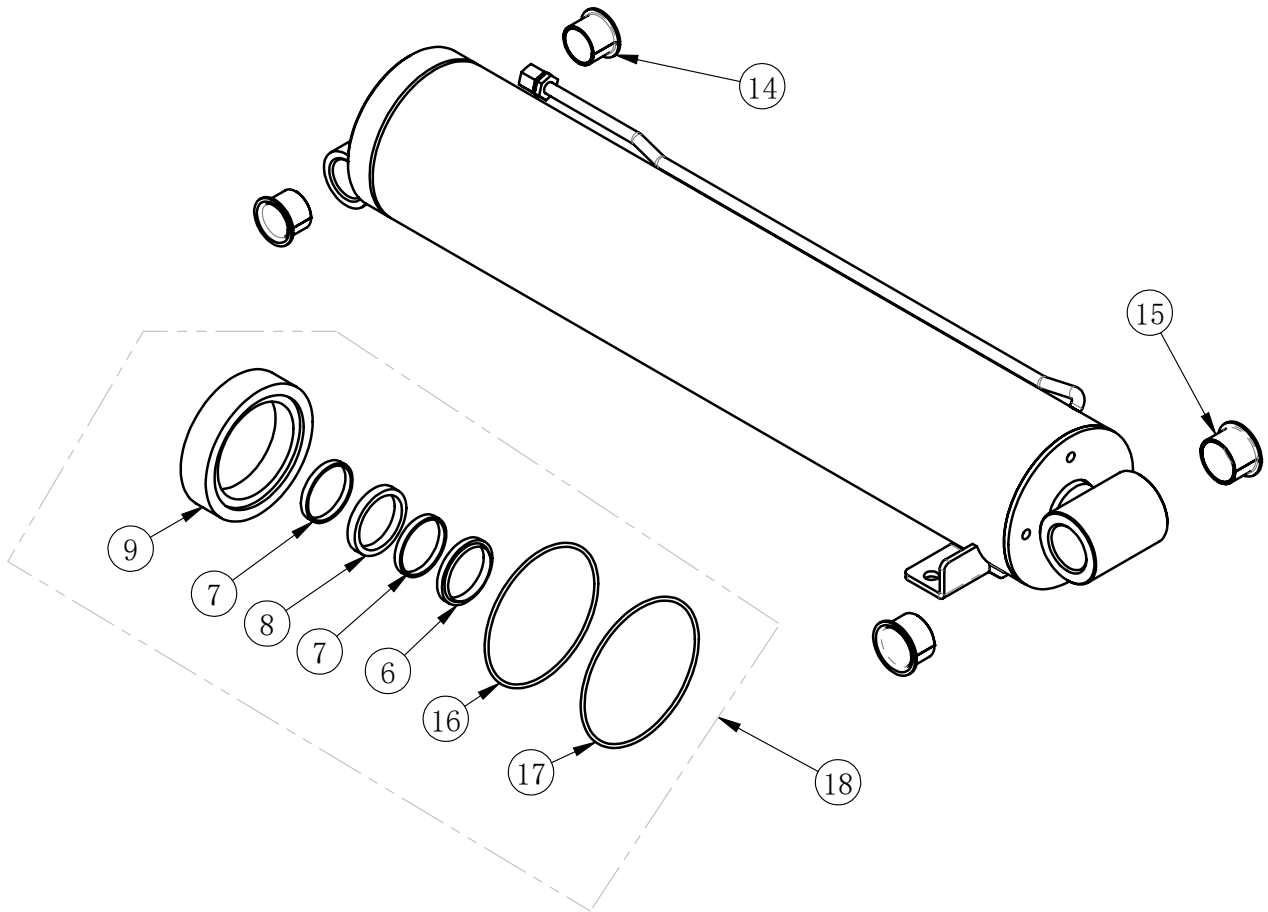
Revision A-04



ITEM	PART. No	DESCRIPTION	QT. Y
1	J301-1161000	Safety Harpoon	1
2	J301-1160001	Rack	2
3	J301-1160002	Rack	1
4	J301-1160003	Rack	1
5	J301-1163000	Compact Cylinder	1
6	GB70. 3-M6×20	INNER COUNTERSUNK SCREW	4
7	GB70. 3-M12×35	INNER COUNTERSUNK SCREW	6

J301-1171000.

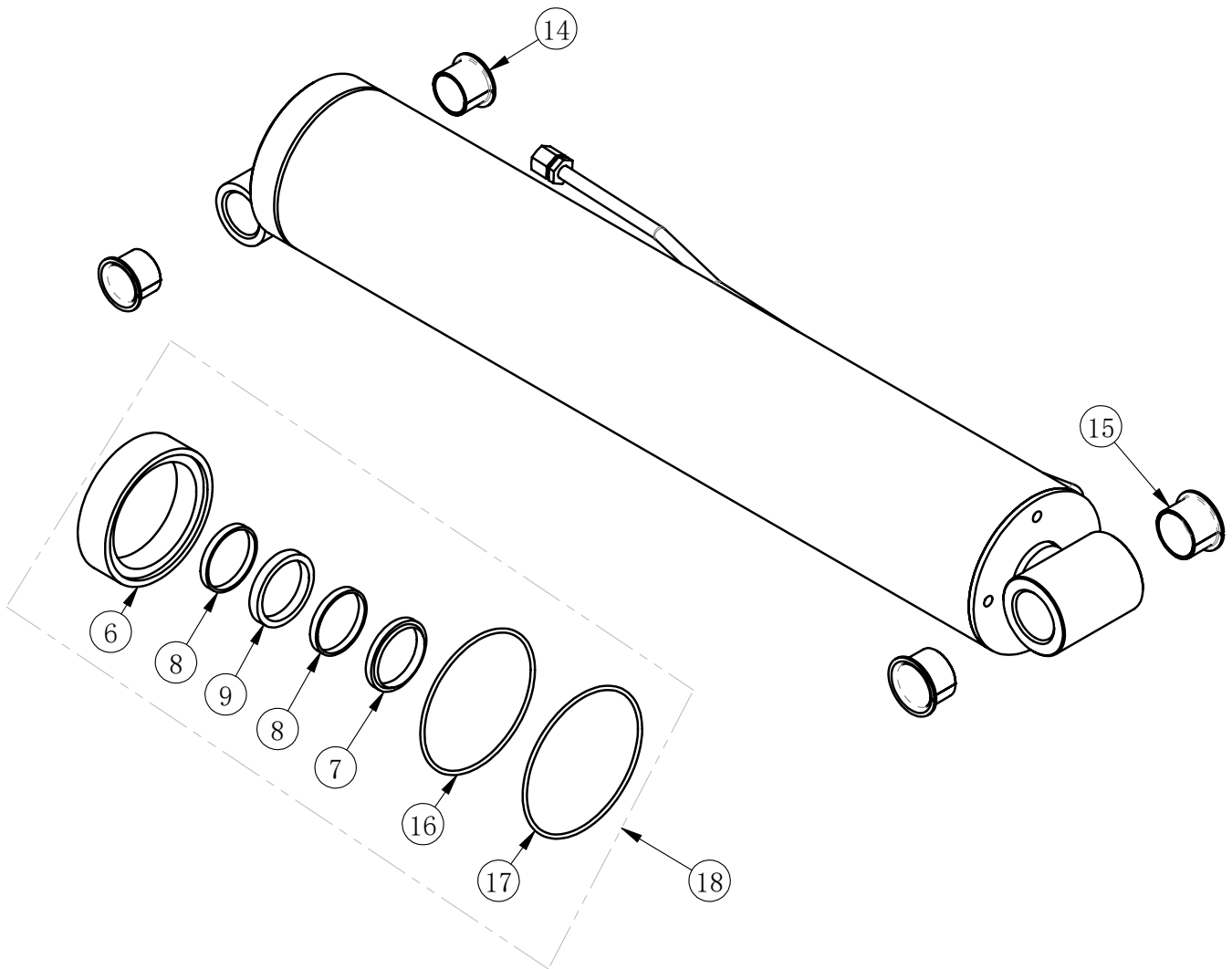
Revision A-04



ITEM	PART. No	DESCRIPTION	QT. Y
6	J301-1171003	SHAFT SEAL RING	1
7	J301-1171004	SHAFT SEAL RING	2
8	J301-1171005	SHAFT SEAL RING	1
14	SF-1-30260	SUPPERSSSED SHAFT SLEEVE	2
15	SF-1-35260	SUPPERSSSED SHAFT SLEEVE	2
16	GB3452. 1-120x3. 1	O-RING	1
17	GB3452. 1-125x3. 1	O-RING	1
18	J301-1171100	SEAL RING SET	

J301-1181000.

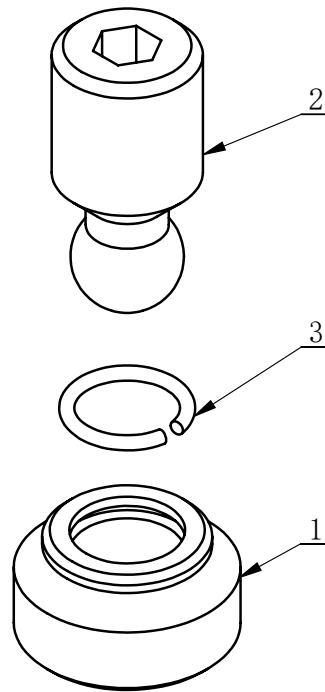
Revision A-04



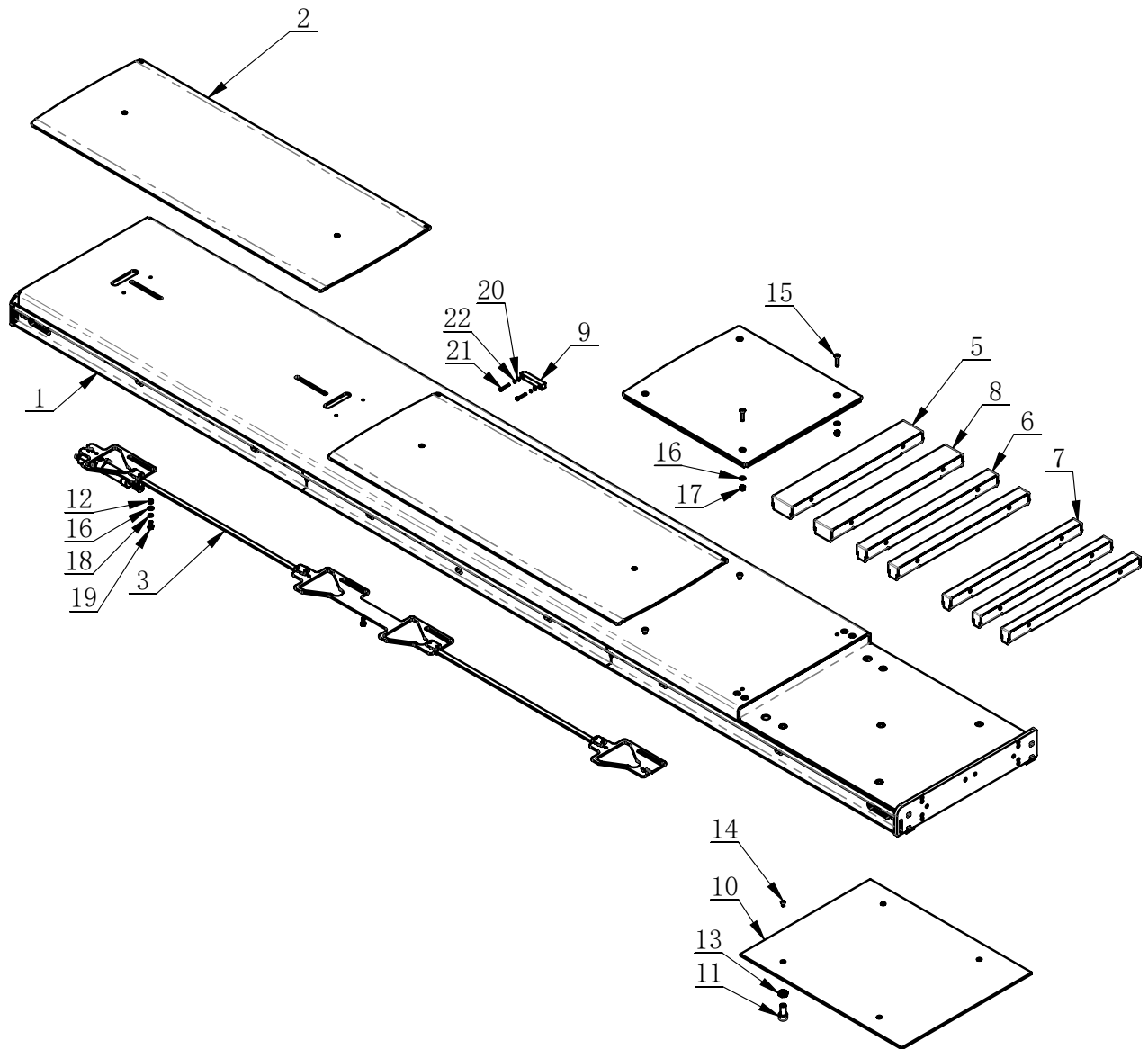
ITEM	PART. No	DESCRIPTION	QT. Y
6	J301-1181003	SHAFT SEAL RING	1
7	J301-1171003	SHAFT SEAL RING	1
8	J301-1171004	SHAFT SEAL RING	2
9	J301-1171005	SHAFT SEAL RING	1
14	SF-1-30260	SUPPERSED SHAFT SLEEVE	2
15	SF-1-35260	SUPPERSED SHAFT SLEEVE	2
16	GB3452. 1-110x3. 1	O-RING	1
17	GB3452. 1-115x3. 1	O-RING	1
18	J301-1189000	SEAL RING SET	

J301-11B0000.

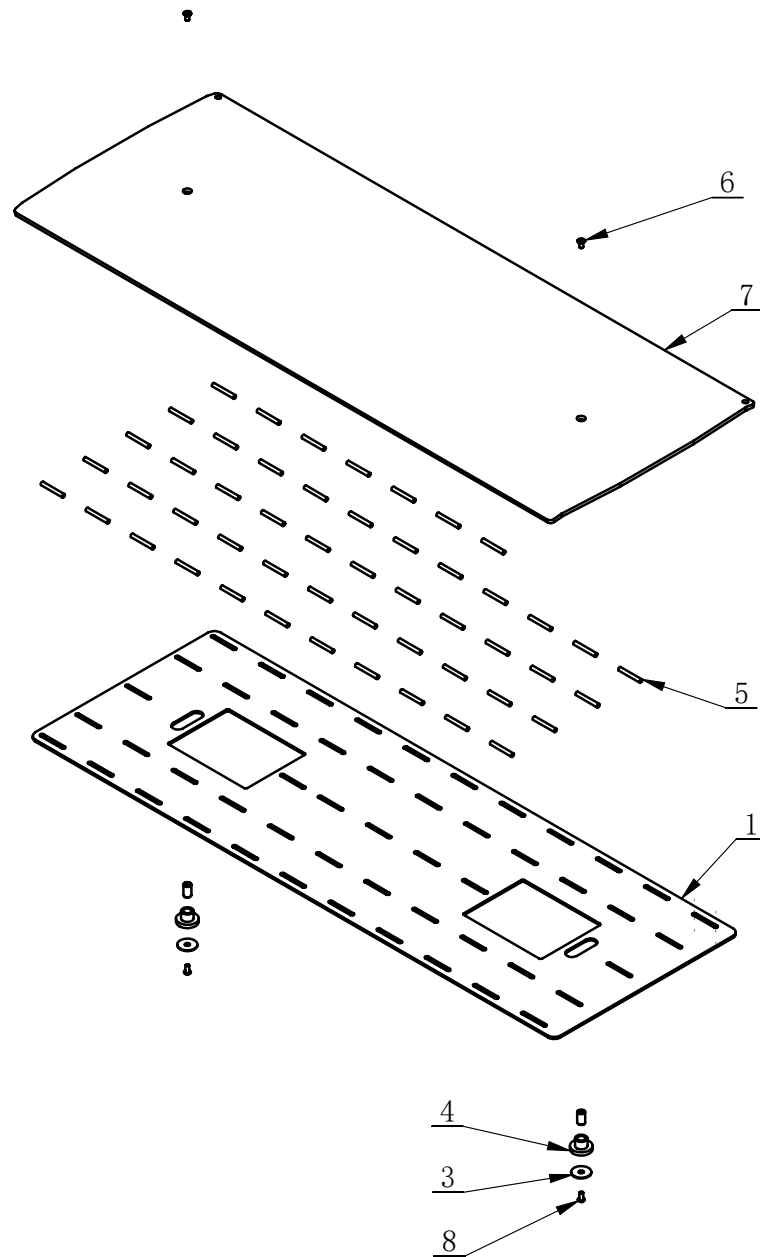
Revision A-04



ITEM	PART. No	DESCRIPTION	QT. Y
1	J301-11B0001	Plate	1
2	J301-11B0002	Spring Ring	1
3	J301-11B0003	Screw M18	1



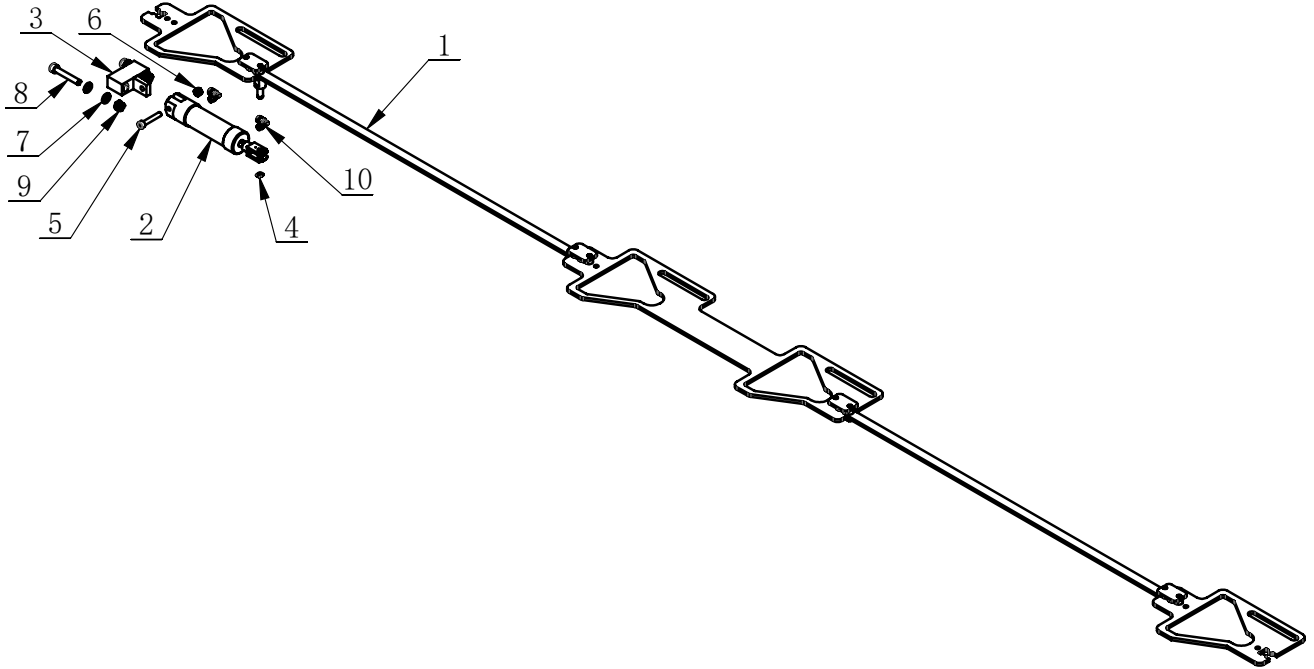
ITEM	PART. No	DESCRIPTION	QT. Y
1	J302-1210000	Platfom Right	1
2	J302-1220000	Lift Table	2
3	J302-1230000	Sliding Plate	1
4	J302-1240000	Sliding Block	1
5	J301-1260000	Spacer 100	1
6	J301-1270000	Spacer 50	2
7	J301-1280000	Spacer 40	3
8	J301-1290000	Spacer 90	1
9	J301-1200001	Slider	2
10	J301-1200003	Turn Table Plate	1
11	J301-1200004	Adjustment bolt	5
12	J301-1200006	Nut	4
13	GB6172. 1-M20	HEXANGULAR THIN NUT	5
14	GB70. 3-M8×16	INNER COUNTERSUNK SCREW	4
15	GB70. 3-M10×45	INNER COUNTERSUNK SCREW	4
16	GB95-10	FLAT WASHER	8
17	GB889. 1-M10	1-TYPE PREVAILING TORQUE TYPE HEXAGON LOCK NUT	4
18	GB93-10	STANDARD SPRING WASHER	4
19	GB5783-M10×20	HEXANGULAR BOLT	4
20	GB95-6	FLAT WASHER	4
21	GB5783-M6×40	HEXANGULAR BOLT	4
22	GB93-6	STANDARD SPRING WASHER	4



ITEM	PART. No	DESCRIPTION	QT. Y
1	J302-1220001	Roller Cage	1
2	J302-1220002	Pin	1
3	J301-1230002	Pin	2
4	J301-1230003	Washer	2
5	J301-1230004	Guide	2
6	J301-1230005	Sliding Roller	51
7	GB70. 3-M8×16	INNER COUNTERSUNK SCREW	2
8	GB70. 2-M8×16	INNER HEXA CYLINDRICAL ROUND HEAD SCREW	2

J302-1230000

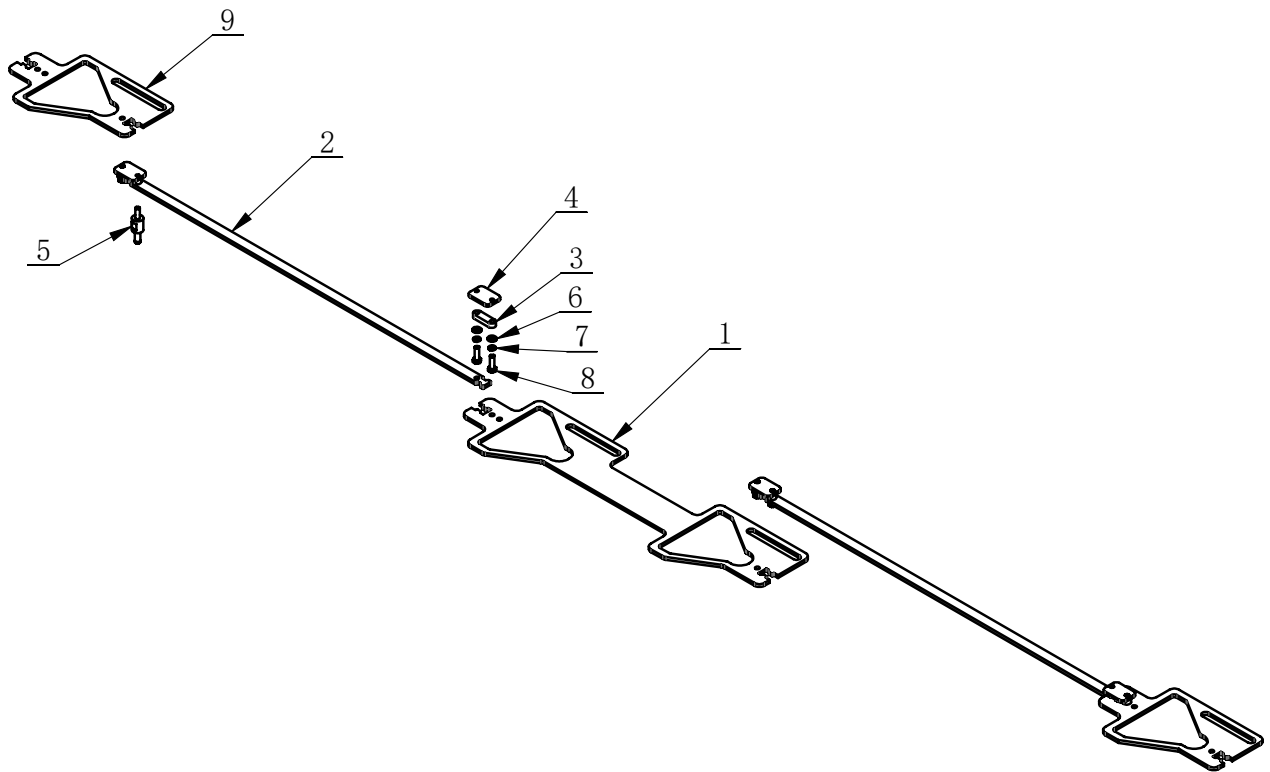
Revision A-04



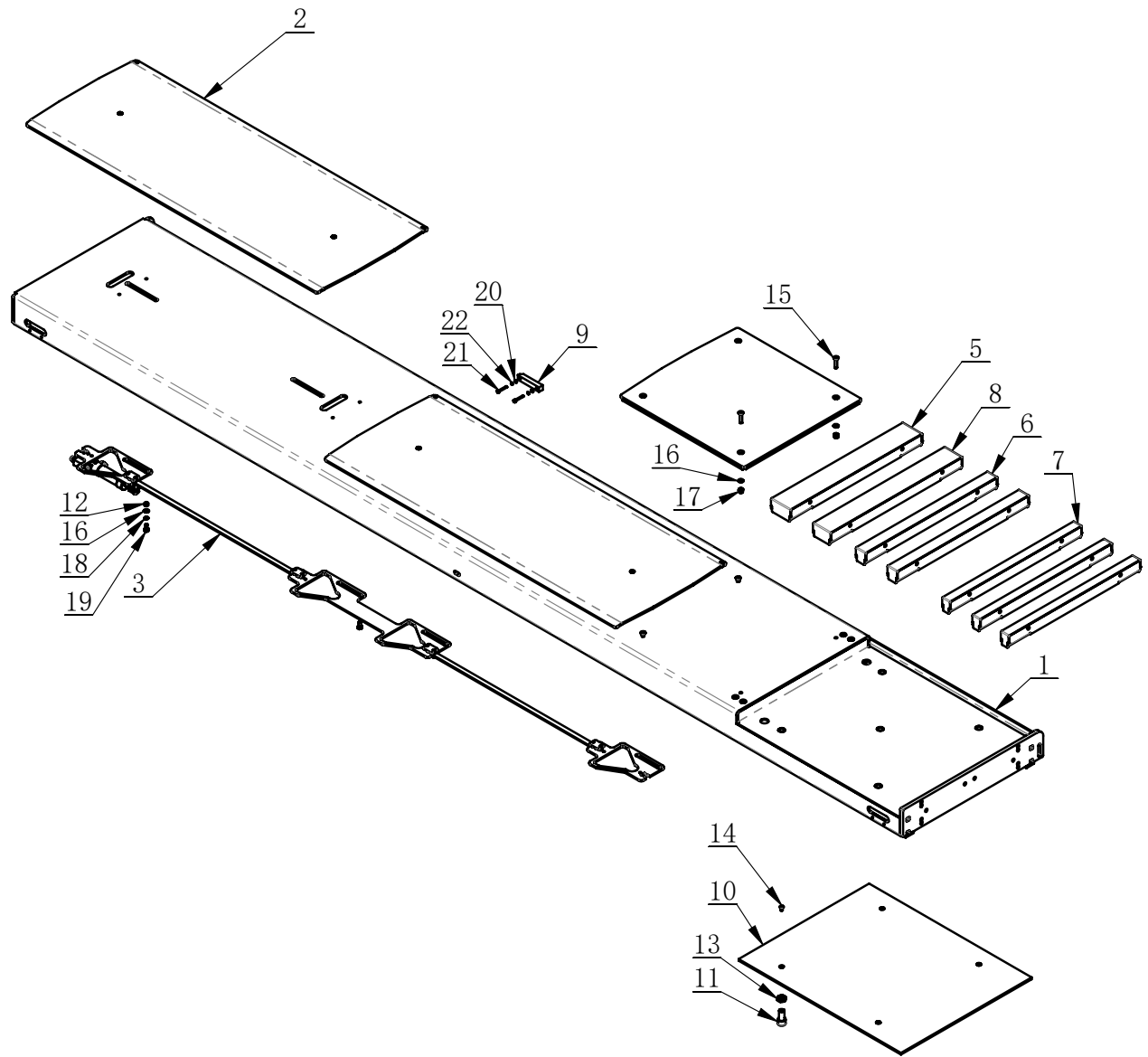
ITEM	PART. No	DESCRIPTION	QT. Y
1	J302-1231000	Connection plate	1
2	J301-1242000	Air Cylinder	1
3	J301-1243000	Cylinder Support	1
4	GB894. 1-10	SHAFT ELATIC BIG RETAINING RING A-TYPE	1
5	GB70. 1-M8×45	INNER HEXA CYLINDRICAL SCREW	1
6	GB889. 1-M8	1-TYPE PREVAILING TORQUE TYPE HEXAGON LOCK NUT	1
7	GB95-10	FLAT WASHER	4
8	GB70. 1-M10×60	INNER HEXA CYLINDRICAL SCREW	2
9	GB889. 1-M10	1-TYPE PREVAILING TORQUE TYPE HEXAGON LOCK NUT	2
10	PL601	Air Connection	2

J302-1231000

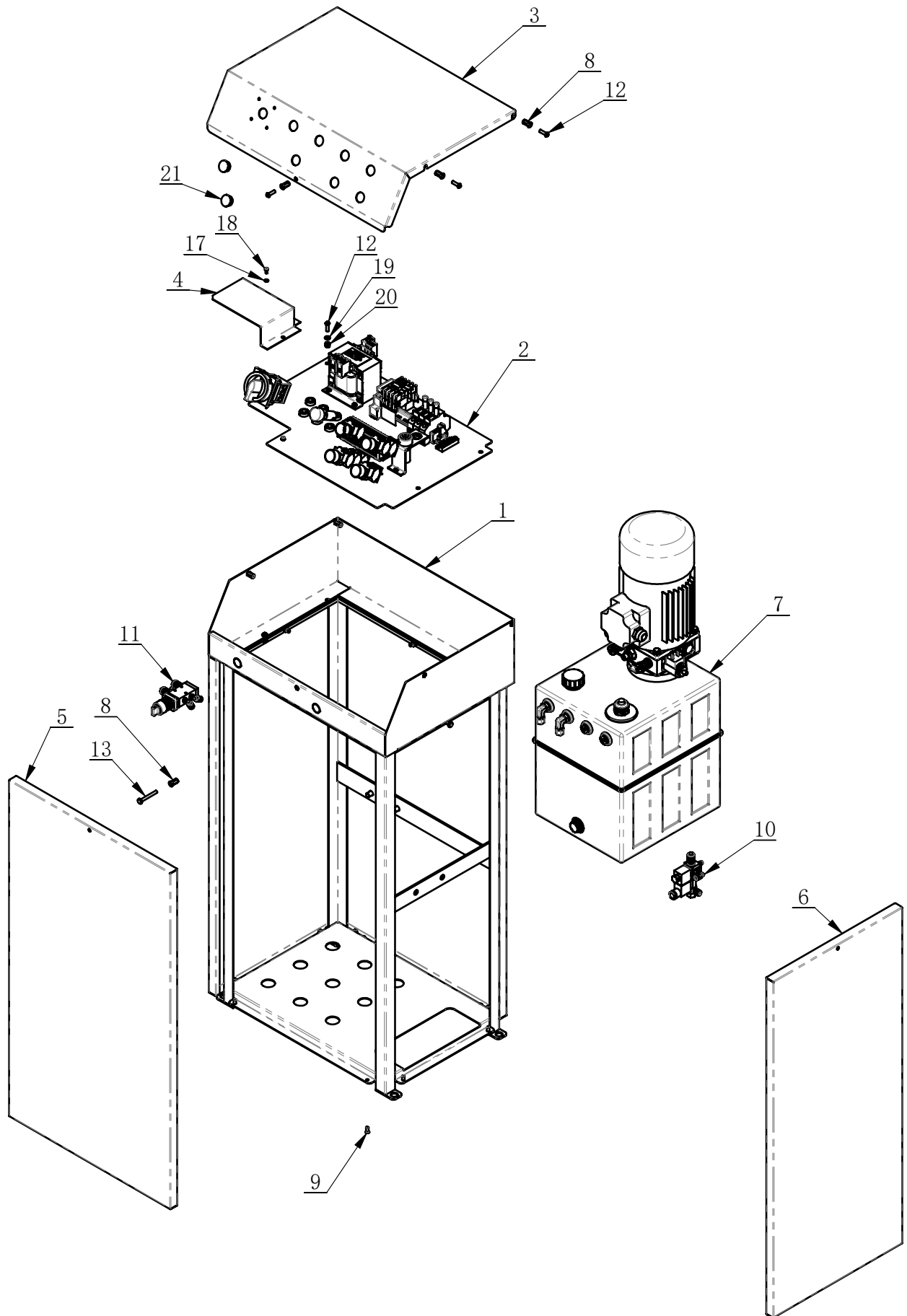
Revision A-04



ITEM	PART. No	DESCRIPTION	QT. Y
1	J302-1231001	Arrow Plate	1
2	J302-1231002	Connection plate	2
3	J301-1241003	Sliding steel	4
4	J301-1241004	Fixing Plate	4
5	J301-1241005	Cylinder pin	1
6	GB95-8	FLAT WASHER	7
7	GB93-8	STANDARD SPRING WASHER	7
8	GB5783-M8×25	HEXANGULAR BOLT	7
9	J301-1241001	Arrow Plate	2



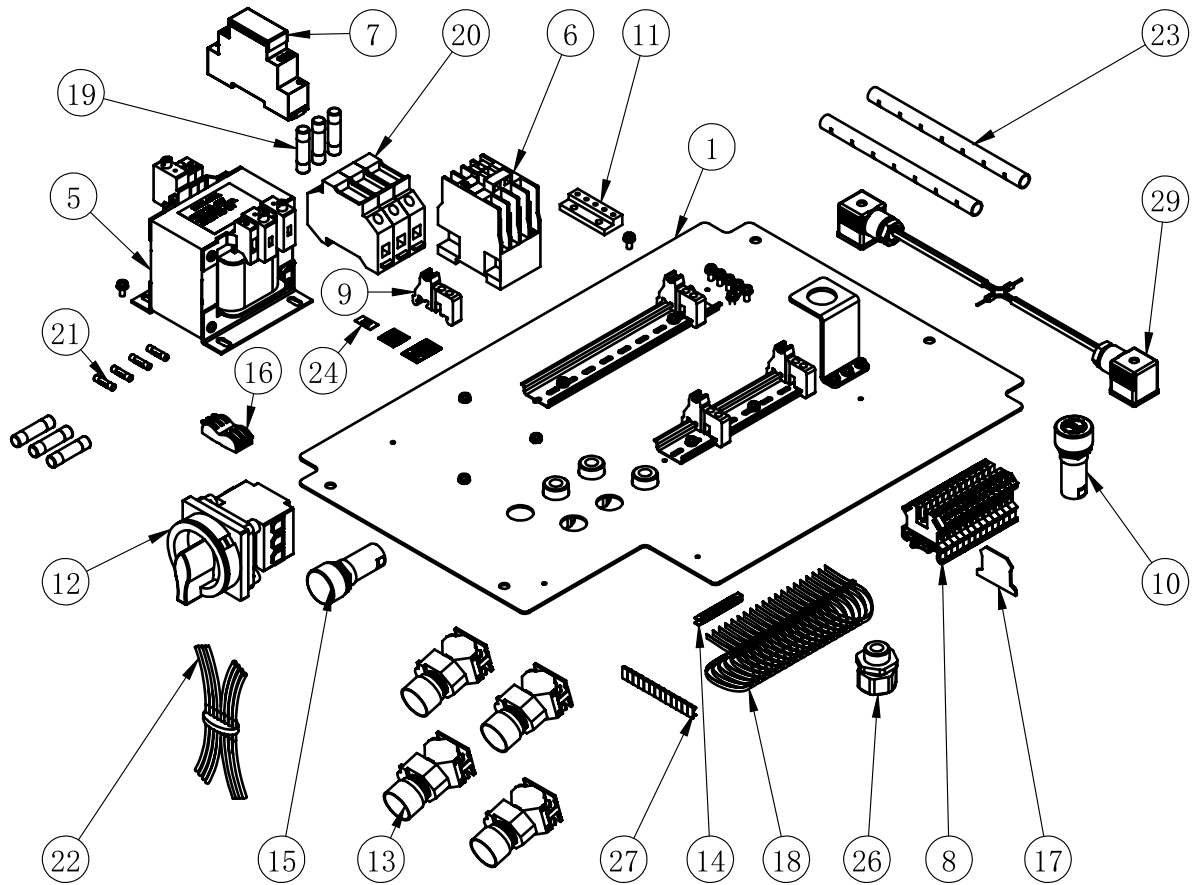
ITEM	PART. No	DESCRIPTION	QT. Y
1	J302-1310000	Platform left	1
2	J302-1220000	Lift Table	2
3	J302-1230000	Sliding Plate	1
4	J302-1240000	Sliding Block	1
5	J301-1260000	Spacer 100	1
6	J301-1270000	Spacer 50	2
7	J301-1280000	Spacer 40	3
8	J301-1290000	Spacer 90	1
9	J301-1200001	Slider	2
10	J301-1200003	Turn Table Plate	1
11	J301-1200004	Adjustment bolt	5
12	J301-1200006	Nut	4
13	GB6172. 1-M20	HEXANGULAR THIN NUT	5
14	GB70. 3-M8×16	INNER COUNTERSUNK SCREW	4
15	GB70. 3-M10×45	INNER COUNTERSUNK SCREW	4
16	GB95-10	FLAT WASHER	8
17	GB889. 1-M10	1-TYPE PREVAILING TORQUE TYPE HEXAGON LOCK NUT	4
18	GB93-10	STANDARD SPRING WASHER	4
19	GB5783-M10×20	HEXANGULAR BOLT	4
20	GB95-6	FLAT WASHER	4
21	GB5783-M6×40	HEXANGULAR BOLT	4
22	GB93-6	STANDARD SPRING WASHER	4



ITEM	PART. No	DESCRIPTION	QT. Y
1	J301-1610000	Control-Box Frame	1
2	J302-16200000	Electro plate	1
3	J301-1600021	Head Cover	1
4	J301-1600022	Support	1
5	J301-1600024	Pannel	2
6	J301-1600023	Pannel	2
7	J301-1660000-550	Pump Unit	1
8	GB17880. 5-M6×18	FLAT HEXA RIVETTED NUT	9
9	GB17880. 1-M4×12	FLAT RIVETTED NUT	8
10	J301-1630000	Air Electro Magnet Ventil	1
11	J301-1640000	Air Ventil	1
12	GB70. 2-M6×20	INNER HEXA CYLINDRICAL ROUND HEAD SCREW	9
13	GB818-M6×50-H	CROSS PANHEAD SCREW	4
14	GB95-10	FLAT WASHER	2
15	GB93-10	STANDARD SPRING WASHER	2
16	GB70. 1-M10×20	INNER HEXA CYLINDRICAL SCREW	2
17	GB95-4	FLAT WASHER	2
18	GB70. 1-M4×8	INNER HEXA CYLINDRICAL SCREW	2
19	GB95-6	FLAT WASHER	4
20	GB889. 1-M6	1-TYPE PREVAILING TORQUE TYPE HEXAGON LOCK NUT	4
21	J302-1600001	SKT - 22 plastic wall	2

J302-1620000

版本 A-04



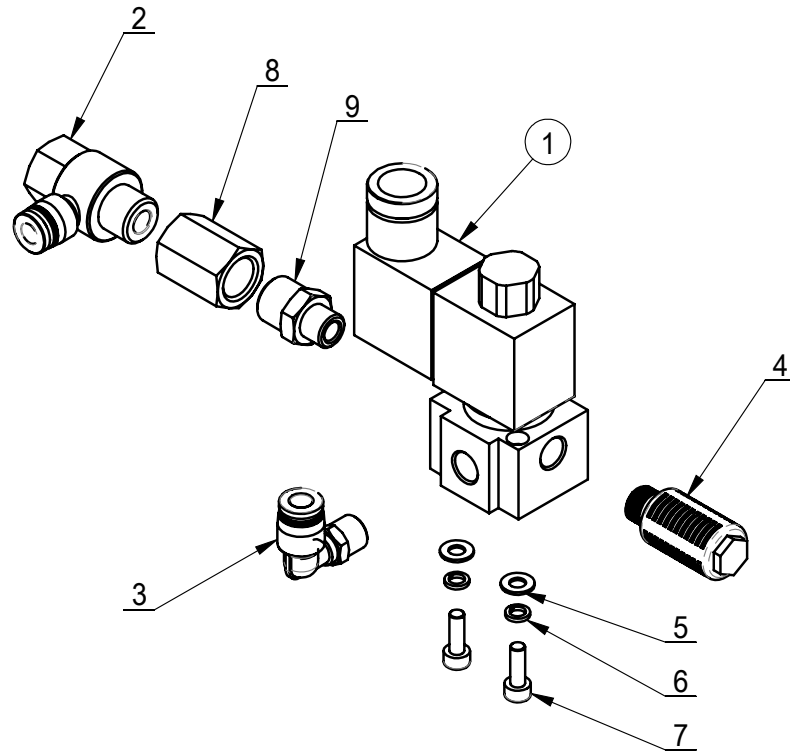
J302-1620000(400V/3P)

ITEM	PART. No	DESCRIPTION	QT. Y
1	J301-1620021	Electro plate	1
5	TC-E-3940232	Transformator	1
6	TC-E-4280124	Contactur	1
7	TC-E-4324124	Fuse Holder	1
8	TC-E-5110025	Connection	13
9	TC-E-5130000	Connection	4
10	TC-E-7202408	Signal	1
11	TC-E-7400001	Earth Connection	1
12	J101-1512500	Main	1
13	TC-E-27A0200	Push button	4
14	J101-1121002	Nut	10
15	TC-E-7202409	Light	1
16	TC-E-5SPL003	Connector	1
17	J401-1322004	Nut	1
18	B-53-1000019	Clamp	20
19	TC-E-7101512	Fuse	3
20	TC-E-7128323	Fuse Holder	3
21	J302-1621200	Fuse	1
22	J302-1623000	The wiring harness assembly	1
23	J401-1322008	Cabel Holder	2
24	J302-1621003	Clamp	20
26	TC-E-7700020	Cabel Clamp M20x1, 5	4
27	J401-1322003	Clamp	13
29	J301-1628000	Line assembly of main shear valve	1

J302-1620000(230V/1P)

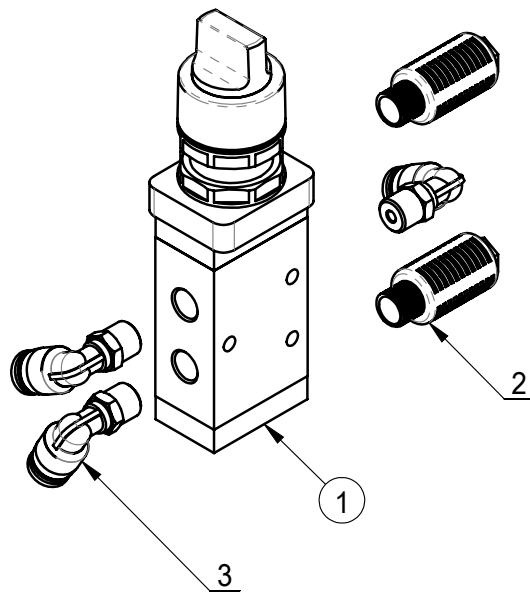
5	TC-E-4220124	Transformator	1
19	MF-01-8120003	Fuse	3
20	TC-E-7128323	Fuse Holder	3

All circled position numbers are recommended spare parts



ITEM	PART.No	DESCRIPTION.	QT.Y
1	3V20-6NCE	Air Magnet Ventil	1
2	PHF602	Air Connector	1
3	PL601	Air Connection	1
4	FSK 01	Filter	1
5	GB95-4	FLAT WASHER	2
6	GB93-4	STANDARD SPRING WASHER	2
7	GB70.1-M4×12	INNER HEXA CYLINDRICAL SCREW	2
8	PUMR1-4 1-4	Joint	1
9	PUF1-8 1-4	Joint	1

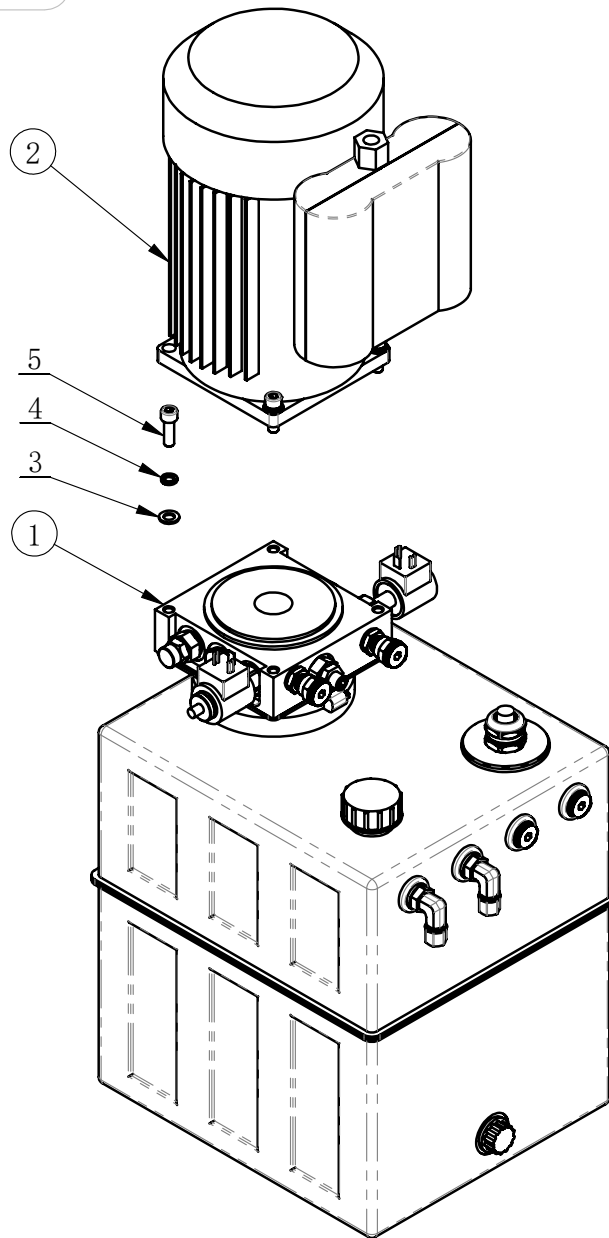
All circled position numbers are recommended spare parts



ITEM	PART.No	DESCRIPTION.	QT.Y
1	M5HS21006B	AIR Ventil	1
2	FSK 01	Filter	2
3	PL601	Air Connection	3

J301-1660000-550

Revision A-04



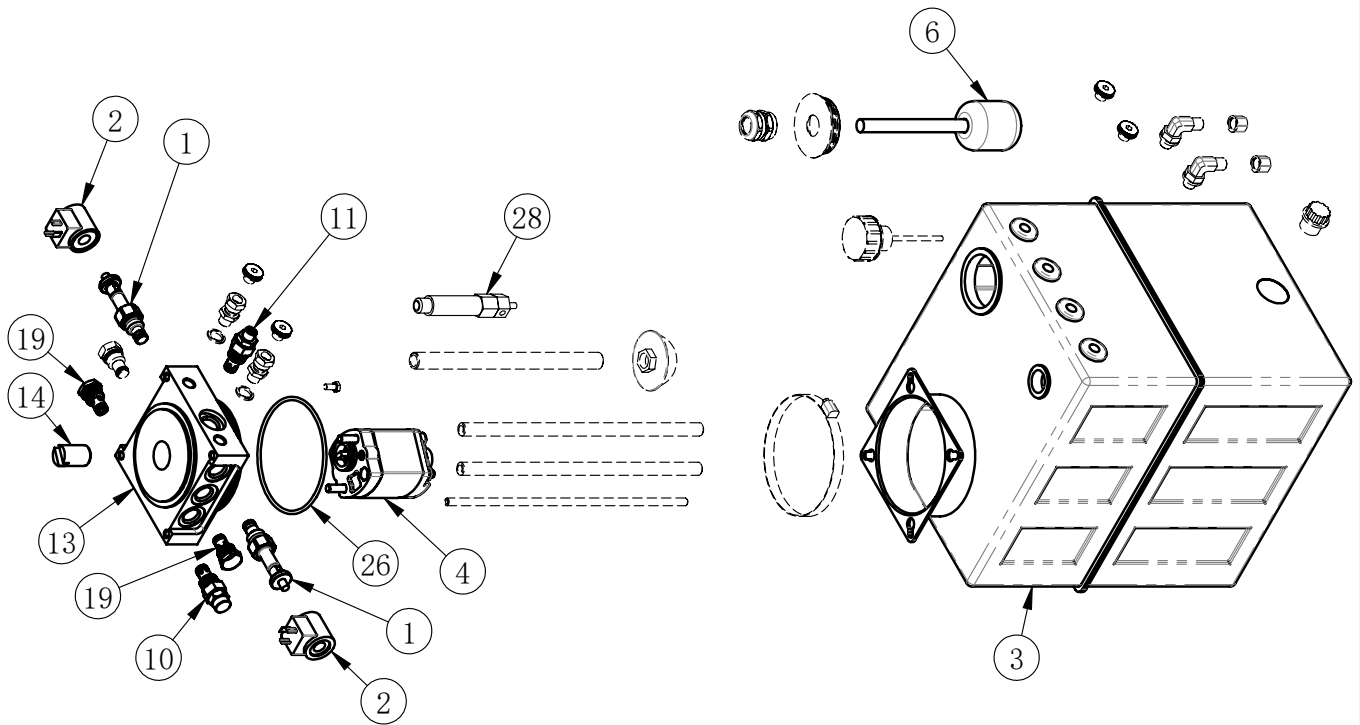
J301-1661000-550 (400V/3P)			
ITEM	PART. No	DESCRIPTION	QT. Y
1	J301-1661000	Pump Unit	1
2	J101-1501001	Electro Motor	1
3	GB95-8	FLAT WASHER	4
4	GB93-8	STANDARD SPRING WASHER	4
5	GB70. 1-M8×25	INNER HEXA CYLINDRICAL SCREW	4

J301-1660000-220V50-550 (230V/50Hz/1P)			
1	J101-1501001	Pump Unit	1
2	J301-1661000-220V50	Electro Motor	1

J301-1660000-220V60-550 (230V/60Hz/1P)			
1	J101-1501002	Pump Unit	1
2	J301-1661000-220V60	Electro Motor	1

J301-1661000

Revision A-04



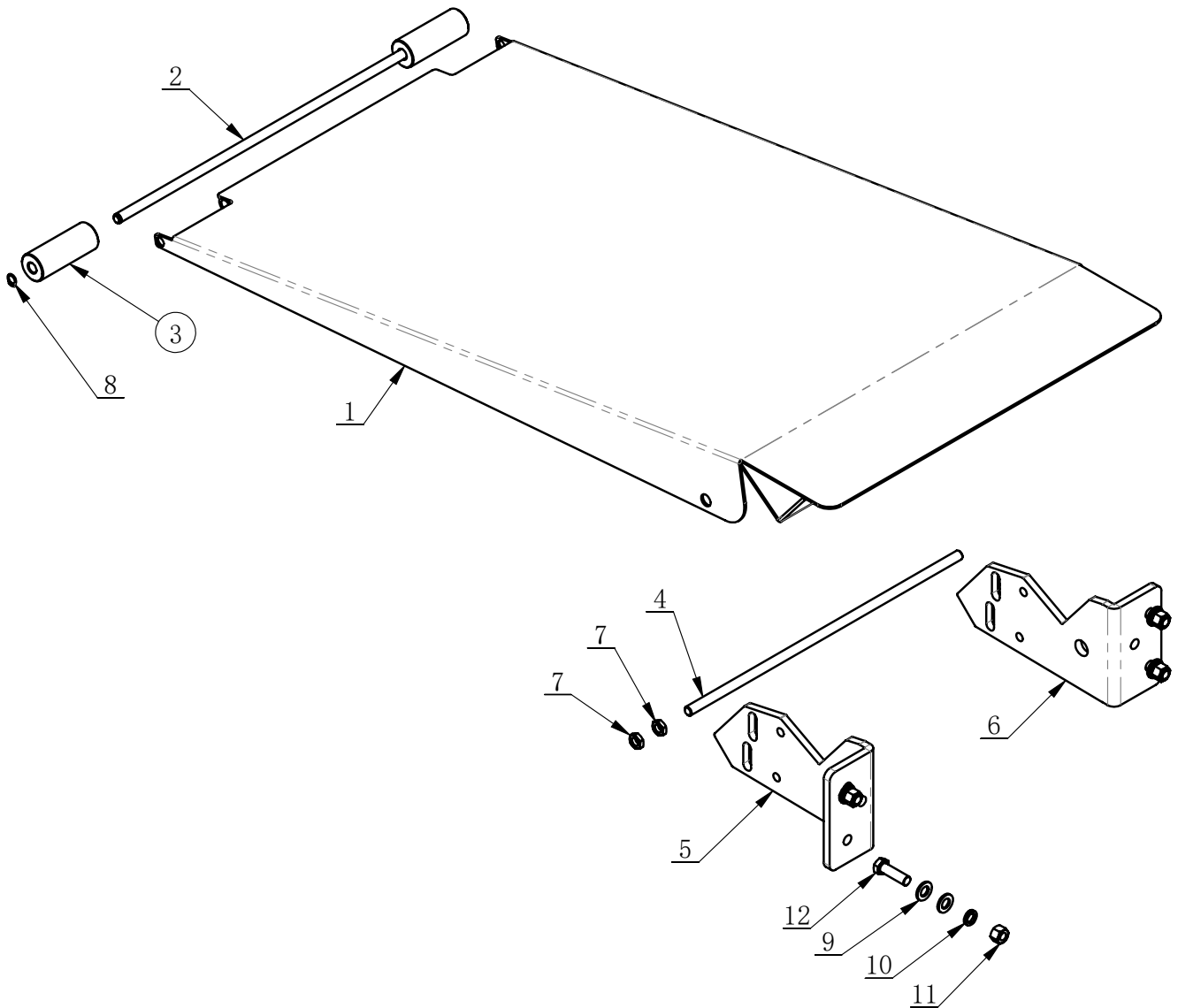
J301-1661000 (400V/3P)			
ITEM	PART. No	DESCRIPTION	QT. Y
1	J401-1331002	Solenoid 2/2 way valve 3/4-16 UNF	2
2	J401-1331003	Coil	2
3	J301-1661004	Plastic square tank white colour	1
4	J301-1661001-220V50	Gear pump	1
6	J401-1331009	Float level	1
10	J401-1331015	Relief valve	1
11	J401-1331016	Adjustable flow valve	1
13	J401-1331100	Central manifold type one	1
14	J101-1130101	Relief valve dumpener	1
19	TC-20-1031206	check valve ball type	2
26	UF2057	O Seal ring $\phi 117*3.55$	1

J301-1661000-220V50 (230V/50Hz/1P)			
4	J401-1331007-220	Gear pump	1
28	J401-1331018	Starting valve Lengthen	1

J301-1661000-220V60 (230V/60Hz/1P)			
4	J101-1132A02-1P	Gear pump	1
28	J401-1331018	Starting valve Lengthen	1

J301-1400000.

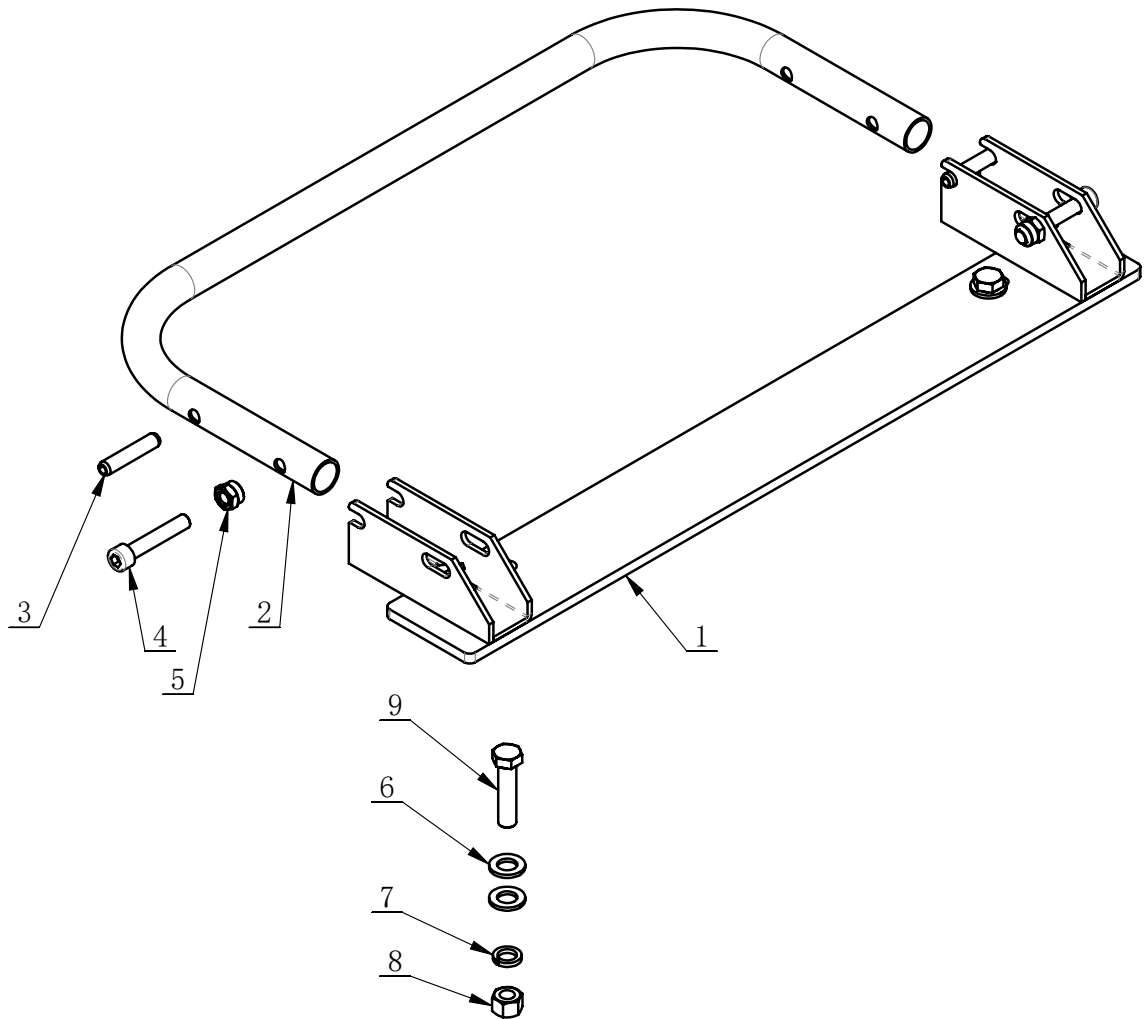
Revision A-04



ITEM	PART. No	DESCRIPTION	QT. Y
1	J301-1420000	Ramp	1
2	J301-1400001	Roller Pin	1
3	J301-1400002	Wheel	2
4	J301-1400003	Support Pin	1
5	J301-1400004	Support Right	1
6	J301-1400005	Support Left	1
7	GB6172. 1-M12	HEXANGULAR THIN NUT	4
8	GB894. 1-12	SHAFT ELATIC BIG RETAINING RING A-TYPE	2
9	GB95-12	FLAT WASHER	8
10	GB93-12	STANDARD SPRING WASHER	4
11	GB41-M12	HEXANGULAR NUT	4
12	GB5783-M12×40	HEXANGULAR BOLT	4

J301-1500000.

Revision A-04



ITEM	PART. No	DESCRIPTION	QT. Y
1	J301-1510000	Support	1
2	J301-1520002	Stopper	1
3	GB879. 1-10×50	ELASTIC CYLINDRICAL PIN, HEAVY	2
4	GB70. 1-M10×55	INNER HEXA CYLINDRICAL SCREW	2
5	GB889. 1-M10	1-TYPE PREVAILING TORQUE TYPE HEXAGON LOCK NUT	2
6	GB95-12	FLAT WASHER	4
7	GB93-12	STANDARD SPRING WASHER	2
8	GB41-M12	HEXANGULAR NUT	2
9	GB5783-M12×50	HEXANGULAR BOLT	2

Main lift hydraulic connection diagram

ITEM	PART. No
A	J301-1711000
B1	J301-1721000
B2	J301-1722000
F	J301-1761000
D	J301-1741000
E1	J301-1752000
E2	J301-1751000
C	J301-1732000

