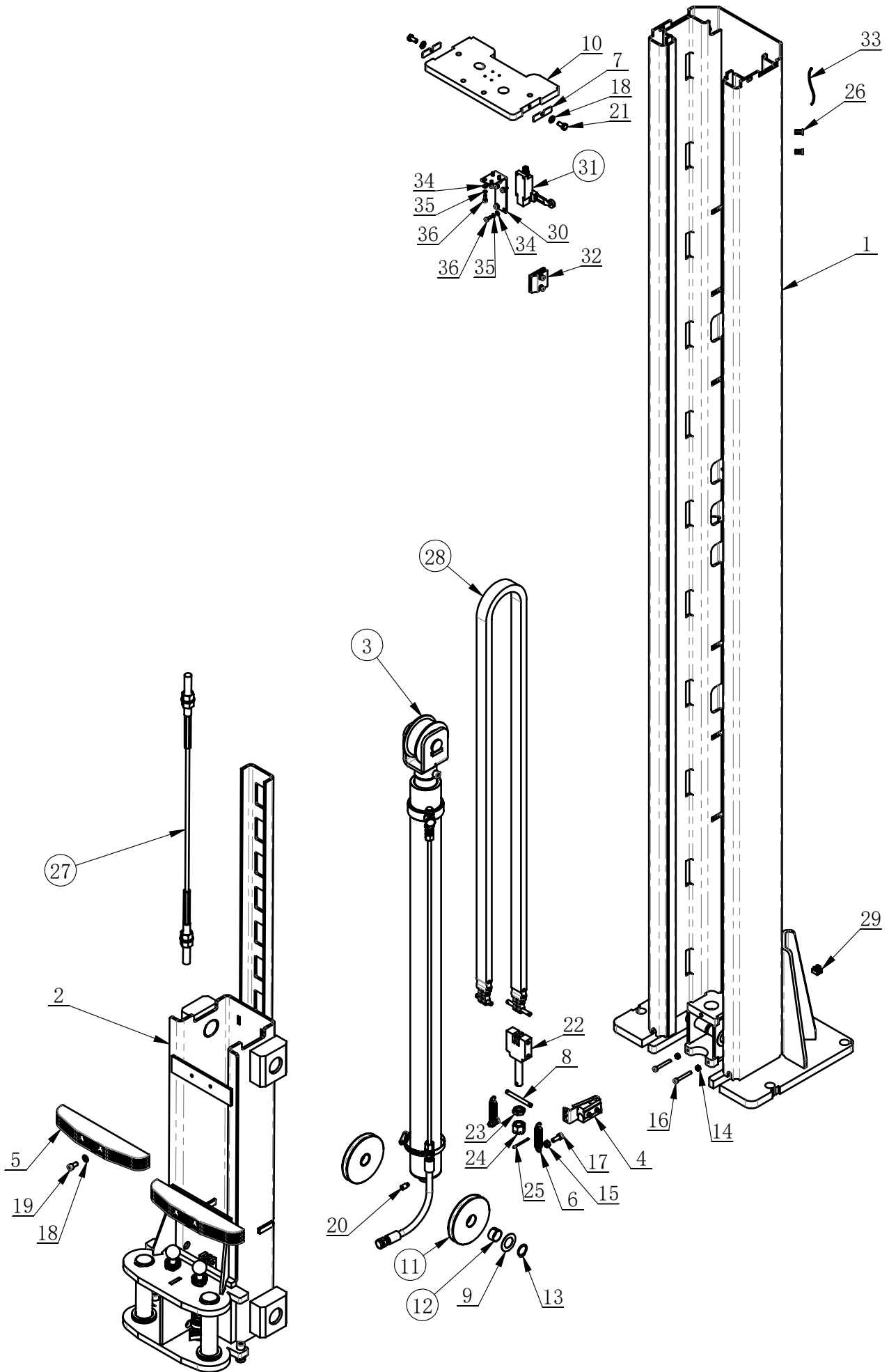


ITEM	PART. No	DESCRIPTION	数量
1	J103UP-1100000	PART ASSEMBLY OF MAIN POST	1
2	J103-1200000	ACCESSARY LIFTING FITTING	1
3	J103B-1050000	ARM COMPONENTS ONE	2
4	J103B-1060000	ARM COMPONENTS TWO	2
5	J101-1080000	SYNCHRONOUS PULLEY ASSEMBLY	2
6	J101-1100000	CURTAIN ASSEMBLY	2
7	J103G-1340000	LIFTING PADS ASSEMBLY	4
8	J101-1000018	LONG RAIL	2
9	J101-1000019	SHORT RAIL	2
10	J101-1000010	ELECTROMAGENT COVER	2
11	J101-1223000	WIRE ASSEMBLY	1
12	J113-1060000A	SAFETY LOCK ASSEMBLY	2
13	J101-1140100	OIL HOSE COMPONENTS 1	1
14	J101-1140300	OIL HOSE COMPONENTS 3	1
15	J101-1141000	SUPPRESSED RUBBER HOSE	1
16	J101-1000008	HPU SUPPORT	1
17	J105-1000006	SHOCK PAD	4
18	GB95-10	FLAT WASHER	2
19	GB93-10	STANDARD SPRING WASHER	2
20	GB70. 1-M10×20	INNER HEXA CYLINDRICAL SCREW	2
21	J103G-1120000	CONTROL BOX	1
22	J101-1190000	HPU	1
23	J101-1000025	R-SHAPE PIN	8
24	GB95-6	FLAT WASHER	12
25	GB93-6	STANDARD SPRING WASHER	4
26	GB70. 1-M6×20	INNER HEXA CYLINDRICAL SCREW	4
27	GB70. 1-M6×25	INNER HEXA CYLINDRICAL SCREW	12
28	J101-1140005	BRITISH HINGE BOLTS	1
29	JB982-13	COMBINATION PAD	2
30	J101-1121R00	HPU SOLENOID VALVE CONNECTION WIRE	1
31	J103G-8000000	Strengthen the base	1

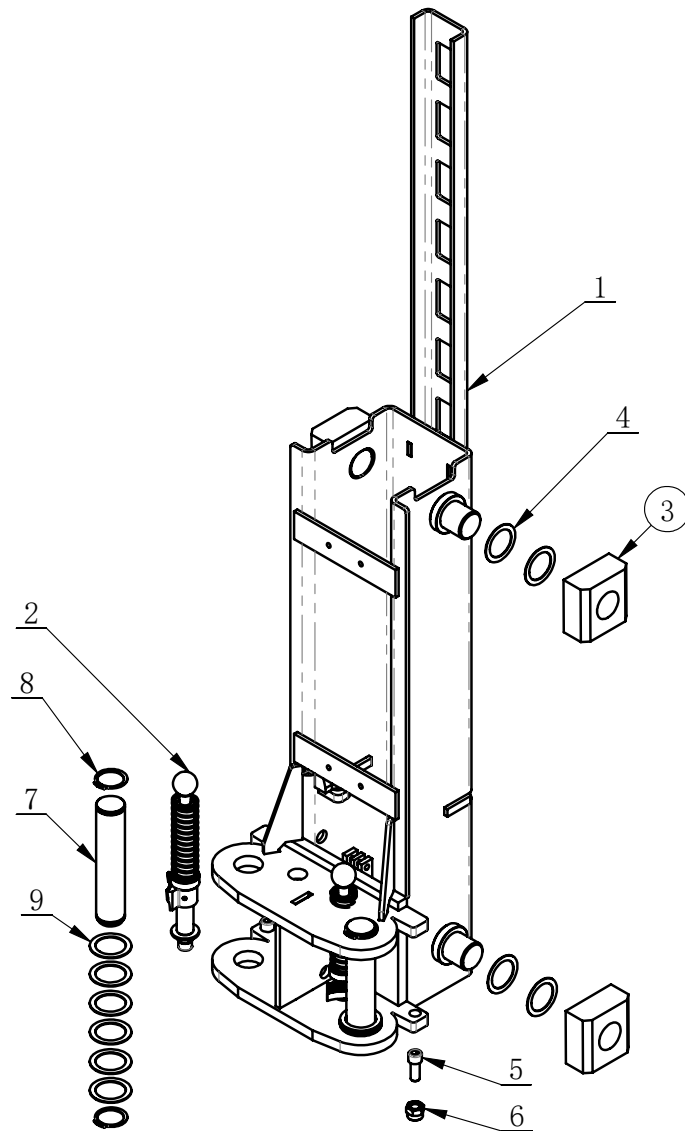
All cirplaced position numbers are recommended spare parts

J103UP-1C00000.

Revision A-01



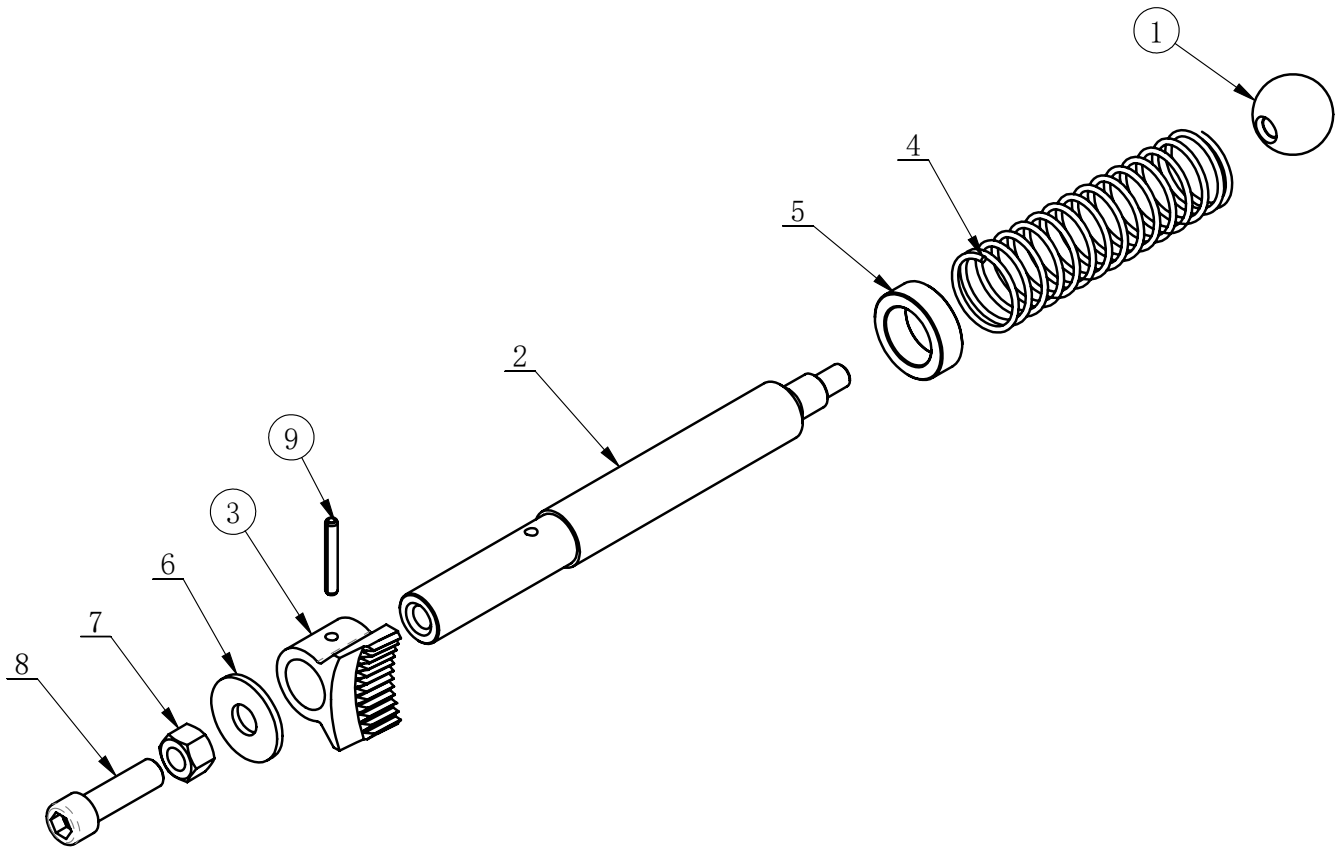
ITEM	PART. No	DESCRIPTION	QT. Y
1	J103-1010000	COLUMN WELDING	1
2	J101-1040000	PULLEY ASSEMBLY	1
3	J101-1070000	OIL CYLINDER ASSEMBLY	1
4	J101-1151000	MICRO SWITCH ASSEMBLY	1
5	J101-1000003	PROTECTIVE RUBBER	2
6	J101-1000004	TENSION SPRING	2
7	J101-1000027	OPEN WSAHER	2
8	J101-1000028	SPRING SHAFT HANGER	1
9	J101-1000036	WASHER	4
10	J111-1210002	ROOF PILLAR	1
11	J101-1080002	SYNCHRONOUS PULLEY	2
12	GB12613-25X28X15	SUPPERSED SHAFT SLEEVE	2
13	GB894. 2-25	SHAFT ELATIC RETAINING RING B-TYPE	2
14	GB6170-M6	HEXANGULAR NUT	2
15	GB6170-M8	HEXANGULAR NUT	2
16	GB70. 1-M6×45	INNER HEXA CYLINDRICAL SCREW	2
17	GB70. 1-M8×20	INNER HEXA CYLINDRICAL SCREW	2
18	GB95-8	FLAT WASHER	6
19	GB70. 1-M8×16	INNER HEXA CYLINDRICAL SCREW	4
20	GB79-M10×20	INNER HEXA CYLINDRICAL TERMINUS SET SCREW	1
21	GB5783-M8×16	HEXANGULAR BOLT	2
22	J101-1090000	COMPOUND CHAIN BLOCK WELDING	1
23	GB6172. 1-M16	HEXANGULAR THIN NUT	1
24	GB6178-M16	HEXANGUAL SLOT NUT 1TYPE A GRADE	1
25	GB91-3. 2×40	SLOTTED PIN	1
26	GB17880. 5-M6×16. 5	FLAT HEXA RIVETTED NUT	4
27	J101-1080006	SYNCHRONOUS STEEL ROPE	1
28	J101-1000001	FLAT WEDGE CHAIN	1
29	J101-1123008	TERMINAL STATION	1
30	J111-1210001	SWITCH BRACKET	1
31	MH-12-1B00002	TRAVEL SWITCH	1
32	J111-1220000	LIMIT DEVICE	1
33	J111-1123600	TRAVEL SWITCH WIRING	1
34	GB95-5	FLAT WASHER	8
35	GB93-5	STANDARD SPRING WASHER	8
36	GB70. 1-M5×12	INNER HEXA CYLINDRICAL SCREW	8



ITEM	PART. No	DESCRIPTION	QT. Y
1	J101-1041000	LIFTING BODY	1
2	J101-1110000	LOCK SHAFT ASSEMBLY	2
3	J101-1040001	NYLON SLIDING BLOCK	4
4	J101-1040003	ADJUSTABLE PAD OF SLIDING BLOCK	8
5	GB70. 1-M12×30-12. 9	INNER HEXA CYLINDRICAL SCREW	2
6	GB889. 1-M14	1-TYPE PREVAILING TORQUE TYPE HEXAGON LOCK NUT	2
7	J101-1000002	ARM SHAFT	2
8	GB894. 2-38	SHAFT ELATIC RETAINING RING B-TYPE	4
9	J101-1040002	ADJUSTABLE PAD OF SLIDING BLOCK	12

J101-1110000.

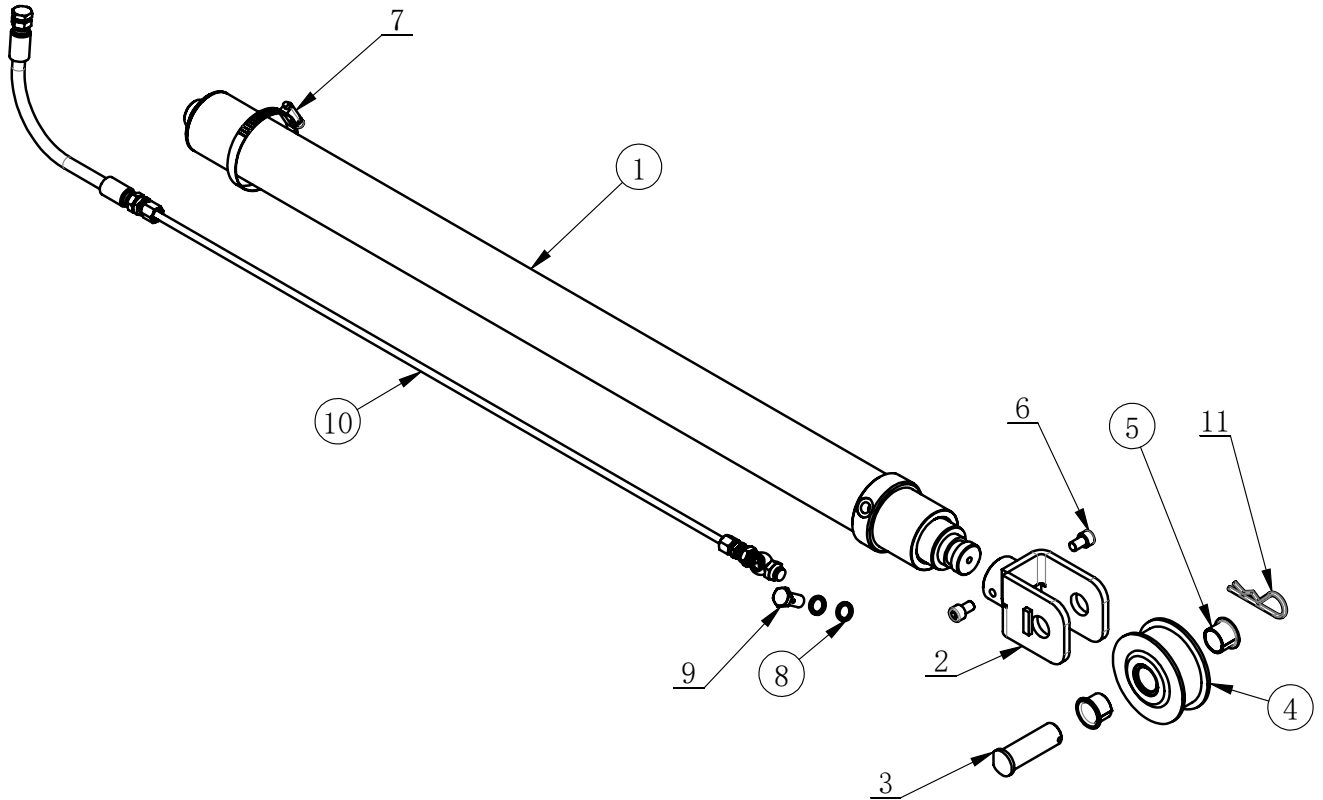
Revision A-03



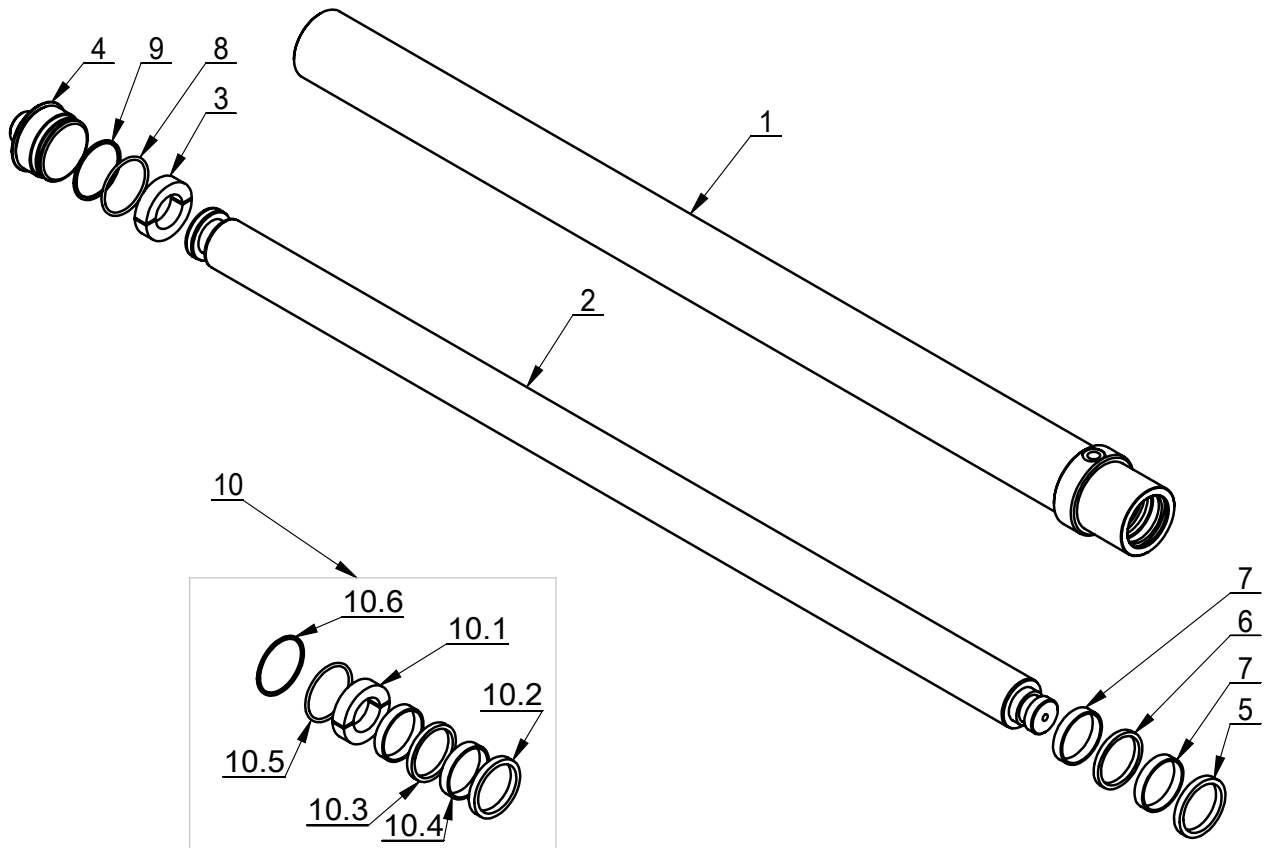
ITEM	PART. No	DESCRIPTION	QT. Y
1	MH-12-1360011	HAND LEVER	1
2	J101-1110001	LOCK SHAFT	1
3	J101-1110002	LOCK GEAR	1
4	J101-1110003	GEAR LOCK SUPPRESSION SPRING	1
5	J101-1110004	BUSHING	1
6	GB96. 2-12	LARGE WASHER C GRADE	1
7	GB41-M12	HEXANGULAR NUT	1
8	GB70. 1-M12×40	INNER HEXA CYLINDRICAL SCREW	1
9	GB879. 1-5×35	ELASTIC CYLINDRICAL PIN, HEAVY	1

J101-1070000.

Revision A-03



ITEM	PART. No	DESCRIPTION	QT. Y
1	J101-1071000	OIL CYLINDER	1
2	J101-1072000	WELDING FORK	1
3	J101-1070001	SPROCKET SHAFT	1
4	J101-1070002	CHAIN GUIDE ROLLER	1
5	SF-1-25215	Self-Lubricating Bushing	2
6	GB70. 1-M10×16	INNER HEXA CYLINDRICAL SCREW	2
7	J101-1000033	HOSE CLAMP	1
8	JB982-13	COMBINATION PAD	2
9	J101-1140005	BRITISH HINGE BOLTS	1
10	J101-1140200	OILHOSE ASSEMBLY	1
11	C-01-100000B	R-SHAPE PIN	1

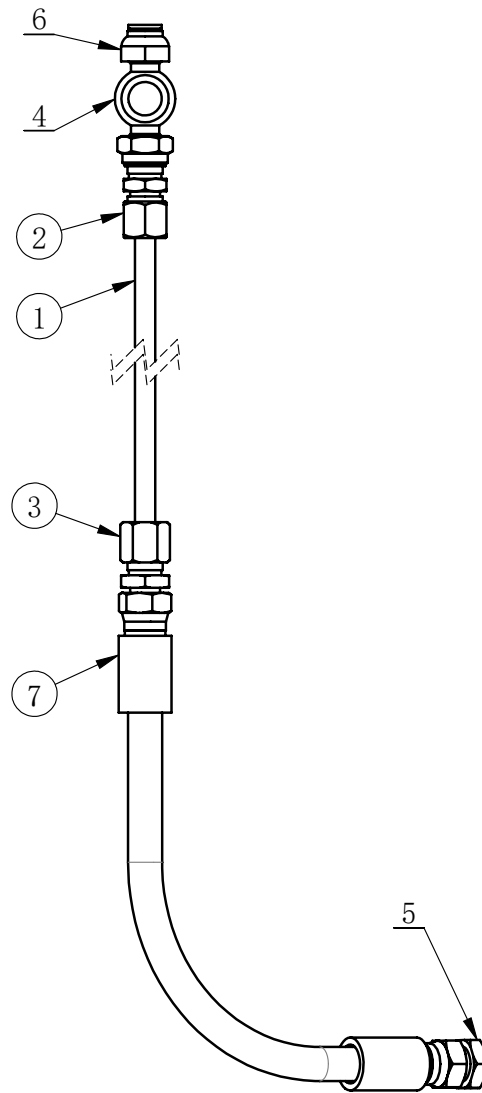


ITEM	PART NUMBER	Description.	QT/Y
1	J101-1071000-A-01	CYLINDER TUBE	1
2	J101-1071000-A-02	PISTON ROD	1
3	J101-1071000-A-03	PISTON SUPPORT RING	1
4	J101-1071000-A-04	END CUP	1
5	4630000	SHAFT SEAL RING	1
6	4306000	DUST RING	1
7	J101-1071000-A-05	GUIDE BELT	2
8	GB1235-60×3.1	O-RING	1
9	J101-1071000-A-06	RETAINING ROD	1
10	J101-1071000MFJ	SEAL RING SET	1
10.1	J101-1071000-A-03	PISTON SUPPORT RING	1
10.2	4630000	SHAFT SEAL RING	1
10.3	4306000	DUST RING	1
10.4	J101-1071000-A-05	GUIDE BELT	2
10.5	GB1235-60×3.1	O-RING	1
10.6	J101-1071000-A-06	RETAINING ROD	1



J101-1140200.

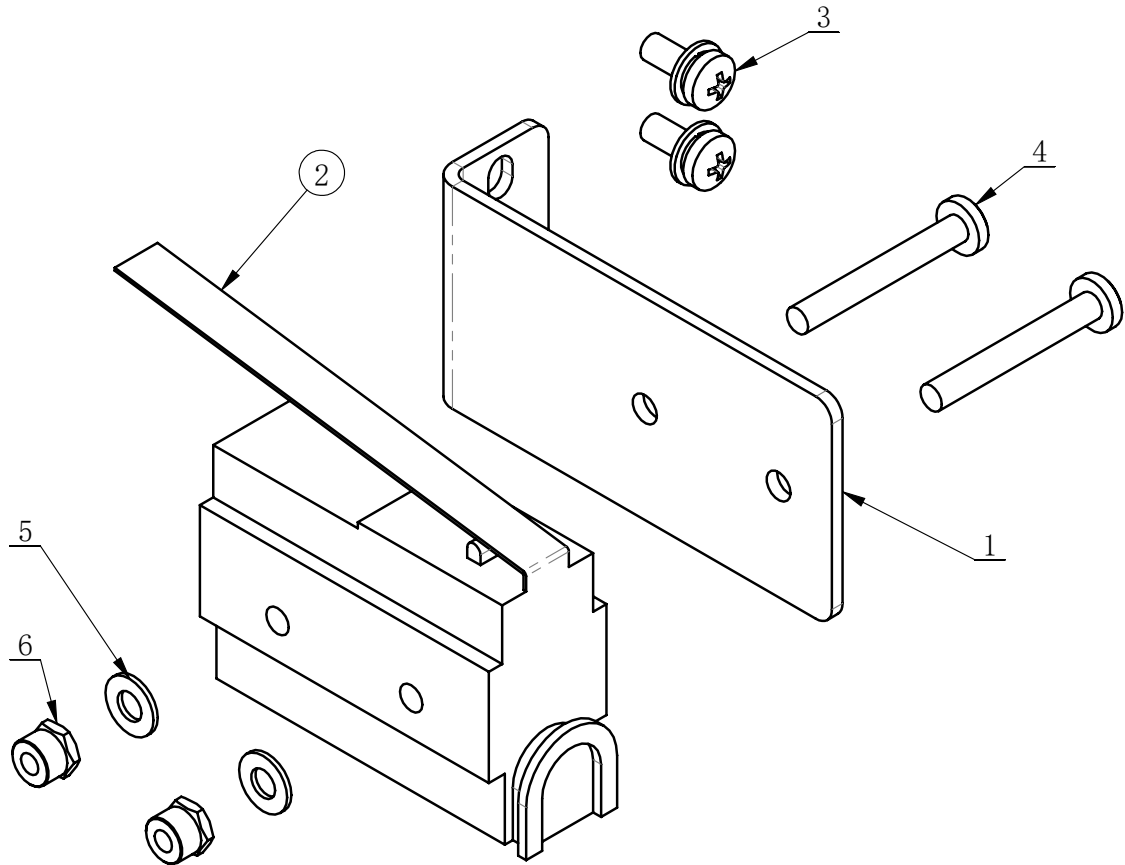
Revision A-03



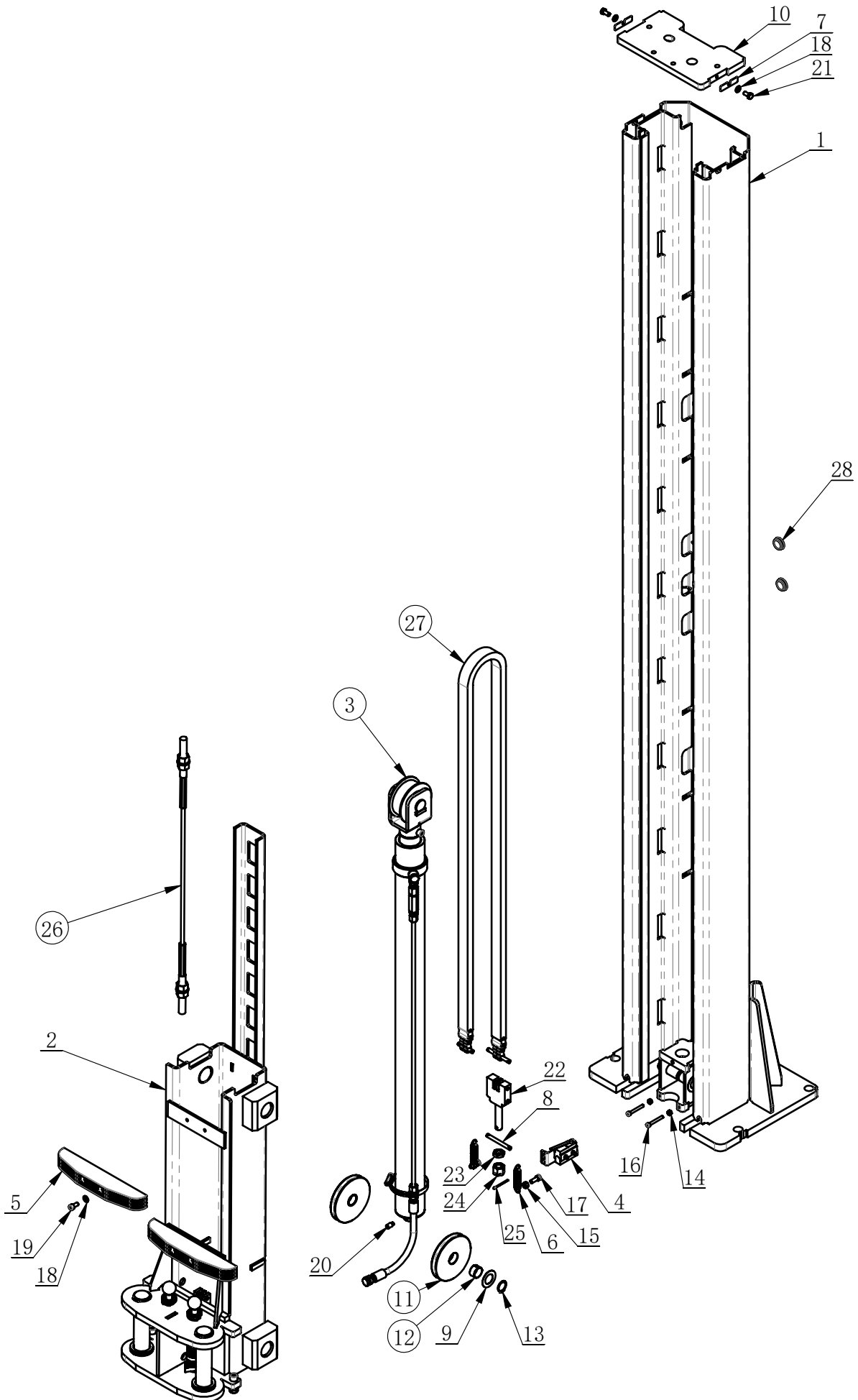
ITEM	PART. No	DESCRIPTION	QT. Y
1	J101-1140009	OIL HOSE	1
2	J101-1146000	CUTTING SLEEVE JOINT	1
3	J101-1142000	CUTTING SLEEVE JOINT ASSEMBLY	1
4	J101-1140004	EYES JOINT	1
5	J101-2000011	INNER CONE PLUG	1
6	9B-04	PLUG	1
7	J101-1145000	SUPPRESSED RUBBER TUBE	1

J101-1151000.

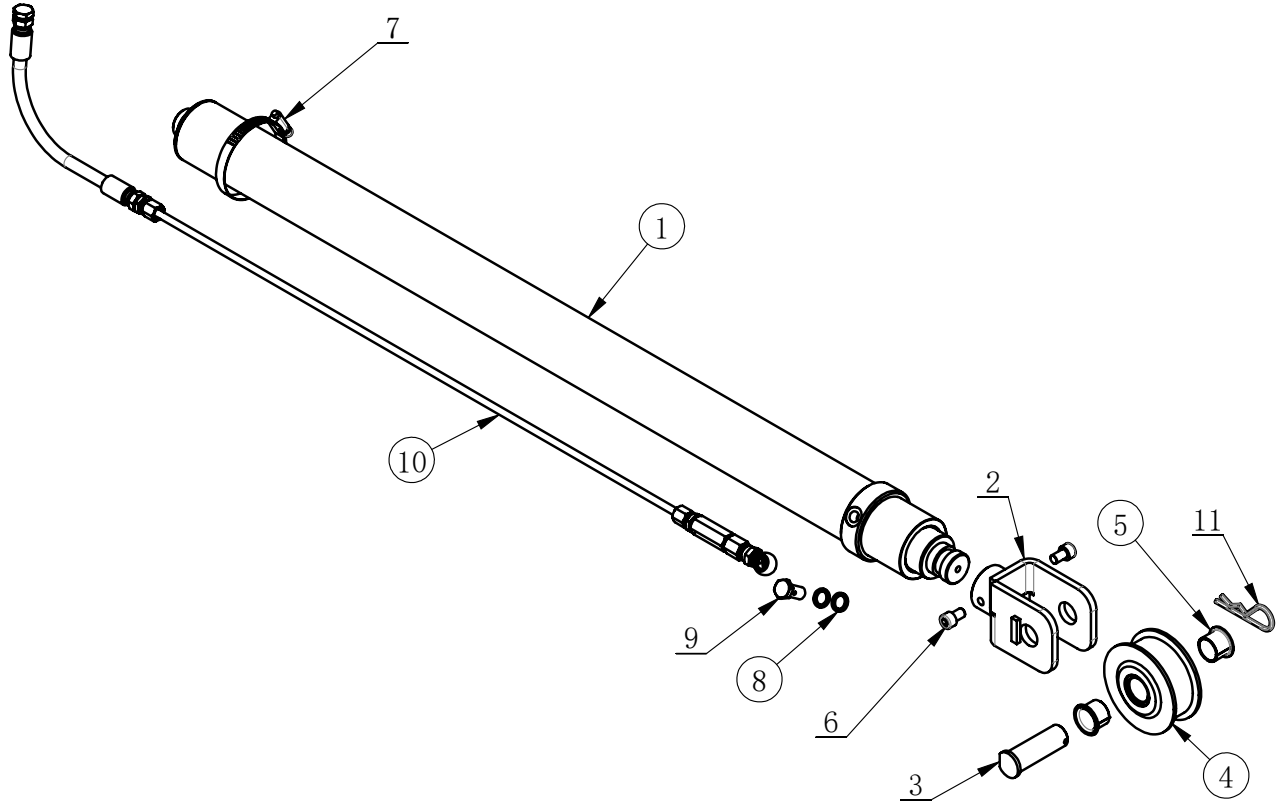
Revision A-03



ITEM	PART.No	DESCRIPTION	QT. Y
1	J101-1151001	MICRO SWITCH BASE	1
2	J101-1151003	MICRO SWITCH	1
3	GB9074. 4-M4x10	COMBINATION SCREW	2
4	GB818-M4×30-H	CROSS PANHEAD SCREW	2
5	GB95-4	FLAT WASHER	2
6	GB889. 1-M4	1-TYPE PREVAILING TORQUE TYPE HEXAGON LOCK NUT	2



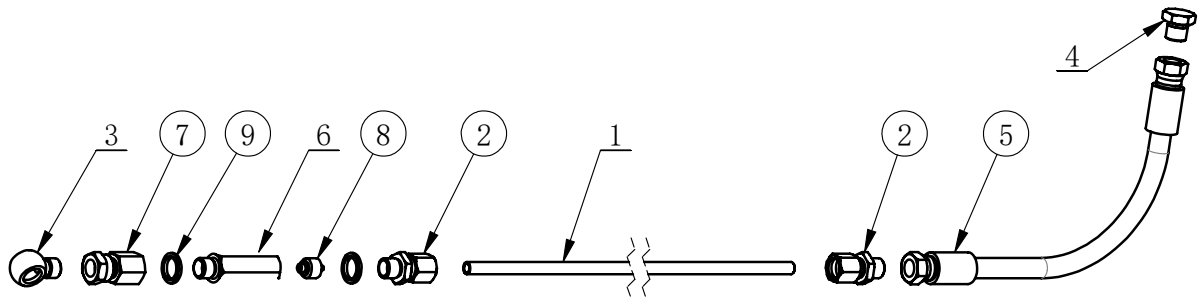
ITEM	PART. No	DESCRIPTION	QT. Y
1	J103-1010000	COLUMN WELDING	1
2	J101-1040000	PULLEY ASSEMBLY	1
3	J101-1070000B	OIL CYLINDER ASSEMBLY	1
4	J101-1151000	MICRO SWITCH ASSEMBLY	1
5	J101-1000003	PROTECTIVE RUBBER	2
6	J101-1000004	TENSION SPRING	2
7	J101-1000027	OPEN WSAHER	2
8	J101-1000028	SPRING SHAFT HANGER	1
9	J101-1000036	WASHER	4
10	J101-1080001	ROOF PILLAR	1
11	J103-1000001	SYNCHRONOUS PULLEY	2
12	GB12613-25X28X15	SUPPERSSED SHAFT SLEEVE	2
13	GB894. 2-25	SHAFT ELATIC RETAINING RING B-TYPE	2
14	GB6170-M6	HEXANGULAR NUT	2
15	GB6170-M8	HEXANGULAR NUT	2
16	GB70. 1-M6×45	INNER HEXA CYLINDRICAL SCREW	2
17	GB70. 1-M8×20	INNER HEXA CYLINDRICAL SCREW	2
18	GB95-8	FLAT WASHER	6
19	GB70. 1-M8×16	INNER HEXA CYLINDRICAL SCREW	4
20	GB79-M10×20	INNER HEXA CYLINDRICAL TERMINUS SET SCREW	1
21	GB5783-M8×16	HEXANGULAR BOLT	2
22	J101-1090000	COMPOUND CHAIN BLOCK WELDING	1
23	GB6172. 1-M16	HEXANGULAR THIN NUT	1
24	GB6178-M16	HEXANGUAL SLOT NUT 1TYPE A GRADE	1
25	GB91-3. 2×40	SLOTTED PIN	1
26	J101-1080006	SYNCHRONOUS STEEL ROPE	1
27	J101-1000001	FLAT WEDGE CHAIN	1
28	J101-1000030	RUBBER STOPPER	4



ITEM	PART. No	DESCRIPTION	QT. Y
1	J101-1071000	OIL CYLINDER	1
2	J101-1072000	WELDING FORK	1
3	J101-1070001	SPROCKET SHAFT	1
4	J101-1070002	CHAIN GUIDE ROLLER	1
5	SF-1-25215	Self-Lubricating Bushing	2
6	GB70. 1-M10×16	INNER HEXA CYLINDRICAL SCREW	2
7	J101-1000033	HOSE CLAMP	1
8	JB982-13	COMBINATION PAD	2
9	J101-1140005	BRITISH HINGE BOLTS	1
10	J101-1140400	OIL HOSE ASSEMBLY	1
11	C-01-100000B	R-SHAPE PIN	1

J101-1140400.

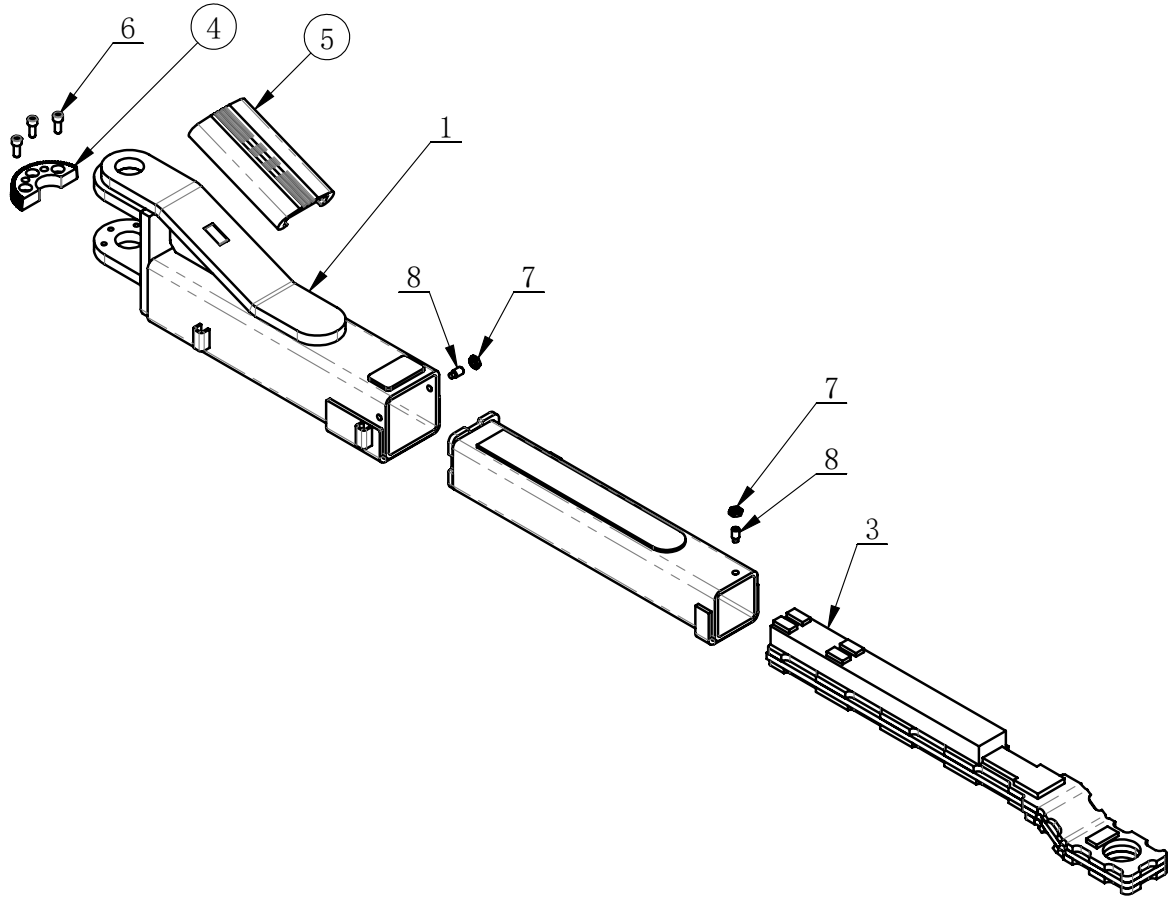
Revision A-03



ITEM	PART. No	DESCRIPTION	QT. Y
1	J101-1140006	OIL HOSE	1
2	J101-1142000	CUTTING SLEEVE JOINT ASSEMBLY	2
3	J101-1140008	MONOCULAR JOINT	1
4	J101-2000011	INNER CONE PLUG	1
5	J101-1145000	SUPPRESSED RUBBER TUBE	1
6	J101-1140011	PARACHUTE VALVE MALE & FEMALE CONNECTOR	1
7	J101-1140500	FEMALE CONNECTOR	1
8	J101-1143000	PARACHUTE VALVE	1
9	JB982-13	COMBINATION PAD	2

J103B-1050000.

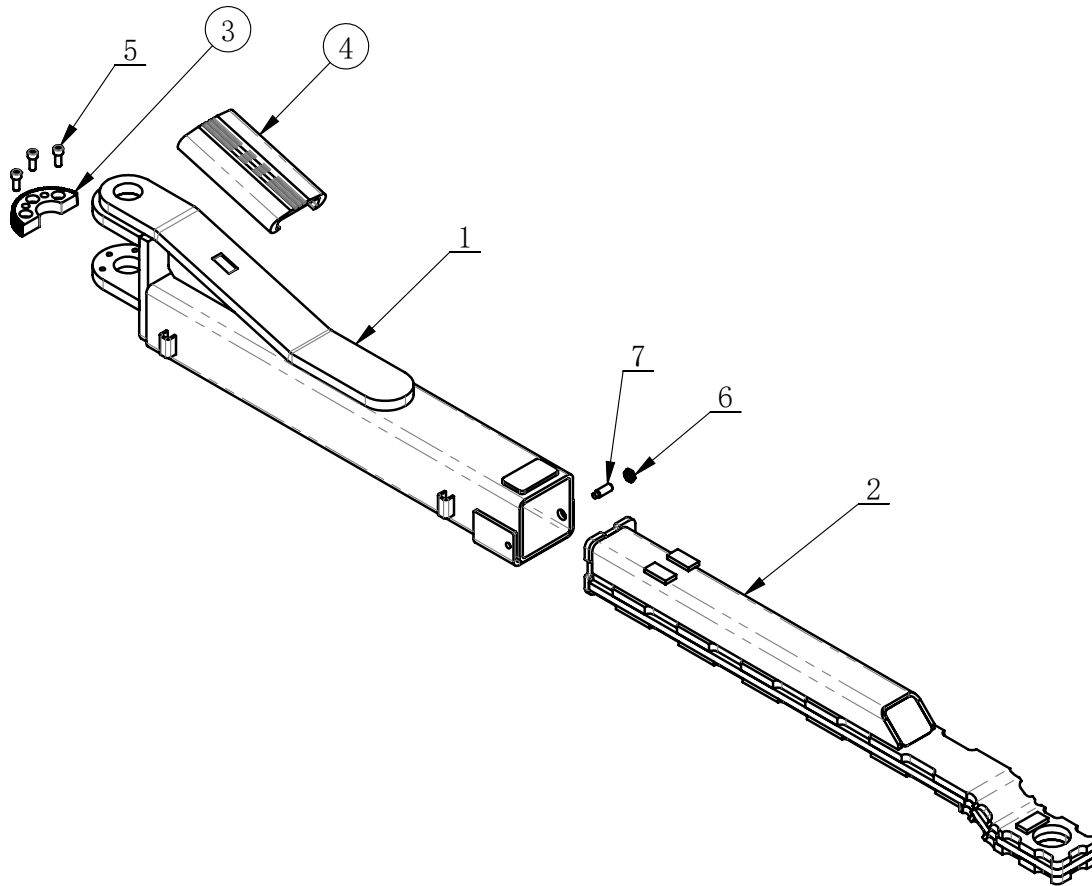
Revision A-01



ITEM	PART. No	DESCRIPTION	QT. Y
1	J101-1051000	600 STEP ARM	1
2	J101-1052000	498 STEP ARM	1
3	J103B-1053000	Short curved arm	1
4	J101-1050001	THE SECTOR GEAR	1
5	J101-1050002	RUBBER PROTECTIVE COVER	1
6	GB70. 1-M8×20-12. 9	INNER HEXA CYLINDRICAL SCREW	3
7	GB6172. 1-M10	HEXANGULAR THIN NUT	2
8	GB79-M10×20	INNER HEXA CYLINDRICAL TERMINUS SET SCREW	2

J103B-1060000.

Revision A-01

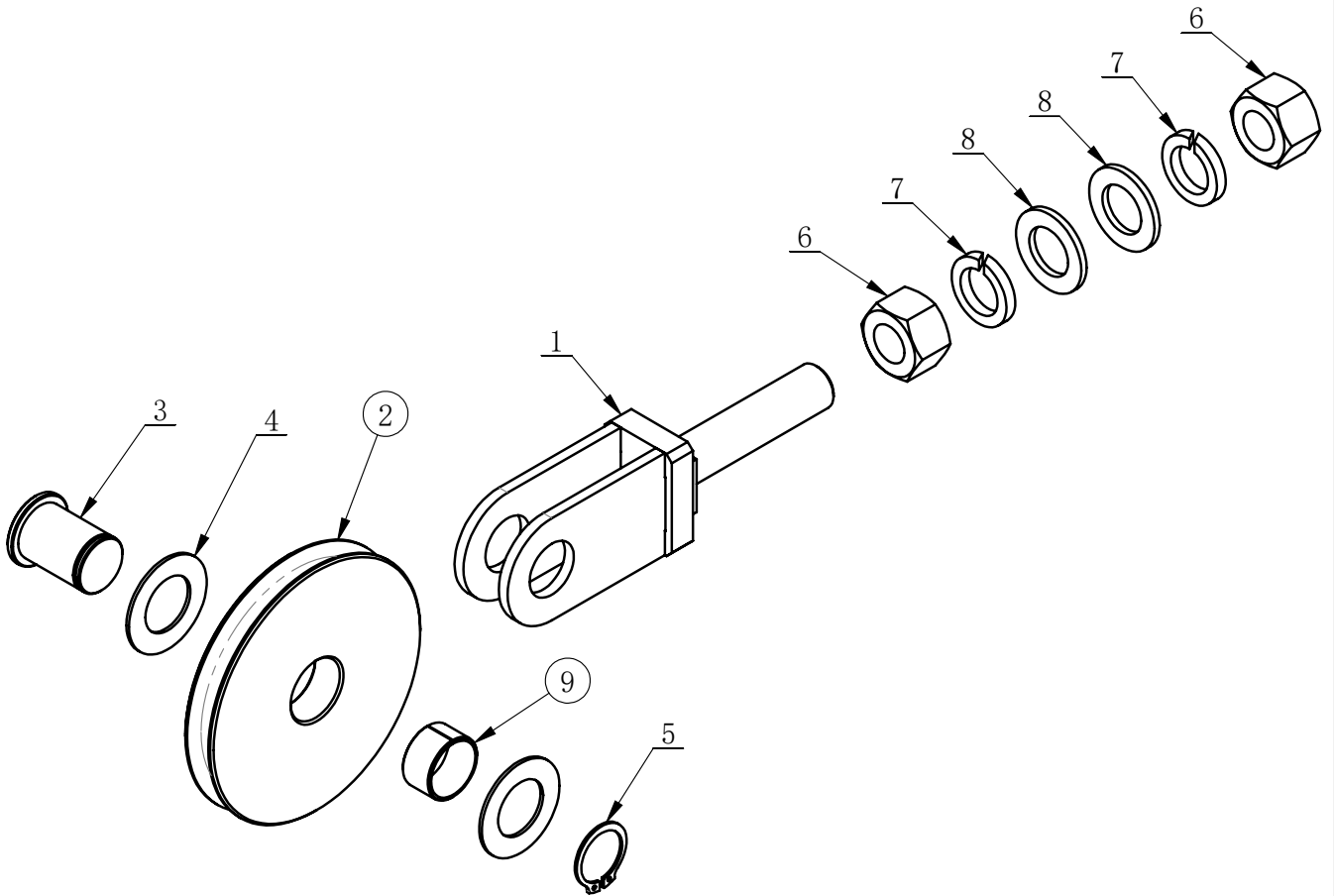


ITEM	PART. No	DESCRIPTION	QT. Y
1	J103G-1061000	STEP	1
2	J103B-1061000	Long curved arm	1
3	J101-1050001	THE SECTOR GEAR	1
4	J101-1050002	RUBBER PROTECTIVE COVER	1
5	GB70. 1-M8×20-12. 9	INNER HEXA CYLINDRICAL SCREW	3
6	GB6172. 1-M10	HEXANGULAR THIN NUT	1
7	GB79-M10×30	INNER HEXA CYLINDRICAL TERMINUS SET SCREW	1



J101-1080000.

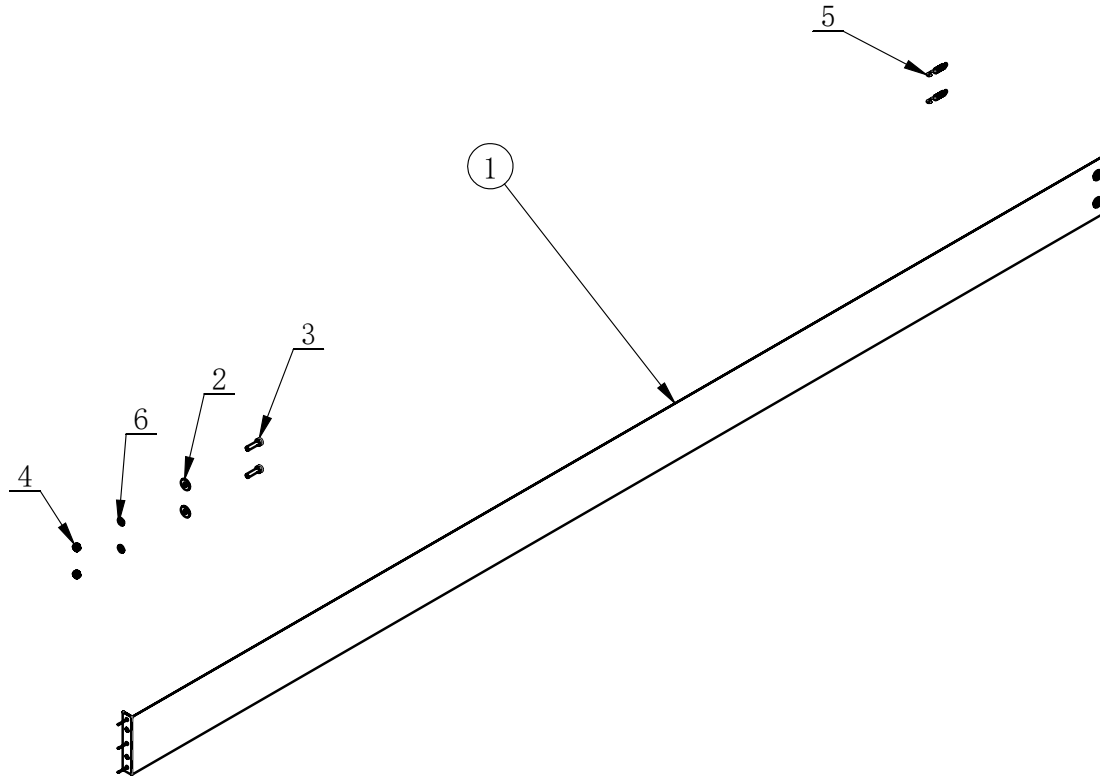
Revision A-03



ITEM	PART. No	DESCRIPTION	QT. Y
1	J101-1081000	PULLEY FORK FRAME	1
2	J101-1080002	SYNCHRONOUS PULLEY	1
3	J101-1080003	PULLEY SPINDLE	1
4	J101-1080004	WASHER	2
5	GB894.2-25	SHAFT ELATIC RETAINING RING B-TYPE	1
6	GB41-M20	HEXANGULAR NUT	2
7	GB93-20	STANDARD SPRING WASHER	2
8	GB95-20	FLAT WASHER	2
9	GB12613-25X28X15	SUPPERSED SHAFT SLEEVE	1

J101-1100000.

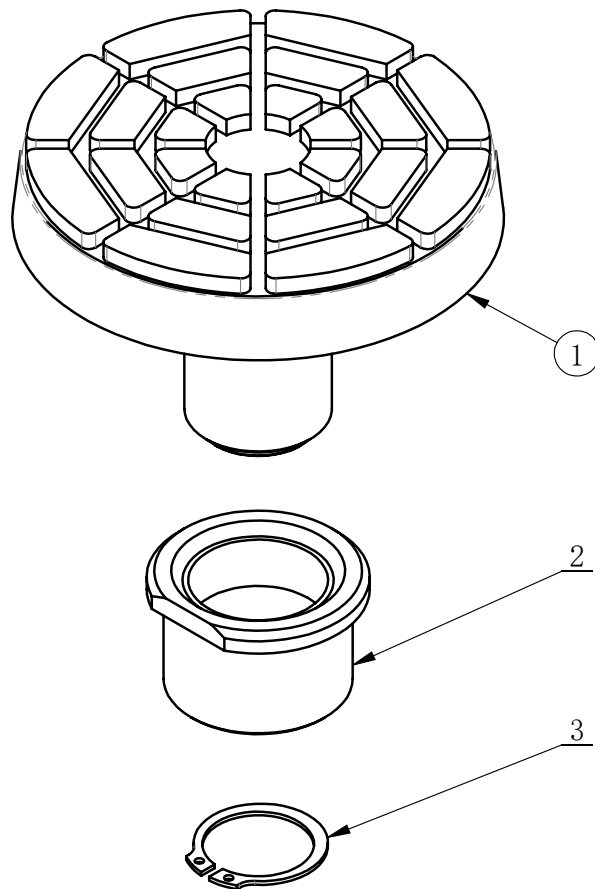
Revision A-03



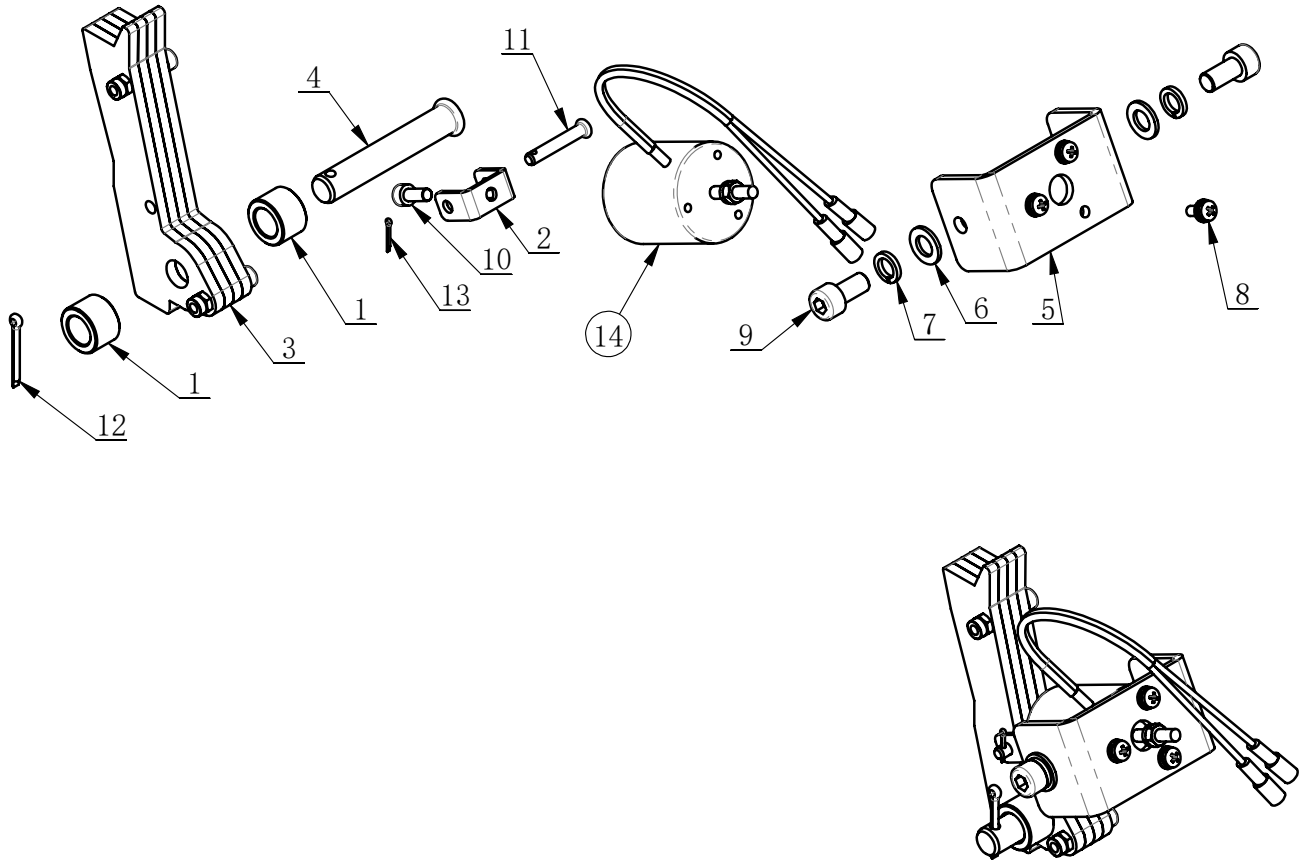
ITEM	PART. No	DESCRIPTION	QT. Y
1	J101-1101000	CURTAIN	1
2	GB96. 2-8	LARGE WASHER C GRADE	2
3	GB70. 1-M8×30	INNER HEXA CYLINDRICAL SCREW	2
4	GB6170-M8	HEXANGULAR NUT	2
5	J101-1100003	CURTAIN SPRING	2
6	GB95-8	FLAT WASHER	2

J201-1340000.

Revision A-03



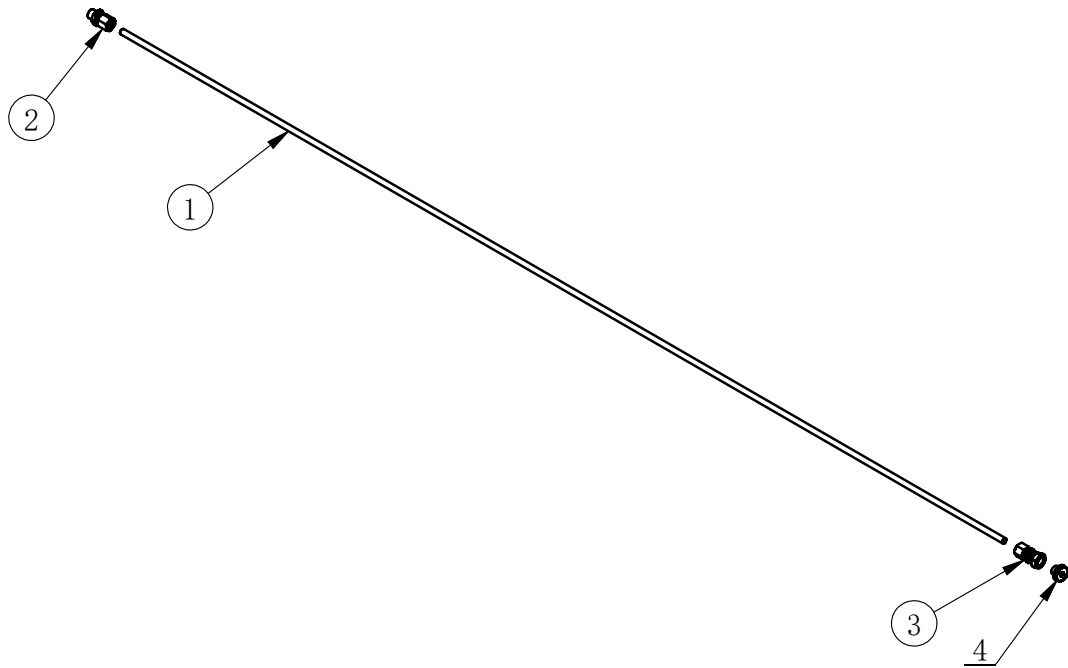
ITEM	PART. No	DESCRIPTION	QT. Y
1	J201-1341000	RUBBER PAD FOR THE LIFTING ARM	1
2	J101-1054002	BASE SCREW	1
3	GB894.2-32	SHAFT ELATIC RETAINING RING B-TYPE	1



ITEM	PART. No	DESCRIPTION	QT. Y
1	J113-1060002	LOCK PLATE SPACER	2
2	J113-1060004	ELECTROMAGNETIC U SHAPE FRAME	1
3	J113-1062000	LOCK SHEET ASSEMBLY	1
4	GB882-12×70	PIN SHAFT	1
5	J113-1063004	ELECTROMAGNETIC BENDING PLATE	1
6	GB95-8	FLAT WASHER	2
7	GB93-8	STANDARD SPRING WASHER	2
8	GB9074. 4-M4x10	COMBINATION SCREW	3
9	GB70. 1-M8×16	INNER HEXA CYLINDRICAL SCREW	2
10	GB70. 1-M5×12	INNER HEXA CYLINDRICAL SCREW	1
11	GB882-5×30	PIN SHAFT	1
12	GB91-3. 2×25	SLOTTED PIN	1
13	GB91-1. 6×10	SLOTTED PIN	1
14	J113-1060003	TRACTION ELECTROMAGNETIC	1

J101-1140100.

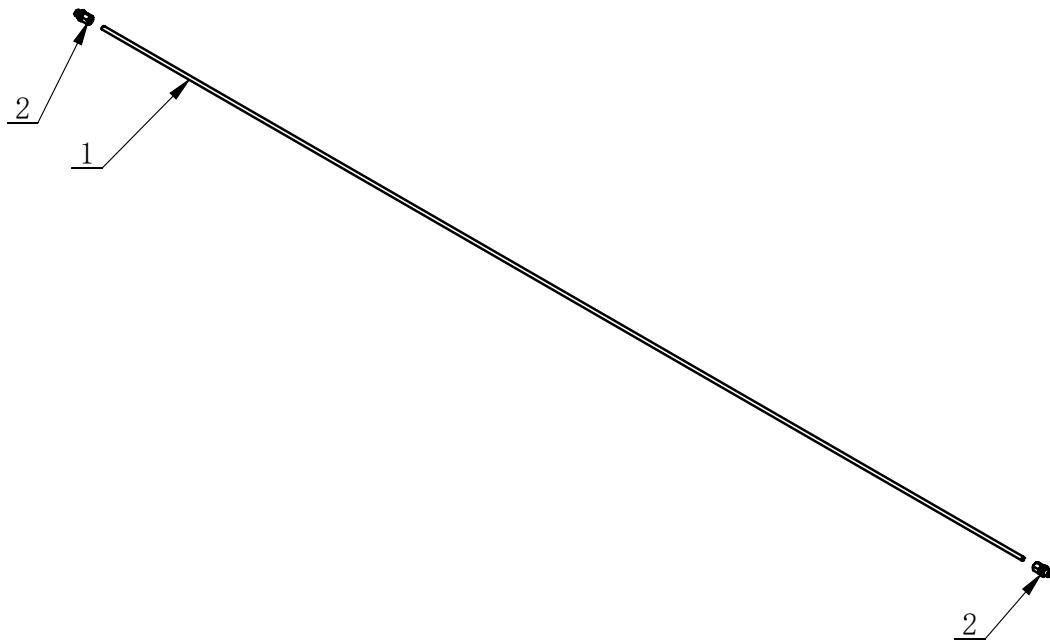
Revision A-03



ITEM	PART. No	DESCRIPTION	QT. Y
1	J101-1140001	OIL HOSE	1
2	J101-1142000	CUTTING SLEEVE JOINT ASSEMBLY	1
3	J101-1146000	CUTTING SLEEVE JOINT	1
4	J301-9400002	CLOSED PLUG G1/4	1

J101-1140300.

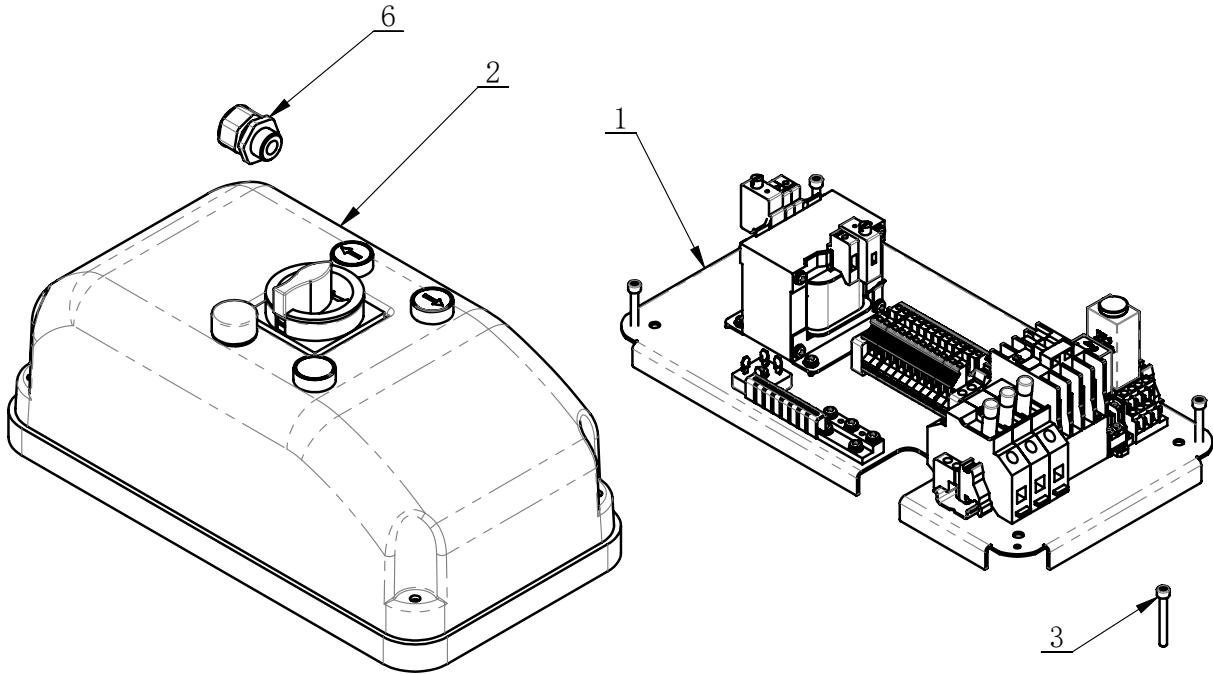
Revision A-03



ITEM	PART. No	DESCRIPTION	QT. Y
1	J101-1140007	OIL HOSE	1
2	J101-1142000	CUTTING SLEEVE JOINT ASSEMBLY	2

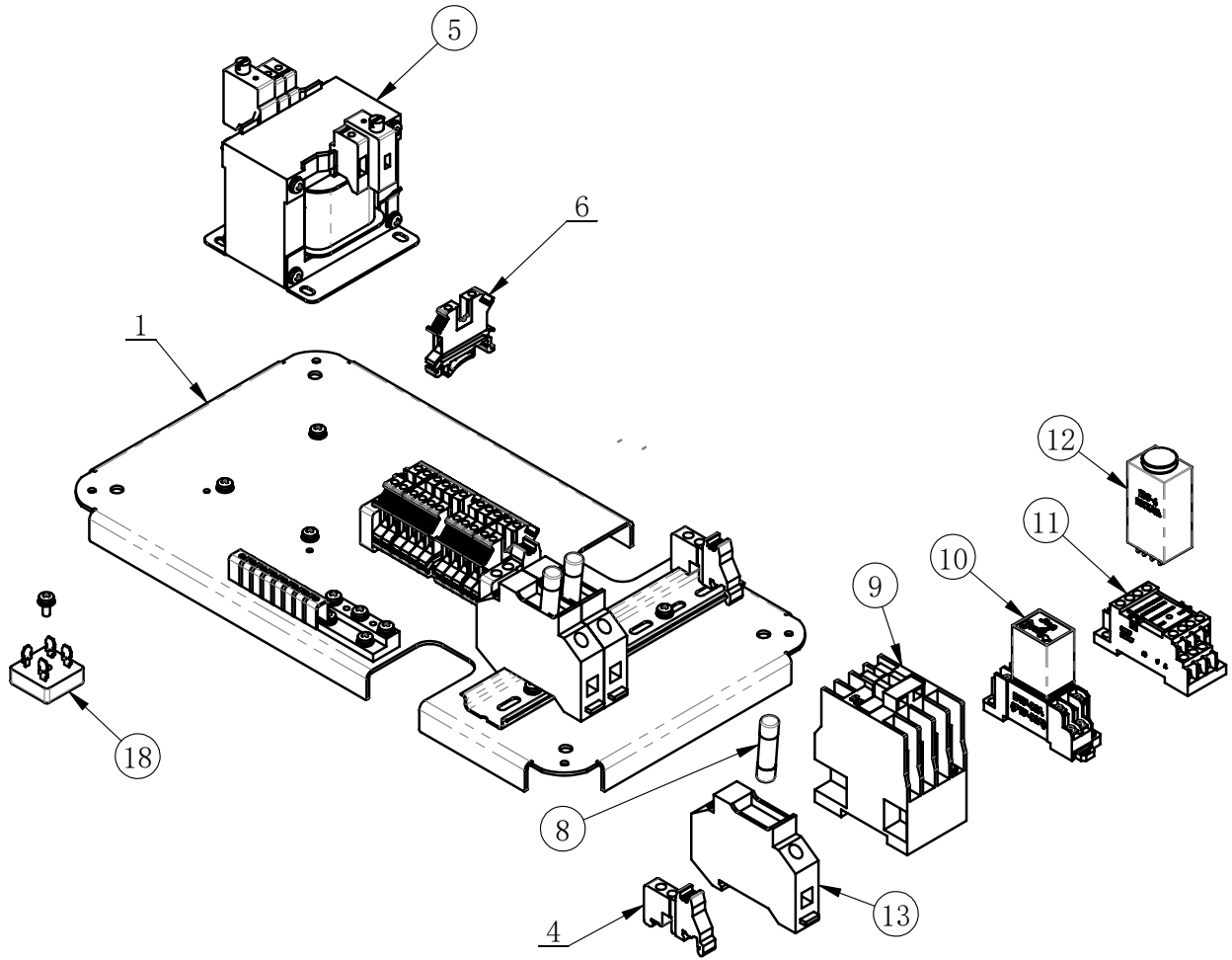
J101-1220000.

Revision A-03



J101-1220000 (400V/3P)			
ITEM	PART. No	DESCRIPTION	QT. Y
1	J101-1221000	ELECTRICAL CONTROL PANEL	1
2	J101-1122000	ELECTRICAL CONTROL BOX AND COVER ASSEMBLY	1
3	GB70.1-M5×40	INNER HEXA CYLINDRICAL SCREW	4
6	TC-E-7700020	CABLE LOCK HEAD M20X1.5	1

J101-1610000 (230V/1P)			
ITEM	PART. No	DESCRIPTION	QT. Y
1	J101-1611000	ELECTRICAL CONTROL PANEL	1
2	J101-1512000	ELECTRICAL CONTROL BOX AND COVER ASSEMBLY	1



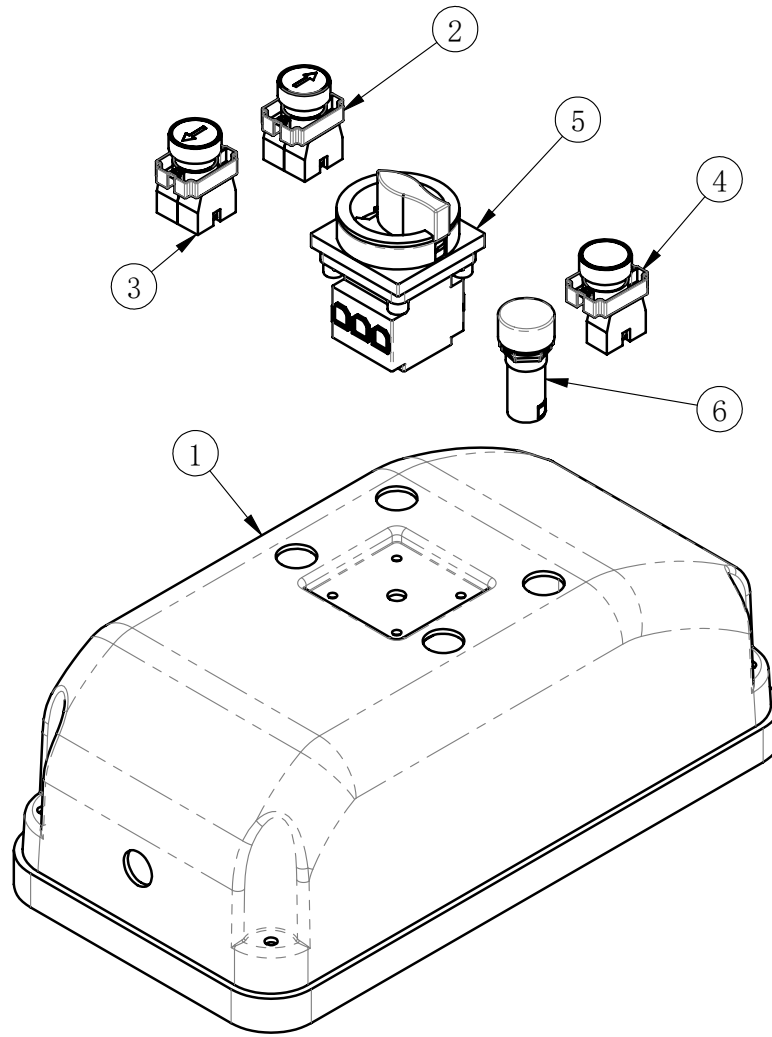
ITEM	PART. No	DESCRIPTION	QT. Y
1	J101-1121001	Electro Plate	1
4	TC-E-5130000	Connector	4
5	TC-E-3840232	Transformer	1
6	TC-E-5110025	Connector	12
8	TC-E-7101512	Fuse	3
9	TC-E-4280124	AC CONTACTOR	1
10	TC-E-4400224	intermediate relay	1
11	TC-E-43Z6524	Socket	1
12	TC-E-43Z6424	Time relay	1
13	TC-E-7128323	Fuse Holder	3
18	TC-E-7103510	Rectifier bridge	1

J101-1611000 (230V/1P)			
8	MF-01-8120003	Fuse	2
9	TC-E-4220124	AC CONTACTOR	1



J101-1122000.

Revision A-03

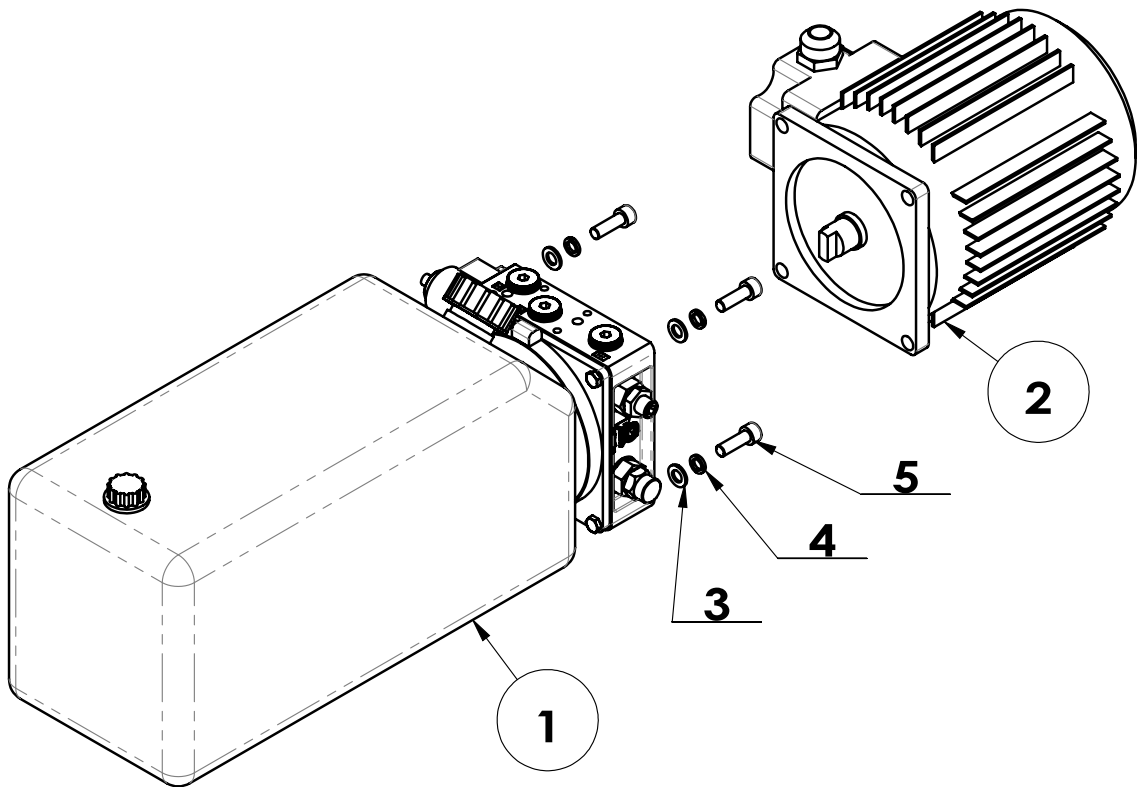


ITEM	PART.No	DESCRIPTION	QT. Y
1	J101-1122001	Plastic cover	1
2	J101-1122M00	Push Button	1
3	TC-E-2702343	Push Button	1
4	TC-E-270BA31	Push Button	1
5	TC-E-2401616	Main Switch	1
6	TC-E-7202409	Power Indicator Lamp	1

J101-1611000 (230V/1P)

J101-1190000

Revision A-03



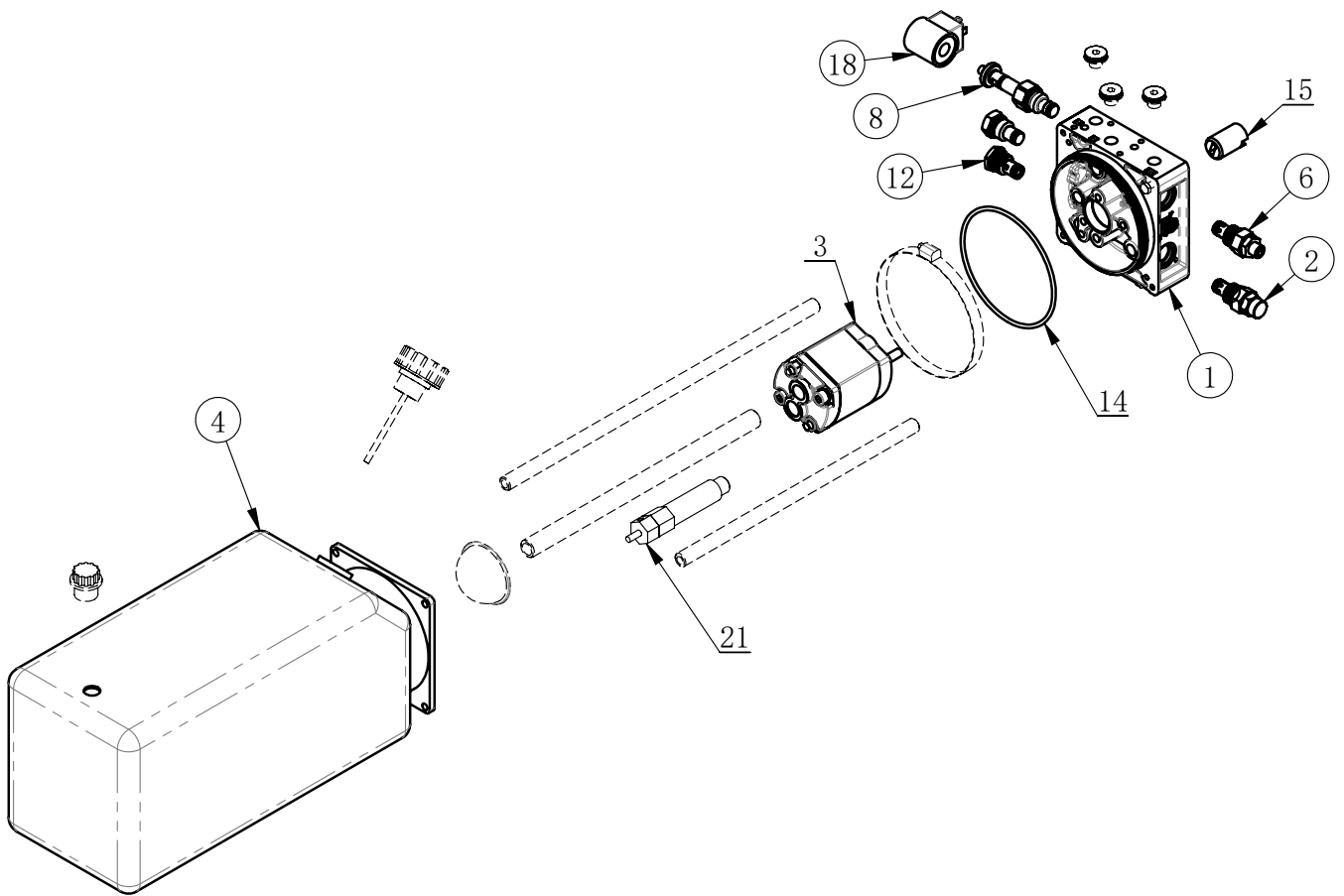
J101-1190000 (400V/3P)			
ITEM	PART. No	DESCRIPTION	QT. Y
1	J101-1132000	Hydraulic pump unit	1
2	J101-1131000	Electro Motor	1
3	GB95-8	FLAT WASHER	4
4	GB93-8	STANDARD SPRING WASHER	4
5	GB70.1-M8×25	INNER HEXA CYLINDRICAL SCREW	4

J101-1170000 (230V/50Hz/1P)			
ITEM	PART. No	DESCRIPTION	QT. Y
1	J101-1171A00	Hydraulic pump unit	1
2	J101-1501001	Electro Motor	1

J101-1200000 (230V/60Hz/1P)			
ITEM	PART. No	DESCRIPTION	QT. Y
1	J101-1171A00	Hydraulic pump unit	1
2	J101-1501002	Electro Motor	1

J101-1132000

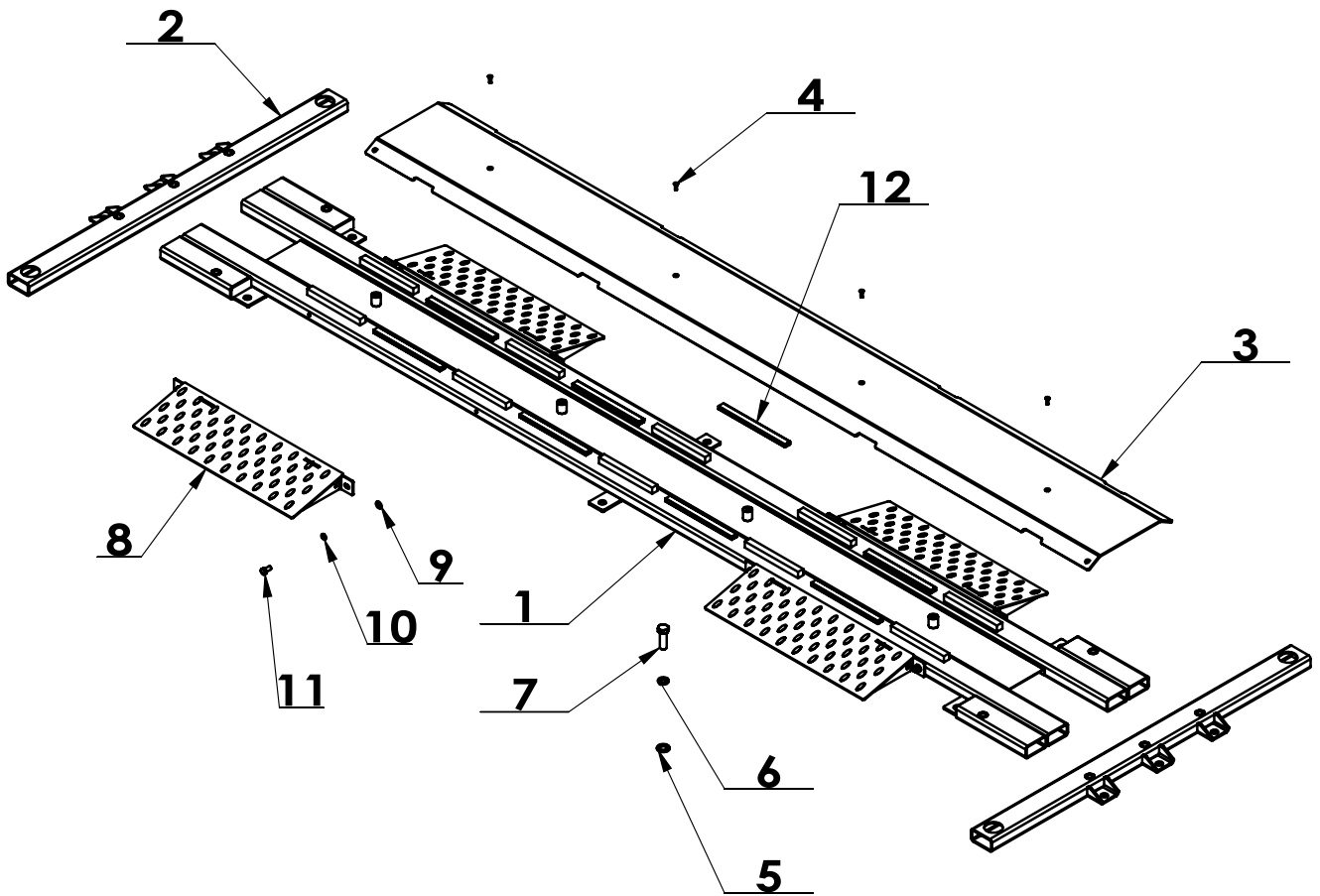
Revision A-03



J101-1132000 (400V/3P)			
ITEM	PART. No	DESCRIPTION	QT. Y
1	J601-1921001	Central manifold type one	1
2	J401-1331015	Relief valve	1
3	J401-1331007-220	Gear pump	1
4	J101-1132002	SPUARE FUEL TANK	1
6	J401-1331016	Adjustable flow valve	1
8	J401-1331002	Solenoid 2/2 way valve 3/4-16 UNF	1
12	TC-20-1031206	check valve ball type	1
14	UF2057	O Seal ring $\phi 117*3.55$	1
15	J101-1130101	Relief valve dumpener	1
18	J401-1331003	Coil 24V AC	1

J101-1181000 (230V/50Hz/1P)			
3	J101-1132A02-1P	Gear pump	1
21	J401-1331018	Starting valve Lengthen	1

J101-1171B00 (230V/60Hz/1P)			
3	J101-1171B00-1P	Gear pump	1
21	J401-1331018	Starting valve Lengthen	1



ITEM	PART. No	DESCRIPTION	QT. Y
1	J103G-8100000	main body	1
2	J103G-8200000	beam	2
3	J103G-8000001	Cover	1
4	GB70. 3-M6×20	INNER COUNTERSUNK SCREW	4
5	GB95-18	FLAT WASHER	10
6	GB93-18	STANDARD SPRING WASHER	10
7	GB5783-M18×55	HEXANGULAR BOLT	10
8	J103G-8300000	Ramp	4
9	GB95-10	FLAT WASHER	8
10	GB93-10	STANDARD SPRING WASHER	8
11	GB5783-M10×20	HEXANGULAR BOLT	8
12	J103G-0000001	PVC Trunking	8