



*Makers of the famous  
TWO-POST AND FOUR-POST  
HOISTS & ACCESSORIES*

---

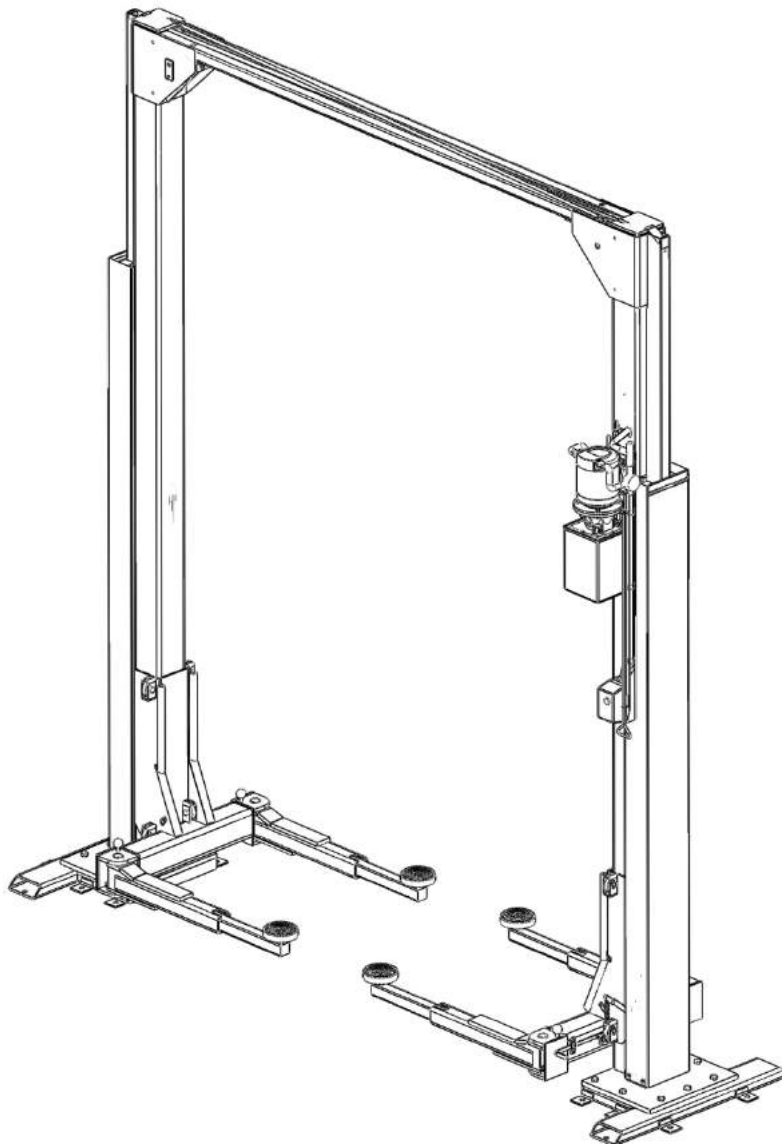
**MOLNAR ENGINEERING PTY. LTD.**

---

## **TWO POST 4 TONNE CLEAR FLOOR HOIST**

**MODEL 2P4T – PREMIUM SERIES 3**

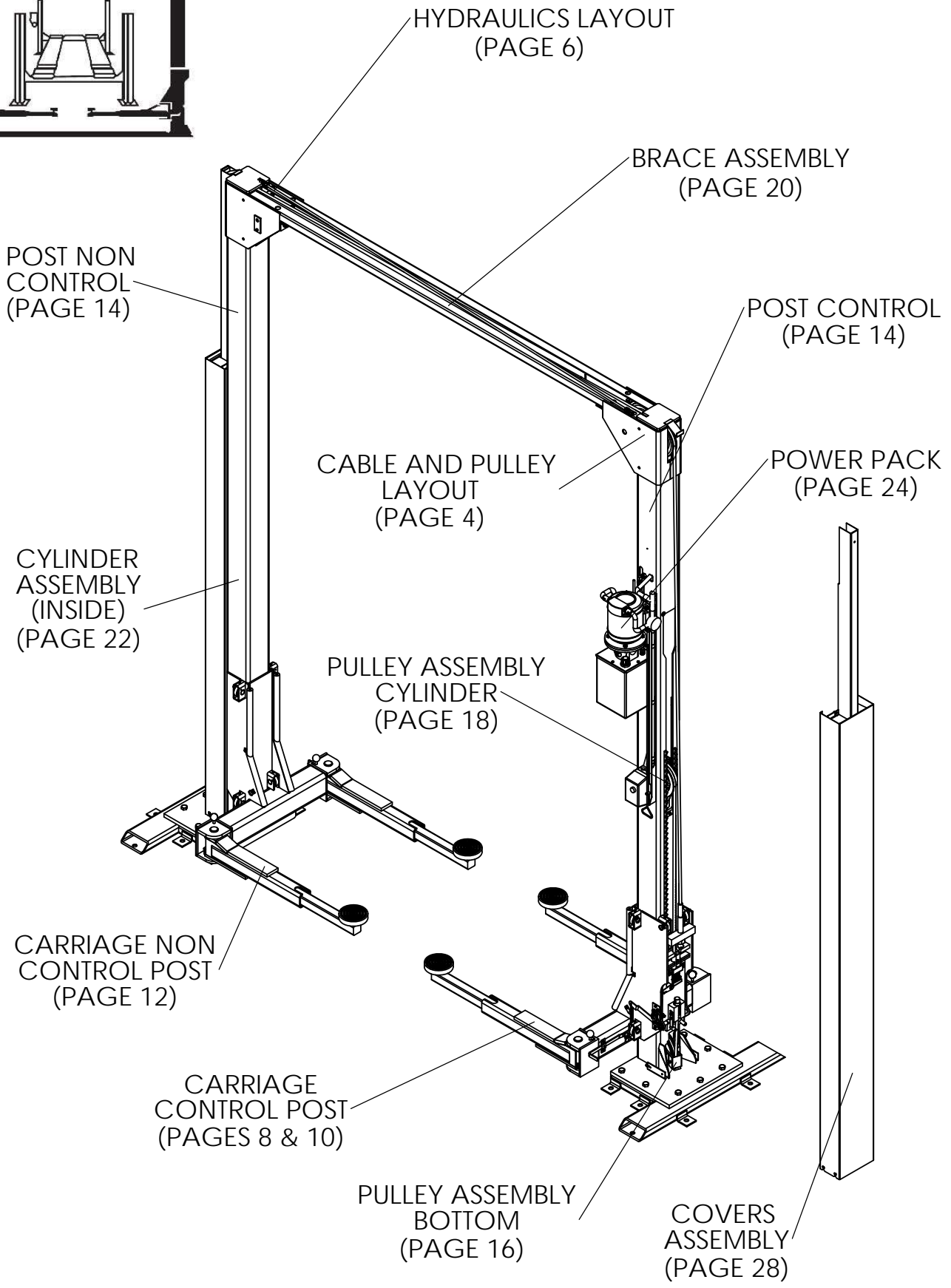
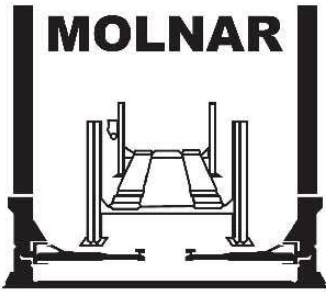
### **PARTS IDENTIFICATION MANUAL**



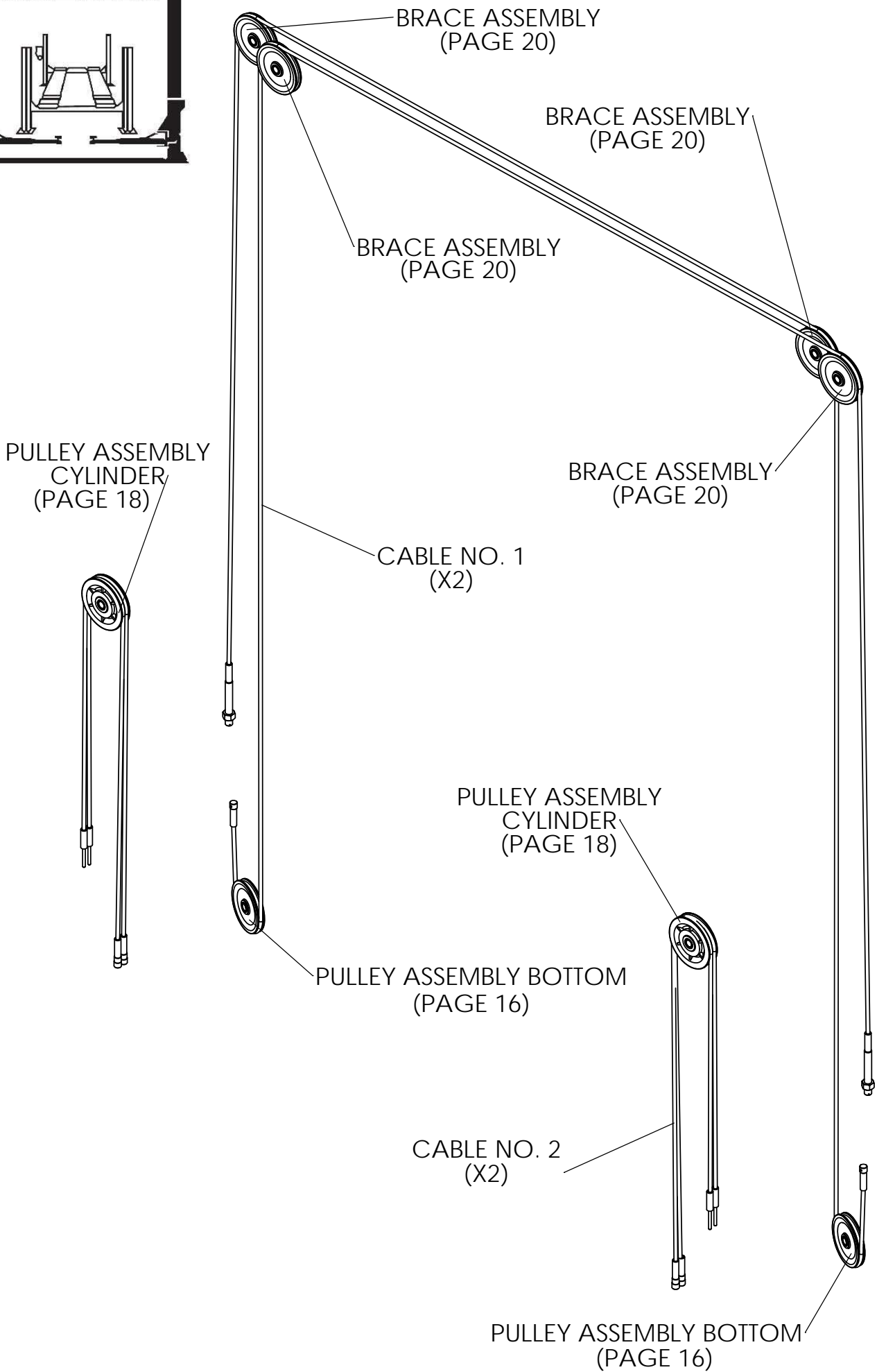
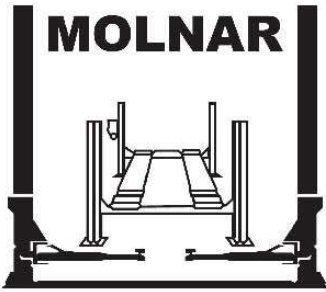
## Contents

Home Page .....	3
Cable and Pulley Layout .....	4
Cable Bill of Materials .....	5
Hydraulics Layout .....	6
Hydraulics Layout Bill of Materials .....	7
Carriage Control Post Page 1 .....	8
Carriage Control Post Bill of Materials 1 .....	9
Carriage Control Post Page 2 .....	10
Carriage Control Post Bill of Materials 2 .....	11
Carriage Non Control Post .....	12
Carriage Non Control Post Bill of Materials .....	13
Post Assemblies .....	14
Post Assemblies Bill of Materials .....	15
Pulley Assembly Bottom Control Post .....	16
Pulley Assembly Bottom Control Post Bill of Materials .....	17
Pulley Assembly Cylinder .....	18
Pulley Assembly Cylinder Bill of Materials .....	19
Brace Assembly .....	20
Brace Assembly Bill of Materials .....	21
Cylinder Assembly .....	22
Cylinder Assembly Bill of Materials .....	23
Power Pack Complete Assembly .....	24
Power Pack Complete Assembly Bill of Materials .....	25
Motor and Tank Assembly .....	26
Motor and Tank Assembly Bill of Materials .....	27
Covers Assembly .....	28
Covers Assembly and Stickers Bill of Materials .....	29
Accessories .....	30
Extension Pad EP10 .....	31
Foot Operated Arm Lock (Superseded) .....	32
Foot Operated Arm Lock (Superseded) Bill of Materials .....	33
Replacement Parts for EP02 Extension Pad (Superseded) .....	34
415VAC 3 Phase to 240VAC Single Phase Conversion .....	35

**MOLNAR**



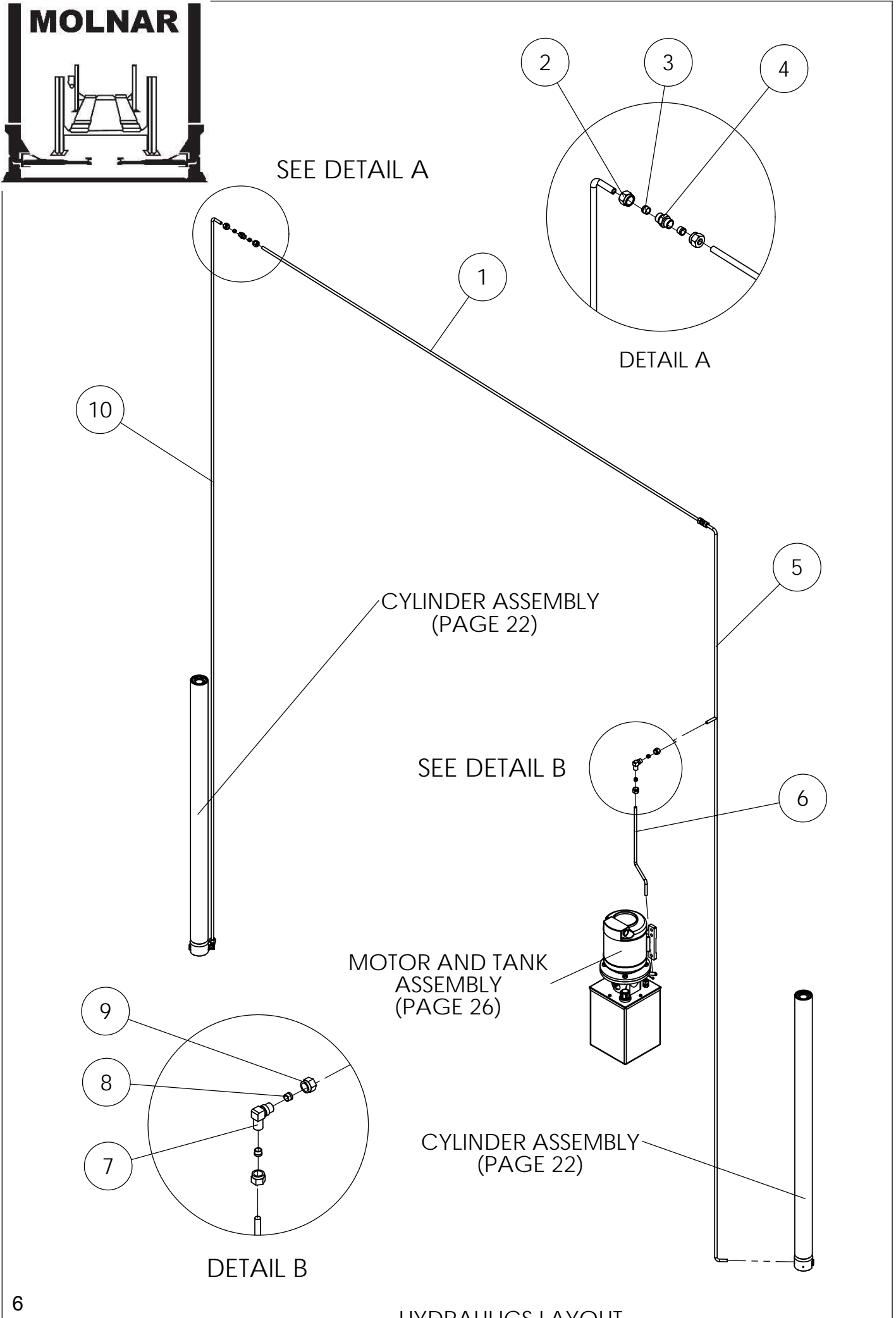
**TWO POST 4 TONNE CLEAR FLOOR HOIST  
MODEL 2P4T - PREMIUM SERIES 3**



**CABLES**

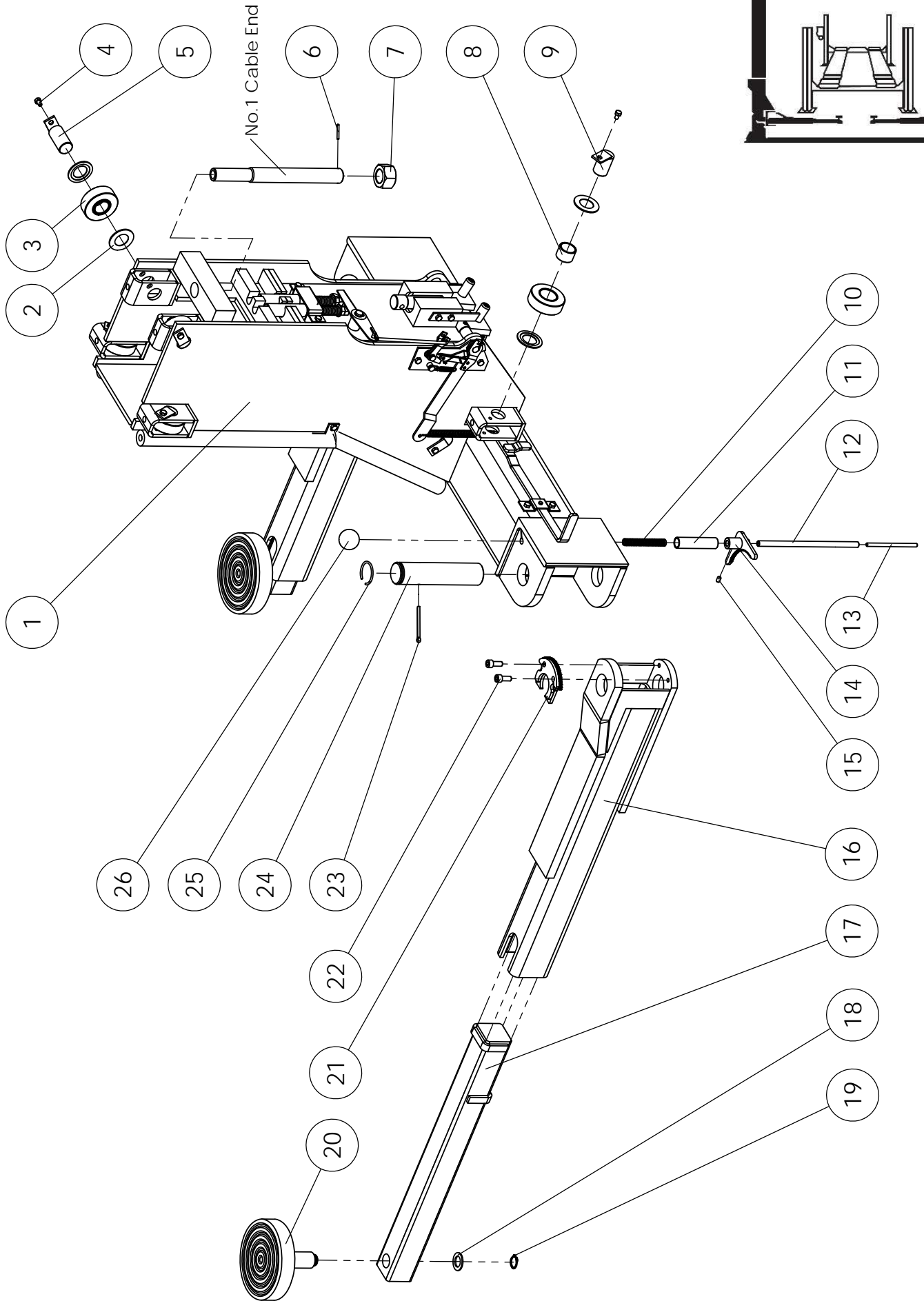
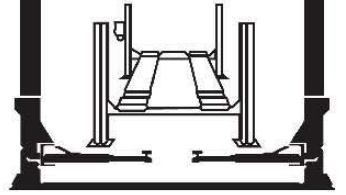
**MODEL 2P4T - PREMIUM SERIES 3**

ITEM #	PART DESCRIPTION	SPARE PART #
1	CABLE NO. 1 (BALANCE CABLE 10,182mm LONG) 2 CABLES PER HOIST	2P4T-D-274
2	CABLE NO. 2 (SHORT CABLE 2882mm LONG) 4 CABLES PER HOIST	85A-D-67A



### HYDRAULICS LAYOUT

ITEM #	PART DESCRIPTION	SPARE PART #
1	HYDRAULIC PIPE TOP BRACE	2P4T-E-223
2	NUT ADAPTOR HYDRAULIC MC6	85A-F-226
3	OLIVE 3/8"	85A-F-227
4	ADAPTOR HYDRAULIC STRAIGHT	85A-E-220
5	HYDRAULIC PIPE CONTROL POST	2P4T-E-224
6	HYDRAULIC PIPE MOTOR	2P4T-F-103
7	ADAPTOR HYDRAULIC ELBOW	85A-E-221
8	OLIVE 3/8"	85A-F-227
9	NUT ADAPTOR HYDRAULIC MC6	85A-F-226
10	HYDRAULIC PIPE NON CONTROL POST	2P4T-E-225

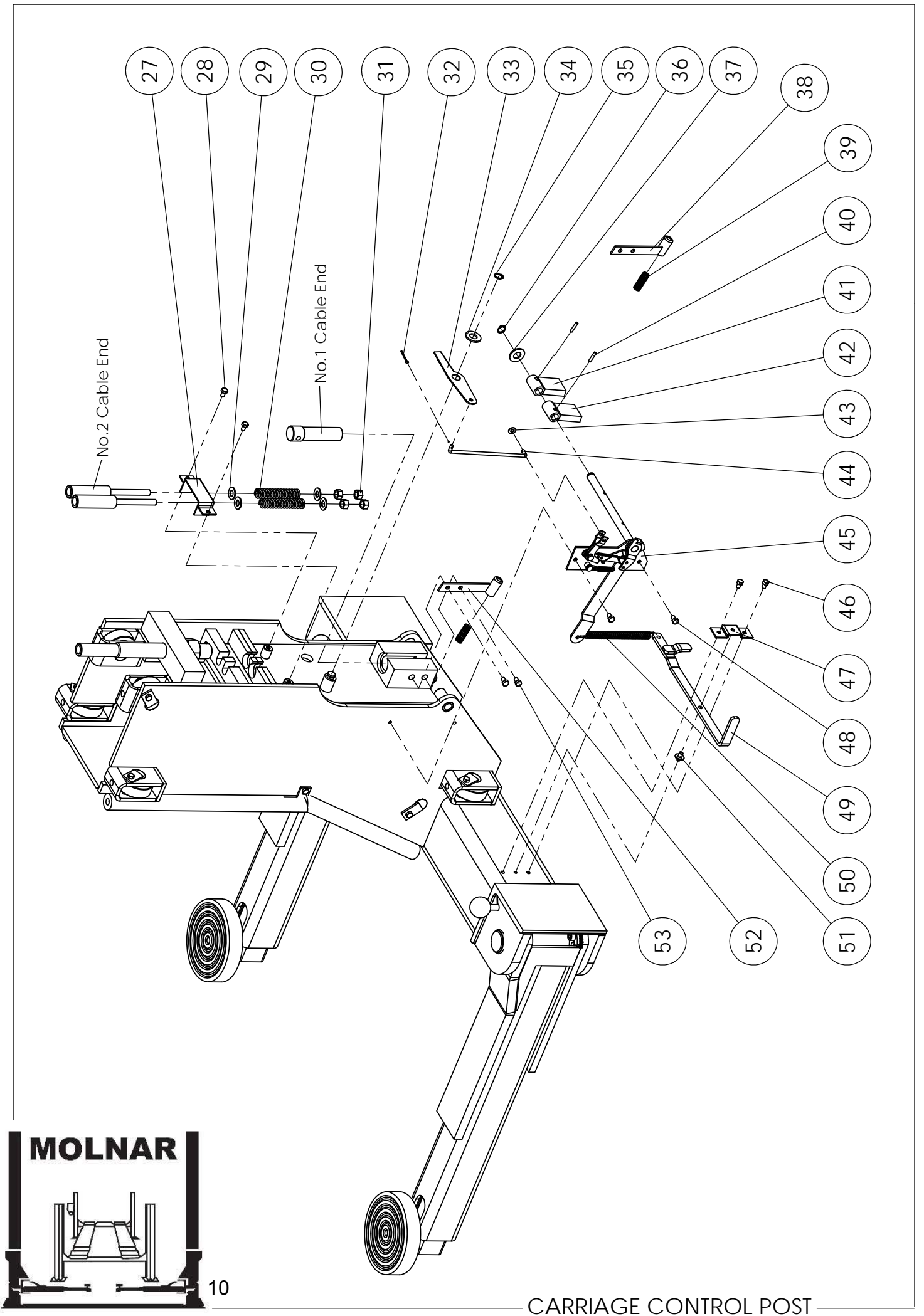




### CARRIAGE CONTROL POST

ITEM #	PART DESCRIPTION	SPARE PART #
1	CARRIAGE CONTROL POST	2P4T-KR-3
2	SPACER	85A-KL-217
3	ROLLER (INCL. BUSH)	85A-KL-216R
4	BOLT M6x10mm	85A-D-4
5	PIN ROLLER	85A-KL-22
6	ROLL PIN 1/8"x1"	85A-D-13RP
7	NUT LONG CABLE 1" WHITWORTH	85A-D-36
8	BUSH ROLLER	85A-KL-216B
9	PIN ROLLER SHORT	2P4T-KL-22
10	SPRING 25 COIL 12.7ODx1.4WD	4488-TB-53
11	SLEAVE SPRING HOUSING	2008025
12	SHAFT AUTO ARM LOCK	2008024
13	SHAFT AUTO ARM LOCK PLASTIC	2008032
14	BRACKET CARRIAGE LOCK	2008026
15	GRUB SCREW M6x8mm	1029001
16	LIFTING ARM CARRIAGE	2P4T-J-54
17	LIFTING ARM INNER	2P4T-J-53
18	WASHER (ZINC PLATED)	5017002
19	CIRCLIP 19mm (DIN 471 - 19)	JB87-10
20	PICK UP PAD (DIAMETER 140mm) SCREW IN	JJ3PUP
21	BRACKET LIFTING ARM LOCK	2008029
22	BOLT M8x20mm	1011002
23	SPLIT PIN M4x45mm (LIFTING ARM PIVOT SHAFT)	85A-J-251
24	PIN LIFTING ARM PIVOT	2P4T-J-50
25	SNAP RING ROUND 32mm I/D	85A-J-51
26	KNOB BLACK 3/8" BSW	4488-PP-126B
	AUTO ARM LOCKING KIT x4 (INCL. ITEMS # 10 SPRING (x4), # 11 SLEAVE SPRING HOUSING (x4), # 12 SHAFT AUTO ARM LOCK (x4), # 13 SHAFT AUTO ARM LOCK PLASTIC (x4), # 14 BRACKET CARRIAGE LOCK (x4), # 15 GRUB SCREW (x4), # 21 BRACKET LIFTING ARM LOCK (x4), # 22 BOLT (x8), # 26 KNOB (x4))	2008004

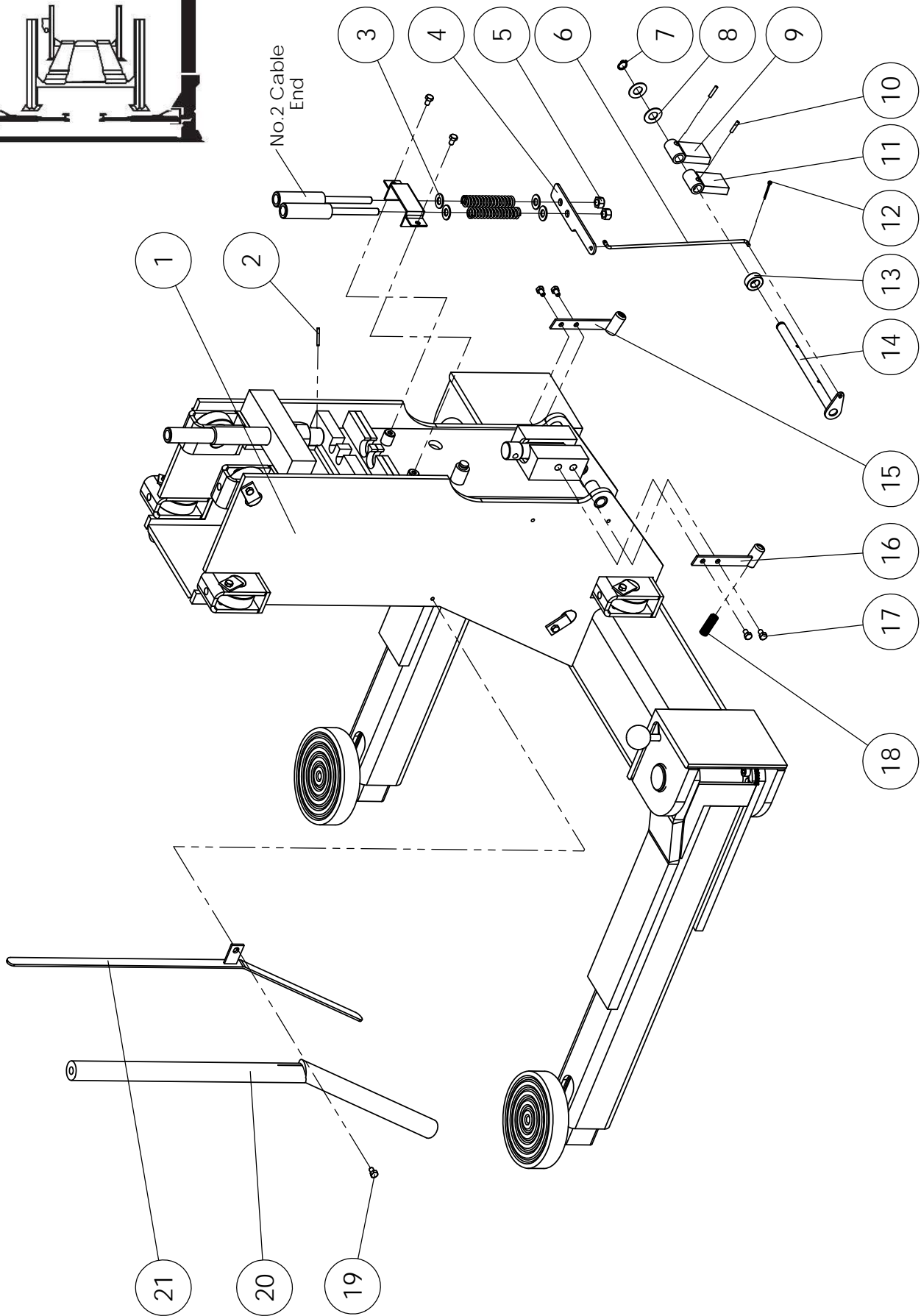
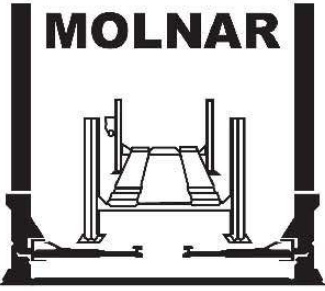
\* FOR SUPERSEDED FOOT OPERATED ARM LOCK SEE PAGE 32



CARRIAGE CONTROL POST

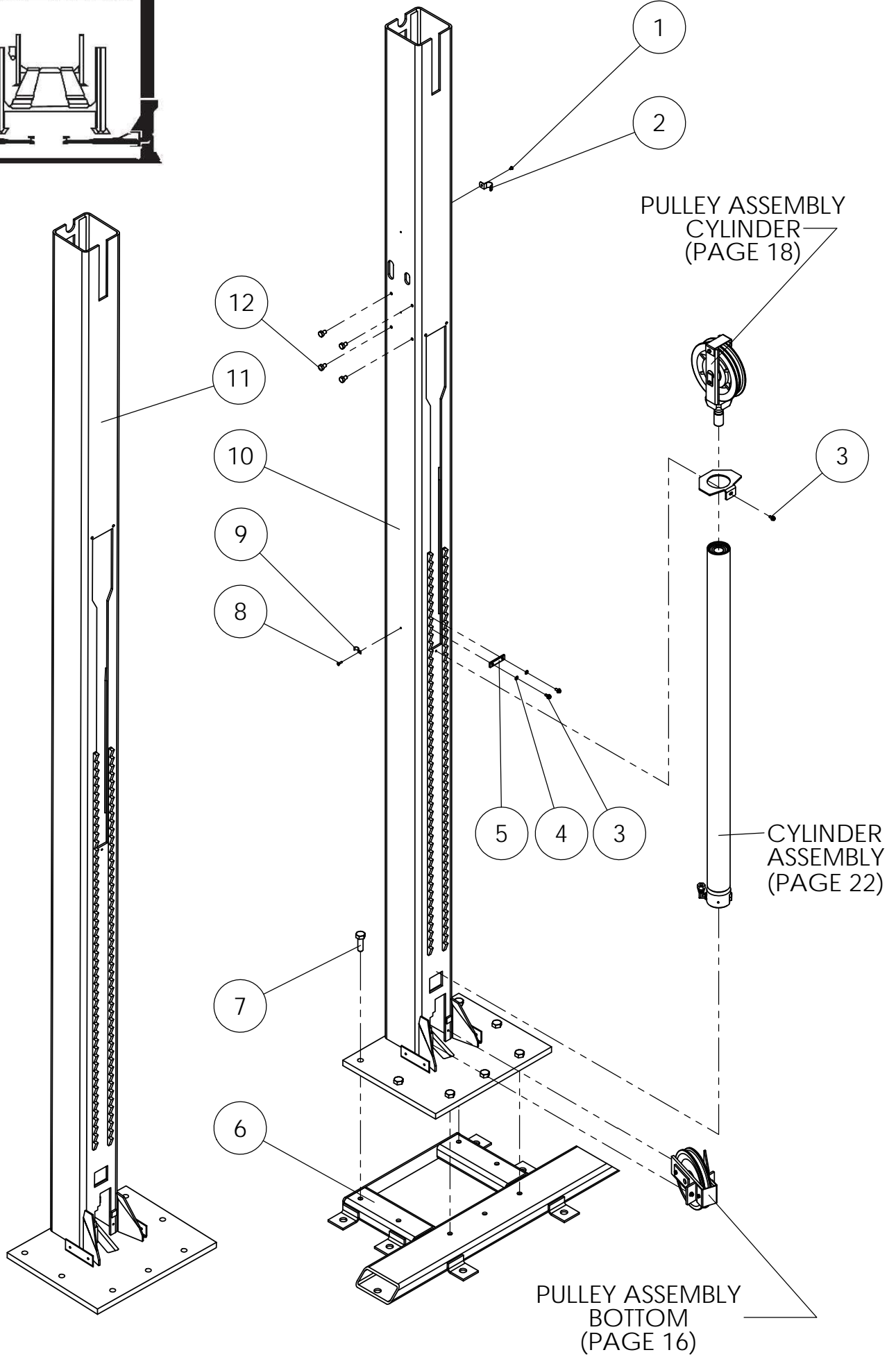
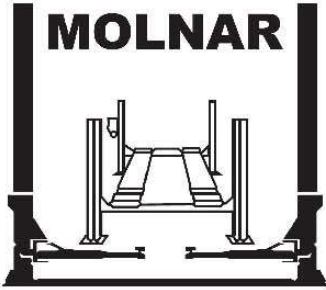
### CARRIAGE CONTROL POST

ITEM #	PART DESCRIPTION	SPARE PART #
27	BRACKET CABLE	85A-D-129
28	BOLT M6x12mm	85A-D-11
29	WASHER FLAT M10	85A-D-132
30	SPRING FOR SHORT CABLES	85A-D-131
31	NUT SHORT CABLE 3/8" WHITWORTH	85A-D-133
32	SPLIT PIN M2.5x12mm	85A-D-76
33	SAFETY PIVOT ARM	85A-KR-140
34	WASHER FLAT 1/2" ZC	85A-KR-128
35	CIRCLIP 12mm (DIN 471-12)	85A-J-56
36	CIRCLIP 12mm (DIN 471-12)	85A-J-56
37	WASHER FLAT 1/2" ZC	85A-KR-128
38	SPRING HOLDER RIGHT	85A-KR-135
39	SPRING SAFETY TOGGLE (2 PER CARRIAGE)	85A-KL-27
40	PIN SAFETY TOGGLE	85A-KR-127
41	TOGGLE SAFETY RH CONTROL	85A-KR-125
42	TOGGLE SAFETY LH CONTROL	85A-KR-126
43	WASHER FLAT M5	85A-L-141
44	LINKAGE TO SHORT CABLES	85A-L-142
45	SAFETY ACTUATING ASSEMBLY	85A-L-146
46	BOLT M6x12mm	85A-D-11
47	BRACKET SAFETY ON/OFF	85A-KR-150
48	BOLT M6x10mm	85A-D-4
49	ARM SAFETY ON/OFF	85A-KR-152
	SAFETY ON/OFF ARM ASSEMBLY (INCL. ITEMS # 46 BOLT (x2), # 47 BRACKET (x1), # 49 ARM (x1), # 51 PIN PIVOT (x1))	85A-KR-152A
50	SPRING SAFETY ACTUATING	85A-L-148S
51	PIN PIVOT SAFETY ON/OFF	85A-KR-250
52	SPRING HOLDER LEFT	85A-KR-136
53	BOLT M6x10mm	85A-KL-11



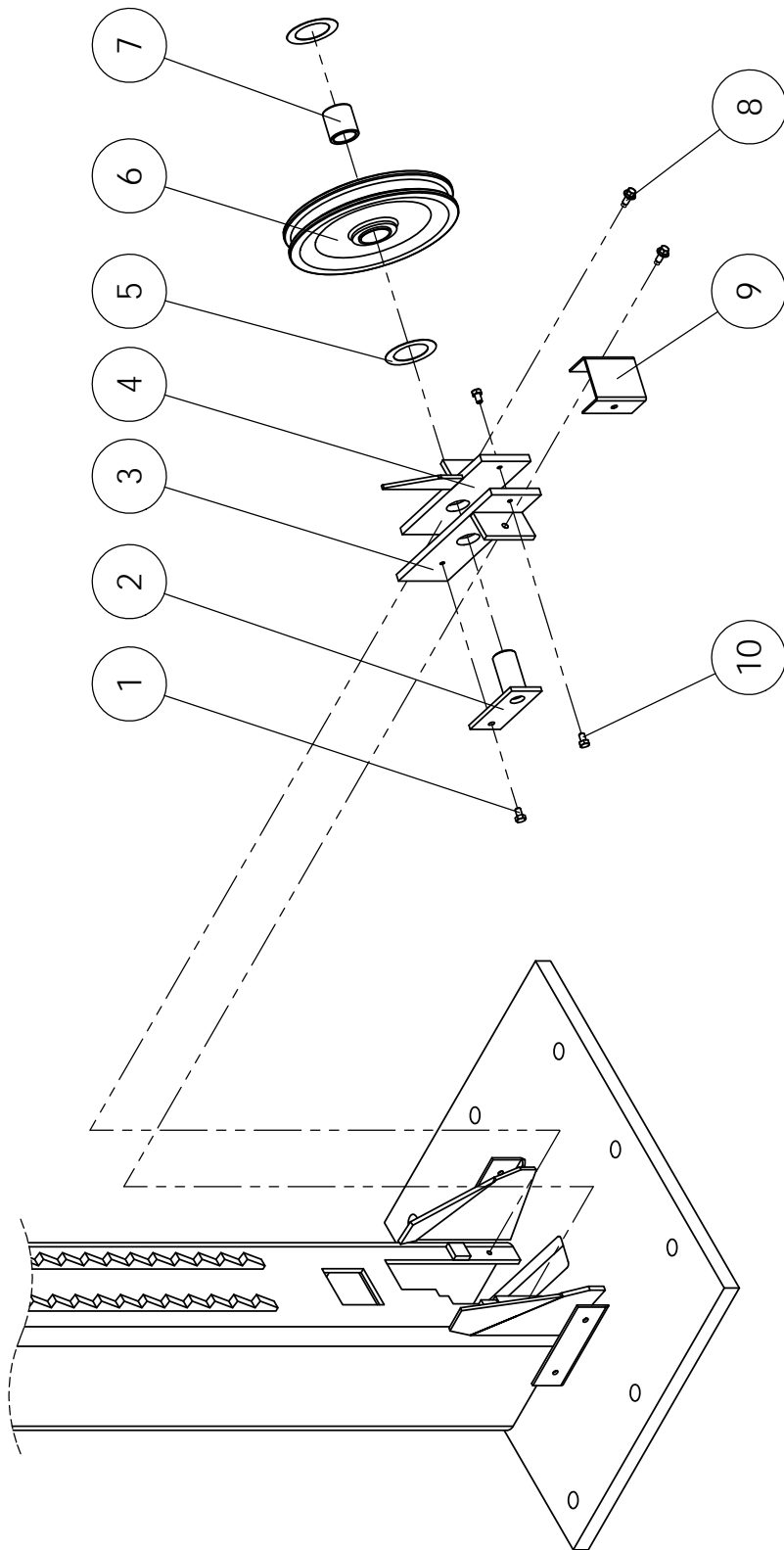
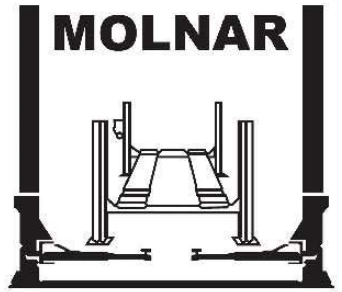
**CARRIAGE NON CONTROL POST**

ITEM #	PART DESCRIPTION	SPARE PART #
1	CARRIAGE - NON CONTROL POST	2P4T-KL-2
2	ROLL PIN 1/8"x1"	85A-D-13RP
3	WASHER FLAT M10	85A-D-132
4	SAFETY ACTUATING ARM	2P4T-L-100
5	NUT 3/8 WHITWORTH NYLOCK FROM SERIAL NUMBER 2P4T 1587	1114001
6	LINKAGE TO SHORT CABLES	2P4T-L-101
7	CIRCLIP 12mm (DIN 471-12)	85A-J-56
8	WASHER FLAT 1/2" ZC	85A-KR-128
9	TOGGLE SAFETY RH CONTROL	85A-KR-125
10	PIN SAFETY TOGGLE	85A-KR-127
11	TOGGLE SAFETY LH CONTROL	85A-KR-126
12	SPLIT PIN M2.5x12mm	85A-KR-144
13	SPACER	2P4T-L-102
14	SAFETY AXLE LEFT HAND	2P4T-L-103
15	SPRING HOLDER RIGHT	85A-KR-135
16	SPRING HOLDER LEFT	85A-KR-136
17	BOLT M6x10mm	85A-KL-23
18	SPRING SAFETY TOGGLE (2 PER CARRIAGE)	85A-KL-27
19	BOLT M6x10mm	85A-D-4
20	RUBBERS DOOR PROTECTORS (4 PER SET)	2P4T-KK-225R
21	BRACKET DOOR PROTECTORS (4 PER SET)	2P4T-KK-225B
	DOOR PROTECTORS (INCL. BRACKETS & RUBBERS - 4 PER SET)	2P4T-KK-225



### POST ASSEMBLIES

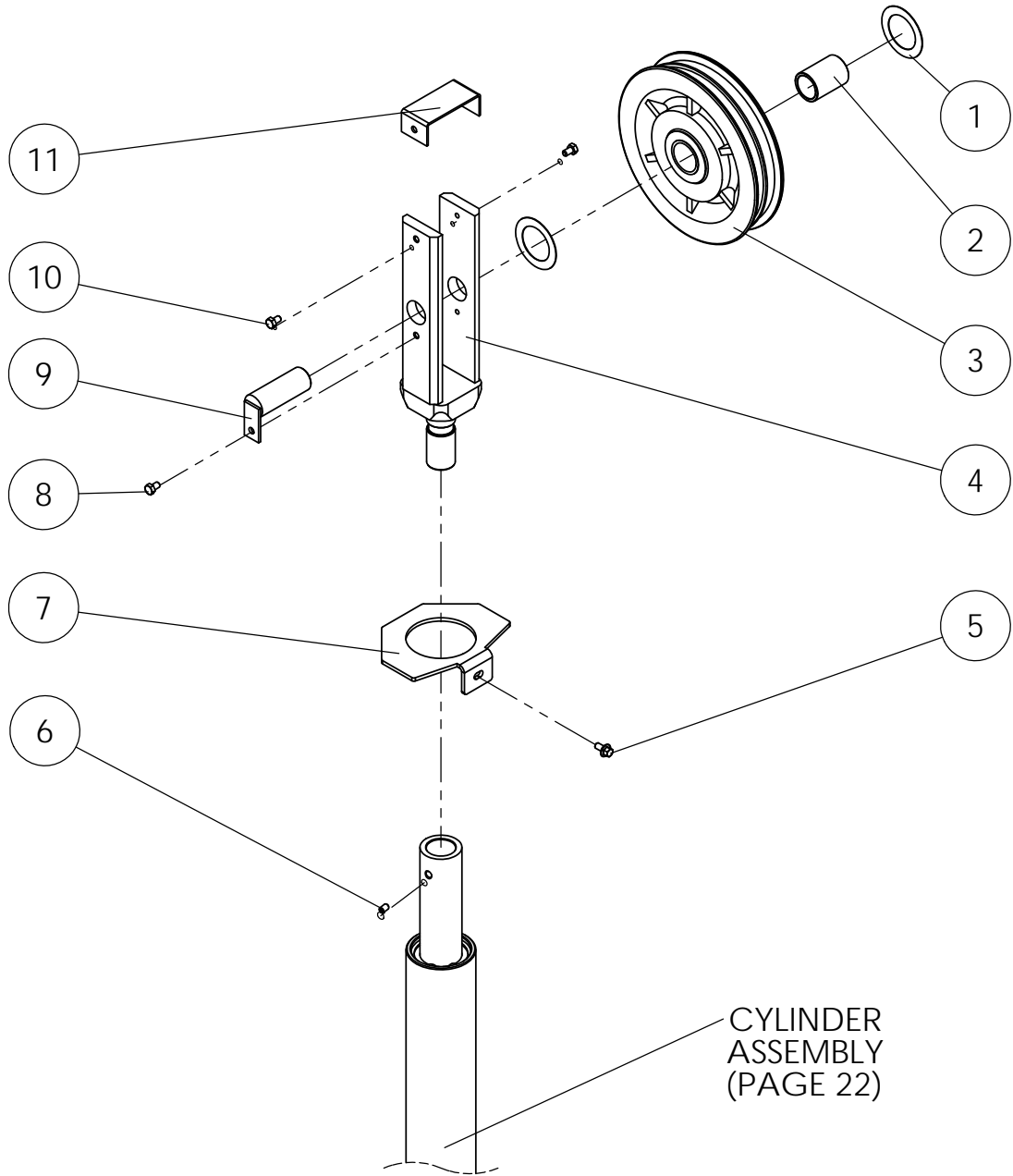
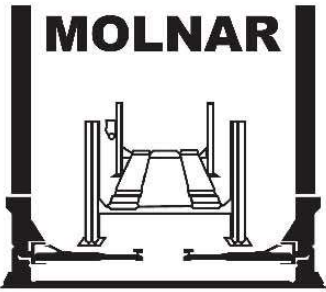
ITEM #	PART DESCRIPTION	SPARE PART #
1	SCREW M5x6mm	85A-H-156
2	SADDLE CONDUIT	85A-H-155
3	BOLT M6x12mm	85A-D-11
4	WASHER INTERNAL LOCK M6	4488-C-76
5	BRACKET CABLE RETAINING	85A-E-116
6	BASE PLATE	2P4T-001
7	BOLT M16x40mm	85A-B-16
8	SCREW 8G X 5/8" COUNTERSUNK	85A-E-118
9	SADDLE HYDRAULIC PIPE	85A-E-117
10	POST CONTROL	2P4T-B-252
11	POST NON CONTROL	2P4T-C-253
12	BOLT M10X15 HHD	85A-KL-44





**PULLEY ASSEMBLY BOTTOM**

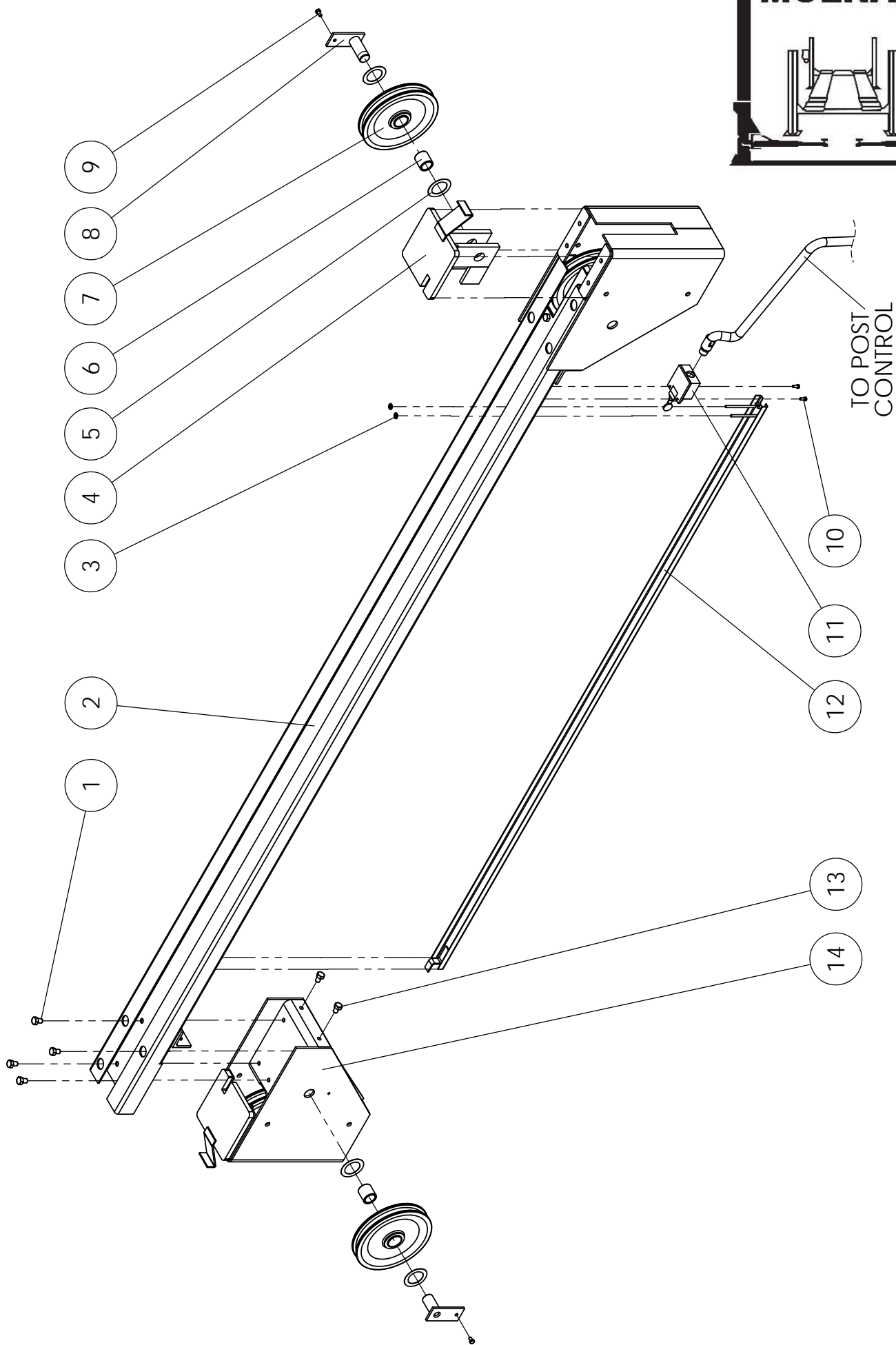
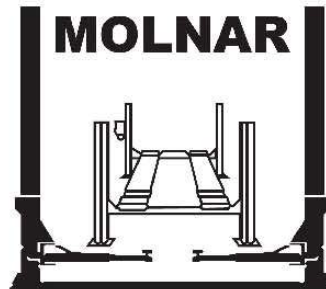
ITEM #	PART DESCRIPTION	SPARE PART #
1	BOLT M6x12mm	85A-D-11
2	PIN BOTTOM PULLEY	85A-D-10
3	BRACKET BOTTOM PULLEY LEFT	OH93-D-267
4	BRACKET BOTTOM PULLEY RIGHT	OH93-D-266
5	WASHER SPACER 1 1/2"x2 1/4"x22G	85A-D-64
6	PULLEY SINGLE GROOVE (INCLUDES BUSH)	85A-D-9
	PULLEY SINGLE GROOVE ASSEMBLY (INCL. ITEMS # 2 PIN (x1), # 5 WASHER SPACER (x2), # 6 PULLEY (x1), # 7 BUSH (x1))	85A-D-9A
7	BUSH SINGLE GROOVE PULLEY	85A-D-12
8	BOLT M6x16mm	85A-D-6
9	CAP BOTTOM PULLEY	85A-D-5
10	BOLT M6x10mm	85A-D-4



CYLINDER  
ASSEMBLY  
(PAGE 22)

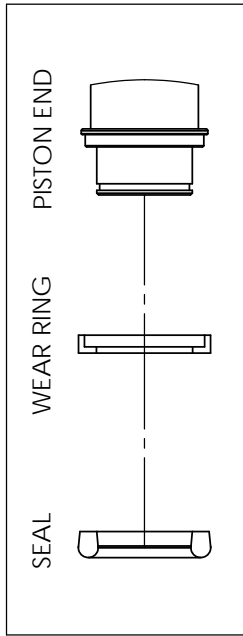
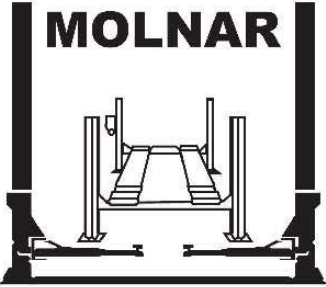
**PULLEY ASSEMBLY CYLINDER**

ITEM #	PART DESCRIPTION	SPARE PART #
1	WASHER SPACER 1 1/2"x2 1/4"x22G	85A-D-64
2	BUSH TWIN GROOVE PULLEY	85A-D-65
3	PULLEY TWIN GROOVE (INCLUDES BUSH)	85A-D-66
	PULLEY TWIN GROOVE ASSEMBLY (INCL. ITEMS # 1 WASHER SPACER (x2), # 2 BUSH (x1), # 3 PULLEY TWIN GROOVE (x1), # 9 PIN (x1))	85A-D-66A
4	FORK (INCL. ITEM # 6 SET SCREW) FROM SERIAL NUMBER 2P4T 1569	2P4T-D-69
	FORK ASSEMBLY (INCL. ITEMS # 1 WASHER SPACER (x2), # 2 BUSH (x1), # 3 PULLEY TWIN GROOVE (x1), # 4 FORK (x1), # 8 BOLT (x1), # 9 PIN (x1), # 10 BOLT (x2), # 11 CAP (x1))	2P4T-D-69A
5	BOLT M6x12mm	85A-D-11
6	SET SCREW M8x8mm	85A-E-224
7	BRACKET CYLINDER SUPPORT RING	2P4T-EE-275
8	BOLT M6x12mm	85A-D-11
9	PIN TWIN GROOVE PULLEY	85A-D-72
10	BOLT M6x10mm	85A-D-4
11	CAP CYLINDER PULLEY	85A-D-63

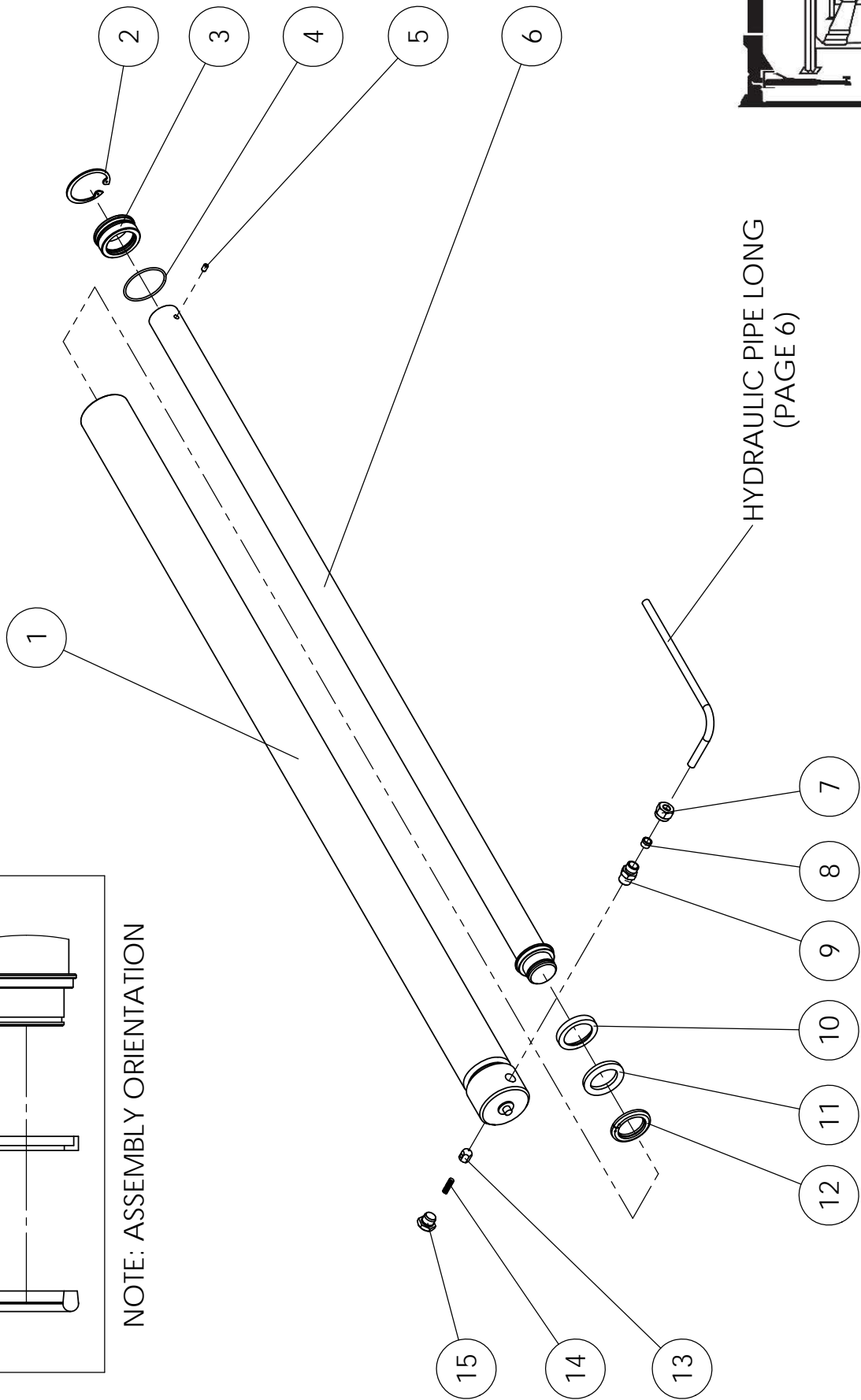


**BRACE ASSEMBLY**

ITEM #	PART DESCRIPTION	SPARE PART #
1	BOLT M10X15 HHD	85A-KL-44
2	BRACE STANDARD (2650mm)	OH93-G-258
3	SPEED CLIP M5	85A-F-200
4	BRACKET TOP PLATE	2P4T-B-257
5	WASHER SPACER 1 1/2"x2 1/4"x22G	85A-D-64
6	BUSH SINGLE GROOVE PULLEY	85A-D-12
7	PULLEY SINGLE GROOVE (INCLUDES BUSH)	85A-D-9
	PULLEY SINGLE GROOVE ASSEMBLY (INCL. ITEMS # 5 WASHER SPACER (x2), # 6 BUSH (x1), # 7 PULLEY SINGLE GROOVE (x1), # 8 PIN (x1))	85A-D-9A
8	PIN TOP PULLEY NON CONTROL POST	85A-D-38
9	BOLT M6x12mm	85A-D-11
10	BOLT M5x10mm	85A-H-95
11	LIMIT SWITCH	2P4T-G-261
12	LIMIT SWITCH ACTIVATING BAR (1835mm)	OH93-G-262
13	BOLT M10X15 HHD	85A-KL-44
14	CAP POST PULLEY HOUSING	2P4T-B-260



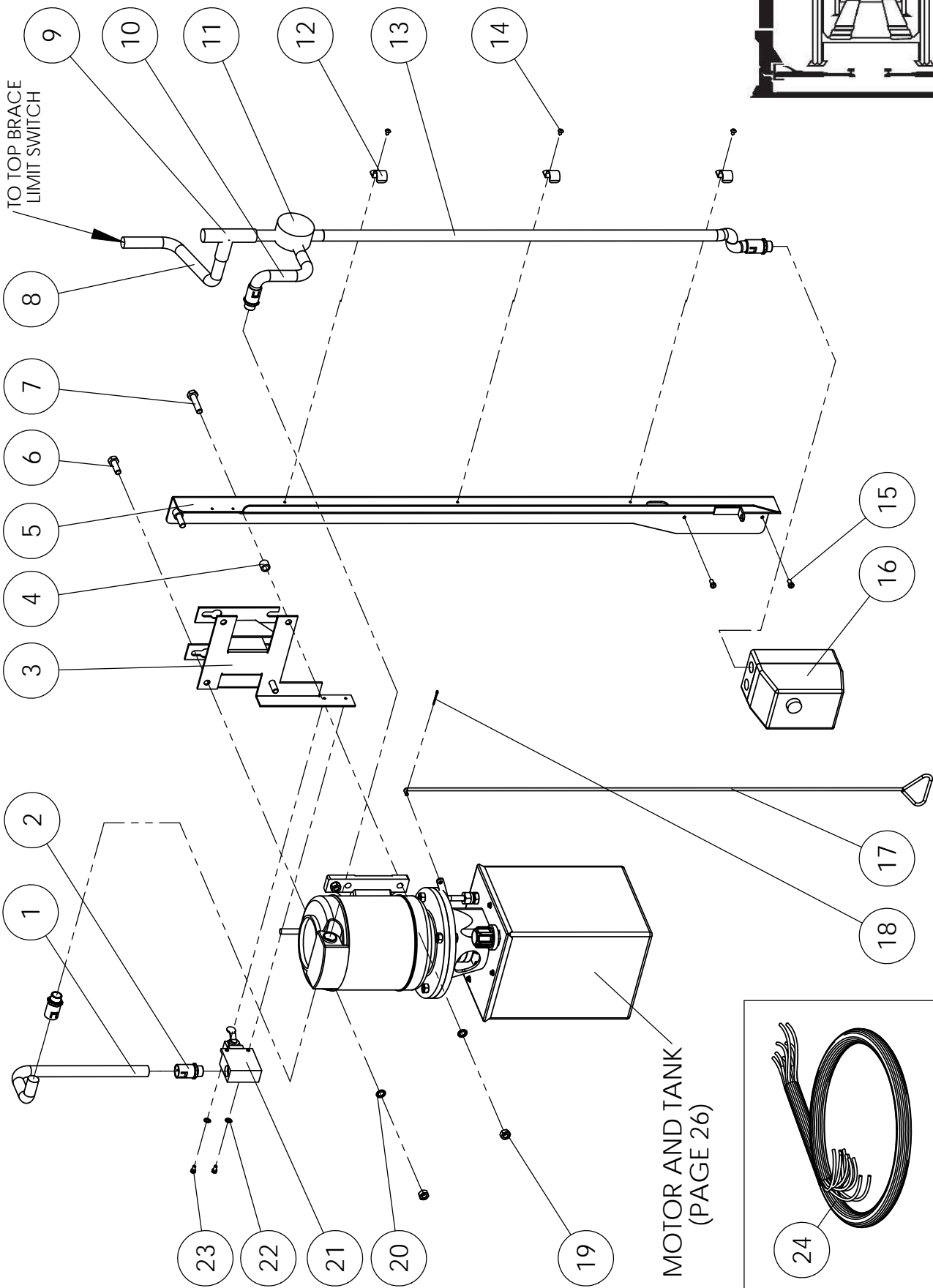
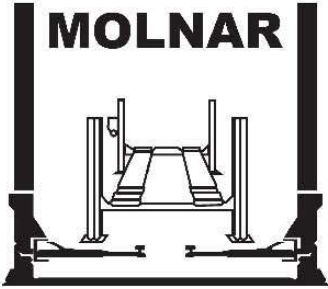
NOTE: ASSEMBLY ORIENTATION



HYDRAULIC PIPE LONG  
(PAGE 6)

### CYLINDER ASSEMBLY

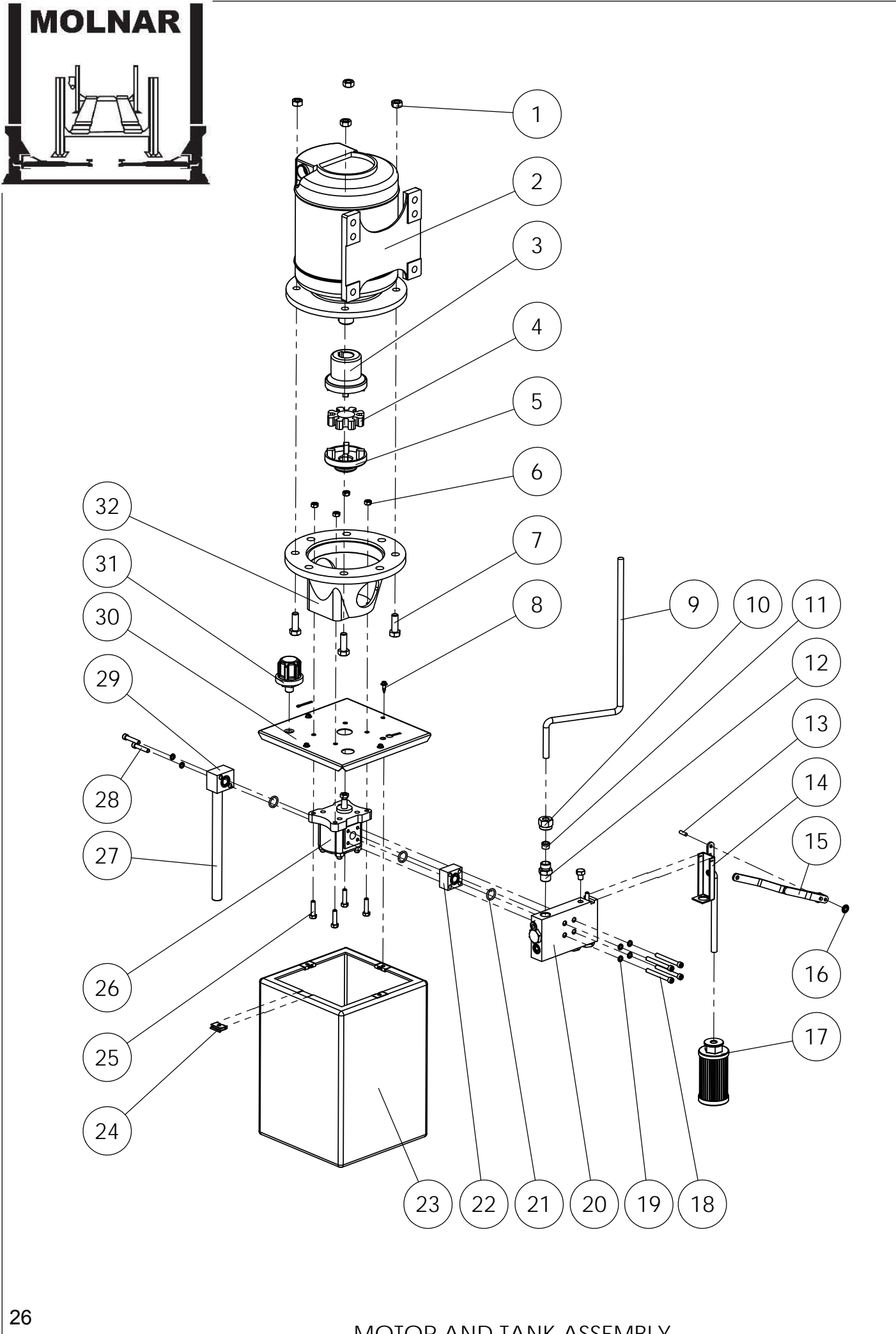
ITEM #	PART DESCRIPTION	SPARE PART #
1	CYLINDER BARREL	2P4T-E-108
	HYDRAULIC CYLINDER ASSEMBLY INCLUDES ALL ITEMS EXCEPT HYDRAULIC PIPE	2P4T-E-108A
2	CIRCLIP 60mm (DIN 472-060)	4488-C-105
3	GUIDE BUSH 42mm ID	4488-C-106
4	O RING 60mm	4488-C-106A
5	SET SCREW M8x8mm	85A-E-224
6	PISTON ROD ASSEMBLY	2P4T-E-104
7	NUT ADAPTOR HYDRAULIC MC6	85A-F-226
8	OLIVE 3/8"	85A-F-227
9	ADAPTOR HYDRAULIC STRAIGHT	85A-E-220
10	WEAR RING	4488-C-109
11	SEAL 58mm OD	4488-C-110
	CYLINDER SEAL KIT (INCLUDES ITEMS # 3 GUIDE BUSH (x1), # 4 O RING (x1), # 10 WEAR RING (x1), # 11 SEAL (x1), # 12 RETAINER (x1))	2P4T-EE-1S
12	RETAINER	4488-C-111
13	THROTTLE VALVE	85A-E-115
14	SPRING THROTTLE VALVE	85A-E-114
15	BOLT THROTTLE VALVE	85A-E-113





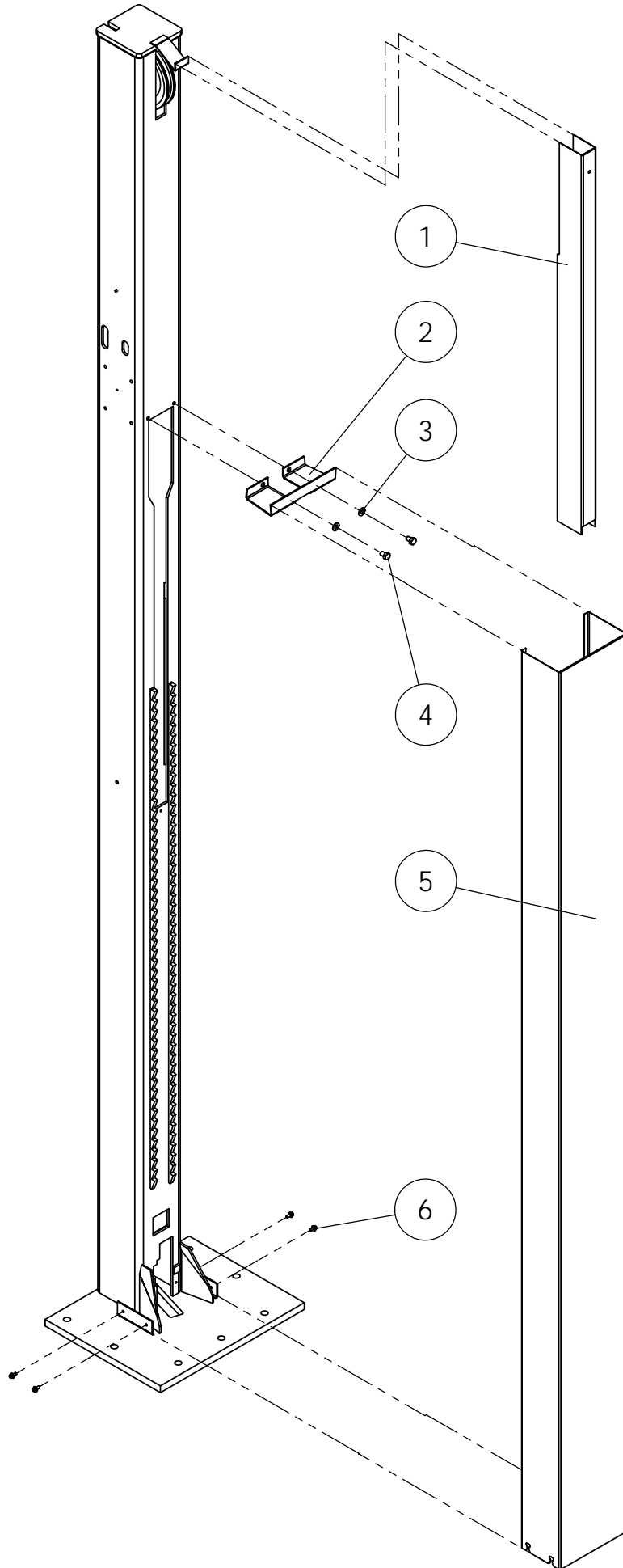
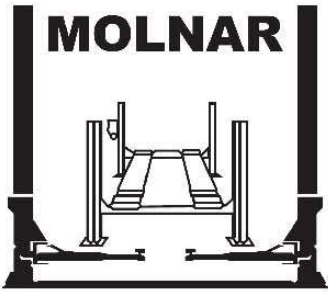
**POWER PACK COMPLETE ASSEMBLY**

ITEM #	PART DESCRIPTION	SPARE PART #
1	CONDUIT M20	2P4T-PP-101
2	CONDUIT ADAPTOR STRAIGHT M20	4488-PP-303
3	BRACKET MOTOR MOUNTING	2P4T-C-276
4	SPACER	85A-H-88
5	BRACKET STARTER	2P4T-C-277
6	BOLT M10X25mm	85A-H-89
7	BOLT M10x45mm	85A-H-86
8	CONDUIT M20	2P4T-PP-102
9	CONDUIT T-PIECE M20	2P4T-PP-103
10	CONDUIT M20	2P4T-PP-104
11	CONDUIT JUNCTION	85A-H-153
12	SADDLE CONDUIT	85A-H-155
13	CONDUIT M20	2P4T-PP-105
14	SCREW M5x6mm	85A-H-156
15	BOLT M5x10mm	85A-H-95
16	STARTER BOX-TP (415V 3 PHASE)	85A-H-157
	STARTER BOX-SP (240V SINGLE PHASE)	85A-H-157SP
17	HANDLE LOWERING	2P4T-F-197
18	SPLIT PIN M2.5x12mm	85A-KL-33
19	NUT M10	85A-H-87
20	WASHER INTERNAL LOCK M10	85A-D-134
21	LIMIT SWITCH	85A-H-94
22	WASHER INTERNAL LOCK M5	85A-H-96
23	BOLT M5x10mm	85A-H-95
24	WIRING LOOM WITH SADDLES AND GLANDS (415V 3 PHASE)	2P4T-HH-LOOM
	WIRING LOOM WITH SADDLES AND GLANDS (240V SINGLE PHASE)	2P4T-HH-LOOMSP



### MOTOR AND TANK ASSEMBLY







ITEM #	PART DESCRIPTION	SPARE PART #
1	NUT M10	85A-F-396
2	MOTOR 415V 3 PHASE (INCLUDES COUPLING)	85A-F-101TP
	MOTOR 240V SINGLE PHASE (INCLUDES COUPLING)	85A-F-101SP
3	COUPLING MOTOR	85A-F-96
4	COUPLING RUBBER	85A-F-97
5	COUPLING PUMP	85A-F-100
6	NUT 1/4" ZINC	85A-F-274
7	BOLT M10x35mm	85A-F-169
8	SCREW TANK/LID 8Gx15mm	85A-F-161
9	HYDRAULIC PIPE MOTOR	2P4T-F-103
10	NUT ADAPTOR HYDRAULIC MC6	85A-F-226
11	OLIVE 3/8"	85A-F-227
12	ADAPTOR HYDRAULIC STRAIGHT MC6-6T	85A-F-220
13	PIN PIVOT	85A-F-202
14	BRACKET CONTROL VALVE	85A-F-175
15	RELEASE LEVER	85A-F-201
16	SPEED CLIP M5	85A-F-200
17	FILTER	85A-F-280
18	BOLT M6x55mm	85A-F-174
19	WASHER SPRING 1/4"x1/16"x1/16"	4488-PP-146
20	CONTROL VALVE ASSEMBLY	2P4T-F-208A
	CONTROL VALVE ASSEMBLY (RECONDITIONED)	2P4T-F-208A-REC
21	O RING 12mm	85A-F-170
22	ADAPTOR PUMP/VALVE	85A-F-171
23	TANK (EMPTY NO OIL)	2P4T-F-163
	TANK HYDRAULIC ASSEMBLY	2P4T-F-163A
	OIL CASTROL AWH 46 (8 LITRES) 8 LITRES PER 4 TONNE HOIST	OIL/H-8L
24	SPEED NUT	4488-PP-305
25	BOLT 1/4"x1" (ZINC)	85A-F-273
26	HYDRAULIC PUMP	85A-F-167
27	TUBE PICK UP	2P4T-PP-151
28	BOLT M6x35mm	85A-F-164
29	ADAPTOR PUMP/PICK UP	85A-F-165
30	TANK LID	85A-F-162
31	BREATHER	85A-F-158
32	BELL HOUSING	85A-F-168
	POWER PACK ASSEMBLY (415V 3 PHASE)	2P4T-FF-1
	POWER PACK ASSEMBLY (240V SINGLE PHASE)	2P4T-FF-1-240V

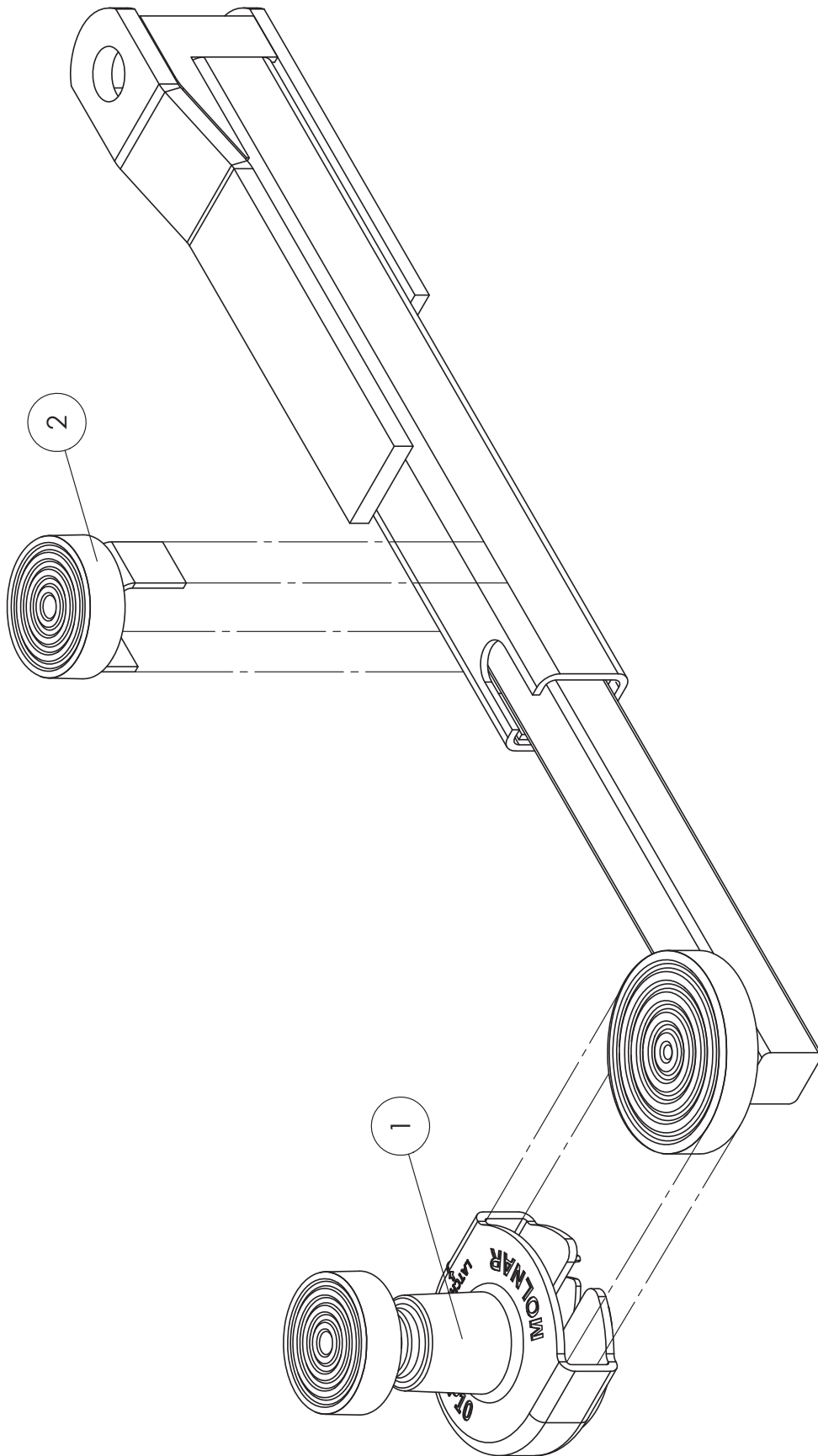
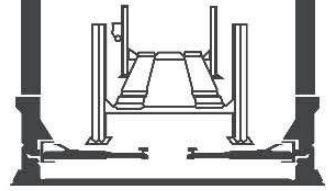


### COVERS ASSEMBLY

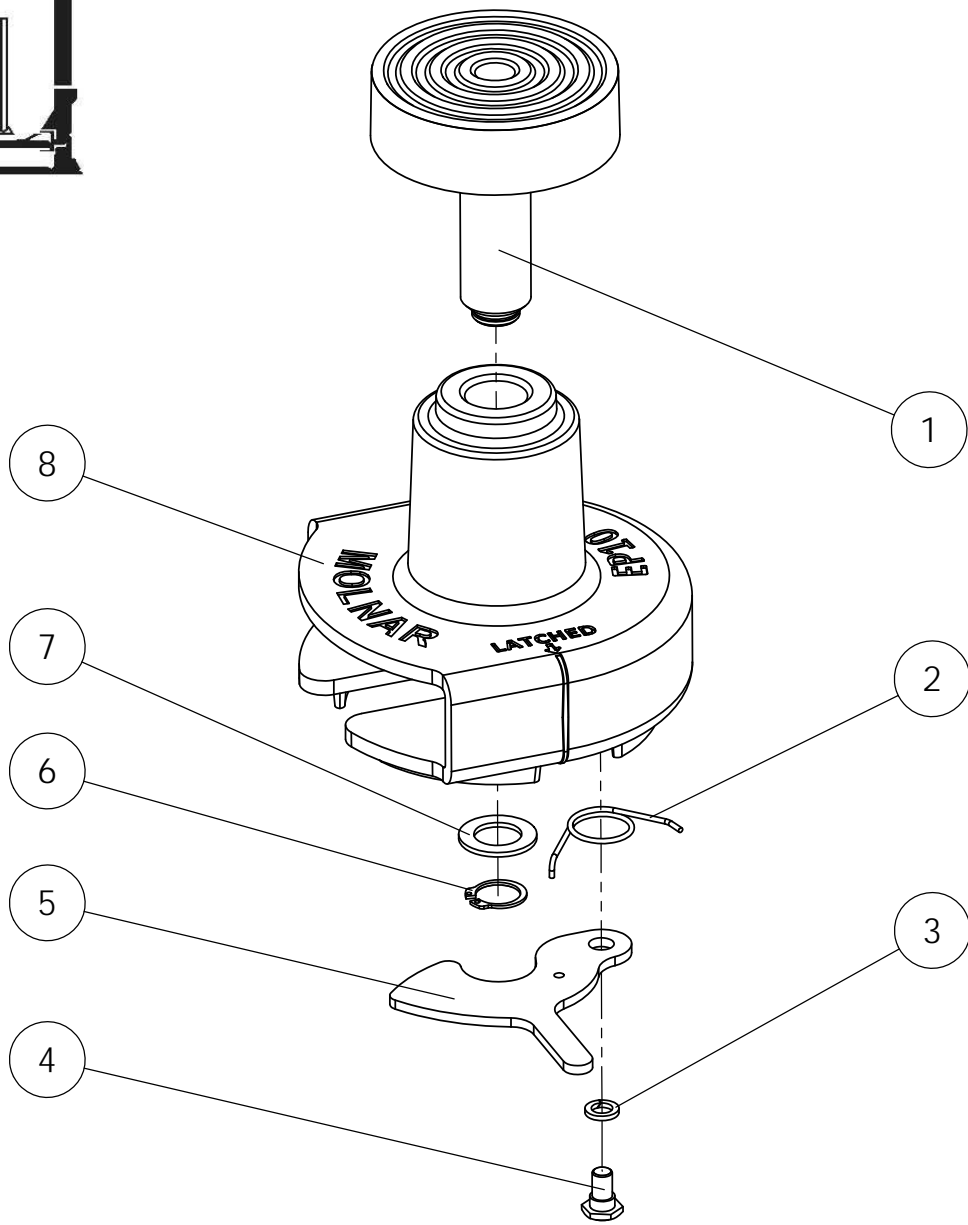
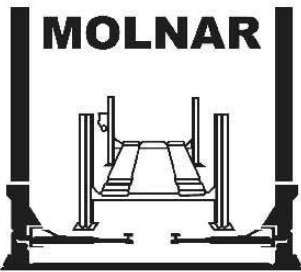
ITEM #	PART DESCRIPTION	SPARE PART #
1	COVER CABLE	2P4T-D-272
2	BRACKET COVER MOUNTING	2P4T-B-151
3	WASHER FLAT M10	85A-D-132
4	BOLT M10x12mm	85A-C-41
5	COVER (ONE SIDE)	85A-B-14/1
	COVER SET (BOTH SIDES)	85A-B-14
6	BOLT M6x12mm	85A-D-11

### STICKERS

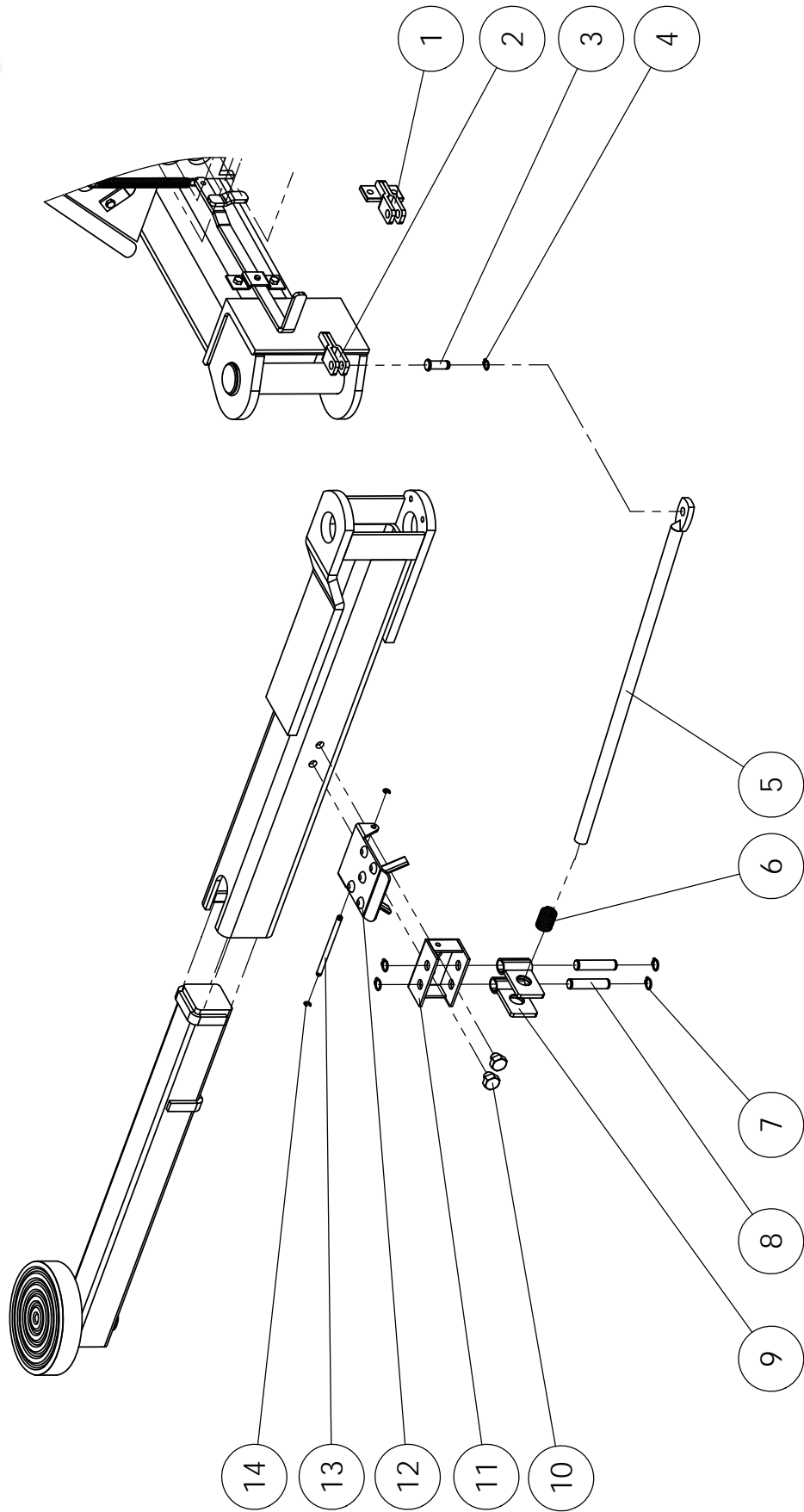
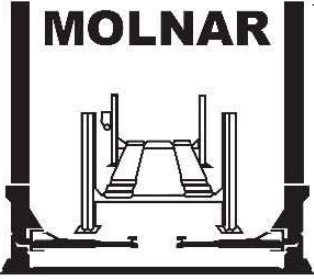
ITEM #	DESCRIPTION	SPARE PART #
1		STICKERS
2		STICKERS-H-THIN
3		2P4TDECAL
4		ON/OFF
5		2P4TMANUAL
6	 2P4T PREMIUM HOISTS REQUIRE 8 LITRES OF OIL	OIL/H-8L



ITEM #	PART DESCRIPTION	SPARE PART #
1	EXTENSION PAD	EP10
2	STABILIZER PAD	J3AB



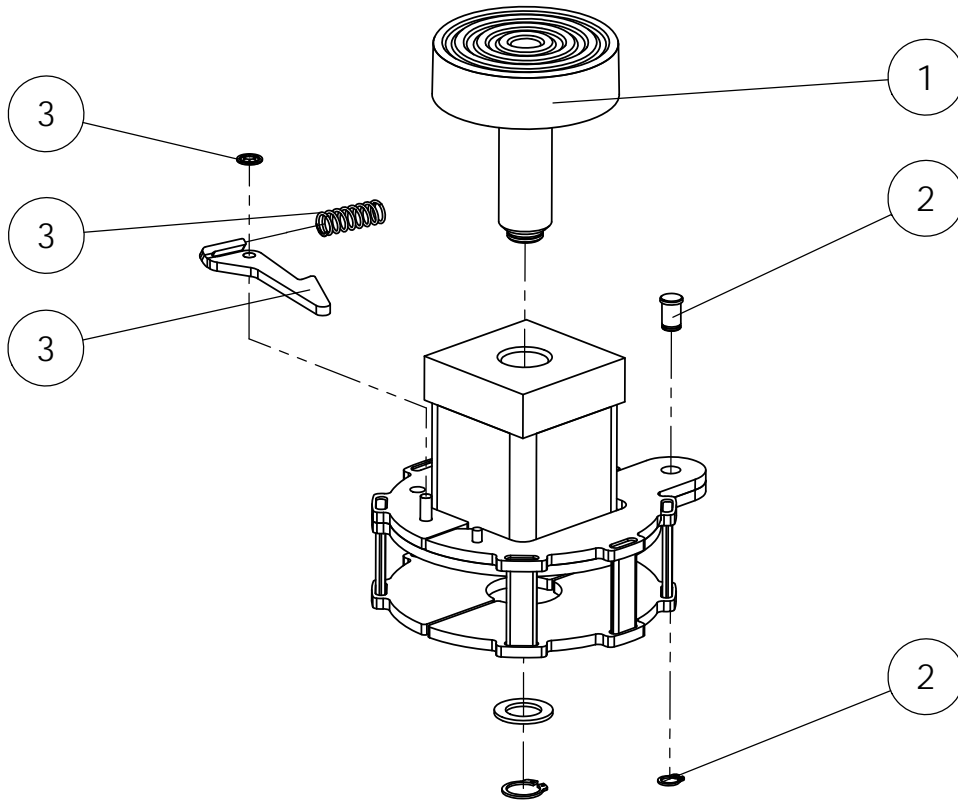
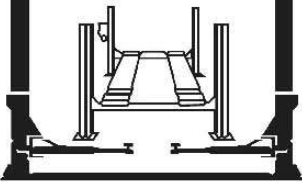
ITEM #	PART DESCRIPTION	SPARE PART #
1	PICK UP PAD (DIAMETER 100mm) SCREW IN	J3PUP
2	SPRING LATCH	5030001
3	WASHER SPRING M8	5017001
4	BOLT SHOULDER M8	5011001
5	LEVER LATCH	5006001
6	CIRCLIP 19mm (DIN 471-19)	JB87-10
7	WASHER (ZINC PLATED)	5017002
8	EP10 BODY	5013001
	LATCH ASSEMBLY EP10 (INCL. ITEMS # 2 SPRING (x1), # 3 WASHER (x1), # 4 BOLT (x1), # 5 LEVER (x1))	5026001





**FOOT OPERATED ARM LOCK (SUPERSEDED)**

ITEM #	PART DESCRIPTION	SPARE PART #
1	BRACKET PIVOT ARM (BOLT ON)	85A-J-48B
2	BRACKET PIVOT ARM (WELD ON)	85A-J-48W
3	PIN PIVOT LOCKING ARM ROD	85A-J-49
4	CIRCLIP 10mm (DIN 471-10)	85A-J-46
5	ROD LOCKING ARM	85A-J-61
6	SPRING	85A-J-59
7	CIRCLIP 12mm (DIN 471-12)	85A-J-56
8	PIN LOCKING PLATE PIVOT	85A-J-55
9	LOCKING PLATE	85A-J-58
10	BOLT 7/16" UNF X 3/8"	85A-J-60
11	BRACKET LOCKING ARM	85A-J-57
12	FOOT PEDAL	85A-J-354
13	PIN FOOT PEDAL	85A-J-356
14	E CLIP 4mm	85A-J-355
	ARM LOCKING KIT x4 (INCL. ITEMS # 2 BRACKET PIVOT (WELD ON) (x4), # 3 PIN PIVOT LOCKING ARM ROD (x4), # 4 CIRCLIP 10mm (x4), # 5 ROD LOCKING ARM (x4), # 6 SPRING (x4), # 7 CIRCLIP 12mm (x4), # 8 PIN LOCKING PLATE PIVOT (x8), # 9 LOCKING PLATE (x8), #10 BOLT (x8), # 11 BRACKET LOCKING ARM (x4))	85A-J-8550
	ARM LOCKING KIT x1 (INCL. ITEMS # 2 BRACKET PIVOT (WELD ON) (x1), # 3 PIN PIVOT LOCKING ARM ROD (x1), # 4 CIRCLIP 10mm (x1), # 5 ROD LOCKING ARM (x1), # 6 SPRING (x1), # 7 CIRCLIP 12mm (x1), # 8 PIN LOCKING PLATE PIVOT (x2), # 9 LOCKING PLATE (x2), #10 BOLT (x2), # 11 BRACKET LOCKING ARM (x1))	85A-J-85501/4
	ARM LOCKING KIT FOOT OPERATED x4 (INCL. ALL PARTS LISTED ABOVE PLUS ITEMS # 12 FOOT PEDAL (x4), # 13 PIN FOOT PEDAL (x4), # 14 E CLIP 4mm (x8))	85A-J-85357
	ARM LOCKING KIT FOOT OPERATED x1 (INCL. ALL PARTS LISTED ABOVE PLUS ITEMS # 12 FOOT PEDAL (x1), # 13 PIN FOOT PEDAL (x1), # 14 E CLIP 4mm (x2))	85A-J-853571/4



ITEM #	PART DESCRIPTION	SPARE PART #
1	PICK UP PAD (DIAMETER 100mm) SCREW IN	J3PUP
2	EP02 LATCH PIN ASSEMBLY INCLUDES PIVOT PIN AND CIRCLIP 10mm	EP02-L/P
3	EP02 LATCH ASSEMBLY INCLUDES LATCH, SPRING AND SPEED CLIP	EP02-L/A

## 415 VAC 3 PHASE to 240 VAC SINGLE PHASE CONVERSION

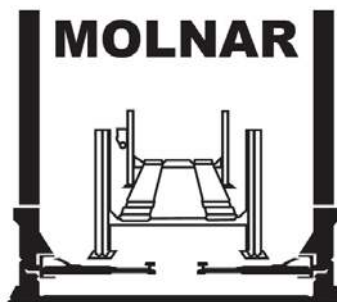
MOTOR 240V SINGLE PHASE (INCLUDES COUPLING). PART NO. 85A-F-101SP

USE EXISTING MOTOR MOUNT BOLTS

MOLNAR ENGINEERING STRONGLY ADVISES CONSULTING A QUALIFIED ELECTRICIAN BEFORE COMMENCING CONVERSION

### ELECTRICIAN

- HOIST MUST BE WIRED BY A QUALIFIED ELECTRICIAN ACCORDING TO AS3000 OR SUPPLY AUTHORITY REGULATIONS
- MINIMUM SUPPLY CIRCUIT RATING REQUIRED 20 AMP
- MODIFY WIRING ON HOIST TO SUIT SINGLE PHASE (PART NO. 2P4T-HH-LOOMSP)
- EXCHANGE 415VAC CONTACTOR TO A 240VAC CONTACTOR INSIDE THE STARTER BOX OR REPLACE ENTIRE 415VAC STARTER BOX WITH 240VAC STARTER BOX (STARTER BOX-SP (240V SINGLE PHASE) PART NO. 85A-H-157SP)



MANUFACTURED BY:

**MOLNAR ENGINEERING PTY. LTD.**

A.B.N. 54 007 740 794

**16-20 Coglin Street, Brompton, S.A. 5007 AUSTRALIA**  
**Telephone: (08) 8346 6893, (08) 8346 6894, (08) 8346 8006**  
**Fax: (08) 8346 0097, Web: [www.molnarhoists.com.au](http://www.molnarhoists.com.au)**  
**Email: [spareparts@molnarhoists.com.au](mailto:spareparts@molnarhoists.com.au)**