

# SM270 TWO POST HOIST

7.0 tonne Electro-Hydraulic Two Post Hoist

## Spare Parts Manual

**M  
O  
L  
N  
A  
R**



PART OF THE  
STENHØJ GROUP



Updated 14/11/2019



Please read this manual before you get started.

You must read and understand the precautions for safety purposes and any damages that may occur to your property.



**MOLNAR**  
PART OF THE STENHØJ GROUP

Address:	3 Graham Street Export Park South Australia 5950
Ph:	<b>+61 (08) 8234 3611</b>
Fax:	<b>+61 (08) 8234 4322</b>
Email:	<a href="mailto:sales@molnarhoists.com.au">sales@molnarhoists.com.au</a>
Web:	<a href="http://www.molnarhoists.com.au">www.molnarhoists.com.au</a>

Specifications/images subject to change without prior notice, Images and sketches are for illustration purposes only.

## SM Series Pad Extensions

*Suits SM245 and SM270 Hoists*



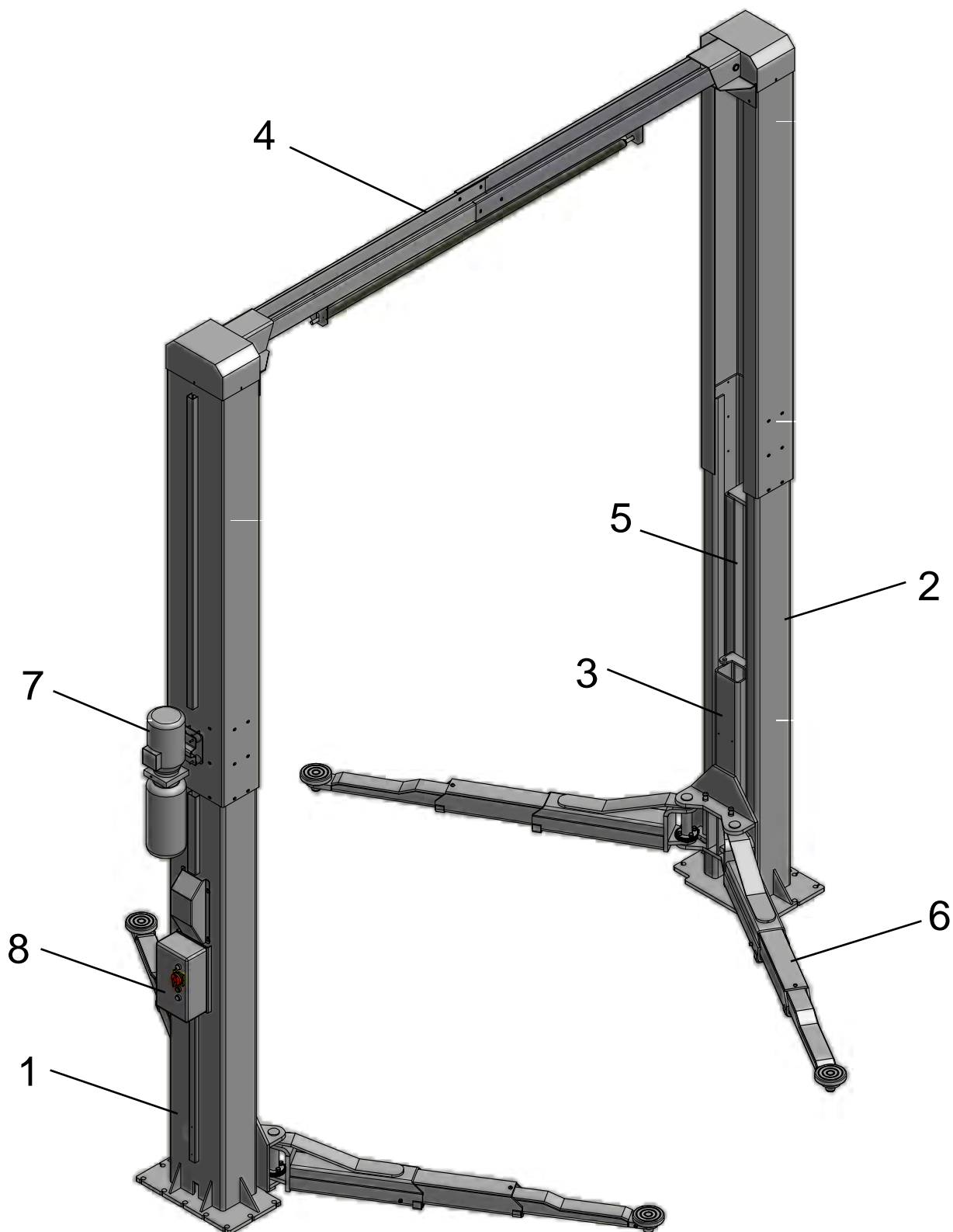
- Pad Extension Set of 4 \* 40 mm Height  
Part Number: **SM245-A-17-40mm**
- Pad Extension Set of 4 \* 100 mm Height  
Part Number: **SM245-A-16**
- Pad Extension set of 4 \* 187 mm Height  
Part Number: **SM245-A-17**

## SM270 Base Frame Set

For concrete depth between 150 - 200mm,  
optional base plates are available to order.  
Part Number **SM270-BF**



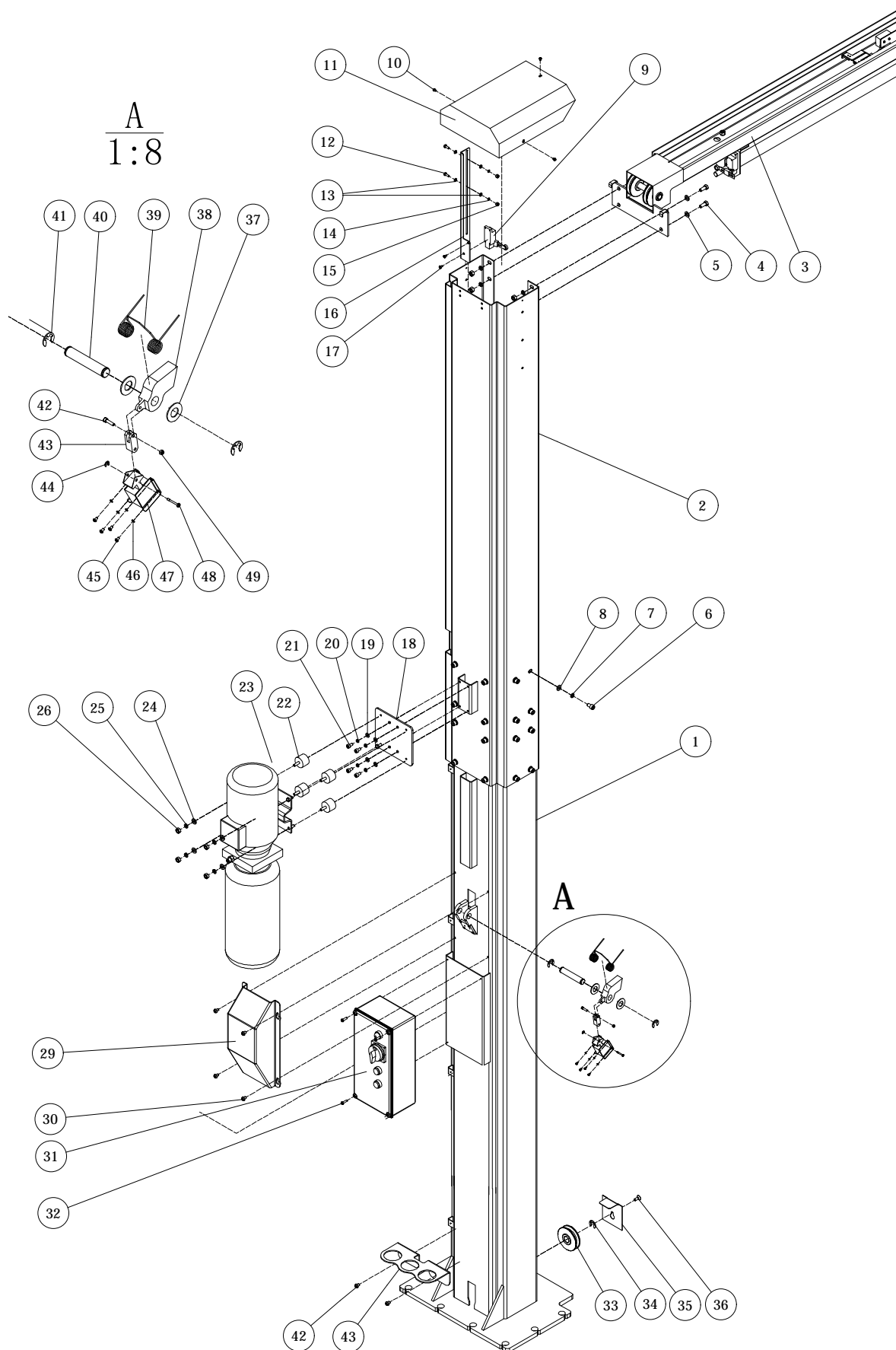
## CONSTRUCTION OF LIFT



## CONSTRUCTION OF LIFT

ITEM	QTY.	NO.	DESIGNATION	SPECIFICATIONS
1	1		Control post	
2	1		Slave post	
3	2		Carriage	
4	1		Cross beam	
5	2		Cylinder	
6	4		Arms	
7	1		Pump unit	
8	1		Control unit	

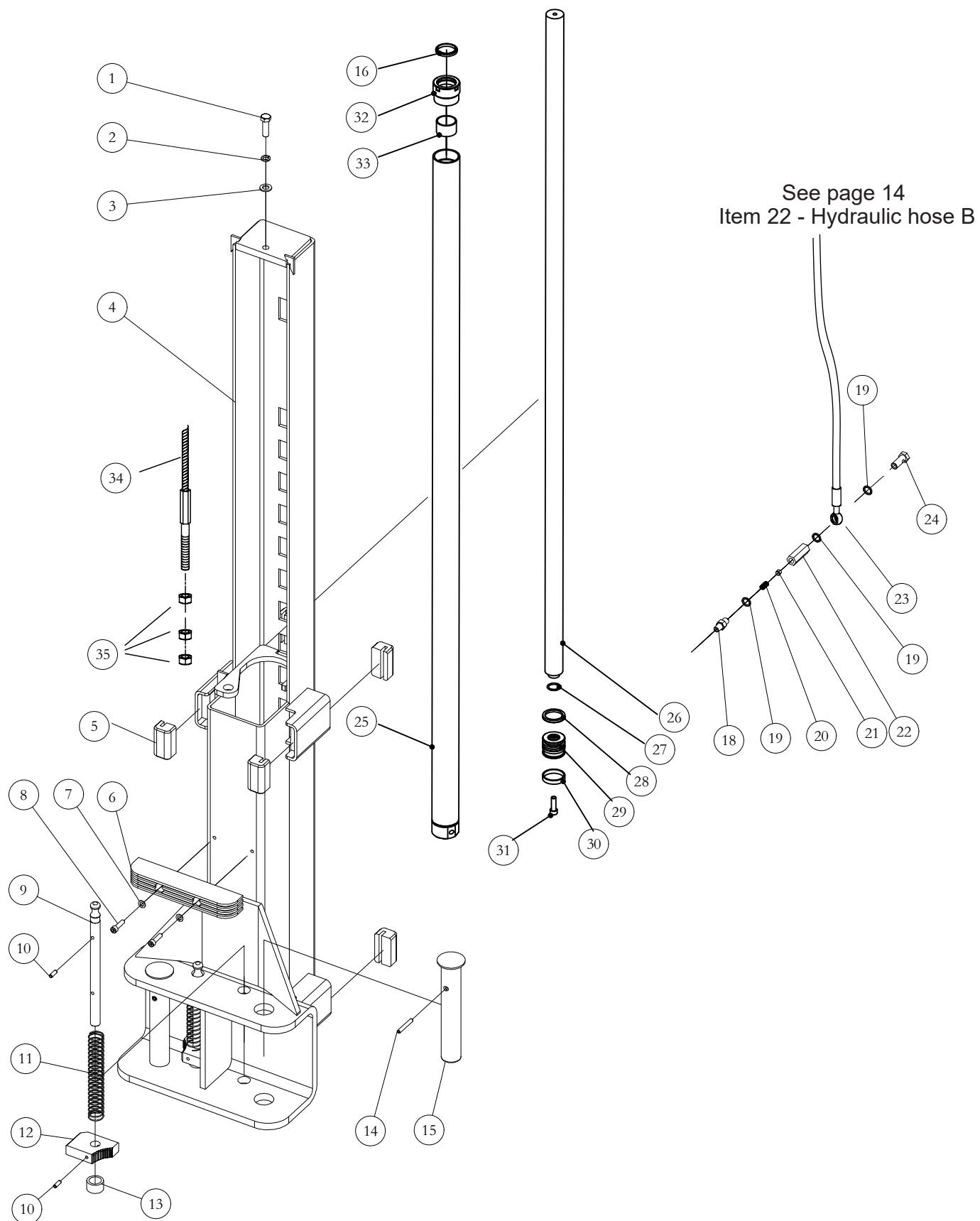
## POSTS



## POSTS

ITEM	QTY.	NO.	DESIGNATION	SPECIFICATIONS
1		SM270-P-1	Post	
2		SM270-P-2	Post extension	
3		SM270-P-3	Cross beam	
4		SM270-P-4	Hex bolt	
5		SM270-P-5	Spring washer	
6		SM270-P-6	Socket screw	
7		SM270-P-7	Spring washer	
8		SM270-P-8	Flat washer	
9		SM270-P-9	Limit switch	
10		SM270-P-10	Post cap screw	
11		SM270-P-11	Post cap	
12		SM270-P-12	Hex bolt	
13		SM270-P-13	Flat washer	
14		SM270-P-14	Spring washer	
15		SM270-P-15	Hex nut	
16		SM270-P-16	Bracket for limit switch	
17		SM270-P-17	Cross head screw	
18		SM270-P-18	Mounting plate for pump unit	
19		SM270-P-19	Flat washer	
20		SM270-P-20	Spring washer	
21		SM270-P-21	Hex screw	
22		SM270-P-22	Anti vibration rubber	
23		SM270-P-23	Pump unit	
24		SM270-P-24	Flat washer	
25		SM270-P-25	Spring washer	
26		SM270-P-26	Hex nut	
29		SM270-P-29	Safety lock cover	
30		SM270-P-30	Cross head screw	
31		SM270-P-31	Control unit	
32		SM270-P-32	Cross head screw	
33		SM270-P-33	Wire pulley	
34		SM270-P-34	E-ring	
35		SM270-P-35	Wire pulley protector	
36		SM270-P-36	Socket screw	
42		SM270-P-42	Socket bolt	
43		SM270-P-43	Solenoid connector	
44		SM270-P-44	E-ring	
45		SM270-P-45	Cross head screw	
46		SM270-P-46	Spring washer	
47		SM270-P-47	Solenoid coil	
48		SM270-P-48	Pin	
49		SM270-P-49	Hex nut	
50		SM270-P-50	Screw	
51		SM270-P-51	Electric socket	
52		SM270-P-52	Screw	
53		SM270-P-53	Socket box	
54		SM270-P-54	Air joint	
55		SM270-P-55	Cross head screw	
56		SM270-P-56	Bracket for pad extension	

## CARRIAGE

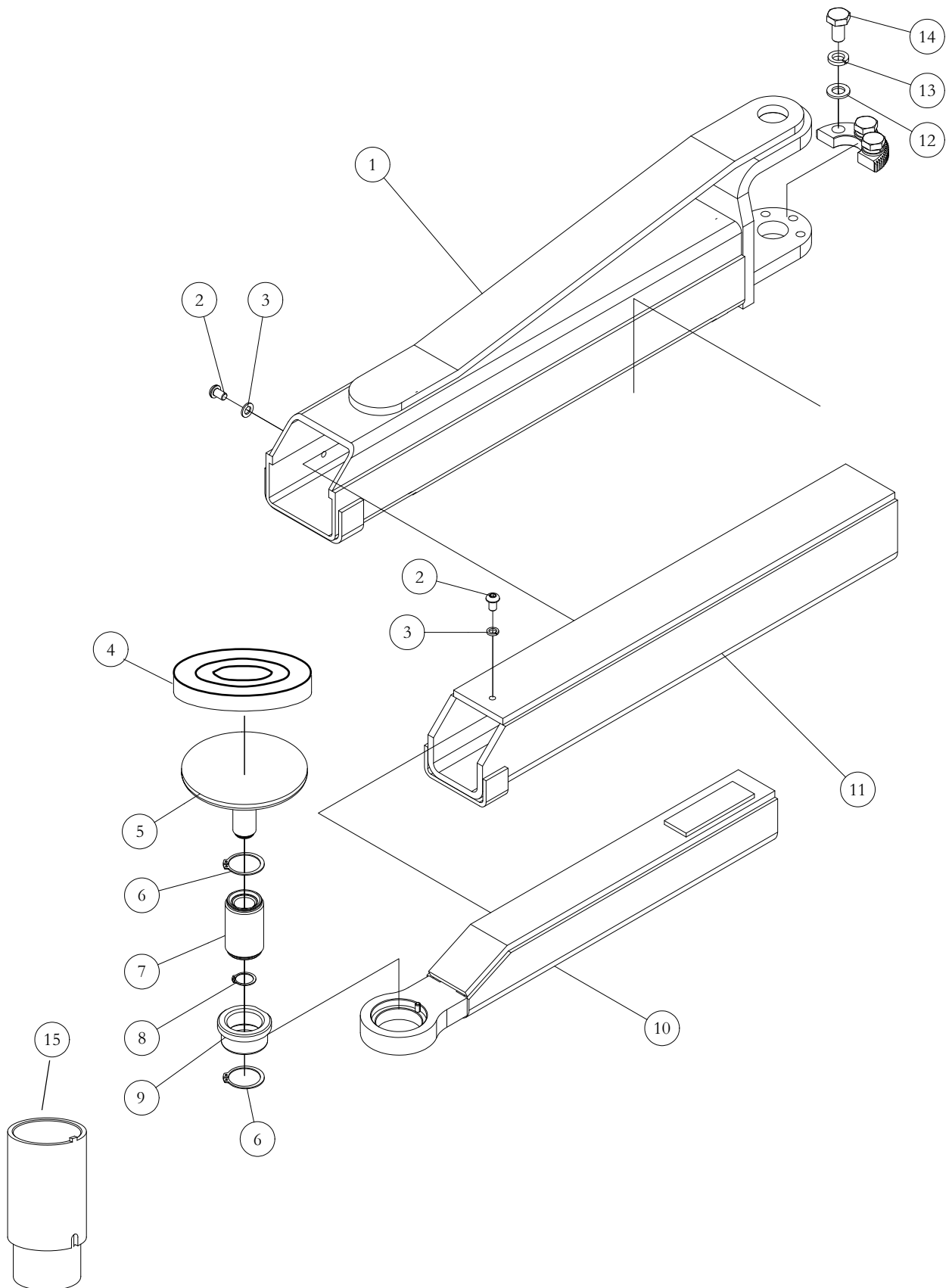




## CARRIAGE

ITEM	QTY.	NO.	DESIGNATION	SPECIFICATIONS
1		SM270-C-1	Hex bolt	
2		SM270-C-2	Spring washer	
3		SM270-C-3	Flat washer	
4		SM270-C-4	Carriage	
5		SM270-C-5	Carriage guide	
6		SM270-C-6	Door protection rubber	
7		SM270-C-7	Flat washer	
8		SM270-C-8	Socket bolt	
9		SM270-C-9	Arm lock gear shaft	
10		SM270-C-10	Spring pin	
11		SM270-C-11	Arm lock spring	
12		SM270-C-12	Inner arm lock gear	
13		SM270-C-13	Arm lock spacer	
14		SM270-C-14	Spring pin	
15		SM270-C-15	Arm shaft	
16		SM270-C-16	Dust seal	
18		SM270-C-18	Steel nipple	
19		SM270-C-19	Combined washer	
20		SM270-C-20		
21		SM270-C-21		
22		SM270-C-22	Cylinder connector	
23		SM270-C-23	Hydraulic hose adapter	
24		SM270-C-24		
25		SM270-C-25	Cylinder tube	
26		SM270-C-26	Rod bar	
27		SM270-C-27	O ring	
28		SM270-C-28	Seal ring	
29		SM270-C-29	Piston	
30		SM270-C-30	Piston ring	
31		SM270-C-31	Wrench bolt	
32		SM270-C-32	Head cover	
33		SM270-C-33	DU bearing	
34		SM270-C-34	Steel cable	
35		SM270-C-35	Nut	

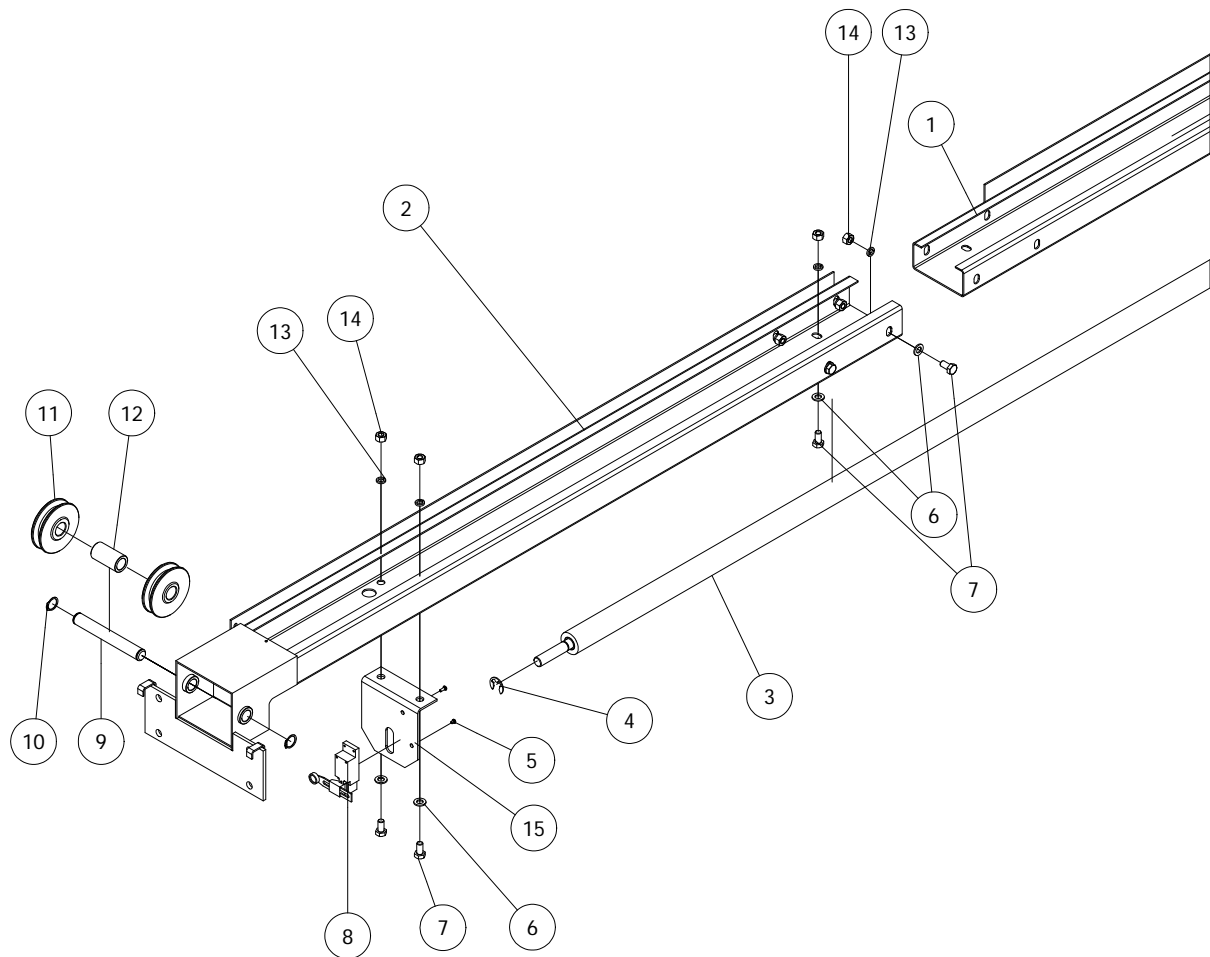
## ARM



## ARMS

ITEM	QTY.	NO.	DESIGNATION	SPECIFICATIONS
1		SM270-A-1	Lifting arm	
2		SM270-A-2	Socket bolt	
3		SM270-A-3	Flat washer	
4		SM270-A-4	Rubber pad	
5		SM270-A-5	Arm pad plate	
6		SM270-A-6	Circlip	
7		SM270-A-7	Arm pad supporter	
8		SM270-A-8	Circlip	
9		SM270-A-9	Arm pad adapter	
10		SM270-A-10	3rd section of lifting arm	
11		SM270-A-11	2nd section of lifting arm	
12		SM270-A-12	Flat washer	
13		SM270-A-13	Spring washer	
14		SM270-A-14	Hex bolt	
15		SM270-A-15	Extension for pad 100mm - set of 4	

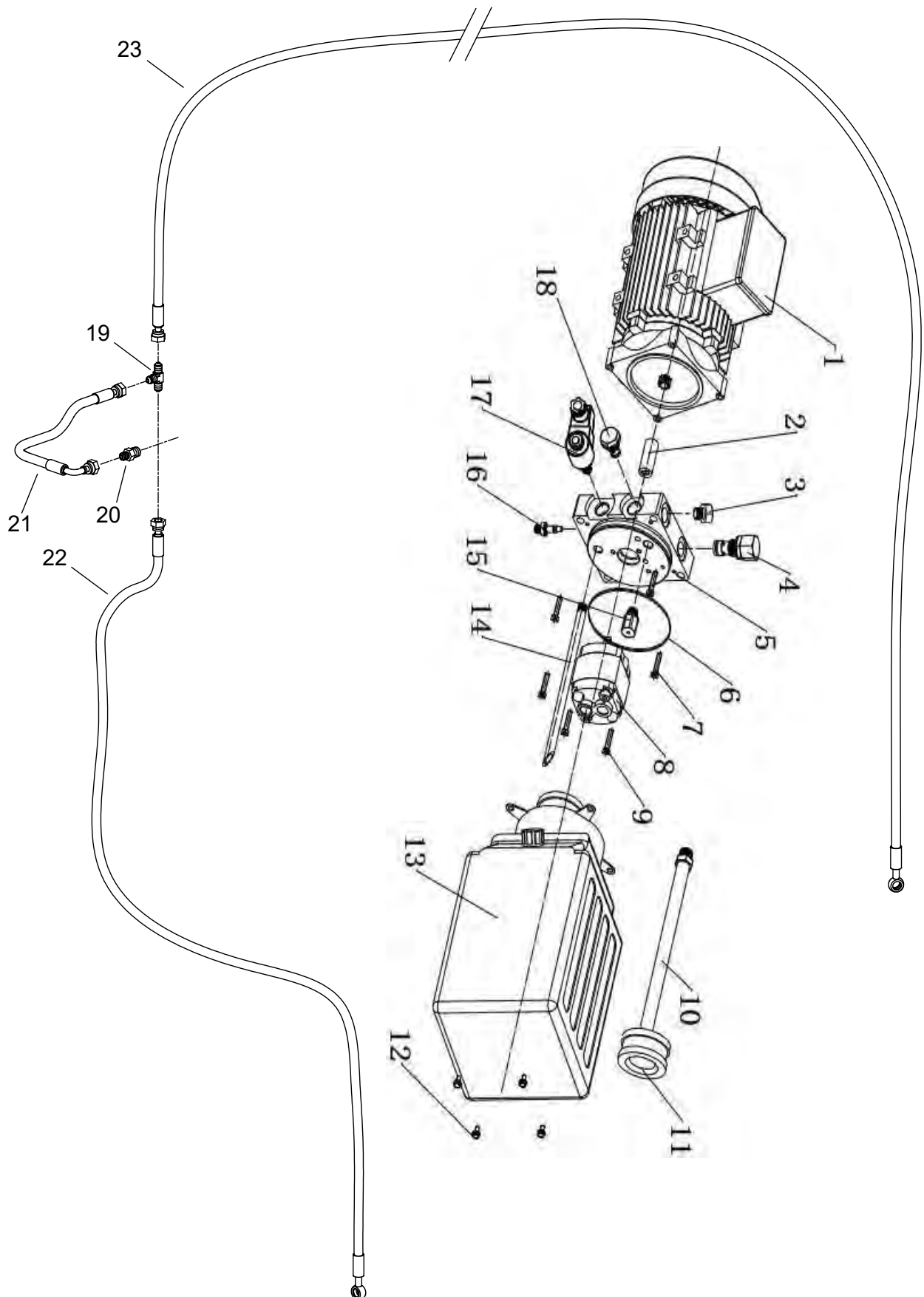
## CROSS BEAM



## CROSS BEAM

ITEM	QTY.	NO.	DESIGNATION	SPECIFICATIONS
1		SM270-CB-1	Cross beam (1)	
2		SM270-CB-2	Cross beam (2)	
3		SM270-CB-3	Top limit touch bar	
4		SM270-CB-4	E-ring	
5		SM270-CB-5	Cross head bolt	
6		SM270-CB-6	Flat washer	
7		SM270-CB-7	Hex nut	
8		SM270-CB-8	Limit switch	
9		SM270-CB-9	Pulley shaft	
10		SM270-CB-10	Flat washer	
11		SM270-CB-11	Wire pulley	
12		SM270-CB-12	Wire pulley spacer	
13		SM270-CB-13	Spring washer	
14		SM270-CB-14	Hex bolt	
15		SM270-CB-15	Top limit switch bracket	

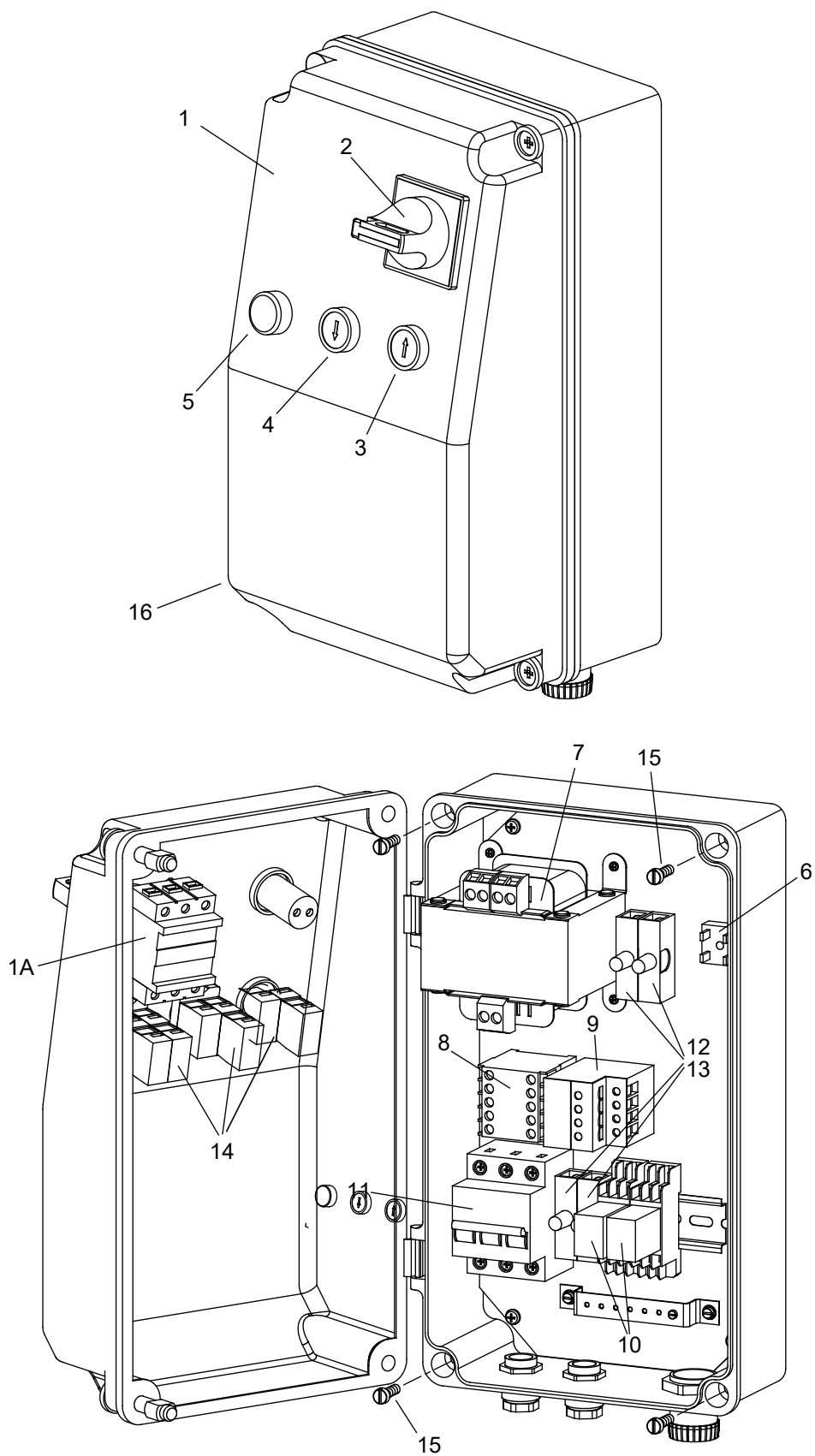
## PUMP UNIT



## PUMP UNIT

ITEM	QTY.	NO.	DESIGNATION	SPECIFICATIONS
1		SM270-PU-1	Motor	
2		SM270-PU-2	Shaft adaptor	
3		SM270-PU-3	Stopper	
4		SM270-PU-4	Pressure valve	
5		SM270-PU-5	Manifold block	
6		SM270-PU-6	Seal ring	
7		SM270-PU-7	Bolt for block	
8		SM270-PU-8	Pump	
9		SM270-PU-9	Bolt for pump	
10		SM270-PU-10	Suction pipe	
11		SM270-PU-11	Filter	
12		SM270-PU-12	Screw for tank	
13		SM270-PU-13	Fuel tank	
14		SM270-PU-14	Oil return pipe	
15		SM270-PU-15	Cushion valve	
16		SM270-PU-16	Throttle valve	
17		SM270-PU-17	Solenoid valve c/w coil	
18		SM270-PU-18	One-way valve	
19		SM270-PU-19	T-union	
20		SM270-PU-20	Hexagon nipple	
21		SM270-PU-21	Hydraulic hose A	
22		SM270-PU-22	Hydraulic hose B	
23		SM270-PU-23	Hydraulic hose C	

## CONTROL UNIT





## CONTROL UNIT

ITEM	QTY.	NO.	DESIGNATION	SPECIFICATIONS
		SM270-PC-3PH	<b>Control unit cpl.</b>	400/3/50
1		SM270-PC-1	Control box housing	
2		SM270-PC-2	Main switch	
3		SM270-PC-3	Pushbutton UP	
4		SM270-PC-4	Pushbutton DOWN	
5		SM270-PC-5	Lamp	
6		SM270-PC-6	Rectifier	
7		SM270-PC-7	Transformer	
8		SM270-PC-8	Contactor	
9		SM270-PC-9	Motor Thermo Relay	
10		SM270-PC-10	Relay	
11		SM270-PC-11	Circuit breaker	
12		SM270-PC-12	Fuse holder	
13		SM270-PC-13	Fuse	
14		SM270-PC-14	Contact element	
15		SM270-PC-15	Screw	
16		SM270-PC-16	Control box	