

SM450-A FOUR POST HOIST

5 TONNE FOUR POST HOIST

Spare Parts Manual



**M
O
L
N
A
R**



PART OF THE
STENHØJ GROUP



MOLNAR

PART OF THE STENHØJ GROUP

Updated 13/11/19

**Before
taking into operation
check system compo-
nents, control, emer-
gency stop and safety
equipment for condi-
tion, damage and
correct function!**



MOLNAR

PART OF THE STENHØJ GROUP

3 Graham Street
Export Park
South Australia
5950

Tel.: + 61 (0)8 8346 6893
Fax.: + 61 (0)8 8346 0097

E-mail: sales@molnarhoists.com.au
Internet.: www.molnarhoists.com.au

TABLE OF CONTENTS

STRUCTURE.....4

POST.....6

CYLINDER.....8

TRANSVERSE BEAM.....10

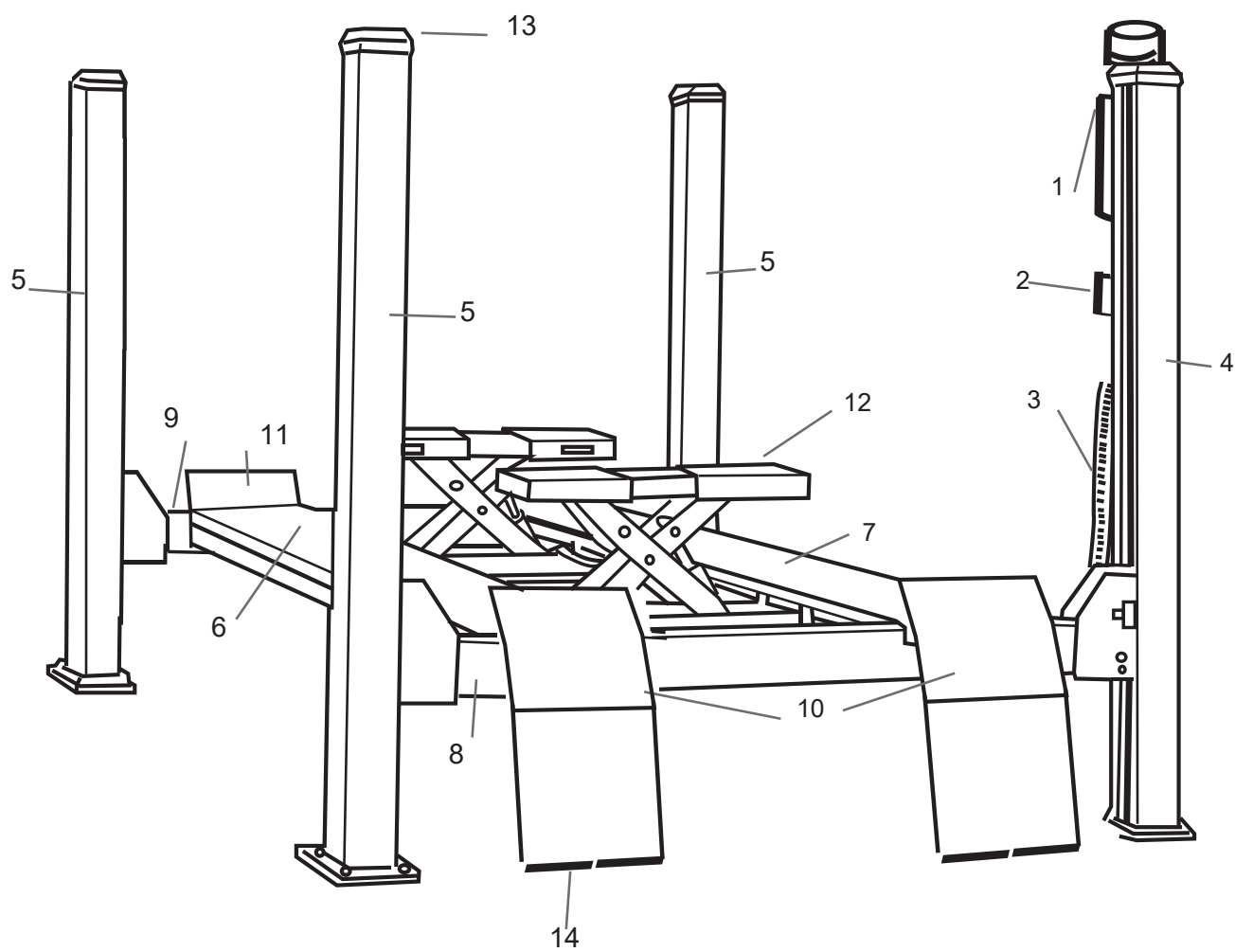
MOTOR12



POWER CONTROL.....14

CABLES.....16

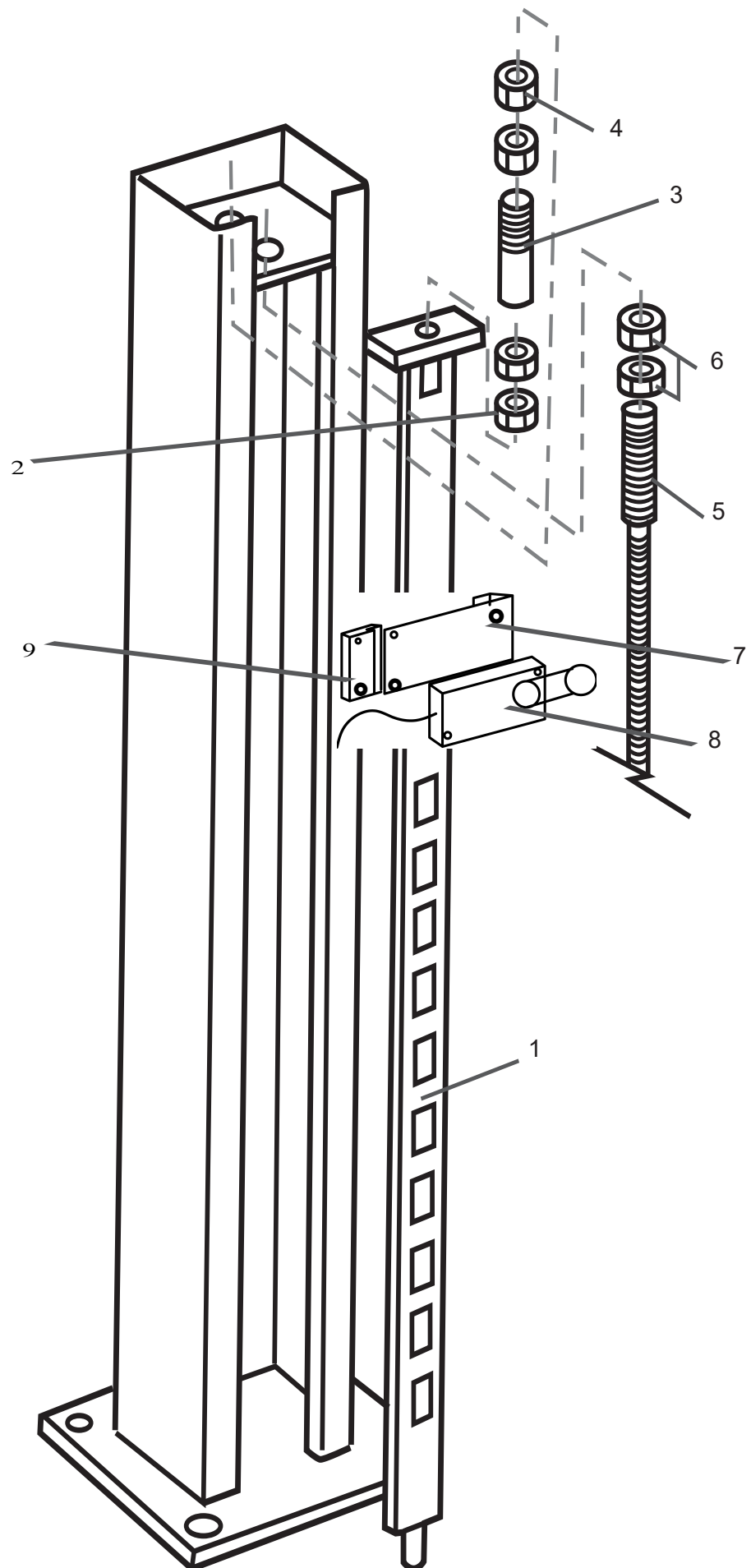
BLANK.....18

STRUCTURE



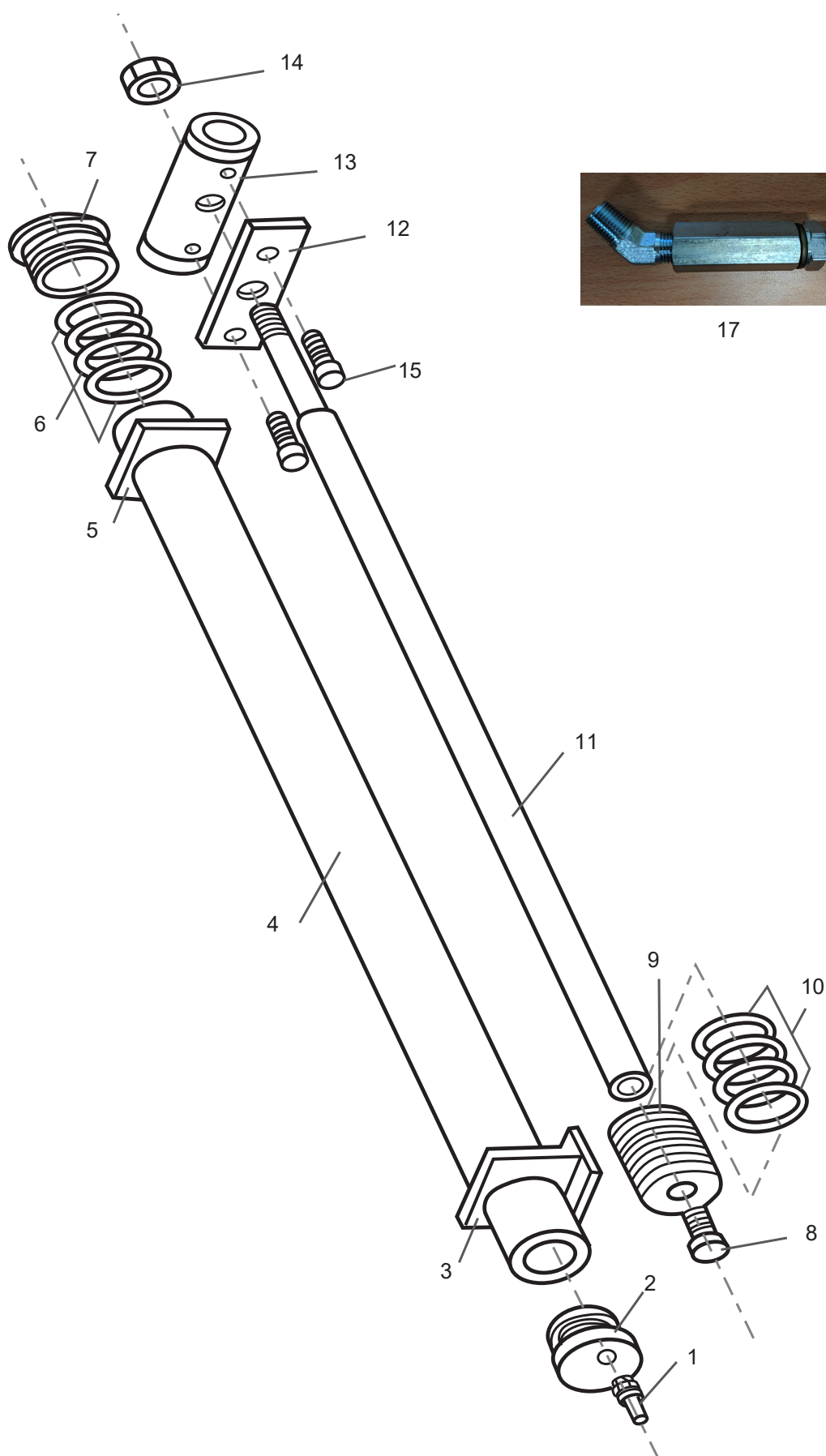
SM450-A		Molnar 4 Post Hoist			5 / 20
STRUCTURE					
ITEM	QTY.	NO.	DESIGNATION		SPECIFICATIONS
1	1	SEE PAGE 12	hydraulic power pack		S/N before 4P5D0142 S/N 4P5D0142 onwards
2	1	SEE PAGE 14	240V control unit 24V Control unit		
3	1	SM450-S-3	service hose		
4	1	SM450-S-4	control post		
5	3	SM450-S-5	non-control post		
6	1	SM450-S-6	slave platform		
7	1	SM450-S-7	control platform		
8	1	SM450-S-8	rear transverse beam		
9	1	SM450-S-9	front transverse beam		
10	2	SM450-S-10	run-up ramps		
11	2	SM450-S-11	wheel stops		
12	1	MICRO 3000	jacking beam		
13	4	SM450-S-13	post covers		
14	4	SM450-S-14	run up ramp rollers		
15					
		SM450-A-1	<div></div> <div>Air Line T Piece</div>		
		SM450-A-2	<div></div> <div>Air Line / Pump Connector</div>		
		SM450-A-3	Air Line (per Meter)		

POST



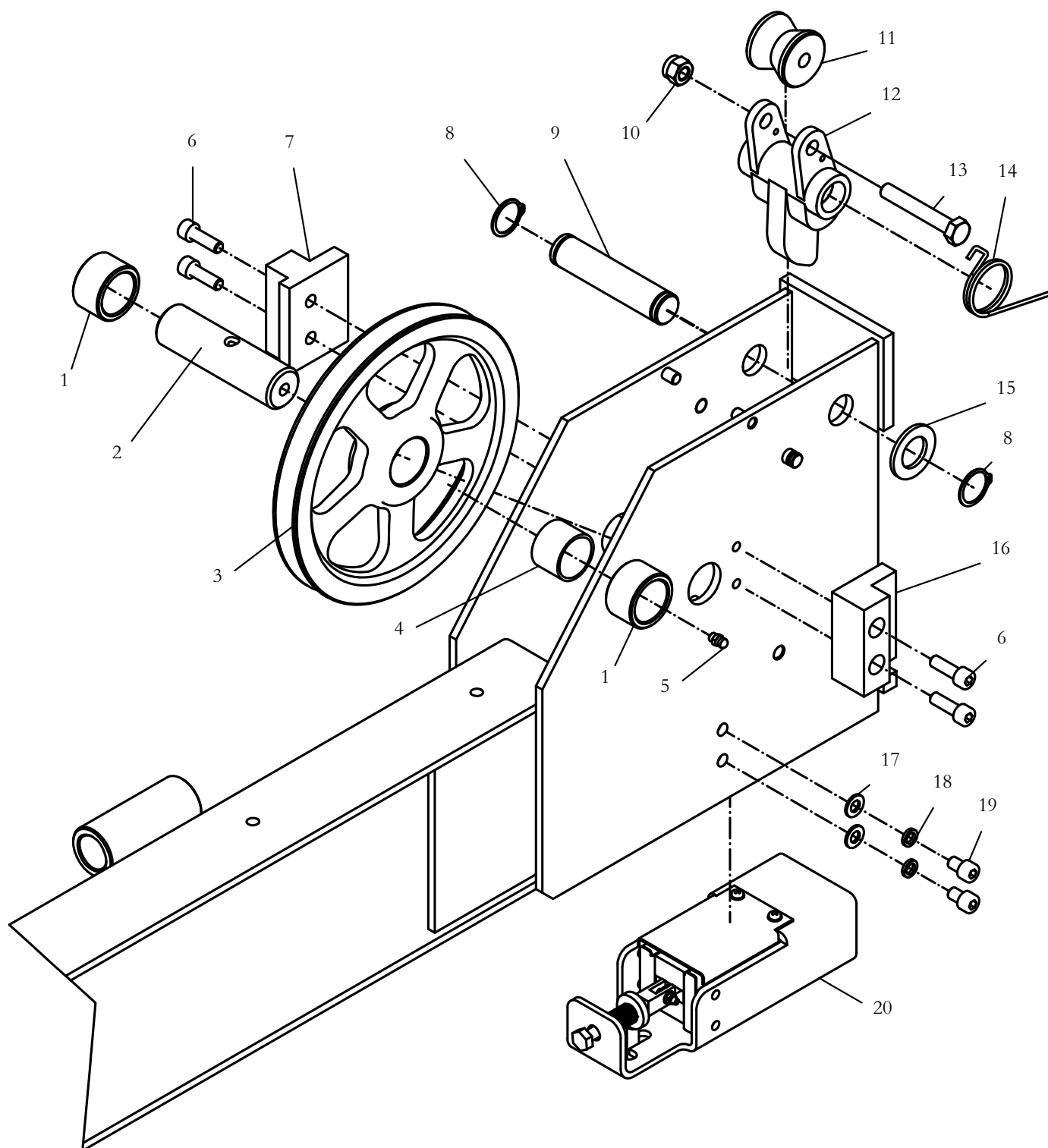
SM450-A		Molnar 4 Post Hoist			7/20
POST					
ITEM	QTY.	NO.	DESIGNATION		SPECIFICATIONS
1	4	SM450-P-1-A SM450-P-1	Safety bar (old version) Safety bar(new version)		S/N before 4P5D0142 S/N 4P5D0142 onwards
2	8	SM450-P-2	adjusting nut (thin)		
3	4	SM450-P-3	adjusting stud		
4	8	SM450-P-4	adjusting nut (thick)		
5	2	SEE PAGE 16	cable		
6	8	SEE PAGE 16	cable nut		
7	1	SM450-P-7	limit switch mounting bracket		
8	1	SM450-P-8	limit switch		
9	1	SM450-P-9	mounting bracket locking plate		

CYLINDER



SM450-A		Molnar 4 Post Hoist			9/20
CYLINDER					
ITEM	QTY.	NO.	DESIGNATION		SPECIFICATIONS
1	1	SM450-C-1	air filter		
2	1	SM450-C-2	cylinder tail cover		
3	1	SM450-C-3	tail bracket		
4	1	SM450-C-4	barrel		
5	1	SM450-C-5	head bracket		
6	1	SM450-C-6	gland seal kit		
7	1	SM450-C-7A	cylinder gland - OLD		S/N before 4P5D0333
	1	SM450-C-7B	cylinder gland - NEW		S/N 4P5D0333 onwards
8	1	SM450-C-8	bolt		
9	1	SM450-C-9	piston		
10	1	SM450-C-10	piston seal kit		
11	1	SM245-C-11	piston rod		
12	1	SM450-C-12	cable clamp plate		
13	1	SM450-C-13	cable clamp yoke		
14	1	SM450-C-14	nut		
15	2	SM450-C-15	bolt		
16	1	SM450-C-16A	cylinder complete unit - OLD		S/N before 4P5D0333
16	1	SM450-C-16B	cylinder complete unit - NEW		S/N 4P5D0333 onwards
17	1	SM450-C-17	cylinder-hose connection valve		

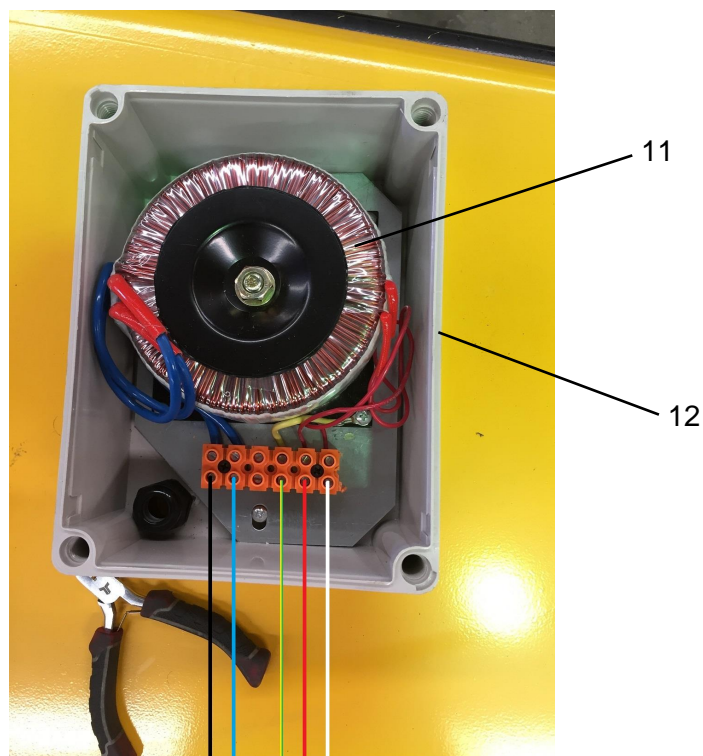
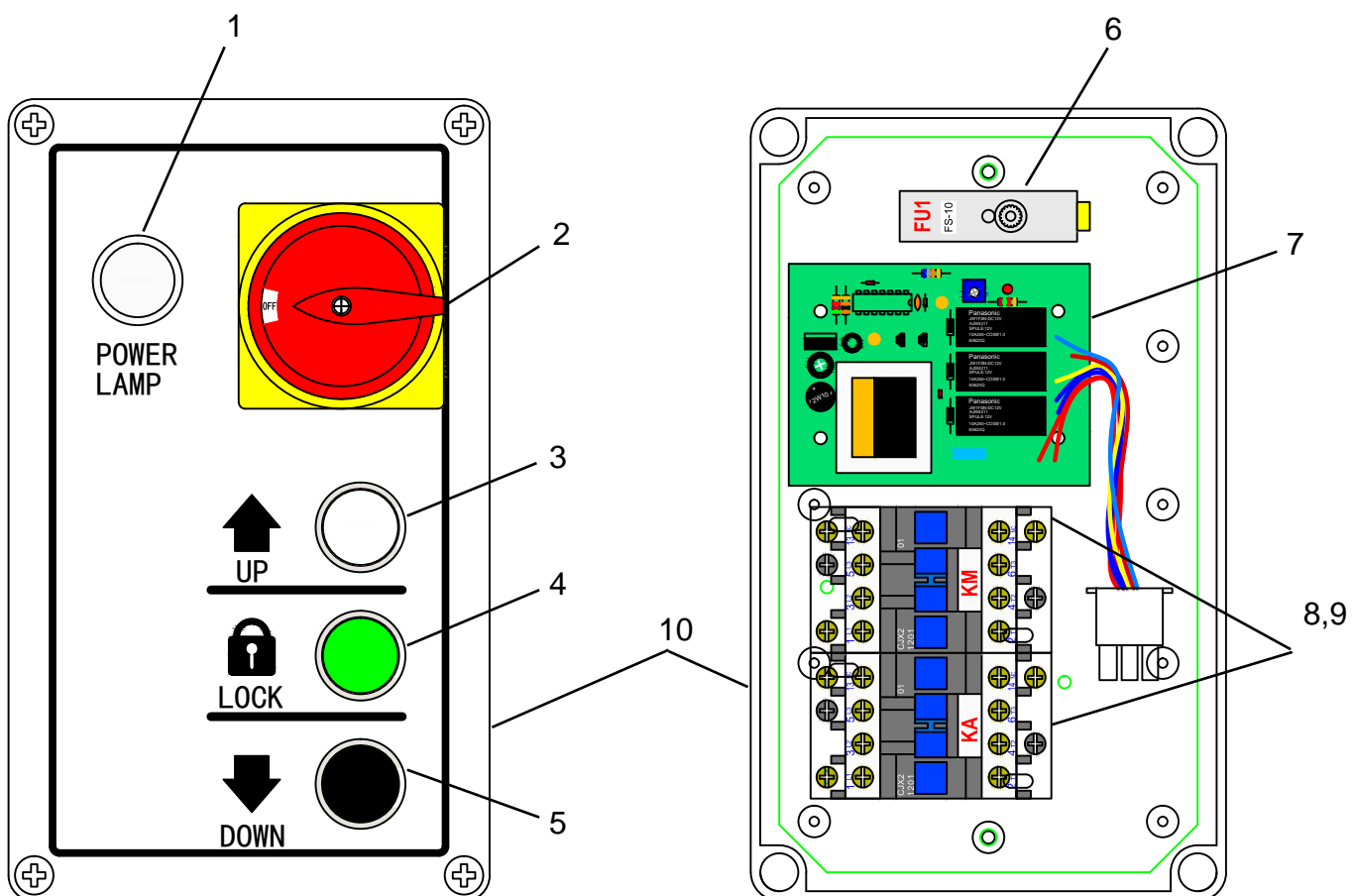
TRANSVERSE BEAM



SM450-A		Molnar 4 Post Hoist			11/20
TRANSVERSE BEAM					
ITEM	QTY.	NO.	DESIGNATION		SPECIFICATIONS
1	8	SM450-T-1	pulley spacer		dia.45 x dia.30.5 x 24L
2	4	SM450-T-2	pulley pin (transverse beam)		
3	4	SM450-T-3	pulley (transverse beam)		
4	4	SM450-T-4	bush		
5	4	SM450-T-5	grease nipple		
6	8	SM450-T-6	bolt		
7	8	SM450-T-7	guide block/pin retainer		
8	4	SM450-T-8	circlip		
9	4	SM450-T-9	safety shaft		
10	4	SM450-T-10	nut		
11	4	SM450-T-11	safety roller		
12	4	SM450-T-12	safety toggle		
13	4	SM450-T-13	bolt		
14	4	SM450-T-14	spring		
15	4	SM450-T-15	washer		
16	8	SM450-T-16	guide block		
17	16	SM450-T-17	washer		
18	16	SM450-T-18	locking washer		
19	16	SM450-T-19	bolt		
20	4	SM450-T-20*	safety lock assembly		
		SM450-T-20A	lock housing		
		SM450-T-20B	locking device		
		SM450-T-20C	connector for locking device		
		SM450-T-20D	locking solenoid		
		SM450-T-20E	locking handle		
			<div>* SM450-T-20-24V for LV Controls (SN # 4P5D0142 onwards) SM450-T-20-220V (SN # before 4P5D0142)</div>		

SM450-A		Molnar 4 Post Hoist			13/20
MOTOR					
ITEM	QTY.	NO.	DESIGNATION		SPECIFICATIONS
1	1	SM450-M-1 SM450-M-1A	motor 3 phase motor 1 phase		
2	1	SM450-M-2	shaft adaptor		
3	2	SM450-M-3	stopper		
4	1	SM450-M-4	pressure valve		
5	1	SM450-M-5	manifold block		
6	1	SM450-M-6	seal ring		
7	4	SM450-M-7	bolt for block		
8	1	SM450-M-8	pump		
9	2	SM450-M-9	bolt for pump		
10	1	SM450-M-10	suction pipe		
11	1	SM450-M-11	filter		
12	4	SM450-M-12	screw for tank		
13	1	SM450-M-13	oil tank		
14	1	SM450-M-14	oil return pipe		
15	1	SM450-M-15	cushion valve		
16	1	SM450-M-16	throttle valve		
17	4	SM450-M-17*	solenoid valve set(valve + coil)		
18	1	SM450-M-18	one-way valve		
19	1	SM450-M-19	motor mount		
20	2	SM450-M-20	screw		
21	1	SM450-M-21	hydraulic hose		
22	1	SM450-M-22 SM450-M-22A	complete hydraulic power pack 3 phase complete hydraulic power pack 1 phase		
			*Hoist Serial number 4P5D0142 onwards		
			For hoists before this serial number use part SM450-M-17HV		

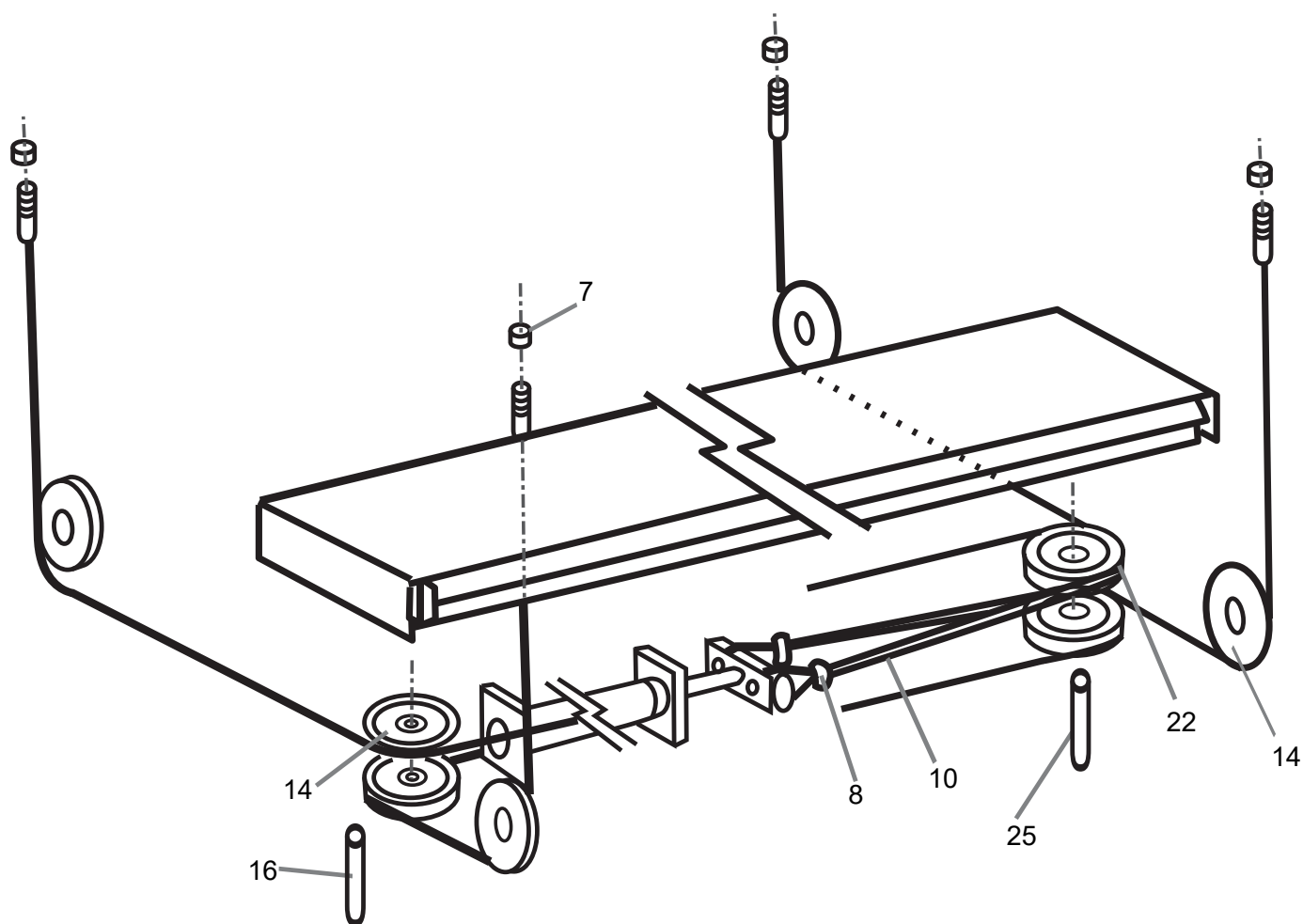
POWER CONTROL



Transformer ONLY for 24V Low Voltage Control
(Hoist Serial Number 4P5D0142 onwards)

SM450-A		Molnar 4 Post Hoist			15/20
POWER CONTROL					
ITEM	QTY.	NO.	DESIGNATION		SPECIFICATIONS
	1	SM450-PC-11 SM450-PC-11A	240V control unit complete - 3 phase 240V control unit complete - 1 phase		S/N before 4P5D0142 S/N before 4P5D0142
	1	SM450-PC-11 SM450-PC-11A	24V Control unit complete - 3 phase 24V control unit complete - 1 phase		S/N 4P5D0142 onwards S/N 4P5D0142 onwards
1	1	SM450-PC-1	power lamp		
2	1	SM450-PC-2	main switch		
3	1	SM450-PC-3	push button up		
4	1	SM450-PC-4	push button lock		
5	1	SM450-PC-5	push button down		
6	1	SM450-PC-6	fuse holder		
7	1	SM450-PC-7	PCB		
8	1	SM450-PC-8	contactor		
9	1	SM450-PC-9	contactor		
10	1	SM450-PC-10	control box housing		
11	1	SM450-PC-11	transformer		S/N 4P5D0142 onwards
12	1	SM450-PC-12	transformer housing		S/N 4P5D0142 onwards

ROPES



26

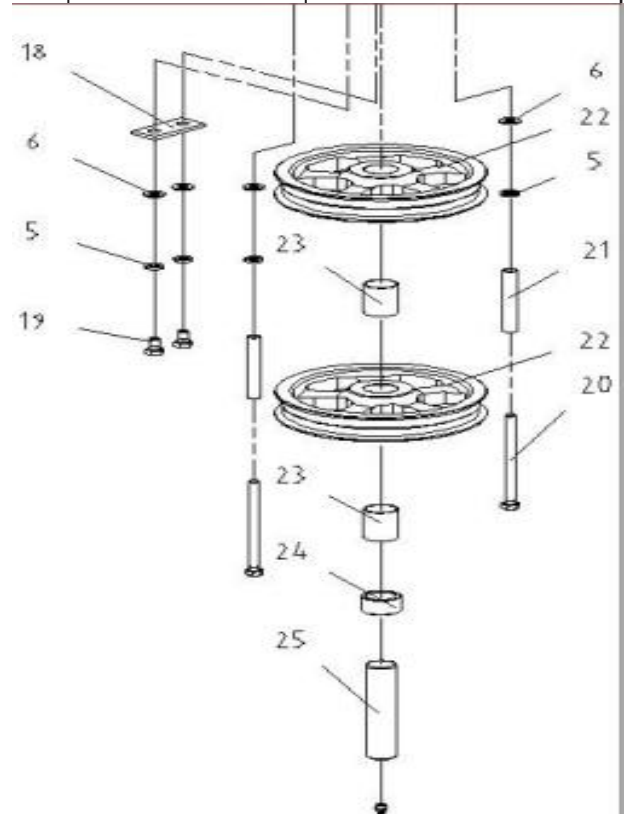
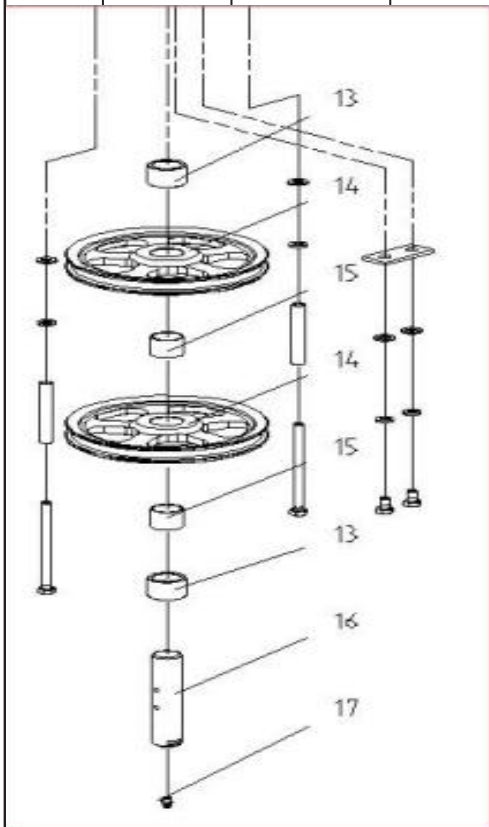
Cable Retaining Bolt
SM450-R-RB

(Includes bolt, nut sleeve,
washer, spring washer)

SM450-A	Molnar 4 Post Hoist	17-20
---------	---------------------	-------

ROPES

ITEM	QTY.	NO.	DESIGNATION		SPECIFICATIONS
5	4	SM450-R-8	spring washer		
6	4	SM450-R-9	plain washer		
7	8	SM450-R-7	cable nut		
8	4	SM450-R-5	cable grips		
9	1				
10	2	SM450-R-4	cable		
13	4	SM450-R-13	single groove pulley spacer (platform)		dia.40 x dia.30.4 x 26L
14	6	SM450-T-3	pulley single groove		
15	4	SM450-T-4	bush - DU bearing		
16	2	SM450-R-3S1	single groove pulley pin (platform) - NEW		L=136 (S/N 4P5D0142 onwards)
		SM450-R-3S2	single groove pulley pin (platform) - OLD		L=131 (S/N before 4P5D0142)
17	4	SM450-T-5	grease nipple		
18	4	SM450-R-18	shaft locking plate		
19	4	SM450-R-19	screw		
20	4	SM450-R-20	retaining bolt		
21	4	SM450-R-21	retaining bolt tube		
22	2	SM450-R-2	pulley Double groove		
23	4	SM450-R-23	bush - DU bearing		
24	4	SM450-R-24	double groove pulley spacer		dia.40 x dia.30.4 x 22L
25	2	SM450-R-3D1	double groove pulley pin (platform) - NEW		L=136 (S/N 4P5D0142 onwards)
		SM450-R-3D2	double groove pulley pin (platform) - OLD		L=131 (S/N before 4P5D0142)
26	4	SM450-R-RB	cable retaining bolt assembly		



18/20	Molnar 4 Post Hoist	SM450-A
BLANK		

19/20		Molnar 4 Post Hoist			SM450-A
BLANK					