

**LASER 4.3-CP**

**3 x Car Stacker**

# **Operation & Maintenance Manual**



**Address: 3 Graham Street, Export Park South  
Australia 5950**

**Ph: +61 (08) 8234 3611**

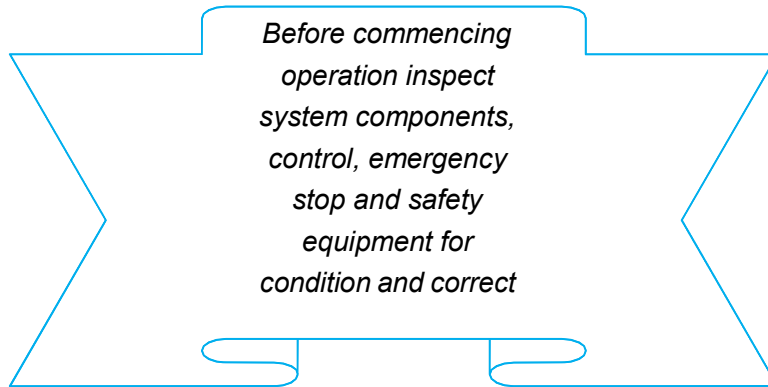
**Fax: +61 (08) 8234 4322**

**Email: [sales@molnarhoists.com.au](mailto:sales@molnarhoists.com.au)**

**Web: [www.molnarhoists.com.au](http://www.molnarhoists.com.au)**



<b>Table of Contents</b>	<b>Page</b>
Warranty .....	3
General Information .....	4
Safety Considerations .....	5-7
Operating Personnel .....	8
Structure and Function .....	9
Operational Instructions .....	10-12
Preventive Maintenance .....	13
Maintenance .....	14-17
Cleaning .....	18
Trouble Shooting .....	19-20
Electric Diagram .....	21
Hydraulic Power Unit .....	22-23
Cable Arrangement .....	24



Please read this manual before you get started.  
You must read and understand the precautions for safety purposes and any damages that may occur to your property.  
If these instructions are not followed strictly, the **car stacker** is not covered by warranty.



Specifications/images subject to change without prior notice, Images and sketches are for illustration purposes only

## **WARRANTY**

### **Molnar Parking Warranty Statement**

Molnar Parking warrants that the Molnar Parking product and Molnar Parking Lift approved parts sold under this warranty:

1. Will be free from defects in materials and workmanship, and shall conform to and perform in accordance with, the related documentation supplied by Molnar Parking including specifications and instructions on product.
2. Will comply with the Australian and New Zealand standard quality requirements in force at the time of manufacture.

Note: Please retain a copy of the product invoice and records of maintenance. In the event of a warranty claim, Molnar Car stackers will require a copy of these to process the warranty claim.

### **Warranty Period**

In addition to all rights and remedies which you may be entitled to under Australian Consumer Law and any other relevant legislation, Molnar Parking warrants each of its products to be free of defects in materials and workmanship for a maximum period of three (3) years on individual products and one (1) year on spare parts and accessories. The Warranty period commences and is calculated from the date on which the product is first purchased by its original owner.

Warranty repairs do not extend the length of the warranty period. All replaced parts and products become the property of Molnar Parking. New or reconditioned parts and products may be used in the performance of warranty service. Customers will be charged for repair or replacement of the product made after the expiration of the warranty period, at the rates and terms then in effect by Molnar Parking or its authorized dealers.

\* Costs for travel over 30 kilometers from the closest Molnar Parking authorized service dealer are not covered under this Warranty and additional fees may apply.

### **Warranty Claims Procedure**

To claim under this warranty, you can lodge a claim by sending a completed Molnar Parking Warranty Claim Form to Molnar Parking at the email address provided.

Warranty Claim Forms can be downloaded directly from the Molnar Hoists website and emailed to [warranty@stenhoj.com.au](mailto:warranty@stenhoj.com.au)

<https://molnarhoists.com.au/documentation/warranty/>

## GENERAL INFORMATION

### Information about the operating manual

This operating manual describes the operation and maintenance of the machine. Strict compliance with all the specified notes on safety and instructions is essential for safe working and proper handling of the equipment.

Apart from that, all accident prevention instructions valid at the place of use and the general safety regulations must also be adhered to.

This operating manual is part of the product and should always be kept in the immediate vicinity of the machine, accessible for the personnel entrusted with installation, operation, maintenance and cleaning.

For better representation of the explanations, the graphical artwork in this manual is not strictly according to scale, but may slightly vary from the actual design of the machine.

The operating manuals of the supporting components apply alongside this operating manual. Please observe the notes contained therein - especially the safety notes.

### Explanation of symbols

Important safety and machine-technical notes in this operating manual are marked with symbols. The notes must be adhered to in order to avoid accidents, personal injuries and damage to property.



#### **WARNING!**

This symbolizes dangers that can lead to adverse effects on health, injuries, permanent physical damage or to death.

Adhere at all costs to the notes specified regarding work safety, and be particularly careful in these cases.



#### **WARNING! Danger of electric current!**

This symbol draws attention to dangerous situations involving electrical currents. There is a danger of serious injury or death if the safety notes are not complied with. The work may only be carried out by qualified electricians.



#### **ATTENTION!**

This symbolizes notes, which if not complied with, can lead to damages, malfunctions and/or break-down of the machine.

## **SAFETY**

This section offers an overview of all important safety aspects for an optimal protection of personnel against danger and ensures safe and disruption free operation of the machine. In addition to this, concrete notes on safety to avert danger are provided and marked with symbols in the individual chapters. Furthermore, any pictograms, signs and labels on the machine are to be observed and kept legible at all times.

### **General**

At the time of development and manufacture the equipment complies with the valid and established technical rules and regulations and is safe to operate. However, danger may arise from this machine if it is used unprofessionally by untrained personnel, or if it is used improperly or not for the purpose it is intended for. Each person entrusted with work on or with the machine must have read and understood the operating manual before starting work.

The customer is advised to demand a written confirmation that all relevant persons have read the operating manual.

Changes of any kind as well as attachments or conversions to the machine are prohibited.

Safety, warning and operation related decals on the machine must always be kept in legible condition.

Damaged decals or stickers must be immediately replaced.

Specified settings and adjustment ranges must be strictly complied with.

### **Plant Design Registration**

**LASER 4.3 CP**

**WSV- 015050 1845**

## Customer's Responsibility

This operating manual should always be kept in the immediate vicinity of the machine, accessible for the personnel entrusted with installation, operation, maintenance and cleaning. The machine must only be operated in technically perfect and safe condition. Always ensure free access to all safety features and check these at regular intervals.

The customer is obliged to determine compliance of work safety measures specified with the current status of legal statutes and to observe any new regulations over the entire period in which the machine is used. The laws on industrial safety and regional directives and regulations valid at the place of use of the machine are to be complied with. The generally valid notes on industrial safety and accident prevention instructions as well as the valid environmental protection regulations applicable at the place of use are to be observed and adhered to alongside the notes on industrial safety in this operating manual.

The customer and personnel authorized by him/her are responsible for the disruption-free operation of the machine as well as for unambiguous determination of responsibilities during installation, operation, maintenance and cleaning of the machine.

Details of the operating manual are complete and must be adhered to without limitation! Furthermore, the customer must also ensure that:

- Other dangers that result from special working conditions at the place of use are determined in a risk assessment.
- All other instructions and notes on safety that result from the risk assessment of workplaces on the machine are summarized in operating instructions.

## Intended Use

Operational safety is only guaranteed when adhering to the intended use of the device.

This lifting device is specially developed to lift motor cars and we strongly recommend not to lift any other equipment with this automotive lift.

The lifting platform has been designed and built for the use inside workshops. Use of the lift for under-sealing of cars and car wash is not allowed. Riding, climbing and/or standing on the lifting platform as well as using it for lifting or lowering loads other than the ones specified above or installing and operating it outside in an unprotected environment is prohibited.



### **ATTENTION!**

Any other use of the device that differs from this or exceeds this is prohibited and is considered unintended use!

Claims of any kind against the manufacturer and/or his authorized representatives resulting from damage caused by unintended use of the device are excluded. The customer is solely liable for any damage occurring during unintended use. Intended use also includes correct adherence to assembly, operating, maintenance and cleaning instructions.

## **SAFETY CONSIDERATIONS**

Read this entire manual carefully before installing or using the product. Do not install or operate the product until you are familiar with all operating instructions and warnings. Do not allow anyone else to operate it until they are familiar with all operating instructions and warnings. Keep this manual on or near the product for future reference.

### **Work Safety**

Compliance with the notes on safety can help to avoid personal injury and material damage when working on the machine. Failure to comply with these notes will cause a considerably risk of injury for persons and danger of damage or destruction of the machine. Non-compliance with the safety regulations causes the exclusion of any liability or compensation claims against the manufacturer or his representative.

### **Personal Safety Equipment**

In principle, the following is to be worn when working on or with the machine:

Protective working clothes. Tight fitting work clothing (minimal tear strength, no wide sleeves, no rings or other jewelers etc).

Safety gloves.

Safety boots for protection against heavy falling down objects and slipping on non-skid proof ground.

### **Safety Procedures**

The following safety information applies to the LASER 4.3-CP:

- The product is a Multi-Level car stacker; it may be different from other car stackers you have installed or used. Use it only for its intended purpose.
- Caution - the power unit operates at high pressure.
- The product may only be operated by authorized, trained persons.
- Capacity is 3000kg per platform. Do not exceed this capacity.
- When the car stacker is in use, keep all body parts well away from it.
- Do not make any modifications to the car stacker; this voids the warranty and increases the chances of injury or property damage.
- Prior to lifting vehicle, walk around the car stacker and check for any objects that might interfere with the operation of car stacker and safety latches; tools.
- When approaching the car stacker with a vehicle, make sure to center the vehicle between the columns. Slowly drive the vehicle up with someone outside the vehicle guiding the driver.
- Prior to lowering vehicle, walk around the lift and check for any objects that might interfere with the operation of lift and safety latches; tools.
- Make sure all operators read and understand this Installation and Operation Manual. Keep the manual near the car stacker at all times.
- Make an inspection of the car stacker before using it. Check for damaged, worn, or missing parts. Do not use it if you find any of these issues. Instead, take it out of service, then contact a Molnar service technician.

## **OPERATING PERSONNEL**

The device must only be operated and serviced by authorized, trained and instructed expert persons who:

- are at least 18 years of age and
- have been thoroughly instructed in operation and
- can provide evidence of their suitability to operate lifting platforms and
- have been entrusted in writing by the operating company to operate the lifting platform.

If personnel do not have the necessary knowledge, then they are to be trained accordingly. The equipment must only be operated and serviced by persons who are able to perform their work in a reliable manner. For this purpose, any mode of operation that adversely affects the safety of persons, the environment or the machine is to be avoided. Persons who are under the influence of drugs, alcohol or medication that affects their responsiveness may under no circumstances carry out work on or with the machine.

The employment of personnel must be based on the applicable regulations concerning age and qualification.

The responsibilities concerning operation and maintenance must be clearly specified in order to avoid uncertainties in competence.

The operator must ensure that unauthorized persons keep a sufficient clearance to the equipment.

## **BEHAVIOR IN CASE OF ACCIDENTS**

### **Preventative Measures**

- Always be prepared for accidents or fire!
- Keep first aid equipment (first aid kit, blankets, etc.) and firefighting equipment close to hand.
- Make personnel familiar with the location and use of safety, accident reporting, first aid and rescue equipment and have this training confirmed.
- Clear access routes for rescue vehicles.

### **If Worst Comes to the Worst: Do the Right Things!**

- Shut down the machine immediately.
- Inform the responsible person at the place of use.
- Alarm a physician and the fire brigade.
- Rescue persons from the danger zone, start first aid measures.
- Keep access routes for rescue vehicles clear.



## STRUCTURE AND FUNCTION

The car stacker is an electro-hydraulic 4 post surface-mounted car stacker.

The hoist consists of 2 pairs of posts connected with 4 cross beams. The 4 platforms rest on the cross beams.

Two platforms per top level and two platforms per lower level. Cross beams are raised and lowered by means of cables and a hydraulic cylinder placed under one platform per level.

The hydraulic pump unit and control box are placed on the front right post.

The hoist is operated by means of pushbuttons showing the selector switch UP, DOWN and LOCK functions with indicators. The pushbuttons are placed on the control box - see illustration below.



## Operation Instructions

**Operator must ensure all raised platforms are locked before leaving the car stacker. Vehicles must be in park and the park brake applied.**



### Raising Procedure:

1. Starting with both platforms fully lowered, drive the vehicle onto the upper platform.
2. Ensure the selector switch has the upper platform selected.
3. Vehicle must be in park and the park brake applied before pressing and holding the raise button until the platform is at its maximum height.
4. Select the lower platform with the selector switch.
5. Drive the second vehicle onto the lower platform. Vehicle must be in park and the park brake applied before raising to the maximum height.
6. Press and hold the lock button to lower the lower platform onto the locks.
7. Select the upper platform with the selector switch.
8. Press and hold the lock button to lower the upper platform onto the locks.

### Lowering Procedure:

1. Remove any vehicle in the floor bay.
2. Select the upper platform with the selector switch.
3. Raise the upper platform off the lock position into its maximum height position.
4. Select the lower platform with the selector switch.
5. Press and hold the down button to lower the platform to the floor and remove the vehicle.
6. Select the upper platform with the selector switch.
7. Press and hold the down button to lower the top platform to the floor and remove the vehicle.

Molnar does not take responsibility for accidents and/or damages caused by:

- Improper and non-observant operation of the equipment.
- Operation of the car stacker by un-authorized personnel

## Laser 4.3-CP - Car Stacker


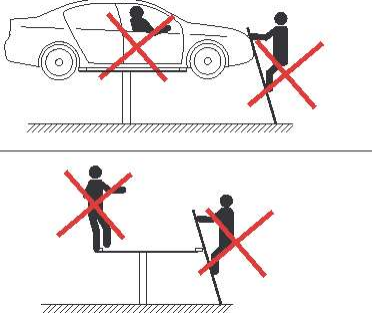
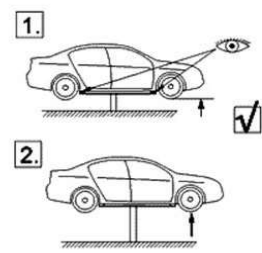
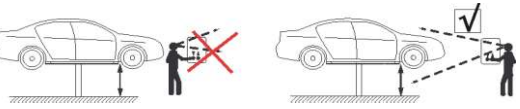
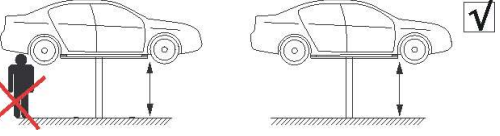
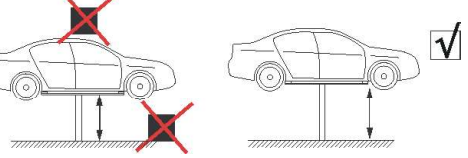
**SWL: 3000kg per Platform**

**Only to be operated by trained personnel in accordance with instructions described in the user manual.**

- ❖ Ensure pre-operation checks are carried out before use.
- ❖ Monitor vehicle, car stacker and area for obstructions and/or personnel before use and during operation.
- ❖ Load must be locked at all times, except when raising or lowering.
- ❖ Regular service and maintenance to be carried out as described in the user manual.
- ❖ Ensure vehicle weight is evenly supported, secure, stable and balanced.
- ❖ Vehicle must always be in park and the park brake must be applied and engine turned off when storing vehicles on the car stacker.
- ❖ For lifting vehicles only. Always use caution when lifting vehicles.
- ❖ Before using car stacker, read the detailed operating and safety instructions located in the user manual.
- ❖ This car stacker has been designed for indoor use only.
- ❖ Do not tamper with or modify car stacker controls, components or safety items.
- ❖ When the car stacker is not in use, switch off at the control box.
- ❖ Be aware of the height of the vehicle you are parking on the car stacker. Taller vehicles should be loaded onto the upper platform or floor space, not the middle bay/lower platform. Refer to the user manual for height measurements.
- ❖ If the lock button is pressed too long, cables can become slack. This can cause issues when attempting to lower the platform from a parked position. If required, press the raise button to take up the cable slack and then lower.

When lowering a platform from a locked position, it is normal that the platform will raise first before lowering. **This is a normal function of the car stacker.** When this occurs, continue to press the down button. This small raise is set on a timer, after 2-3 seconds the platform will begin to lower as long as the down button has been pressed for the full duration.

## INSTALLATION AND OPERATION INFORMATION

	<p>The lifting platform must only be operated by authorised persons. Strict compliance with the comprehensive operating manual is mandatory, especially in case of faults.</p>
	<p>Climbing up or standing on lifted load or loadbearing device is strictly prohibited.</p>
	<p>After slight initial lifting the operator must check that the load is correctly positioned on the load bearing device. Only then the load may be lifted further.</p>
	<p>Always keep an eye on load bearing device and load when moving the lifting platform.</p>
	<p>No persons must be in the movement range of load bearing device or load while the lifting platform is in motion.</p>
	<p>The movement range of load and load bearing device must be kept clear of any obstructions.</p>

### Installation

As agreed, initial installation of the equipment will be carried out by employees of the manufacturer or by Molnar service technician.

Unauthorized initial start-up is not permitted.

The machine is handed over to the customer following set-up, initial start-up and implementation of test runs by the manufacturer. After this the machine can be operated in strict compliance with the information in the operating instructions.

 **WARNING! Danger of injury!**

Installation may only be carried out by Molnar service technician while observing the safety instructions.

## PREVENTIVE MAINTENANCE



**DANGER** Before performing any maintenance on your Lift, make sure it is completely disconnected from power. If your organization has Lockout/Tagout policies, make sure to implement those procedures after connecting to the power source.

### WARNING!!!

Failure to perform the daily pre- operational check can result in expensive property damage, lost production time, serious personal injury, and even death. The safety lock system must be checked and working properly before the car stacker is put to use.

Failure to heed this warning can result in death or serious injury, or damage to equipment. **Do not use the car stacker if the Cables are damaged or extremely worn.** If you hear a noise not associated with normal car stacker operation, or, if there is any indications of impending car stacker failure - CEASE OPERATION IMMEDIATELY! - Inspect, correct and/or replace parts as required.

### Daily Pre-Operation Check

- Check safety lock audibly and visually while in operation
- Check hydraulic connections, and hoses for leakage.
- Check cables connections bends, cracks-and for loose fittings.
- Check for frayed cables in both raised and lowered position.
- Check bolts, nuts, and screws and tighten if needed.
- Check wiring & switches for damage.
- Check floor for stress cracks near columns.
- Check lubrications on cable sheaves and shafts.

### Weekly Maintenance

- Check floor for stress cracks near columns.
- Check hydraulic oil level.
- Check and tighten bolts, nuts, and screws.
- Check cable sheaves/assembly for free movement or excessive wear on sheave shaft.

### Yearly Maintenance

- Lubricate the cable sheave shaft by using grease gun at least once a year after the car stacker is in service.
- Check for excessive wear of cable. Replace them if necessary.

## MAINTENANCE



### **Safety**

#### **WARNING! Danger of injury!**

Improperly performed maintenance work can lead to severe physical injury or damage to property. Any work related with care and maintenance must only be carried out by qualified and authorized expert personnel.

Strictly observe when performing maintenance work:

- Switch off the system and secure against switching on again.
- Perform work only with the device stopped.
- Secure movable parts against unintended movement.
- See paragraph "Personal safety equipment"



#### **WARNING! Poisoning hazard!**

Lubricants are harmful to health! Skin damage (rashes, inflammation, allergies, etc.) can occur on contact of skin with oils and lubricating greases.

Therefore:

- Please observe instructions and safety data sheets from the manufacturer!
- Lubricants are not to be consumed or swallowed. In case of unintended consumption seek medical advice immediately (bring along the packing).
- When handling lubricants, use suitable skin protective and skin-care products or oil-resistance gloves.
- Rinse any spatters in the eye immediately with a lot of water!
- If the skin is dirtied by any lubricants, wash off immediately with soap and water.



#### **WARNING! Danger of injury!**

Lubricants which fall on the ground are a source of danger as they present a risk of slipping. Lubricants are to be adsorbed and removed by spreading sawdust or oil adsorption and afterwards scrapped according to local environment regulation.

## Maintenance Checks

### 4 weeks after installation

- Post installation service replace oil.
- Adjust cables.
- Inspect and check car stackers.

### Check Daily

- Check lock assemblies to see that they function properly.
- Visual inspection of car stackers: cylinder & hoses for oil leaks/cables/structure/switches

### Check Monthly

- Safety mechanism operation.
- Condition of pulleys and pins.
- Condition of cables.
- Overall cleanliness.

### Check Six Monthly

- Oil leaks from the cylinder, pipe joints and anchor bolts
- Cables
- Cables must be inspected by a **COMPETENT** person. (Cables are considered a wear and tear item and not subject to the regular 3 year warranty)
- Inspect for wear, rust and broken wires.

### Yearly

Service and safety inspection on hoist shall be performed by a competent person. This inspection must be recorded. If the 12 monthly service and safety inspection is not performed, the warranty is null and void.

**NOTE:** 10 Year service must include removal of pulleys to inspect and clean bushes.

### 2 Yearly

Hydraulic oil should be replaced (irrespective of the amount of use to which the hoist is subjected). Fill Hydraulic Tanks to oil level line with ISO 46 Hydraulic oil. (I.e. Castrol Hyspin AWH 46)

---

## Lubrication

### Pulleys

All pulleys shall be greased **monthly**. This includes the four transverse beam pulleys as well as the front and rear pairs of pulleys under the platform. (Pulley pins are supplied with grease nipples for easy greasing, i.e. Castrol SpheroL LMM Grease).

### Cables

Cables shall be lubricated **at least every six months**. This extends the life of the cable and helps protect against rust. (i.e. Lanotec Heavy Duty Lanolin Spray)

---

## SPECIAL MAINTENANCE TASKS

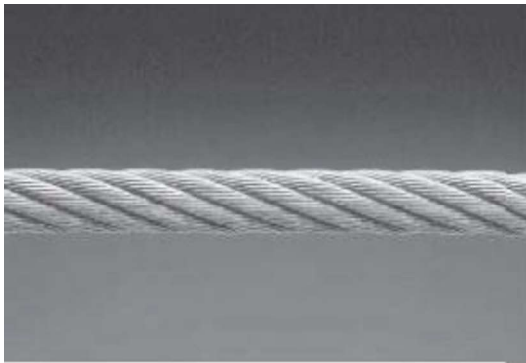
NOTE: The following items should only be performed by a trained maintenance expert:

- Replacement of hydraulic hoses.
- Replacement of cables and pulleys.
- Replacement or rebuilding hydraulic cylinders as required.
- Replacement or rebuilding motors as required.
- Checking of hydraulic cylinder rod and rod end (threads) for deformation or damage.

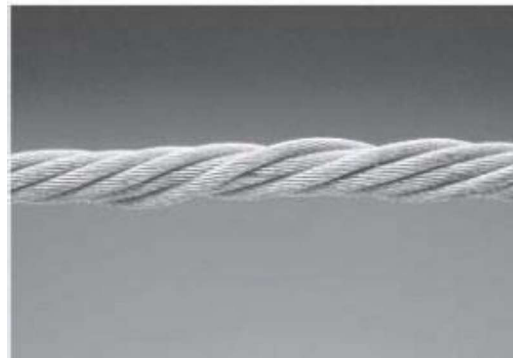
### CAUTION!!

Relocating or changing components may cause problems. Each component in the system must be compatible; an undersized or restricted line will cause a drop in pressure. All valve and hose connections should be sealed and/or capped until just prior to use. Most important is cleanliness; Contamination is the most frequent cause of malfunction or failure of hydraulic equipment.

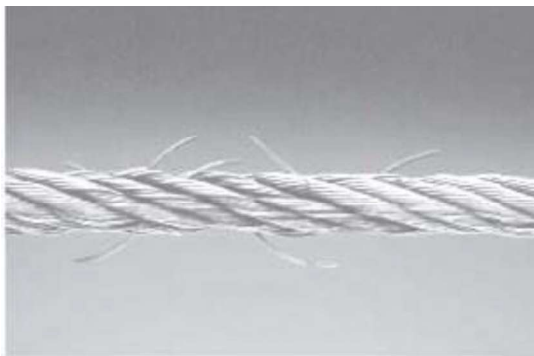
## Cable Inspection Guide



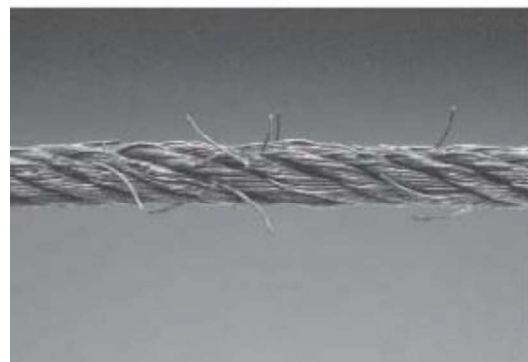
Typical Good Cable



Cable with Necking



Cable with Broken Wires



Cable with Severe Corrosive



## **CABLES INSPECTION & MAINTENANCE**

Inspect cables in both lowered and raised position. Check all the following:

1. That cables have no broken wires visible, reference Daily Inspection & Maintenance.
2. That cables are free of severe corrosion and pitting, a light surface corrosion on exposed

Outer wires is normal. Penetrating Oil should be applied during monthly periodic inspection.

3. That there are no areas on the cable that have a greatly reduced diameter or “necking”, When any cable is found with excessive necking, all cables must be replaced immediately.
4. That cables do not have excessive stretch. It is normal for new cable to require adjustment during “break-in”, after which small periodic adjustments may be required. However, if a cable that has been in service for 6 months should suddenly require frequent adjustments or has used all the cable adjustment available, all cables must be replaced immediately.
5. If any cable is found to be in need of replacement, the entire cable set must be replaced immediately.
6. Cables are expendable items and should be replaced as a set every 20,000 cycles (estimated) or every 6 years, unless earlier replacement is indicated during inspection.

## **PULLEYS AND PINS INSPECTION**

1. Inspect pulleys, pins and runways. Pulleys are expendable items. Pulleys and pins should be replaced when worn. Use of pulleys and pins with excessive wear will lead to reduced service life of cables.
2. Inspect pulleys with lift in lowered position or resting on the locking latches.
  - a While lift in lower position, pull on cable in column to create slack in cables.
  - b Check for excessive side to side wobble. Grasp rim of pulley and attempt to wobble side to side. If pulleys wobble more than 4.8 mm side to side or move up and down on shaft more than 0.8 mm, the pulley and pin (shaft) should be replaced.
  - c Check pulley and replace if cracks are found.
  - d Check for ease of rotation. If pulleys do not turn freely, the pulley and pulley pin should be removed, inspected, lubricated, and reinstalled or replaced.
3. Fully raise lift. Inspect pulleys in runway ends with lift in raised position.
  - a Visually inspect alignment of pulleys, Misalignment of pulley(s) indicates excessive wear; the pulley (s) and pulley pin should be removed and inspected. Replace as required.
  - b Check for excessive side to side wobble. Grasp rim of pulley and attempt to wobble side to side. If pulleys wobble more than 1.6 mm side to side, or move in and out more than 0.8mm, the pulley and pulley pin (shaft) should be replaced.

## **HYDRAULIC CYLINDER INSPECTION**

Inspect the hydraulic cylinder mounting to the Drive Platform. Inspect cylinder and hydraulic hoses for leaks. Repair or replace as required. Check and tighten the hydraulic cylinder rod nuts holding the drive pulley box.

**CLEANING**

Cleaning of hoists helps prevent corrosion damage.

Corrosive fluids such as brake fluid, oil, fuel or other solvents must be wiped off immediately, otherwise damage will occur to the coating.

Special attention must be paid to the corrosive effect of salt in autumn and winter periods. The cleansing agents must not have any abrasive effect, nor contain solvents.

The hoist must be cleaned at least once a week.

The hoist must be cleaned with a non-corrosive cleansing agent. Clean and wipe the hoist according to the following scheme:

When:	Where:	How:	Remarks:
Every week	Platforms	Clean and wipe	
	Drive-on ramps		
	Posts / base plates		
	Cross beams		

The manufacturer does not accept any claim concerning the paint peeling off or corrosion damages caused by missing or insufficient cleaning or maintenance.

Repair of damages:

Repair of damages on the coating must be carried out immediately in order to minimize the extent of the repair.

The damages will typically be:

Damages which do not affect the metal surface but affects the coating itself Damages going down into the metal surface.

Repairs:

Contact the manufacturer for guidance. Please state RAL number of paint.

## TROUBLE SHOOTING

This section describes how to troubleshoot your car stacker. In case of a breakdown, check the following points:

- Electricity cut.
- Main circuit breaker
- Electric motor.
- Obstruction under car stackers



**WARNING** If your car stacker is not functioning correctly, you must take it out of service until it is fixed. **All repair work must be done by qualified personnel.**

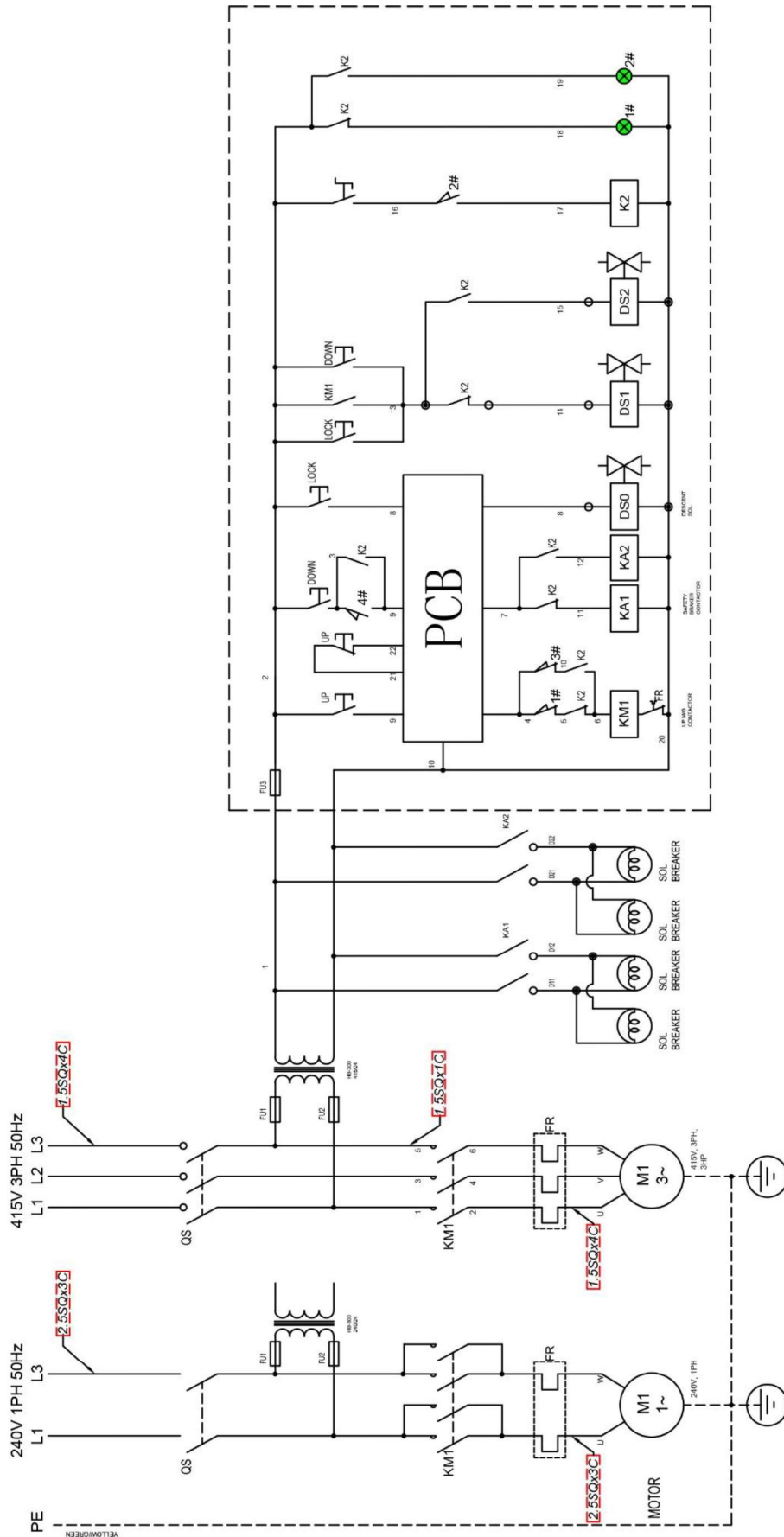
Do not start repairing the car stacker until the main switch has been cut off.

Do not disconnect the safety system and do not operate the car stacker after breakdown and prior to repair.

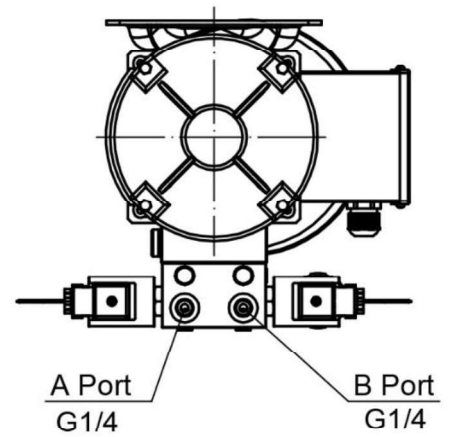
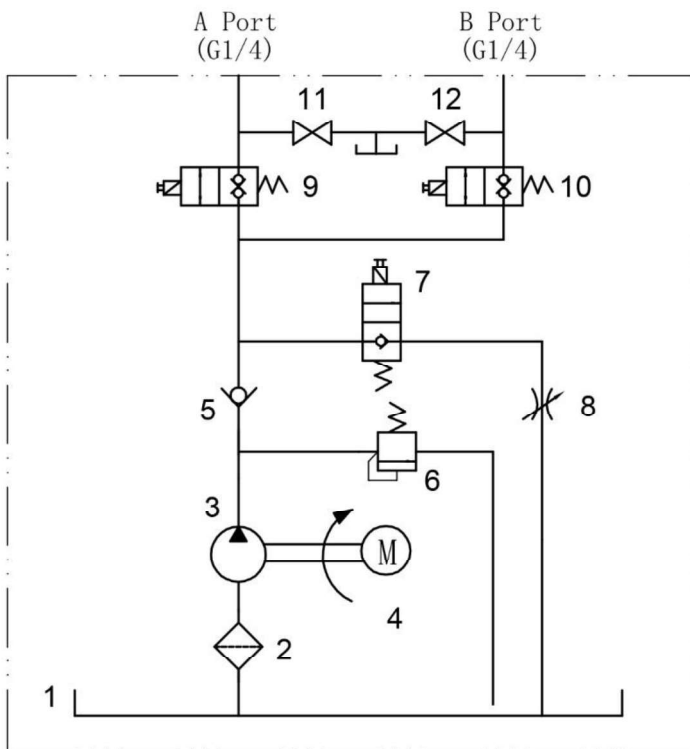
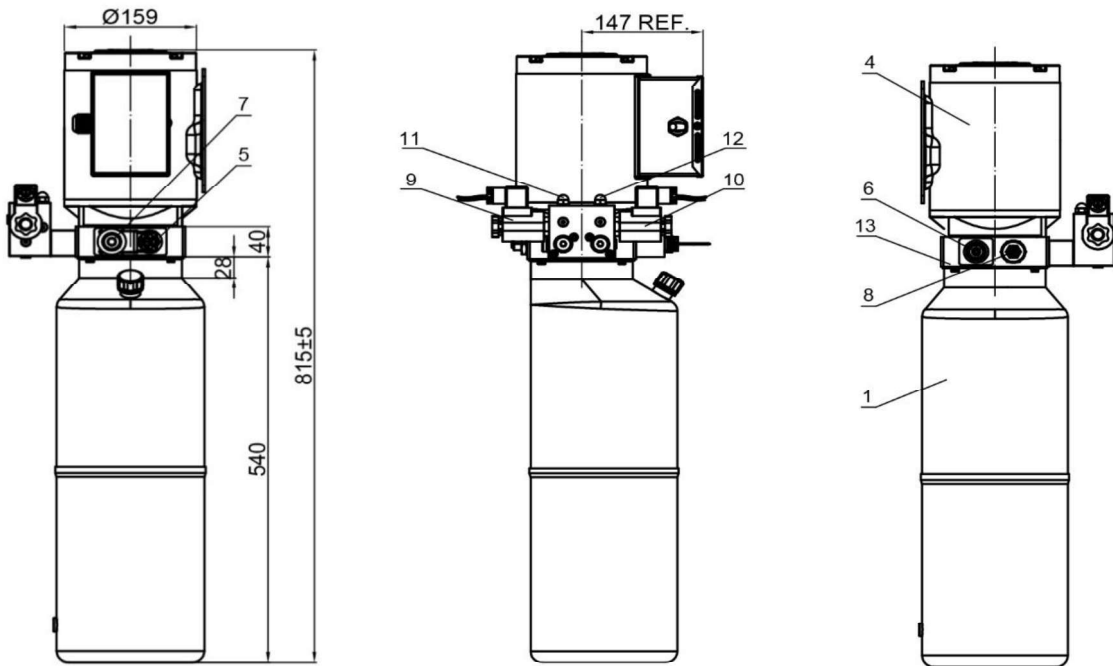
Faulty Description	Causes	Remedy
Motor Does Not Operate	No incoming Power	Check & make sure breaker was on
	Defective button	Call electrician for service
	Motor faulty	Call electrician for replacement
Pump Unit cannot start	Electric failure	Check fuses.
	Incorrect electric connections	Call authorized electrician
	Fault in control box	
	Faulty electric motor	
	Defective pushbutton	Replace
Pump unit delivers none or insufficient pressure	Pump defective	Replace pump
	Air in hydraulic system	Lower platforms to bottom position without load and keep pressing DOWN-button for approx. 20 sec
	Non-return valve or oil pressure relief valve defective (internal in pump unit)	Call authorized service technician
Oil leakage	High pressure hose defective	Replace hose
	Leaks at fittings	Tighten
	Cylinder seals defective	Replace or repair cylinder
Platforms no longer horizontal when hanging in cables under load	One or several cables stretched	Adjust cables

Platforms no longer horizontal when resting on the ratchets	Incorrect adjustment	Adjust platforms and cross beams until they are horizontal. Slacken nut under top plate for rail. Raise or lower ratchet rails as required by means of adjustment bolts in top of posts. After adjustment tighten lock nut under top plate for rail. Ratchet rails should preferably be adjusted to lowest possible position.
Ratchets are not released regardless of parking height	Power source failure	Cure fault
	Lock solenoid failure	Replace lock assembly
	Platforms are not lifted free from ratchet rails	Raise a little and lower.
	One ratchet binding	Let an assistant operate UP button so that lift ascends in small jerks. Meanwhile pull ratchet free manually. Use pliers or grips.
Unusually high noise level	Defective solenoid valve	Replace solenoid valve
	Pump worn	Replace pump
	Overloaded	Max. load - see decals
	Seal in high pressure cylinder defective	Replace or repair cylinder
	Incorrect post position	Reposition posts according to installation instructions
Car Stacker cannot ascend	Oil pressure release valve out of adjustment	Adjust relief valve to correct setting.
	Overloading	Max. load - see decals
Car Stacker cannot descend	Insufficient pressure from pump unit	See pump information above
	Pump does not start	See pump info above
Car Stacker cannot reach topmost position	One or more of the ratchets still activated	Free from ratchet rails before lowering
	Insufficient oil in tank	Fill up oil tank
Platform descends when ratchets are not engaged	Incorrect cable adjustment (too long)	Adjust cable
	Leaks in hydraulic system	See above oil leakage info
Platform descends when ratchets are not engaged	Lowering valve/ non-return valve leaking (internal in the pump unit)	Call Molnar service technician

### LASER 4.3-CP Multi-Level Car Stacker Single and Three Phase Wiring Diagram



## Schematic Diagram of Power Unit



Subject: Schematic Diagram Of Power Unit	
Drawing No:	Part No: YBZ5-F2.1E6H30/ACBIN1

Item No	Part Number	Description	Qty	Specifications
1	4.3CP-M-1	Oil Tank	1	YBZ-E2E1-1-02 14L
2	4.3CP-M-2	Filter	1	YBZ-E2D3I1/1-10
3	4.3CP-M-3	Gear Pump	1	CBKA-F2.1F 2.1cc/r
4	4.3CP-M-4	Motor	1	AM13-6HAC-3BA1 415V,2.2KW,50HZ,2850RPM
5	4.3CP-M-5	Check Valve	1	DF08-01-00
6	4.3CP-M-6	Overflow Valve	1	YF08-40 20MPa
7	4.3CP-M-7	Solenoid Valve	1	LSV2-08-2NCP-M-2H 24VDC
8	4.3CP-M-8	Throttle Valve	1	JLF-M20x1.5
9/10	4.3CP-M-9	Solenoid Valve	2	LSV2-08-2NCSP-LM-2H 24VDC
11/12	4.3CP-M-12	Pressure Relief Screw	2	YBZ5-F2.14H30A/ACOBN1-03
11	4.3CP-M-11	Pump Base	1	LBZ-N2FK-1

### Cable Arrangement

