



MOLNAR

By NEXION



CM245-AS

Spare Parts List

ALWAYS KEEP
operating instructions
ready to hand on the
unit

Read the operating
instructions before
working with the
unit

Date:

09.10.2022

**Before
taking into operation
check system compo-
nents, control, emer-
gency stop and safety
equipment for condi-
tion, damage and
correct function!**

Please read this manual before you get started.

You must read and understand the precautions for safety purposes and any damages that may occur to your property.

If these installation instructions are not followed strictly, the hoist is not covered by warranty.

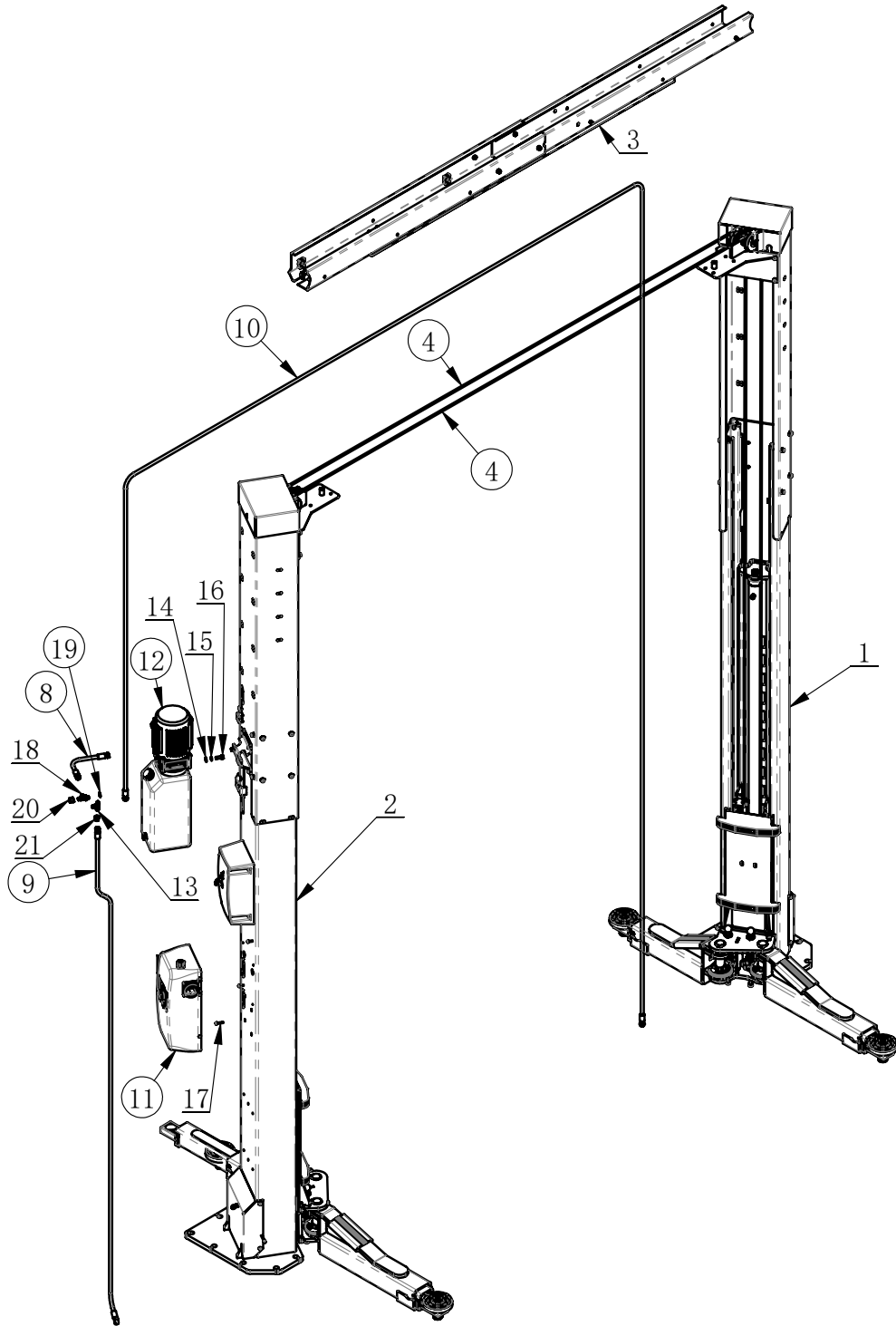


Address:	3 Graham Street Export Park South Australia 5950
Ph:	+61 (08) 8234 3611
Fax:	+61 (08) 8234 4322
Email:	sales@molnarhoists.com.au
Web:	www.molnarhoists.com.au

Specifications/images subject to change without prior notice, Images and sketches are for illustration purposes only.

All circled position numbers are recommended spare parts

J214BZ-1000000



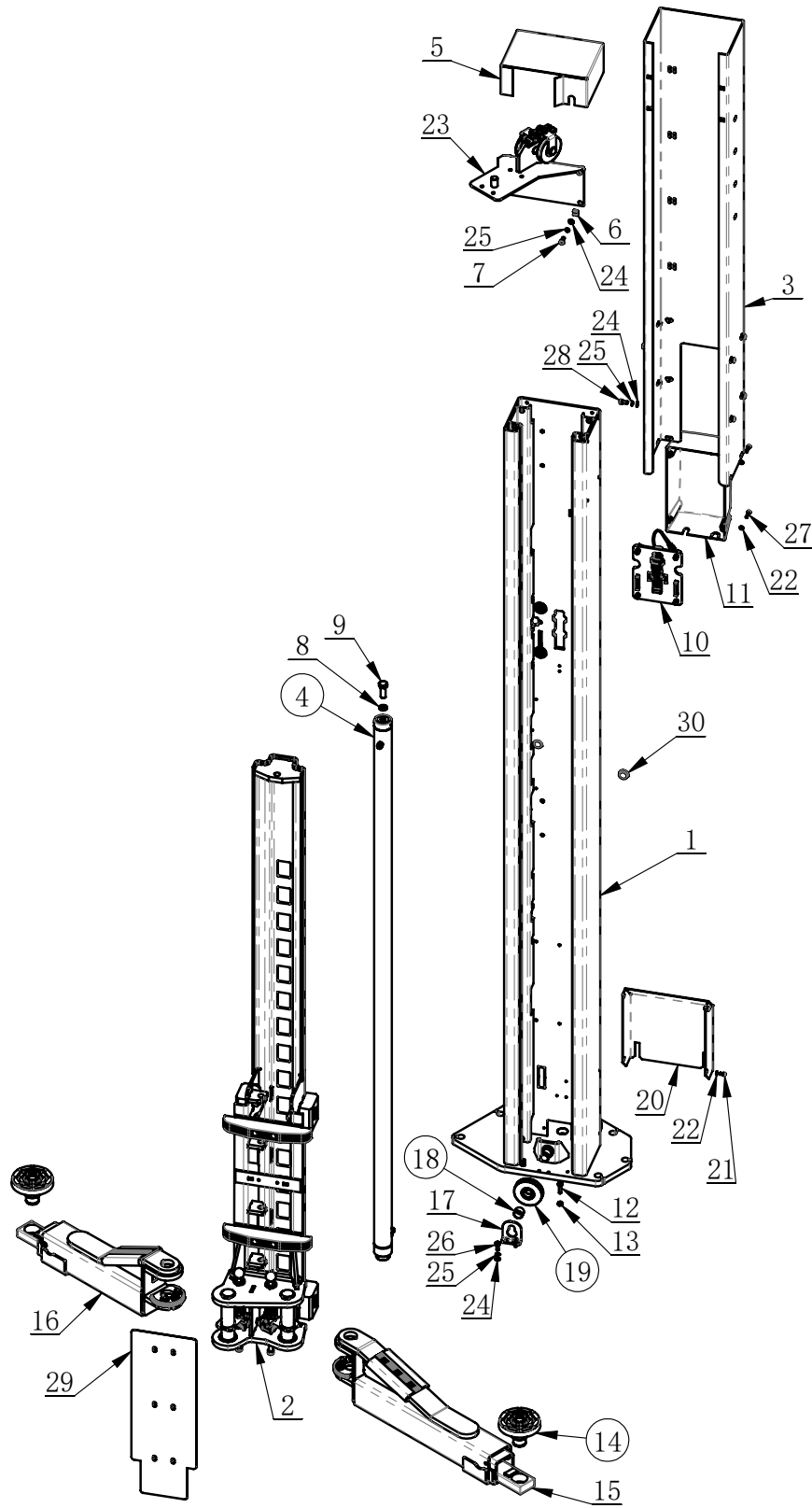
All cirplaced position numbers are recommended spare parts

J213-1000000.

ITEM	PART. No	DESCRIPTION	QT. Y
1	J213-1100000	L. H COLUMN	1
2	J213-1200000	R. H COLUMN	1
3	J213-1300000	OVERHEAD BEAM	1
4	J213-1080006	CABLE	2
8	J213-1141000	POWER UNIT HOSE	1
9	J213-1150000	SHORT HOSE	1
10	J213-1140000	OVER HEAD HOSE	1
11	J233-1800000	CONTROL BOX	1
12	J101-1190000	HPU	1
13	AB-04	T-Hydraulic Connection	1
14	GB95-10	FLAT WASHER	2
15	GB93-10	STANDARD SPRING WASHER	2
16	GB5781-M10×25	HEXANGULAR BOLT	2
17	GB70. 1-M6×25	INNER HEXA CYLINDRICAL SCREW	4
18	ABBG-040G	T-Hydraulic Connection	1
19	JB982-13	COMBINED PAD	1
20	9B-04	Tubing plug	1
21	J101-2000011	INNER CONE PLUG	2

All circled position numbers are recommended spare parts

J213-1100000.



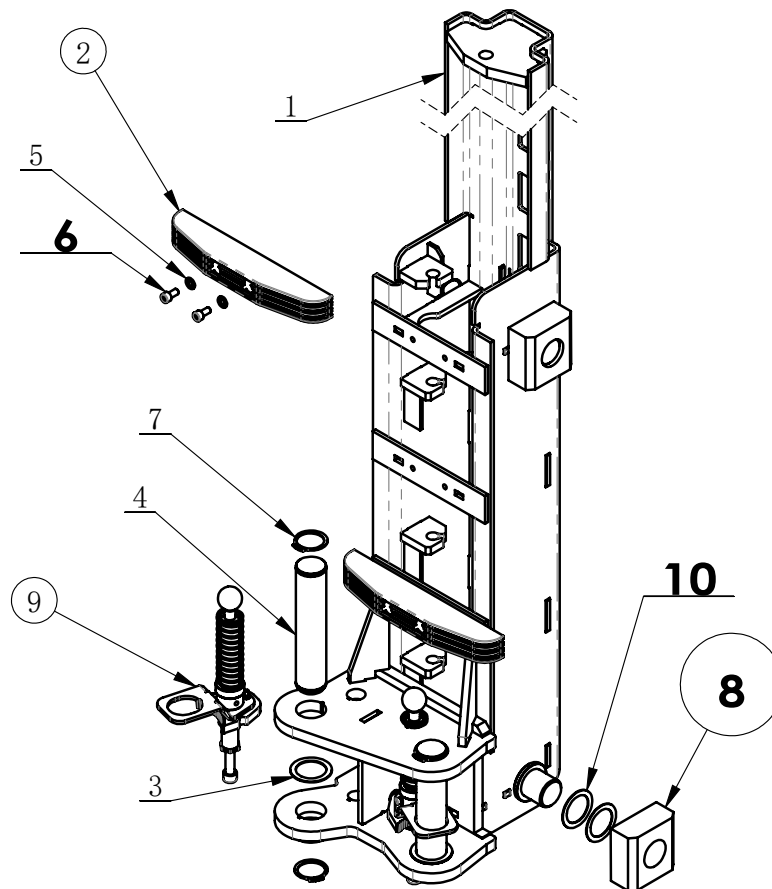
All cirplaced position numbers are recommended spare parts

J213-1100000.

ITEM	PART. No	DESCRIPTION	QT. Y
1	J213-1001000	COLUMN WELDMENT	1
2	J213-1040000	PULLEY ASSEMBLY	1
3	J213-1110100	COLUMN EXTENSION	1
4	J213-1070000	CYLINDER	1
5	J213-1100003	COVER	1
6	B-76-1400004	CLIP NUT	4
7	GB70. 1-M8×20	INNER HEXA CYLINDRICAL SCREW	4
8	GB93-16	STANDARD SPRING WASHER	1
9	GB5783-M16×40	HEXANGULAR BOLT	1
10	J108-1060000	SAFETY LOCK ASSEMBLY	1
11	J101-1000060	ELECTROMAGNETIC COVER	1
12	GB5783-M8×30	HEXANGULAR BOLT	2
13	GB6170-M8	HEXANGULAR NUT 1-TYPE	2
14	J101-1054000	LIFTING PADS ASSEMBLY	2
15	J213-1050000	ARM COMPONENTS	1
16	J108-1050000	ARM COMPONENTS ONE	1
17	J213-1100017	ROLLER BRACKET	1
18	GB12613-25X28X20	SLIDER BEARING	1
19	J213-1100011	SHEAVE	1
20	J213-1000022	PORTECTIVE COVER	1
21	GB70. 1-M6×10	INNER HEXA CYLINDRICAL SCREW	4
22	GB95-6	FLAT WASHER	8
23	J213-1103200	MOUNTING BRACKET	1
24	GB95-8	FLAT WASHER	18
25	GB93-8	STANDARD SPRING WASHER	18
26	GB5783-M8×20	HEXANGULAR BOLT	2
27	GB70. 1-M6×25	INNER HEXA CYLINDRICAL SCREW	4
28	GB70. 1-M8×16	INNER HEXA CYLINDRICAL SCREW	12
29	J213-1000018	Cover plate	1
30	J101-1000030	RUBBER STOPPER	2

All circled position numbers are recommended spare parts

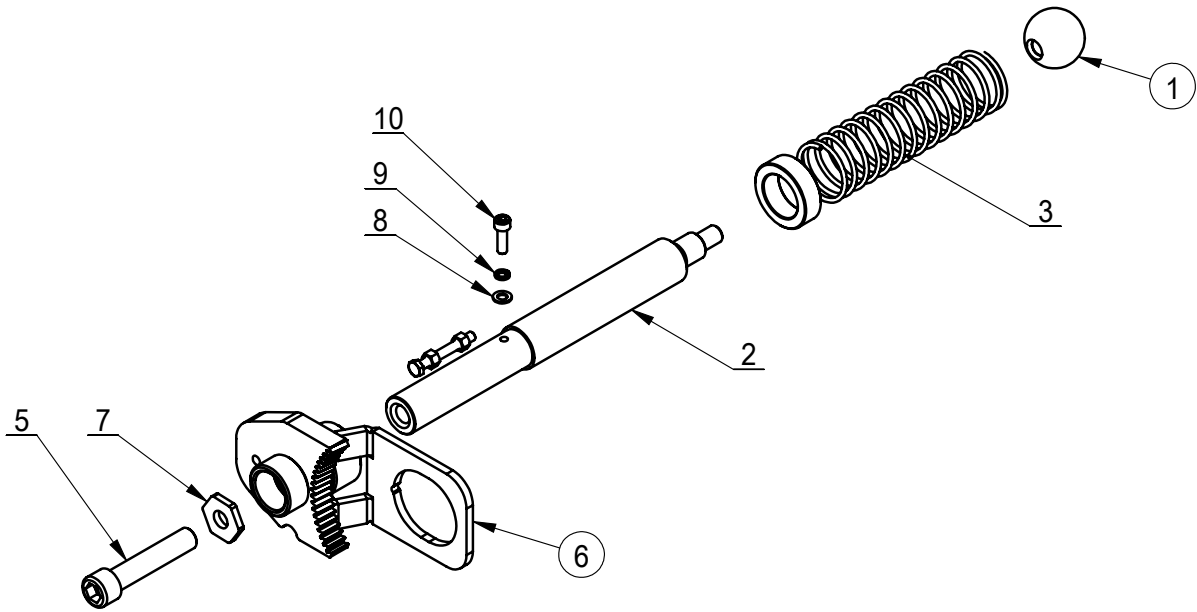
J213-1040000.



ITEM	PART. No	DESCRIPTION	QT. Y
1	J213-1041000	CARRIAGE	1
2	J101-1000003	PROTECTIVE RUBBER	2
3	J101-1040002	ADJUSTABLE PAD OF SLIDING BLOCK	5
4	J108-1040011	ARM SHAFT	2
5	GB95-8	FLAT WASHER	4
6	GB70. 1-M8×16	INNER HEXA CYLINDRICAL SCREW	4
7	GB894. 2-40	SHAFT ELATIC RETAINING RING B-TYPE	4
8	J101-1040001	NYLON SLIDING BLOCK	4
9	J213-1042000	LOCK SHAFT ASSEMBLY	2
10	J101-1040003	ADJUSTABLE PAD OF SLIDING BLOCK	8

All circled position numbers are recommended spare parts

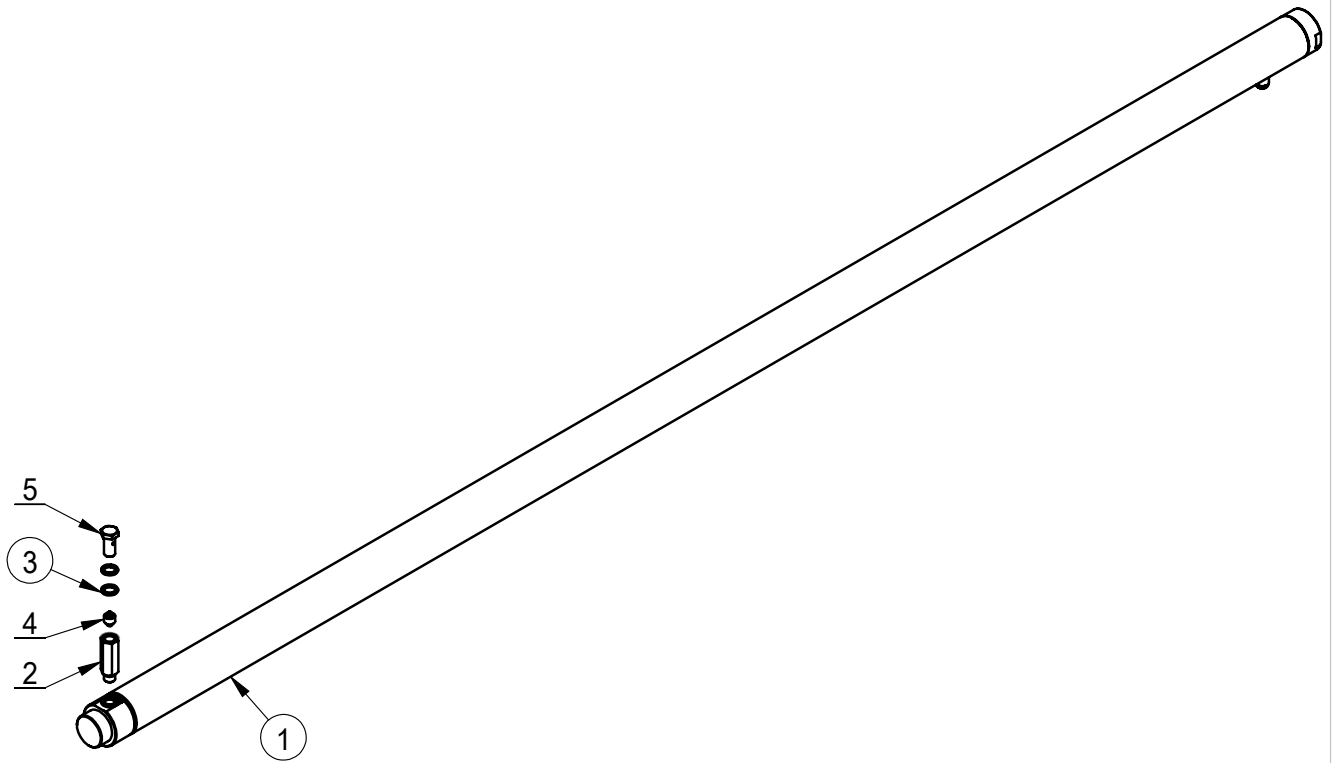
J213-1042000.



ITEM	PART.No	DESCRIPTION	QT.Y
1	MH-12-1360011	HAND SHANK	1
2	J108-1110001	LOCK SHAFT	1
3	J101-1110003	COMPRESSED SPRING OF GEAR LOCK	1
4	J101-1110004	BUSHING	1
5	GB70.1-M12×60	INNER HEXA CYLINDRICAL SCREW	1
6	J108-1110100	LOCKING GEAR	1
7	J108-1110002	LOCK NUT	1
8	GB95-5	FLAT WASHER	1
9	GB93-5	STANDARD SPRING WASHER	1
10	GB70.1-M5×16	INNER HEXA CYLINDRICAL SCREW	1
11	GB5781-M5×40	HEXANGULAR BOLT	1
12	GB41-M5	HEXANGULAR NUT	2

All cirplaced position numbers are recommended spare parts

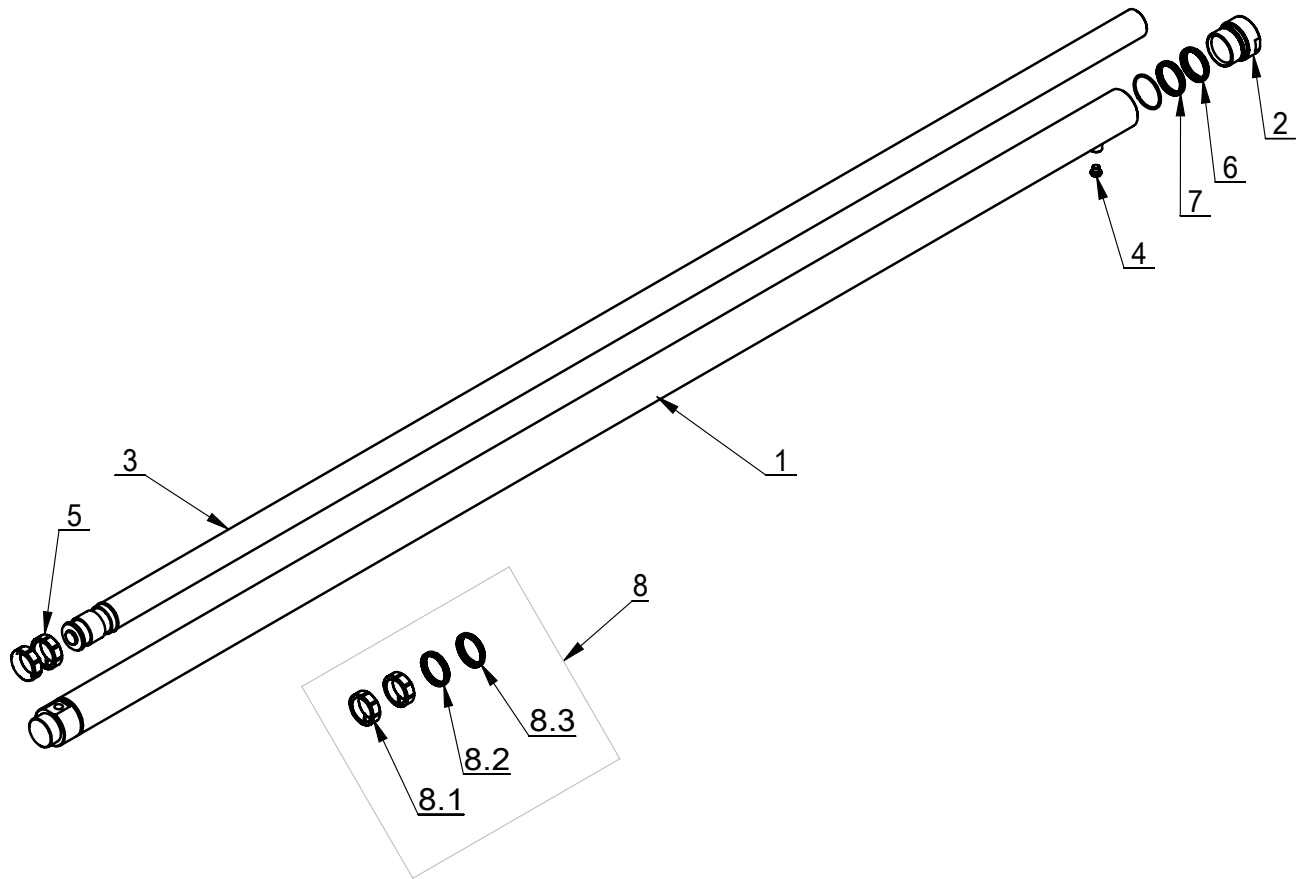
J213-1070000.



ITEM	PART.No	DESCRIPTION	QT.Y
1	J213-1071000.	CYLINDER	1
2	J101-1140011	JOINT	1
3	JB982-13	COMBINED PAD	3
4	J101-1143000	HOSE PARACHUTE VALVE	1
5	J101-1140005	BRITISH MADE HINGE BOLTS	1

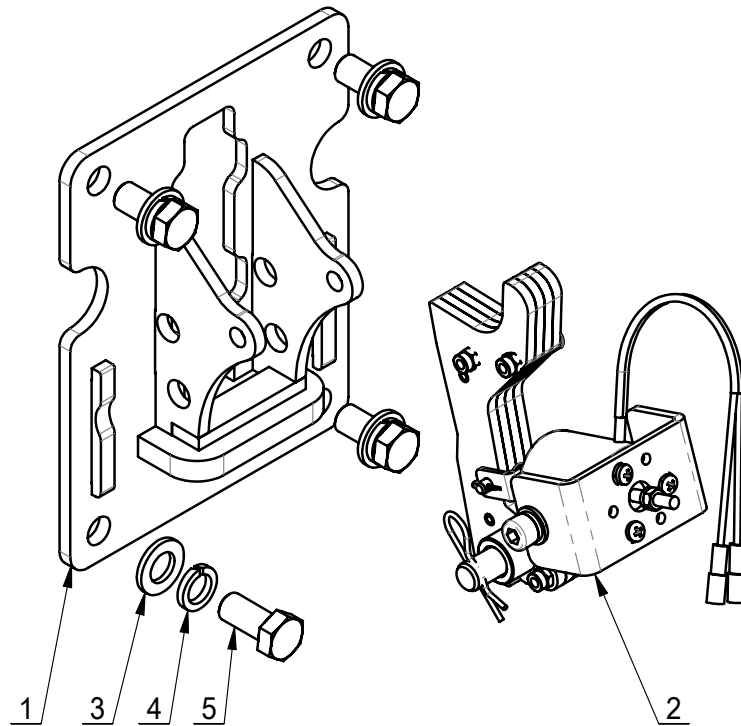
All cirplaced position numbers are recommended spare parts

J213-1071000.



ITEM	PART.No	DESCRIPTION.	QT.Y
1	J213-1071100	CYLINDER TUBE	1
2	J213-1071002	END CUP	1
3	J213-1071001	PISTON ROD	1
4	4B-02	JOINT	1
5	5000836	POSTON SUPPORT RING	2
6	5000855	DUST RING	1
7	30106	SHAFT SEAL RING	1
8	J213-1071000MFJ.	SEAL RING SET	1
8.1	5000836	POSTON SUPPORT RING	
8.2	30106	SHAFT SEAL RING	
8.3	5000855	DUST RING	

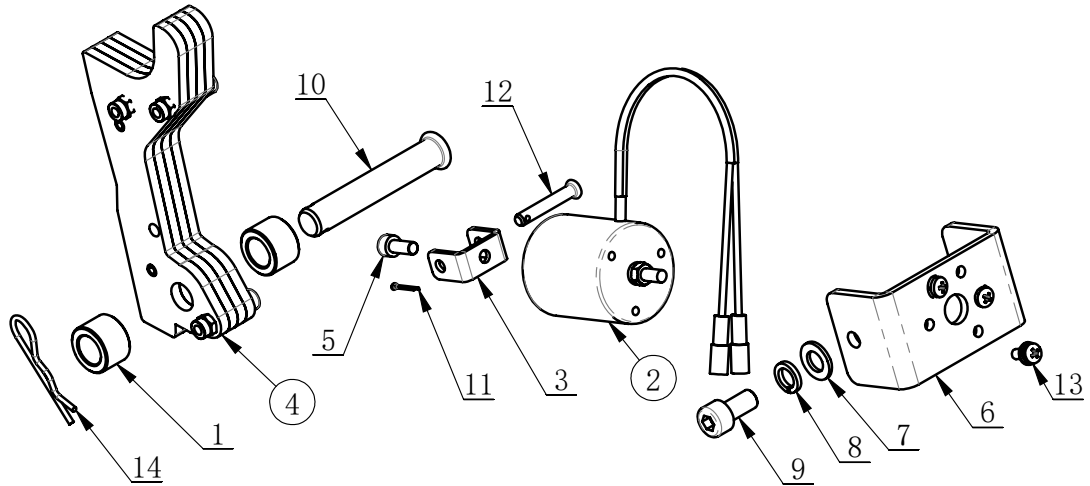
J108-1060000.



ITEM	PART.No	DESCRIPTION	QT.Y
1	J108-1060100	LOCK SET PLATE	1
2	J108-1061000	SAFTY LOCK ASSEMBLY	1
3	GB95-12	FLAT WASHER	4
4	GB93-12	STANDARD SPRING WASHER	4
5	GB5783-M12×25	HEXANGULAR BOLT	4

All cirplaced position numbers are recommended spare parts

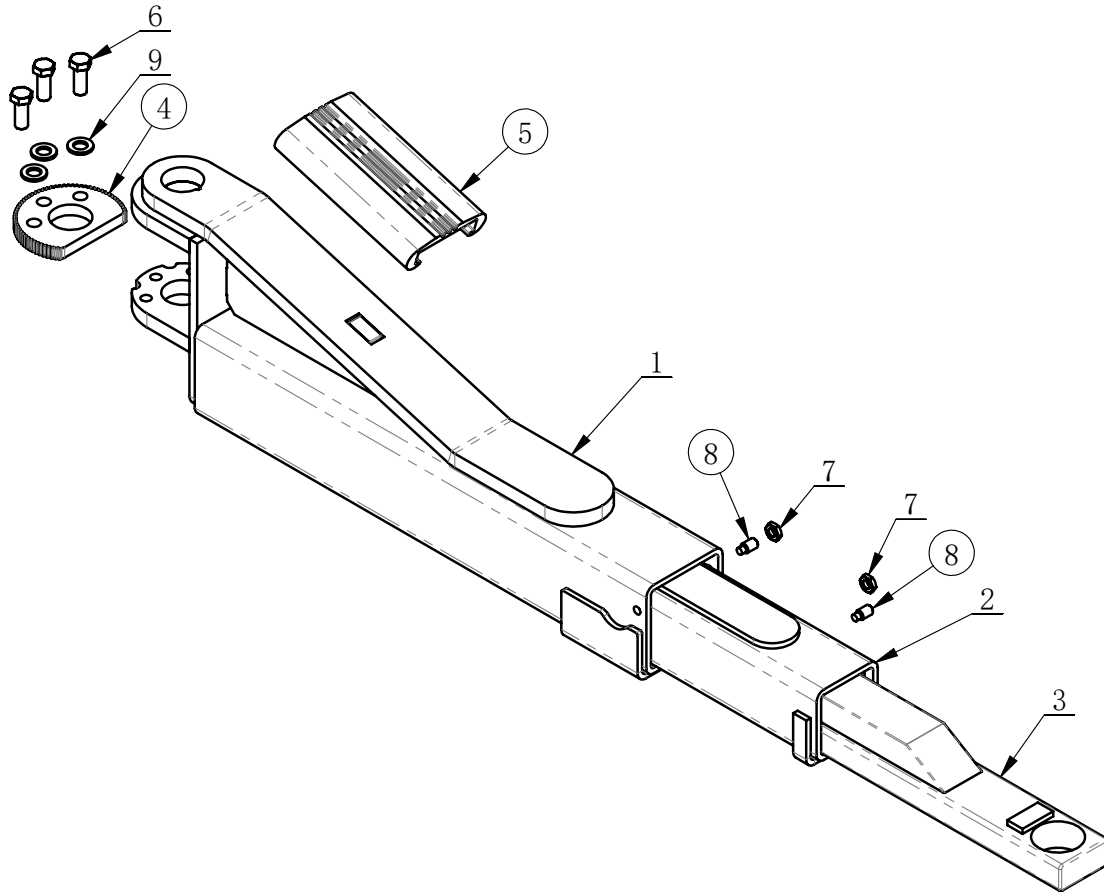
J108-1061000.



ITEM	PART. No	DESCRIPTION	QT. Y
1	J113-1060002	LOCK PLATE SPACER	2
2	J113-1060003	TRACTION ELECTROMAGNETIC	1
3	J113-1060004	ELECTROMAGNETIC U SHAPE FRAME	1
4	J108-1061100	LOCKING LATCH	1
5	GB70.1-M5×12	INNER HEXA CYLINDRICAL SCREW	1
6	J113-1063004	ELECTROMAGNETIC BENDING PLATE	1
7	GB95-8	FLAT WASHER	2
8	GB93-8	STANDARD SPRING WASHER	2
9	GB70.1-M8×16	INNER HEXA CYLINDRICAL SCREW	2
10	GB882-12×70	PIN SHAFT	1
11	GB91-1.6×10	SLOTTED PIN	1
12	GB882-5×30	PIN SHAFT	1
13	GB9074.4-M4×10	COMBINATION SCREW	3
14	J101-1000025	R-SHAPE PIN	1

All circled position numbers are recommended spare parts

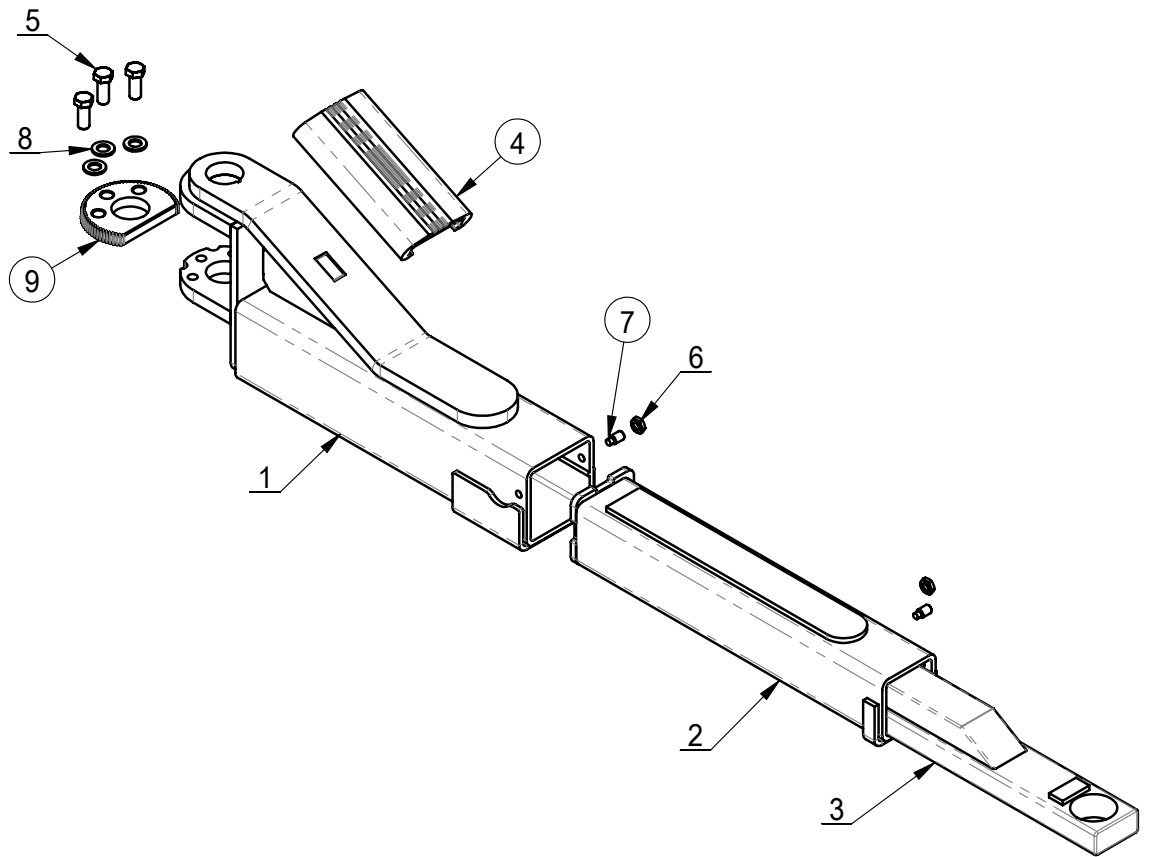
J213-1050000.



ITEM	PART. No	DESCRIPTION	QT. Y
1	J213-1051000	STEP ARM	1
2	J213-1052000	STEP ARM	1
3	J213-1053000	LAST STEP ARM	1
4	J108-1050001	GEAR BLOCK	1
5	J101-1050002	PROTECTIVE RUBBER	1
6	GB5783-M12×30	HEXANGULAR BOLT	3
7	GB6172. 1-M10	HEXANGULAR THIN NUT	2
8	GB79-M10×20	INNER HEXA CYLINDRICAL TERMINUS SET SCREW	2
9	GB95-12	FLAT WASHER	3

All cirplaced position numbers are recommended spare parts

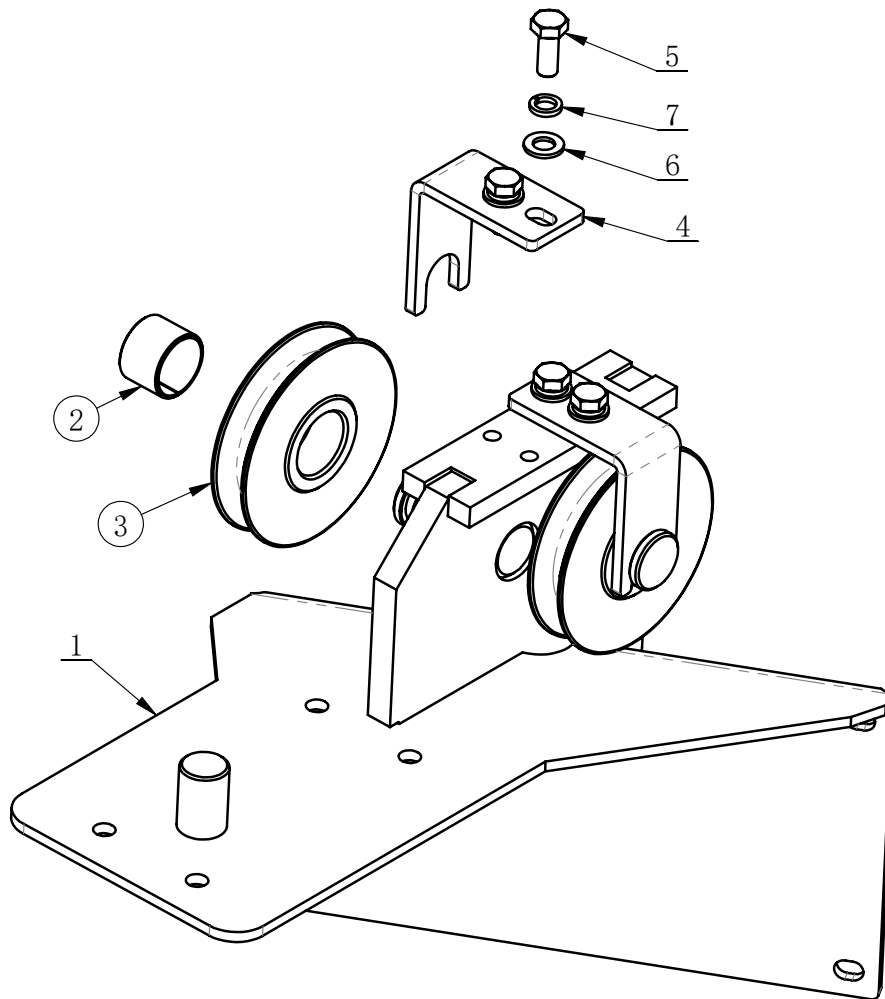
J108-1050000.



ITEM	PART.No	DESCRIPTION	QT.Y
1	J108-1051000	STEP ARM	1
2	J108-1052000	STEP ARM	1
3	J108-1053000	LAST STEP ARM	1
4	J101-1050002	PROTECTIVE RUBBER	1
5	GB5783-M12×30	HEXANGULAR BOLT	3
6	GB6172.1-M10	HEXANGULAR THIN NUT	2
7	GB79-M10×20	INNER HEXA CYLINDRICAL TERMINUS SET SCREW	2
8	GB95-12	FLAT WASHER	3
9	J108-1050001.	LOCK GEAR	1

All cirplaced position numbers are recommended spare parts

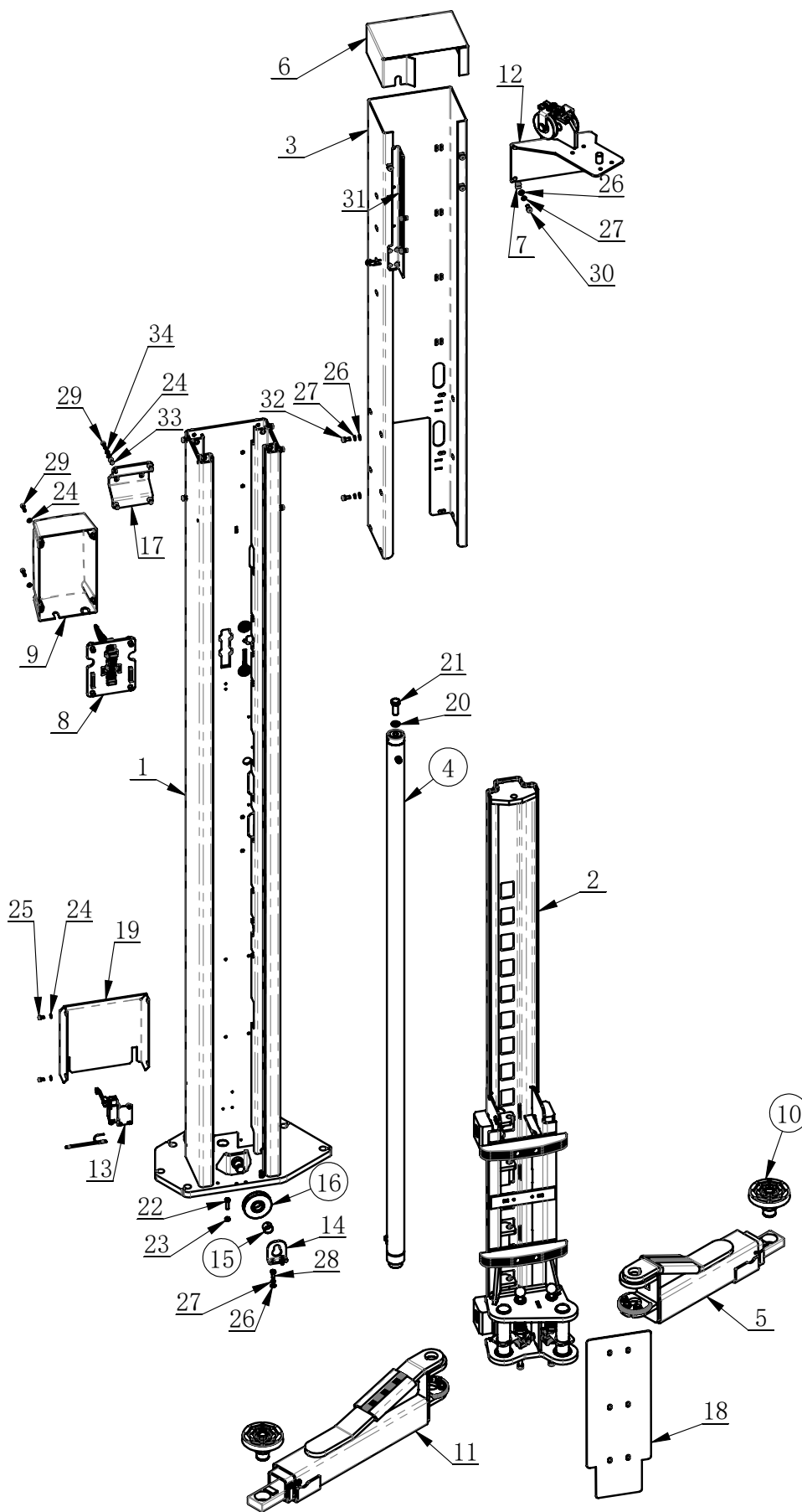
J213-1103200.



ITEM	PART. No	DESCRIPTION	QT. Y
1	J213-1100200	BRACKET	1
2	GB12613-25X28X20	SLIDER BEARING	2
3	J213-1100011	SHEAVE	2
4	J213-1103201	LIMITE PIECE	2
5	GB5783-M8×20	HEXANGULAR BOLT	4
6	GB95-8	FLAT WASHER	4
7	GB93-8	STANDARD SPRING WASHER	4

All circled position numbers are recommended spare parts

J213-1200000.



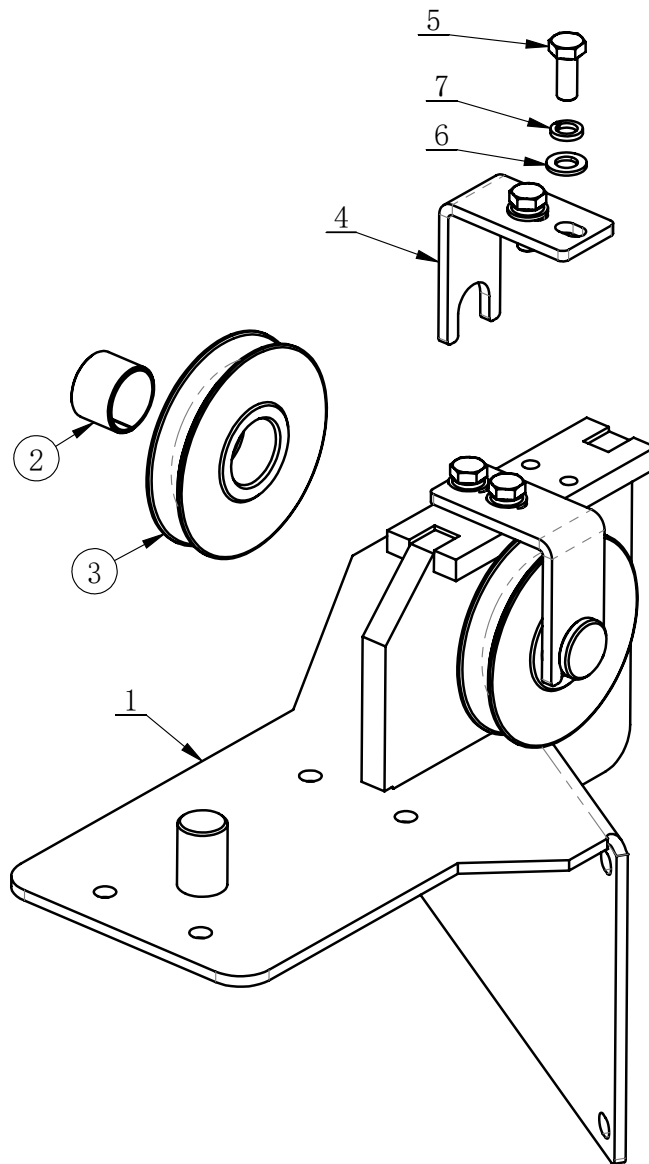
All cirplaced position numbers are recommended spare parts

J213-1200000.

ITEM	PART. No	DESCRIPTION	QT. Y
1	J213-1002000	COLUMN	1
2	J213-1060000	CARRIAGE ASSEMBLY	1
3	J213-1110100	COLUMN EXTENSION	1
4	J213-1070000	CYLINDER	1
5	J108-1050000	ARM COMPONENTS ONE	1
6	J213-1200003	COVER	1
7	B-76-1400004	CLIP NUT	4
8	J108-1060000	SAFETY LOCK ASSEMBLY	1
9	J101-1000060	ELECTROMAGNETIC COVER	1
10	J101-1054000	LIFTING PADS ASSEMBLY	2
11	J213-1050000	ARM COMPONENTS	1
12	J213-1203200	MOUNTING BRACKET	1
13	J213-1210000	SAFT SWITCH ASSEMBLY	1
14	J213-1100017	ROLLER BRACKET	1
15	GB12613-25X28X20	SLIDER BEARING	1
16	J213-1100011	SHEAVE	1
17	J213-1000013	HPU BRACKET	1
18	J213-1000018	Cover plate	1
19	J213-1000022	PORTECTIVE COVER	1
20	GB93-16	STANDARD SPRING WASHER	1
21	GB5783-M16×40	HEXANGULAR BOLT	1
22	GB5783-M8×30	HEXANGULAR BOLT	2
23	GB6170-M8	HEXANGULAR NUT 1-TYPE	2
24	GB95-6	FLAT WASHER	12
25	GB70.1-M6×10	INNER HEXA CYLINDRICAL SCREW	4
26	GB95-8	FLAT WASHER	18
27	GB93-8	STANDARD SPRING WASHER	18
28	GB5783-M8×20	HEXANGULAR BOLT	2
29	GB70.1-M6×25	INNER HEXA CYLINDRICAL SCREW	8
30	GB70.1-M8×20	INNER HEXA CYLINDRICAL SCREW	4
31	J213-1000100	LIMITED SWITCH ASSEMBLY	1
32	GB70.1-M8×16	INNER HEXA CYLINDRICAL SCREW	12
33	GB17880.5-M6×18	FLAT HEXA RIVETTED NUT	4
34	GB93-6	STANDARD SPRING WASHER	4

All circled position numbers are recommended spare parts

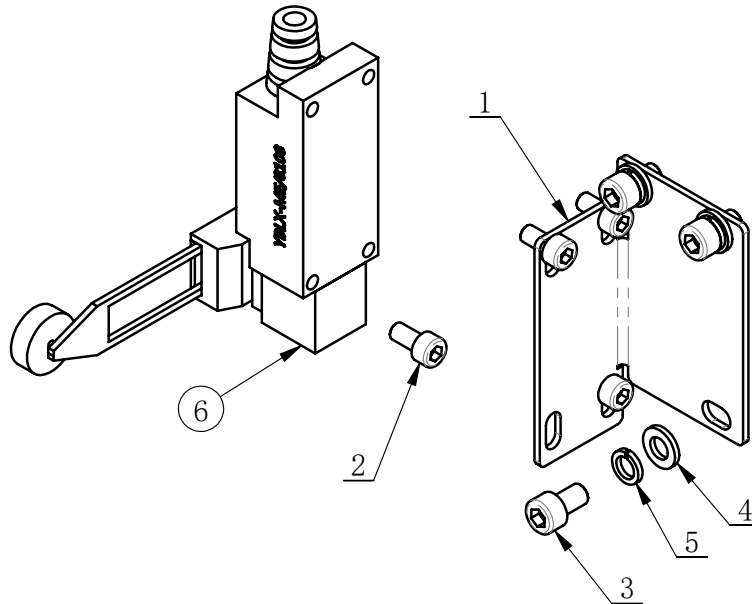
J213-1203200.



ITEM	PART. No	DESCRIPTION	QT. Y
1	J213-1200200	MOUNTING BRACKET	1
2	GB12613-25X28X20	SLIDER BEARING	2
3	J213-1100011	SHEAVE	2
4	J213-1103201	LIMITE PIECE	2
5	GB5783-M8×20	HEXANGULAR BOLT	4
6	GB95-8	FLAT WASHER	4
7	GB93-8	STANDARD SPRING WASHER	4

All circled position numbers are recommended spare parts

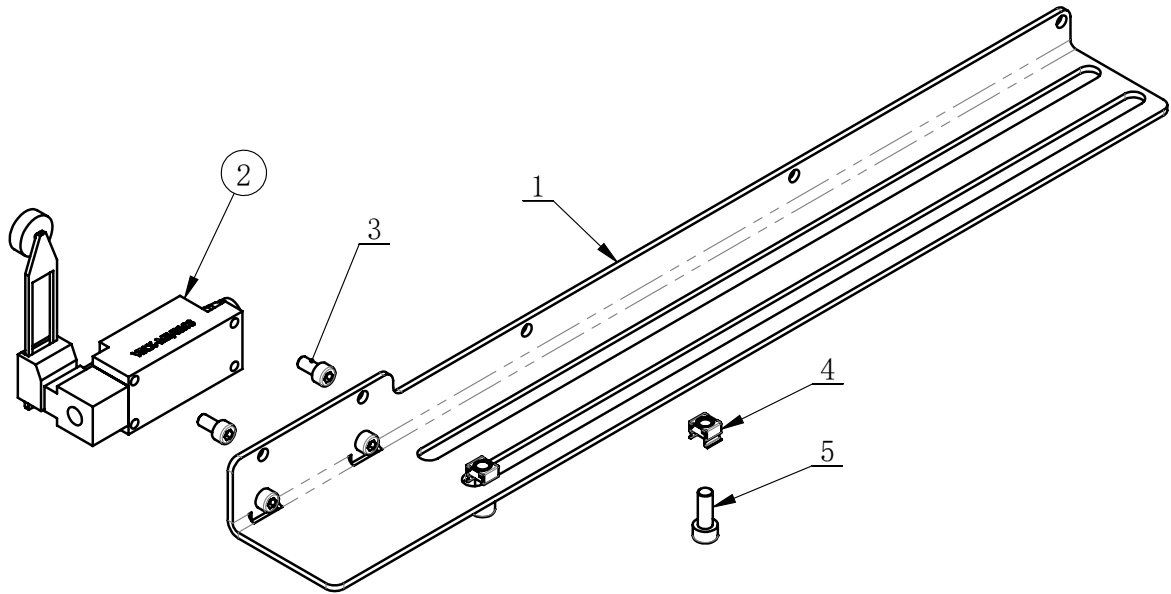
J213-1210000.



ITEM	PART. No	DESCRIPTION	QT. Y
1	J108-1002001	Bracket	1
2	GB70.1-M5×10	INNER HEXA CYLINDRICAL SCREW	4
3	GB70.1-M6×10	INNER HEXA CYLINDRICAL SCREW	3
4	GB95-6	FLAT WASHER	3
5	GB93-6	STANDARD SPRING WASHER	3
6	MH-12-1B00002	MICRO SWITCH	1

All cirplaced position numbers are recommended spare parts

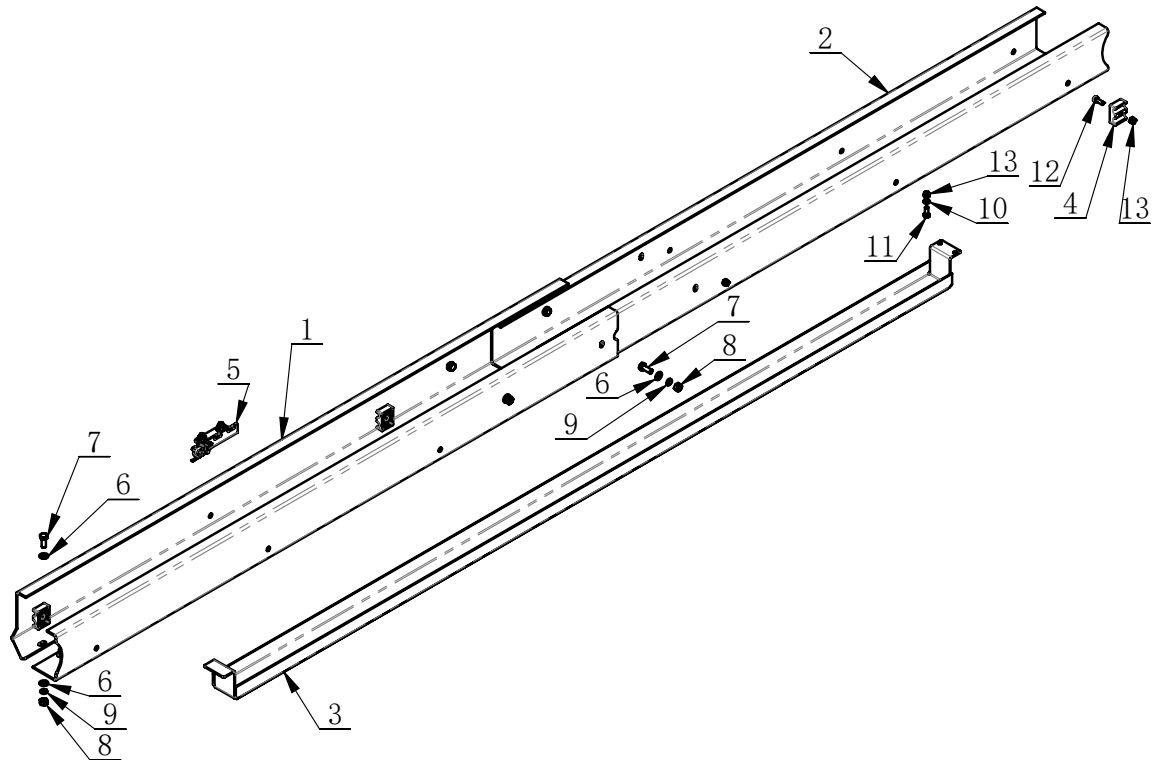
J213-1000100.



ITEM	PART. No	DESCRIPTION	QT. Y
1	J213-1000021		1
2	MH-12-1B00002	MICRO SWITCH	1
3	GB70. 1-M5×10	INNER HEXA CYLINDRICAL SCREW	4
4	B-61-1000014	CLIP NUT	2
5	GB70. 1-M6×16	INNER HEXA CYLINDRICAL SCREW	2

All cirplaced position numbers are recommended spare parts

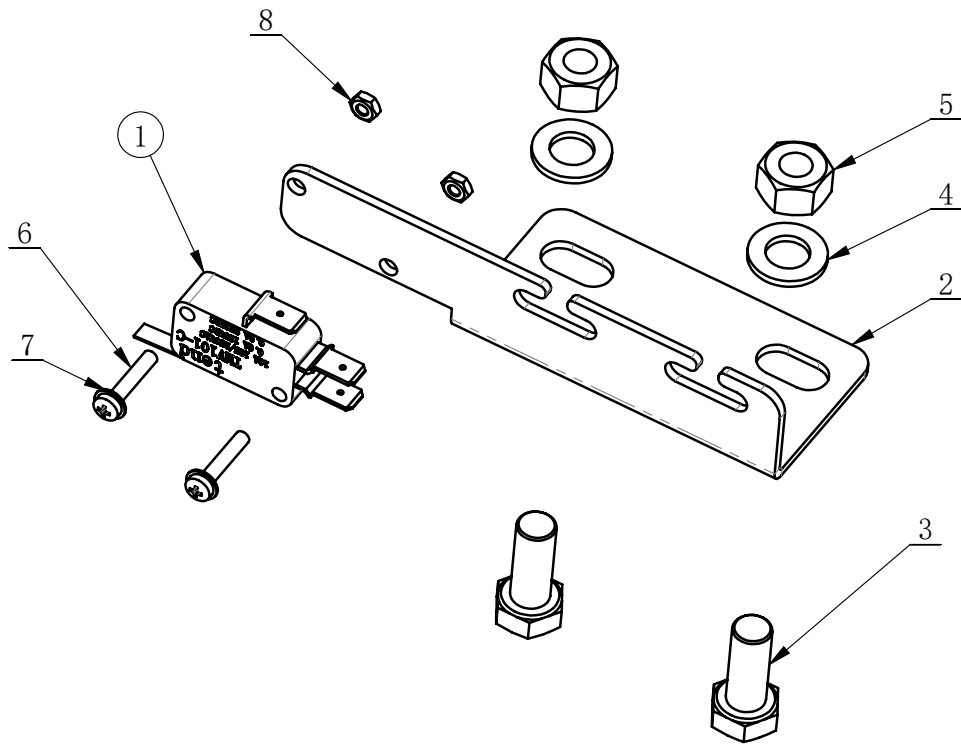
J213-1300000.



ITEM	PART. No	DESCRIPTION	QT. Y
1	J213-1300001	Outer cross member	1
2	J213-1300002	Inner cross member	1
3	J213-1300100	Anti collision beam	1
4	TC-40-1100003	PIPE CLAMP	4
5	J213-1300200	OVERHEAD BEAM	1
6	GB95-8	FLAT WASHER	32
7	GB5783-M8×20	HEXANGULAR BOLT	16
8	GB41-M8	HEXANGULAR NUT	16
9	GB93-8	STANDARD SPRING WASHER	16
10	GB95-6	FLAT WASHER	2
11	GB5783-M6×16	HEXANGULAR BOLT	2
12	GB70.1-M6×16	INNER HEXA CYLINDRICAL SCREW	4
13	GB889.1-M6	1-TYPE PREVAILING TORQUE TYPE HEXAGON LOCK NUT	6

All cirplaced position numbers are recommended spare parts

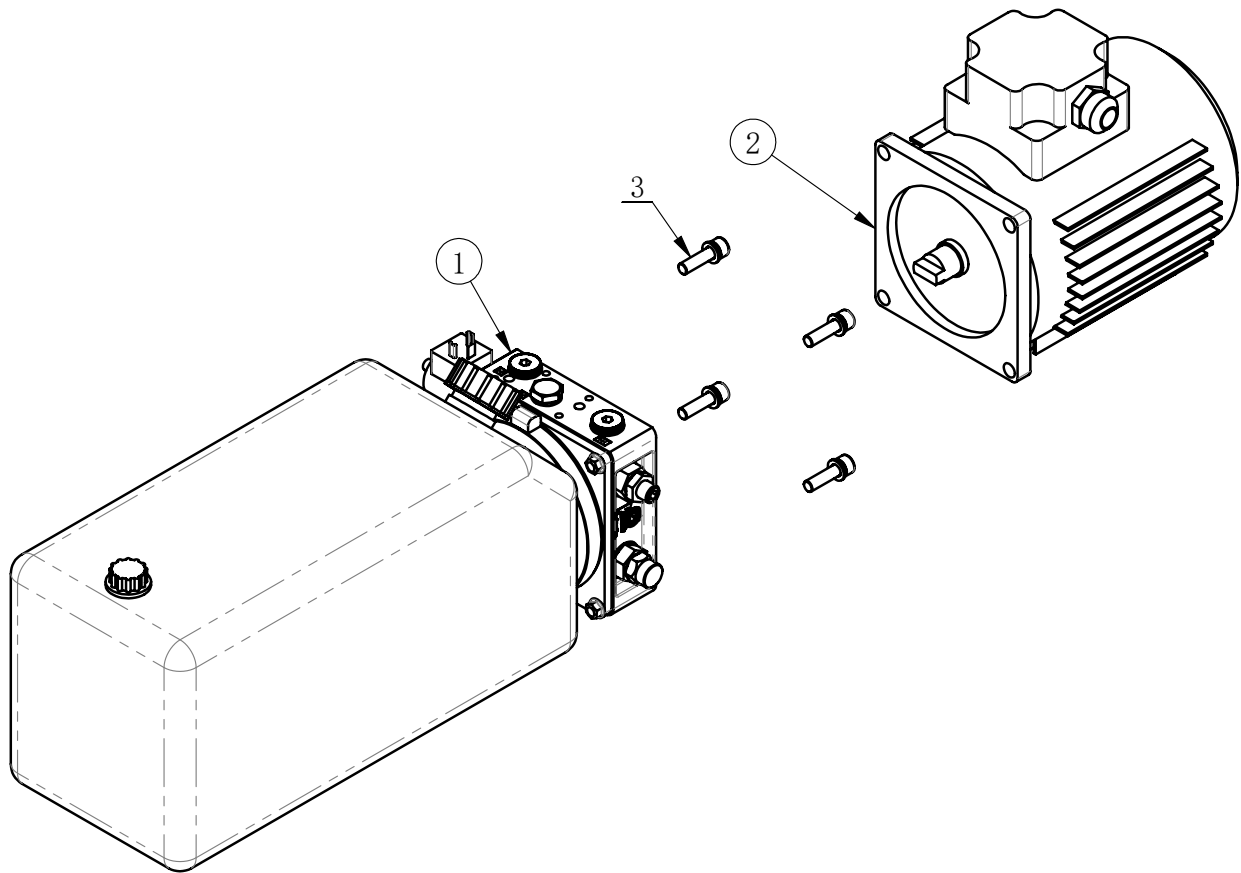
J213-1300200.



ITEM	PART. No	DESCRIPTION	QT. Y
1	J101-1150002	MICRO SWITCH	1
2	J213-1300003	Microswitch base	1
3	GB5783-M8×20	HEXANGULAR BOLT	2
4	GB95-8	FLAT WASHER	2
5	GB41-M8	HEXANGULAR NUT	2
6	GB818-M3×16-H	CROSS PANHEAD SCREW	2
7	GB95-3	FLAT WASHER	2
8	GB6170-M3	HEXANGULAR NUT 1-TYPE	2

All cirplaced position numbers are recommended spare parts

J101-1190000.



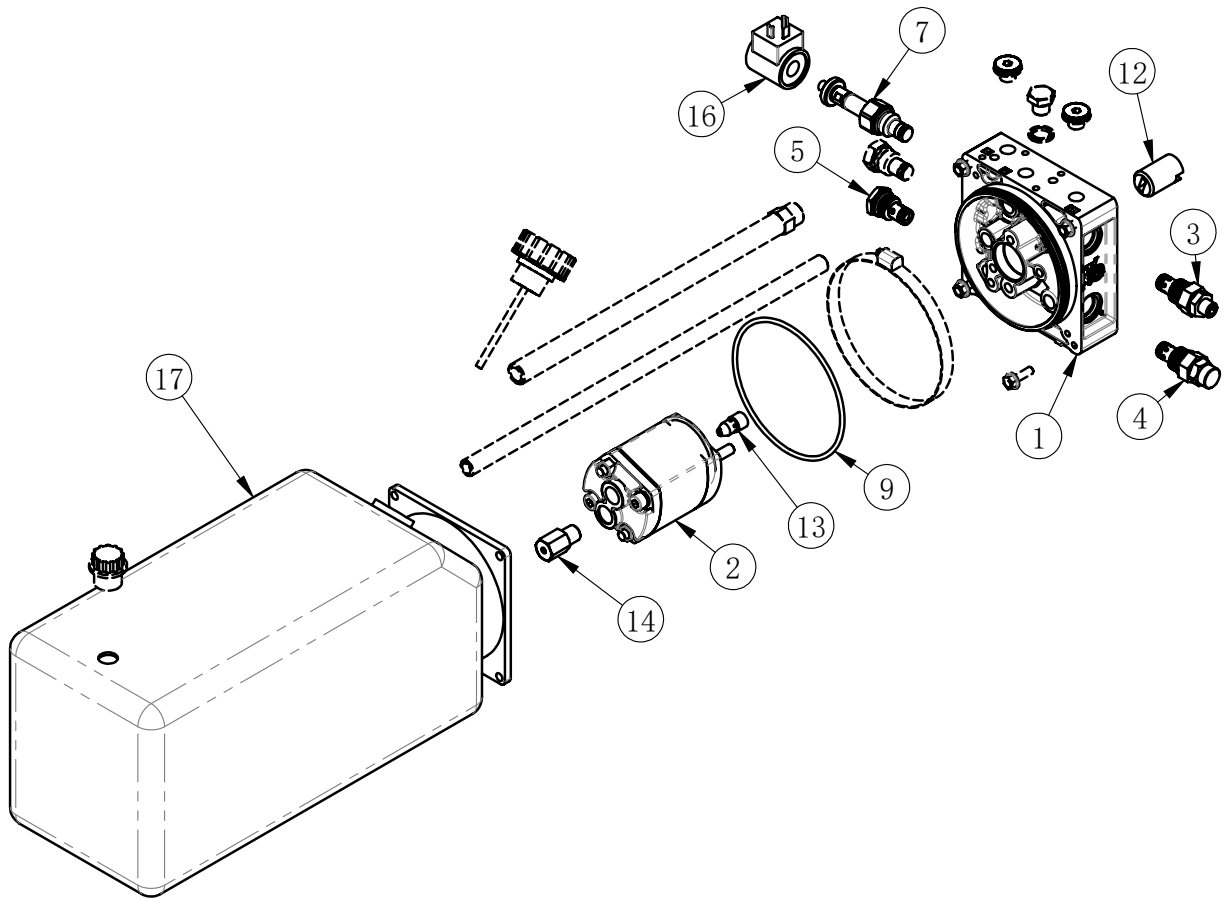
J101-1190000 (400V/3P)			
ITEM	PART. No	DESCRIPTION	QT. Y
1	J101-1132000	Hydraulic pump unit	1
2	J101-1131000	Electro Motor	1
3	GB9074-M8×25	COMBINATION SCREW	4

J101-1170000 (230V/50Hz/1P)			
ITEM	PART. No	DESCRIPTION	QT. Y
1	J101-1181000	Hydraulic pump unit	1
2	J101-1501001	Electro Motor	1

J101-1200000 (230V/60Hz/1P)			
ITEM	PART. No	DESCRIPTION	QT. Y
1	J101-1260000	Hydraulic pump unit	1
2	J101-1501002	Electro Motor	1

All cirplaced position numbers are recommended spare parts

J101-1132000.



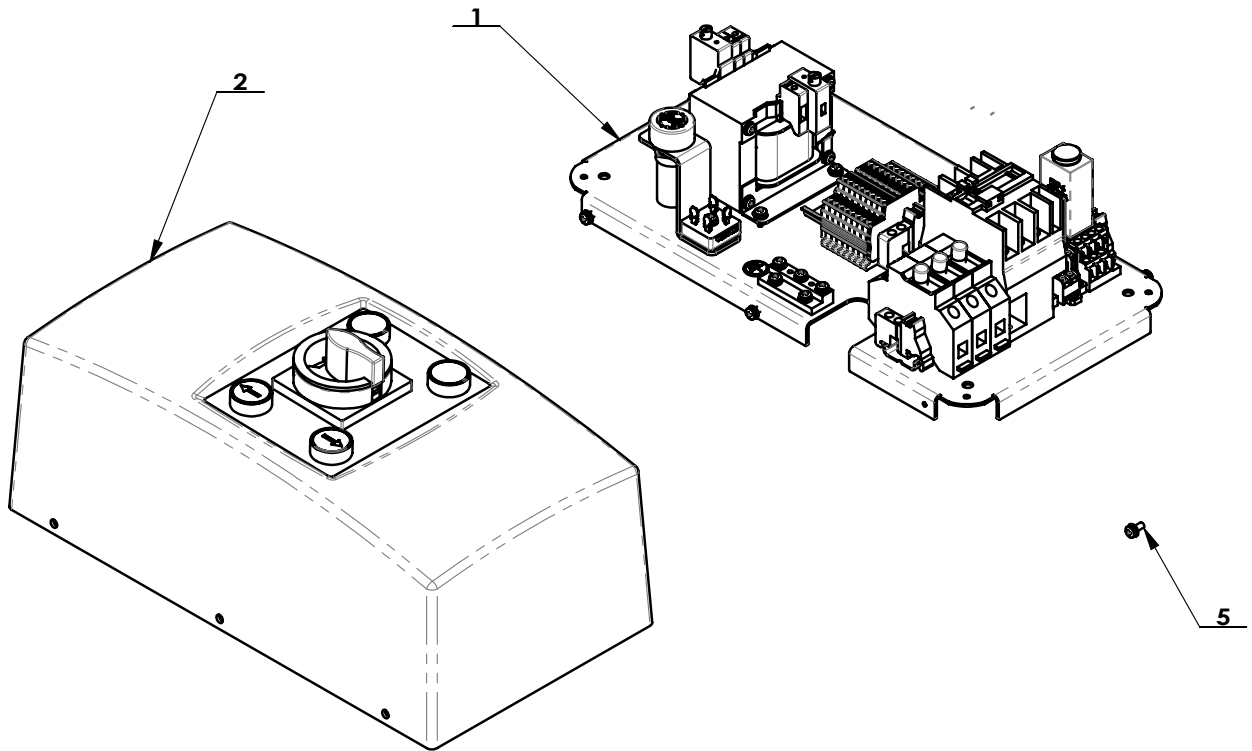
J101-1132000 (400V/3P)			
ITEM	PART. No	DESCRIPTION	QT. Y
1	J601-1921001	Central manifold type one	1
2	J101-1132A02-4.8CC	Gear pump 4.8 cc/rev	1
3	J401-1331016	Adjustable flow valve 0.3~10L/min	1
4	J401-1331015	Relief valve 140~350bar	1
5	TC-20-1031206	check valve ball type	1
7	J401-1331002	Solenoid 2/2 way valve 3/4-16 UNF	1
9	UF2057	O Seal ring $\phi 117 \times 3.55$	1
12	J101-1130101	Relief valve dumpener	1
13	VFC08-M8.0	Fixed pressure compensated valve 8 l/min G1/4	1
14	J401-1331066	Starting valve	1
16	J401-1331003	Coil 24V AC 18W	1
17	J101-1132A03	SQUARE FUEL TANK	1

J101-1181000 (230V/50Hz/1P)			
2	J101-1132A02-4.2CC	Gear pump 4.2 cc/rev	1

J101-1260000 (230V/60Hz/1P)			
2	J101-1132A02-2.5CC	Gear pump 2.5 cc/rev	1

All circled position numbers are recommended spare parts

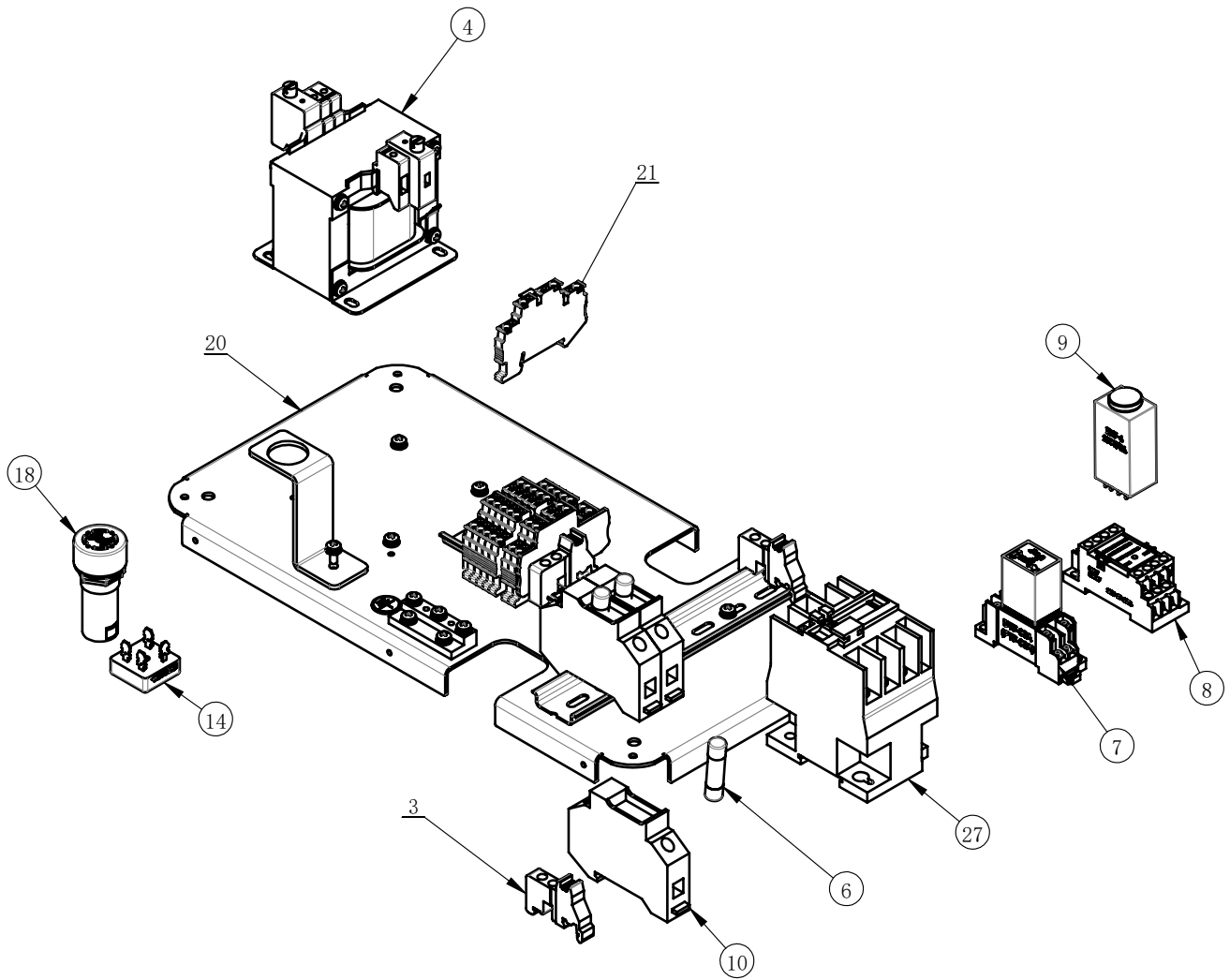
J233-1800000



J233-1800000 (400V/3P)			
ITEM	PART. No	DESCRIPTION	QT. Y
1	J233-1810000	ELECTRICAL CONTROL PANEL	1
2	J233-1820000	ELECTRICAL CONTROL BOX AND COVER ASSEMBLY	1
5	GB9074.4-M4x10	Cross recessed pan head flat spring washer combination screw	6

All cirplaced position numbers are recommended spare parts

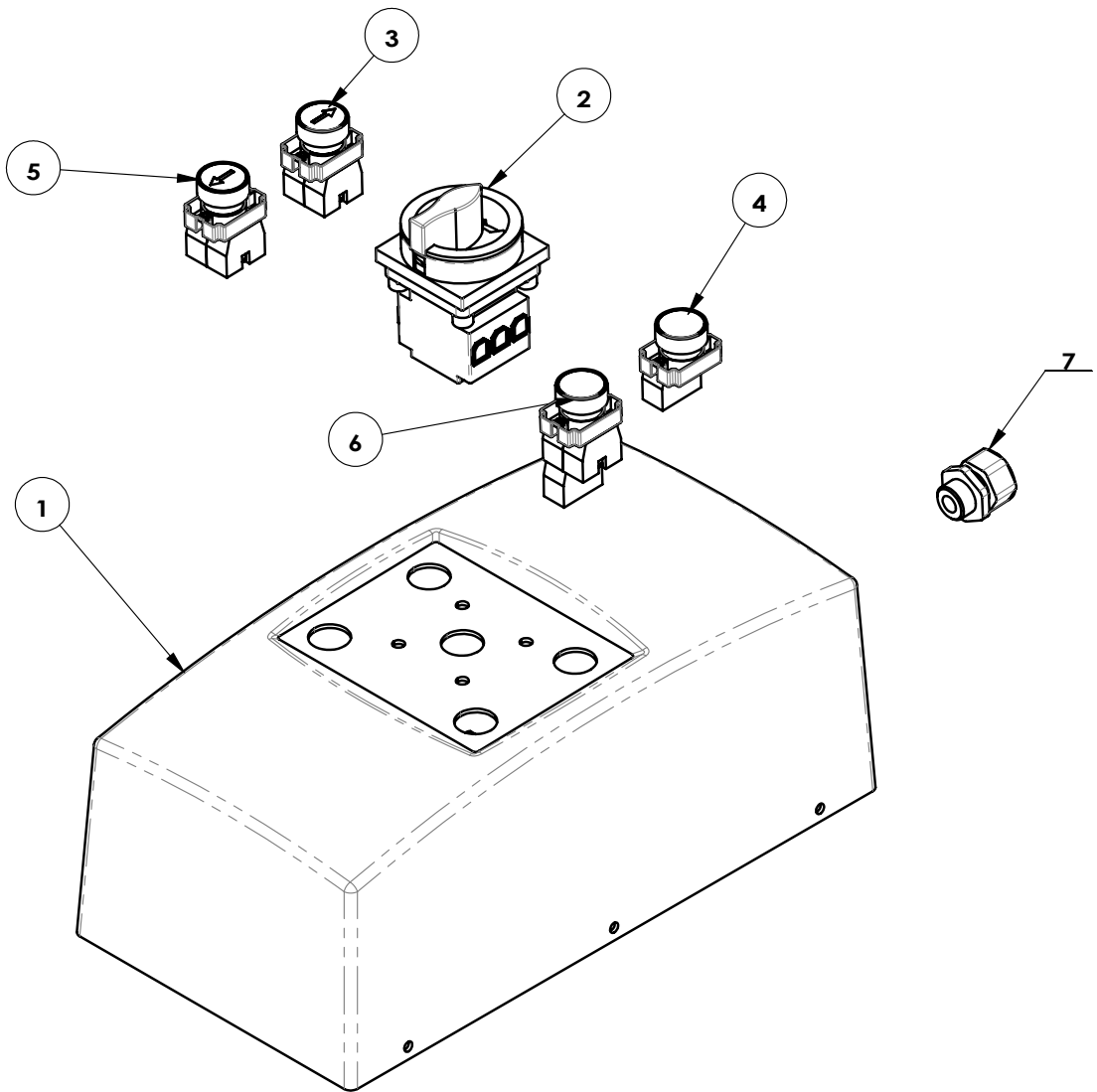
J233-1810000



J233-1810000 (400V/3P)			
ITEM	PART. No	DESCRIPTION	QT. Y
3	TC-E-5130000	Connector	4
4	TC-E-3840232	Transformer	1
6	TC-E-7101512	Fuse	3
7	TC-E-4400224	Intermediate relay	1
8	TC-E-43Z6524	Socket	1
9	TC-E-43Z6424	Time delay	1
10	TC-E-7128323	Fuse Holder	3
14	TC-E-7103510	Rectifier Bridge	1
18	TC-E-7202408	Buzzer	1
20	J101-1121001	Electro Plate	1
21	TC-E-511TB25	Connector	8
27	TC-E-4221024	AC Contactor	1

All cirplaced position numbers are recommended spare parts

J233-1820000



J233-1820000 (400V/3P)			
ITEM	PART. No	DESCRIPTION	QT. Y
1	J101-1122018	Plastic cover	1
2	TC-E-2401616	Main Switch	1
3	J101-1122M00	Push Button	1
4	TC-E-270BA31	Push Button	1
5	TC-E-2702343	Push Button	1
6	TC-E-270BA53	Push Button	1
7	TC-E-7700020	CABLE LOCK HEAD M20X1.5	1