

# CM350-LS Spare Parts

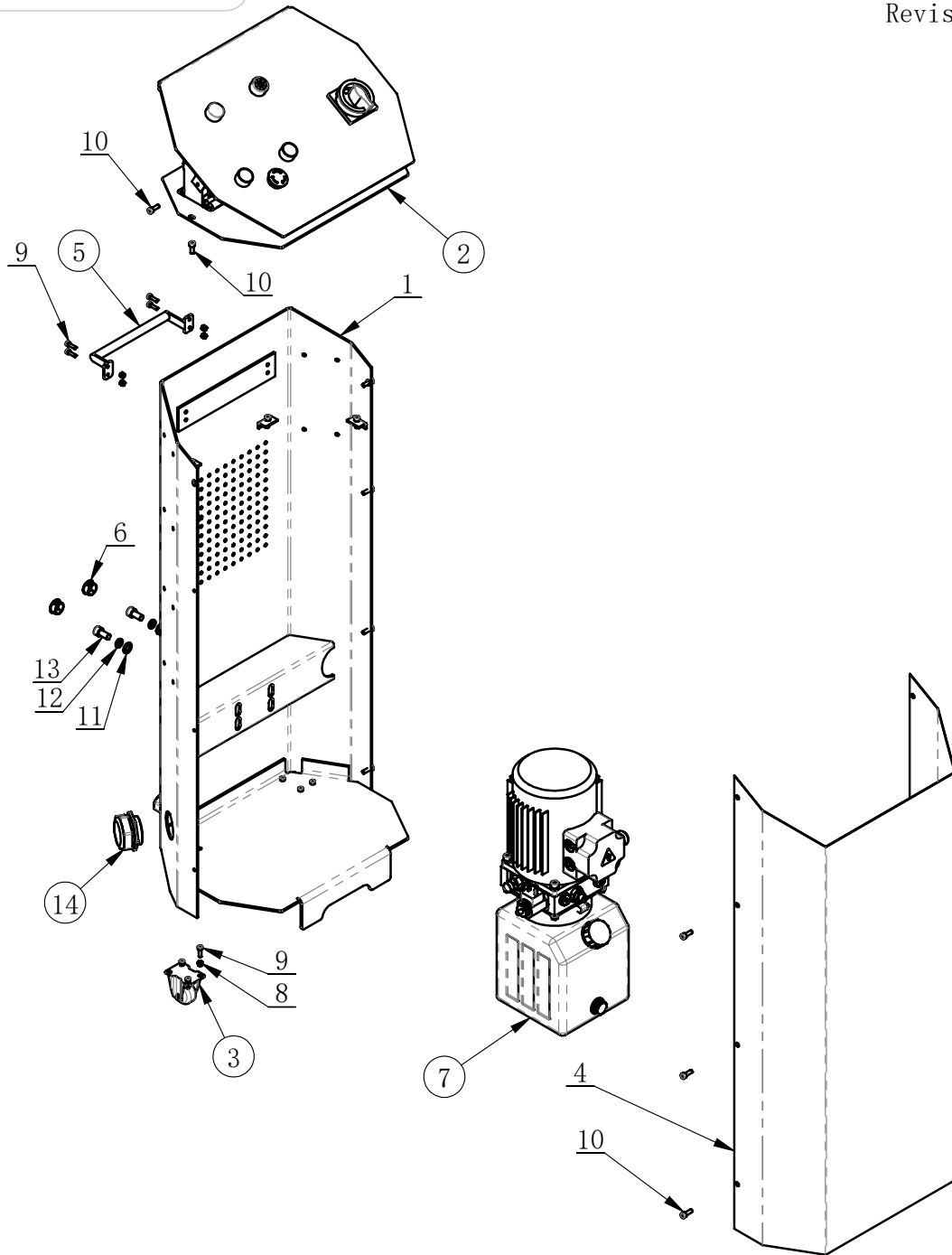
J621-1000000.

Revision A-01

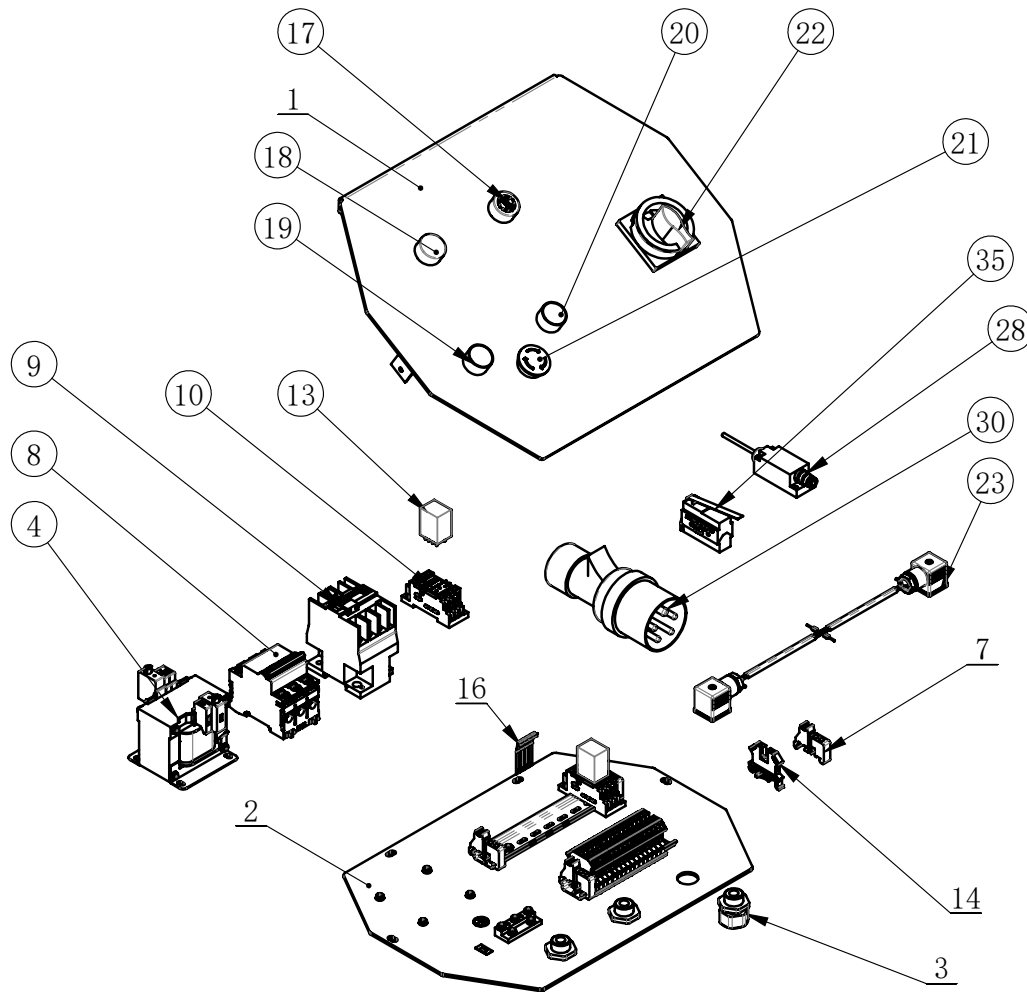
ITEM	PART. No	DESCRIPTION	QT. Y
1	J621-1100000	left baseframe	1
2	J621-1200000	right baseframe	1
3	J621-1300000	fixing scissor arm	1
4	J621-1400000	moving scissor arm	1
5	J621-1500000	Platform	2
6	J621-1900000	fixing axle	4
7	J621-1A00000	console	1
8	J621-1B00000	hose kit	1
9	J621-1C00000	start lever	2
10	J601-1F00000	slider group	2
11	J621-1F00000	Cylinder	4
12	J601-1A00000	pulley assembly	4
13	J621-1L00000	right ramp assembly	2
14	J601-1D00000	limit support	4
15	J621-1000003	hook	8
16	J621-1000004	cylinder axle	2
17	J621-1000008	Cylinder Pin Bottom	4
18	GB858-25	STOP WASHER FOR ROUND NUT	4
19	J621-1000014	stop collar	4
20	J621-1000016	Cylinder Pin Bottom	2
21	J621-1000017	warning board	2
22	J621-1000018	Tubing sleeve	1
23	J621-1000019	cable clamp	2
24	J601-1000003	flap	4
25	J601-1000004	Wear resistant frame	4
26	J601-1000008	roller shaft	4
27	J621-1000013	stop collar	4
28	J401-1000004	Rubber Pad	4
29	J401-1100012	Nut M25X1,5	8
30	SF-1-30260	SUPPERSED SHAFT SLEEVE	4
31	SF-1-25115	Self-Lubricating Bushing	8
32	GB12613-25X28X20	Self-Lubricating Bushing	4
33	GB894.1-25	SHAFT ELATIC BIG RETAINING RING A-TYPE	4
34	GB70.1-M10×100	INNER HEXA CYLINDRICAL SCREW	8
35	GB889.1-M10	1-TYPE PREVAILING TORQUE TYPE HEXAGON LOCK NUT	8
36	GB894.1-15	SHAFT ELATIC BIG RETAINING RING A-TYPE	8
37	GB93-8	STANDARD SPRING WASHER	8
38	GB70.1-M8×20	INNER HEXA CYLINDRICAL SCREW	8
39	GB70.1-M8×35	INNER HEXA CYLINDRICAL SCREW	8
40	GB889.1-M8	1-TYPE PREVAILING TORQUE TYPE HEXAGON LOCK NUT	8
41	GB5781-M6×12	HEXANGULAR BOLT	4
42	GB12618.1-5×12	SLOTTED FLAT CONE RIVET 10、11 GRADE	10
43	GB818-M4×25-H	CROSS PANHEAD SCREW	2
44	GB818-M4×16-H	CROSS PANHEAD SCREW	2
45	J621-1N00000	handle	4
46	GB9074.4-M4x10	Cross recessed pan head flat spring pad set screws	2
47	J621-1M00000	left ramp assembly	2
48	J621-1000021	Wear resistant frame	2
49	J101-1151003	MICRO SWITCH	1
50	J621-1000020	Mounting plate	1
51	GB9074.4-M4x30	COMBINATION SCREW	2
52	GB95-6	FLAT WASHER	4
53	GB70.2-M6×10	INNER HEXA CYLINDRICAL ROUND HEAD SCREW	4

J621-1A00000.

Revision A-01



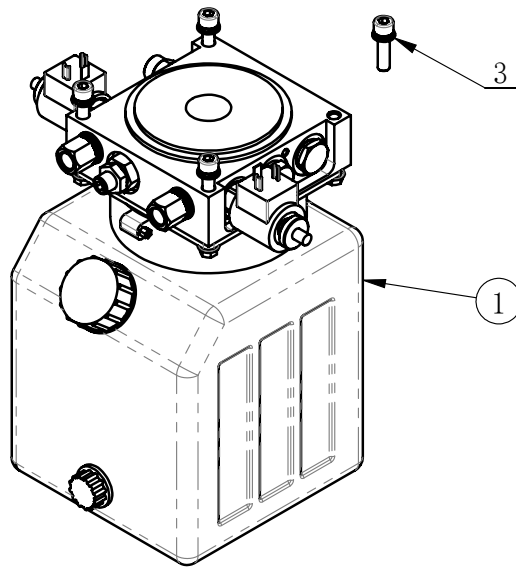
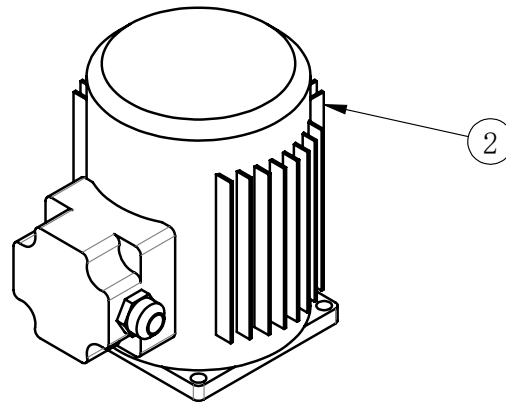
ITEM	PART. No	DESCRIPTION	QT. Y
1	J621-1A10000	Body	1
2	J621-1A20000	Electronic assembly	1
3	J621-1A30000	Moving wheel	2
4	J621-1A00001	Front cover	1
5	J621-1A00002	Stainless steel handle	1
6	J302-1600001	SKT-22 plastic cap	2
7	J621-1A60000	HPU for mid-rise scissor lift	1
8	GB889.1-M5	1-TYPE PREVAILING TORQUE TYPE HEXAGON LOCK NUT	10
9	GB70.1-M5×16	INNER HEXA CYLINDRICAL SCREW	10
10	GB70.1-M6×16	INNER HEXA CYLINDRICAL SCREW	12
11	GB95-10	FLAT WASHER	2
12	GB93-10	STANDARD SPRING WASHER	2
13	GB70.1-M10×20	INNER HEXA CYLINDRICAL SCREW	2
14	J621-1A00003	CABLE LOCK HEAD M22X1.5	1
15	TC-E-7701122	CABLE LOCK HEAD M22X1.5	1



ITEM	PART. No	DESCRIPTION	QT. Y
1	J621-1A21000	Case cover	1
2	J621-1A20001	Electronic control panel	1
3	TC-E-7701122	CABLE LOCK HEAD M22X1.5	4
4	TC-E-3840232	100W transformer	1
7	TC-E-5130000	fixing clip	4
8	TC-E-4473016	16A breaker	1
9	TC-E-4220124	A/C contactor	1
10	TC-E-43Z6524	relay socket	2
13	TC-E-4400424	intermediate relay	2
14	TC-E-5110025	Connection	17
16	J101-1121008	Intermediate relay clasp	4
17	TC-E-7202408	Signal	1
18	TC-E-7202409	white Light	1
19	TC-E-27A0101	Push button	1
20	TC-E-27A0301	Push button	1
21	TC-40-1800015	Emergency stop button	1
22	J101-1512500	Main	1
23	J621-1A22003	Solenoid valve line set	1
28	TC-E-XME9101	TRAVEL SWITCH	1
30	TC-E-DEP2015	Industrial plug (5-core)	1
35	J101-1151003	MICRO SWITCH	1

J621-1A60000.

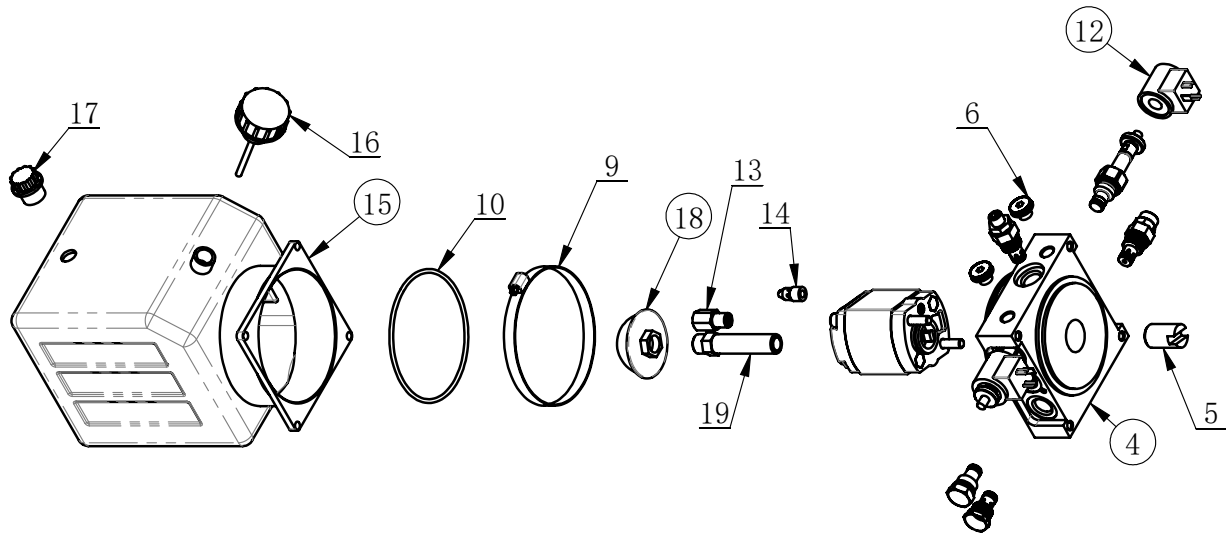
Revision A-01



400V 3P 50/60Hz			
ITEM	PART. No	DESCRIPTION	QT. Y
1	J621-1A62000	Hydraulic pump unit	1
2	J101-1131000	Electro Motor	1
3	GB9074-M8×25	COMBINATION SCREW	4

J621-1A61000.

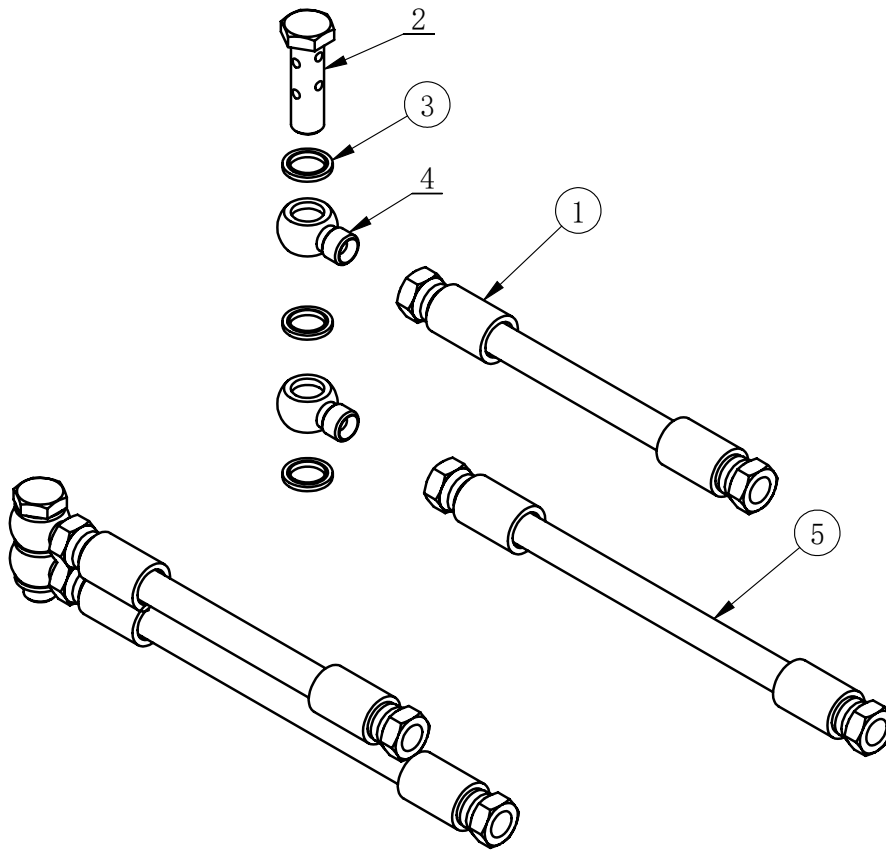
Revision A-01



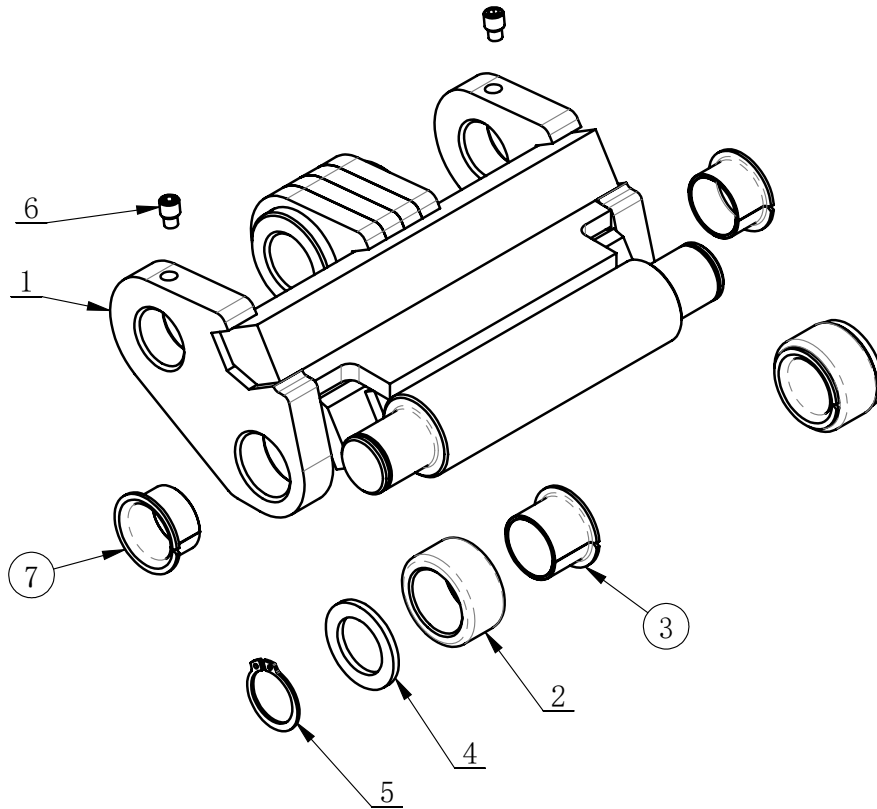
ITEM	PART. No	DESCRIPTION	QT. Y
1	J101-1132A02-6CC	Gear pump 6 cc/rev	1
2	J401-1331015	Relief valve 140~350bar	1
3	J401-1331016	Adjustable flow valve 0.3~10L/min	1
4	J401-1331101	Central manifold type one	1
5	J101-1130101	Relief valve dumpener	1
6	J301-9400002	Closed plug G1/4	2
7	J601-1921009	closed plug for cavity 3/4-16 UNF	1
8	TC-20-1031206	check valve ball type	2
9	TC-20-1031213	THROAT BUCKLE	1
10	UF2057	O Seal ring $\phi 117*3.55$	1
11	J401-1331002	Solenoid 2/2 way valve 3/4-16 UNF	2
12	J401-1331003	Coil 24V AC 18W	2
13	J401-1331066	Starting valve	1
14	VFC08-M8.0	Fixed pressure compensated valve 8 l/min G1/4	1
15	J601-1921005	5l Plastic square tank white colour	1
16	TC-20-1031209	THE CUP	1
17	TC-20-1031207	DRAIN PLUG	1
18	TC-20-1031210	FILTER	1
19	J601-1921006	Suction pipe	1

J621-1B00000.

Revision A-01



ITEM	PART. No	DESCRIPTION	QT. Y
1	J621-1B10000	short hose	2
2	J201-1600001	BRITISH MADE HINGE BOLTS	2
3	JB982-13	COMBINED PAD	6
4	J101-1140008	MONOCULAR JOINT	4
5	J621-1B20000	long hose	2

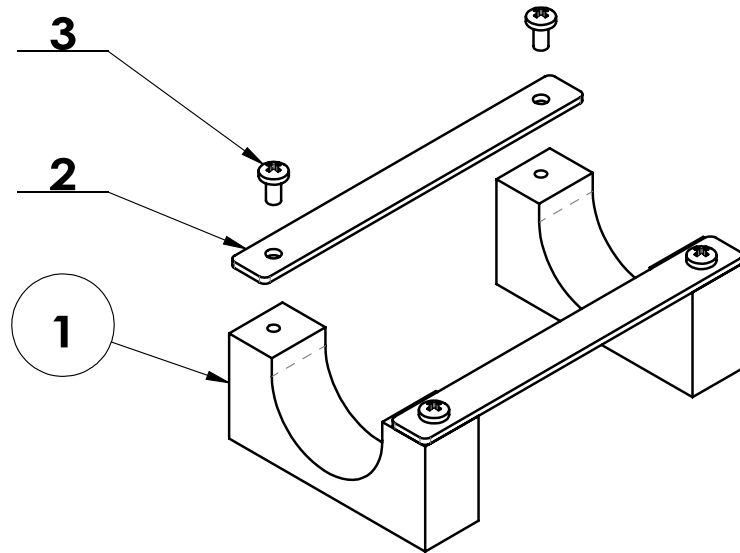


ITEM	PART. No	DESCRIPTION	QT. Y
1	J621-1C10000	start lever	1
2	J621-1C00001	roller shaft	2
3	SF-1-25215	SUPPERSSED SHAFT SLEEVE	2
4	J621-1000013	stop collar	2
5	GB894. 1-25	SHAFT ELATIC BIG RETAINING RING A-TYPE	2
6	GB79-M8×12	INNER HEXA CYLINDRICAL TERMINUS SET SCREW	2
7	SF-1-25165	<b>Self-Lubricating Bushing</b>	2



J601-1F00000.

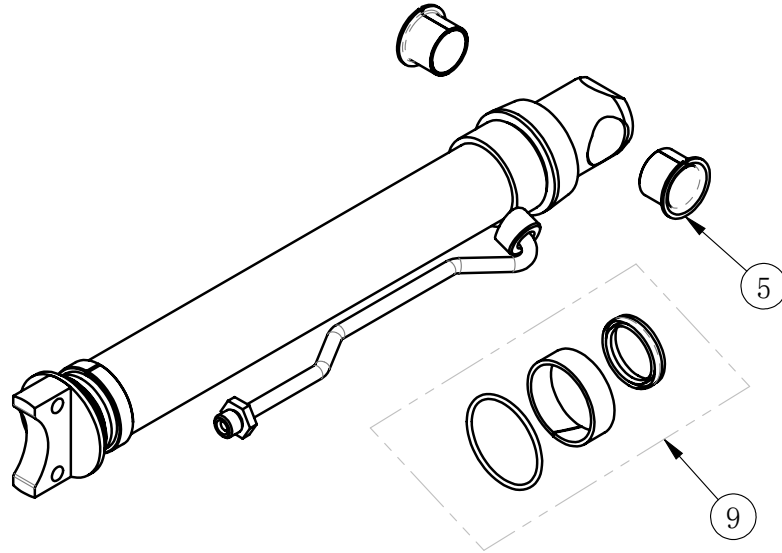
Revision A-02



ITEM	PART. No	DESCRIPTION	QT. Y
1	J601-1F00001	slider	2
2	J601-1F00002	pulling plate	2
3	GB818-M6×12-H	CROSS PANHEAD SCREW	4

J621-1F00000.

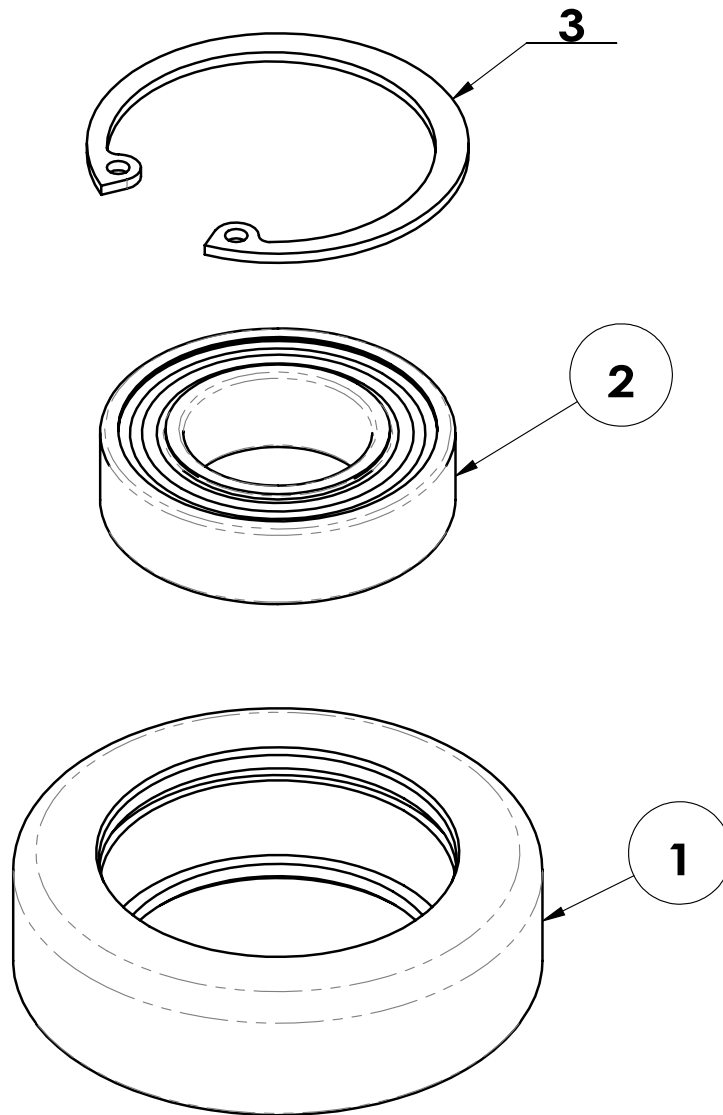
Revision A-01



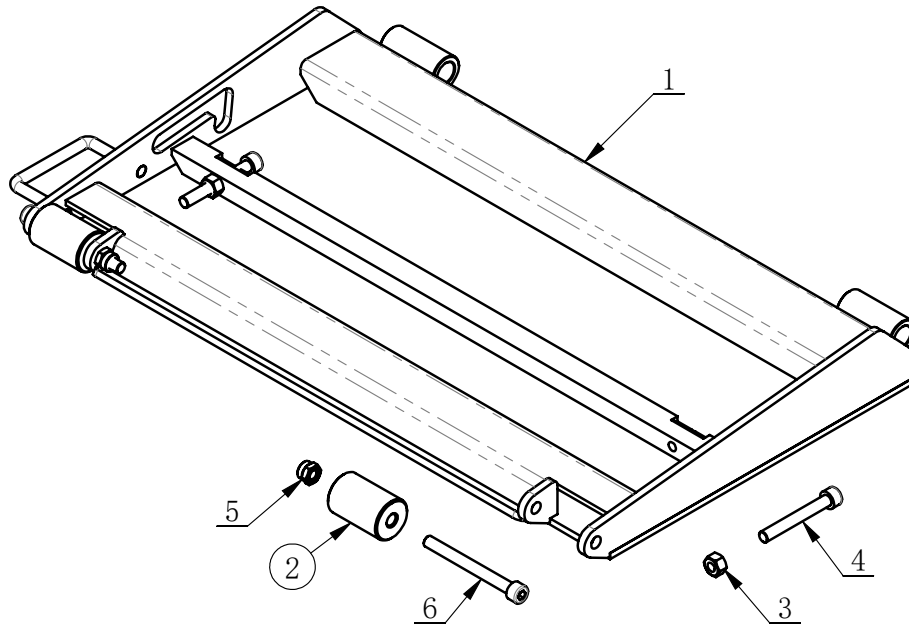
ITEM	PART. No	DESCRIPTION	QT. Y
5	SF-1-25215	SUPPERSSED SHAFT SLEEVE	2
9	J621-1F00000MFJ	Cylinder seal package	1

J601-1A00000.

Revision A-01



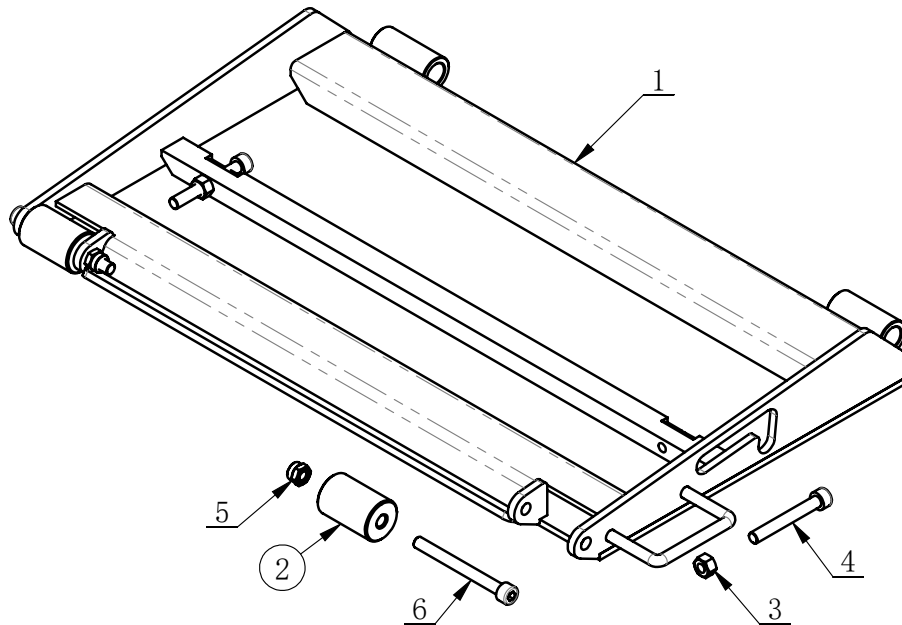
ITEM	PART.No	DESCRIPTION	QT. Y
1	J601-1A00001	roller wheel	1
2	GB276-6005-2RZ	deep groove ball bearing	1
3	GB893. 1-47	ELASTIC RETAINING RING A-TYPE	1



ITEM	PART. No	DESCRIPTION	QT. Y
1	J621-1L10000	right ramp	1
2	J621-1L00001	roller wheel	2
3	GB41-M8	HEXANGULAR NUT	2
4	GB70. 1-M8×60	INNER HEXA CYLINDRICAL SCREW	2
5	GB889. 1-M8	1-TYPE PREVAILING TORQUE TYPE HEXAGON LOCK NUT	2
6	GB70. 1-M8×80	INNER HEXA CYLINDRICAL SCREW	2

J621-1M00000.

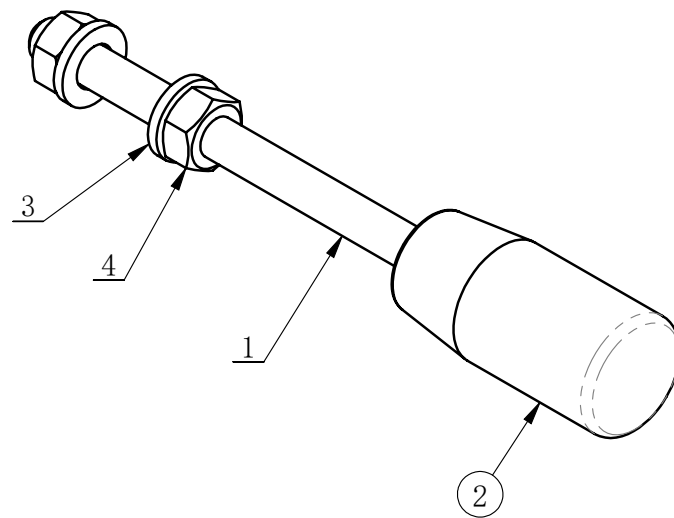
Revision A-01



ITEM	PART. No	DESCRIPTION	QT. Y
1	J621-1M10000	left ramp	1
2	J621-1L00001	roller wheel	2
3	GB41-M8	HEXANGULAR NUT	2
4	GB70. 1-M8×60	INNER HEXA CYLINDRICAL SCREW	2
5	GB889. 1-M8	1-TYPE PREVAILING TORQUE TYPE HEXAGON LOCK NUT	2
6	GB70. 1-M8×80	INNER HEXA CYLINDRICAL SCREW	2

J621-1N00000.

Revision A-01



ITEM	PART.No	DESCRIPTION	QT. Y
1	J621-1N00001	wire couple	1
2	J621-1N00002	Plastic long handle cover	1
3	GB95-6	FLAT WASHER	2
4	GB6170-M6	HEXANGULAR NUT 1-TYPE	2