



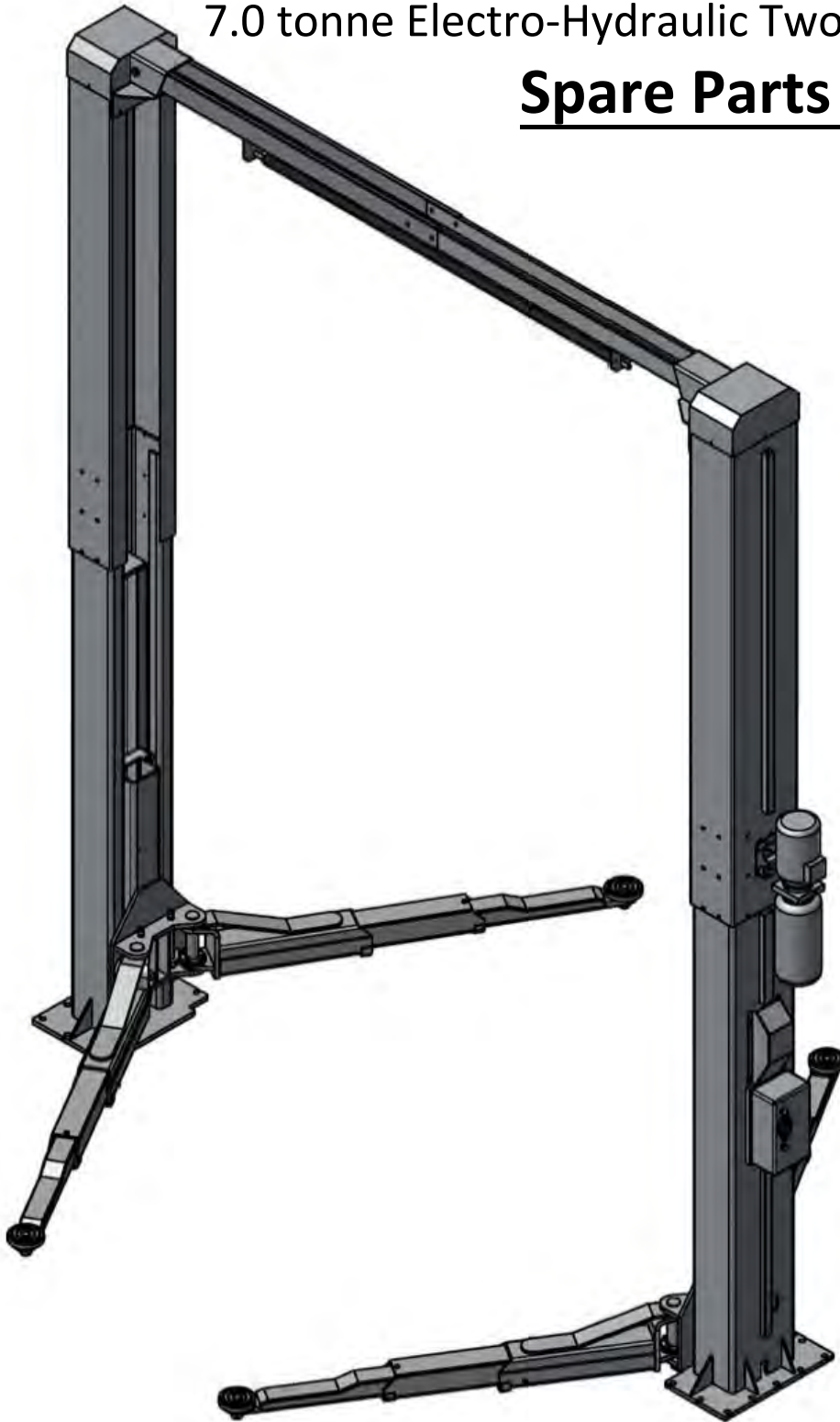
MOLNAR

BY NEXION

SM270 TWO POST HOIST

7.0 tonne Electro-Hydraulic Two Post Hoist

Spare Parts Manual



Updated 07/03/2024

Before commencing
operation inspect
system components,
control, emergency
stop and safety
equipment for
condition and correct

Please read this manual before you get started.

You must read and understand the precautions for safety purposes and any damages that may occur to your property.



MOLNAR
BY NEXION

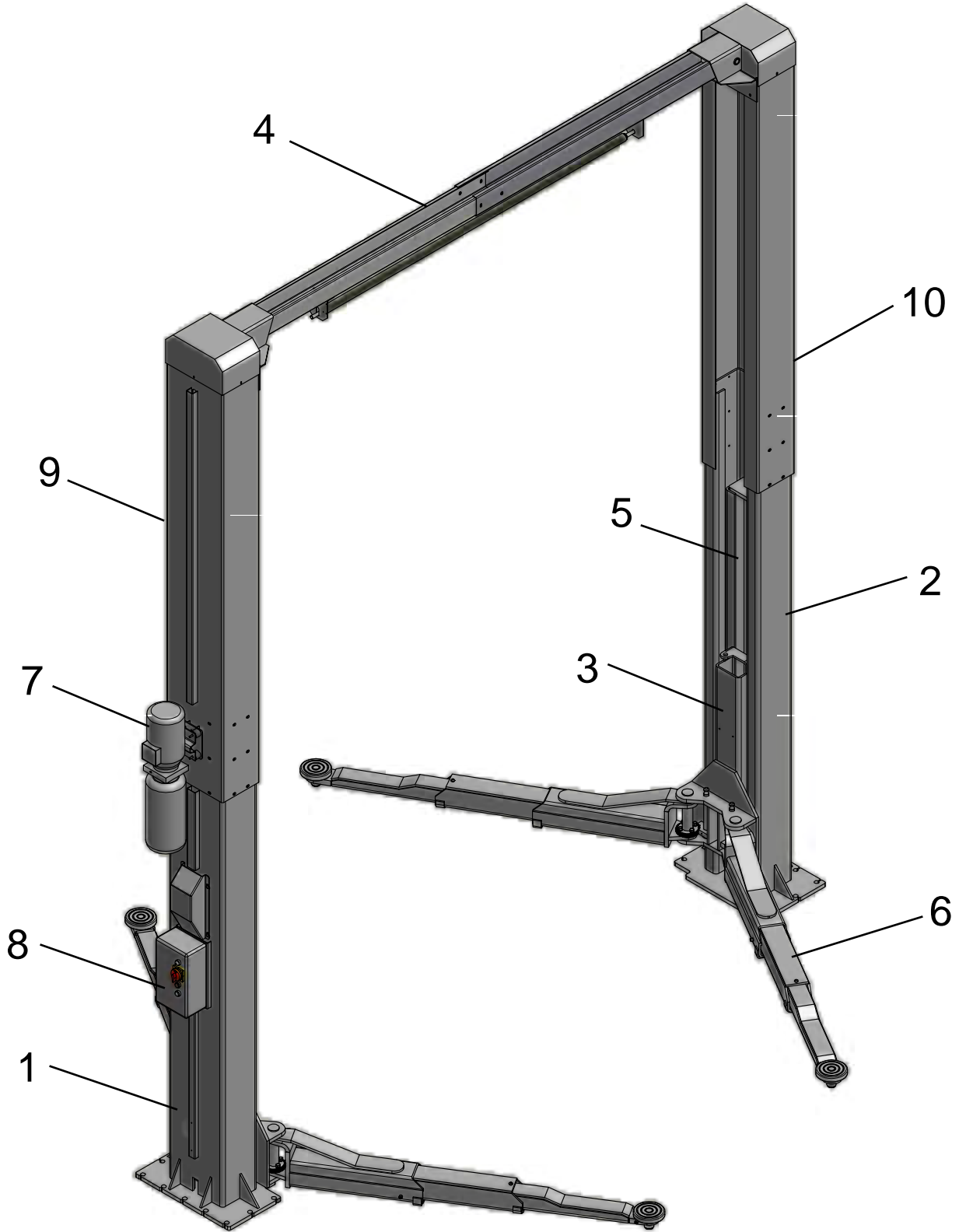
Address: 3 Graham Street
Export Park
South Australia 5950
Ph: **+61 (08) 8234 3611**
Fax: **+61 (08) 8234 4322**
Email: sales@molnarhoists.com.au
Web: www.molnarhoists.com.au

Specifications/images subject to change without prior notice, Images and sketches are for illustration purposes only.

TABLE OF CONTENTS

Construction	4
Post	6
Carriage - Cylinder.....	8
Lifting Arm	10
Cross Beam.....	12
Power Pack	14
Control Unit	16

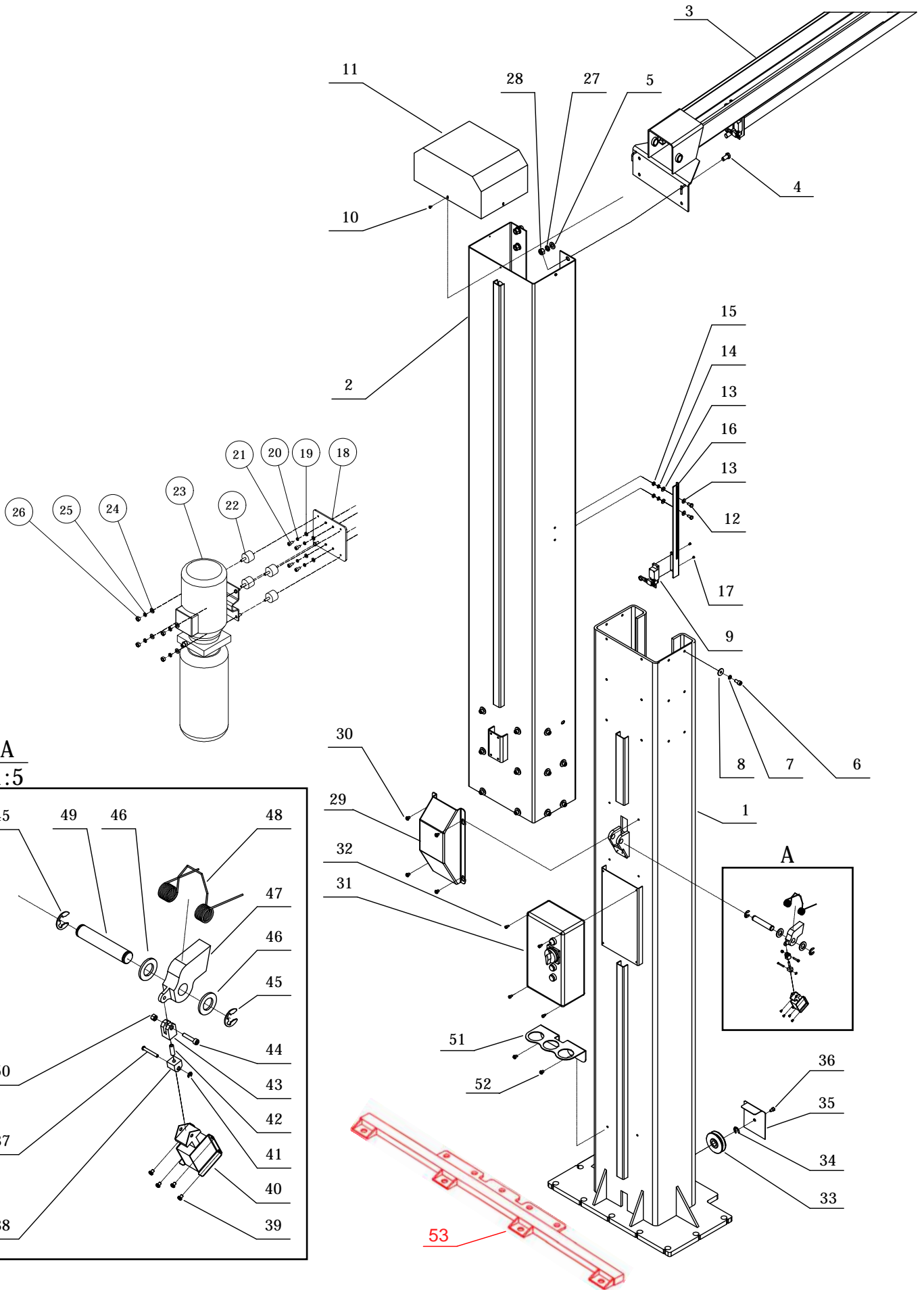
CONSTRUCTION OF LIFT



CONSTRUCTION OF LIFT

ITEM	PART NO.	DESIGNATION	SPECIFICATIONS
1		Control post	
2		Slave post	
3		Carriage	
4		Cross beam	
5		Cylinder	
6		Lifting arm	
7		Pump unit	
8		Control unit	
9		Post extension - control	
10		Post extension - slave	

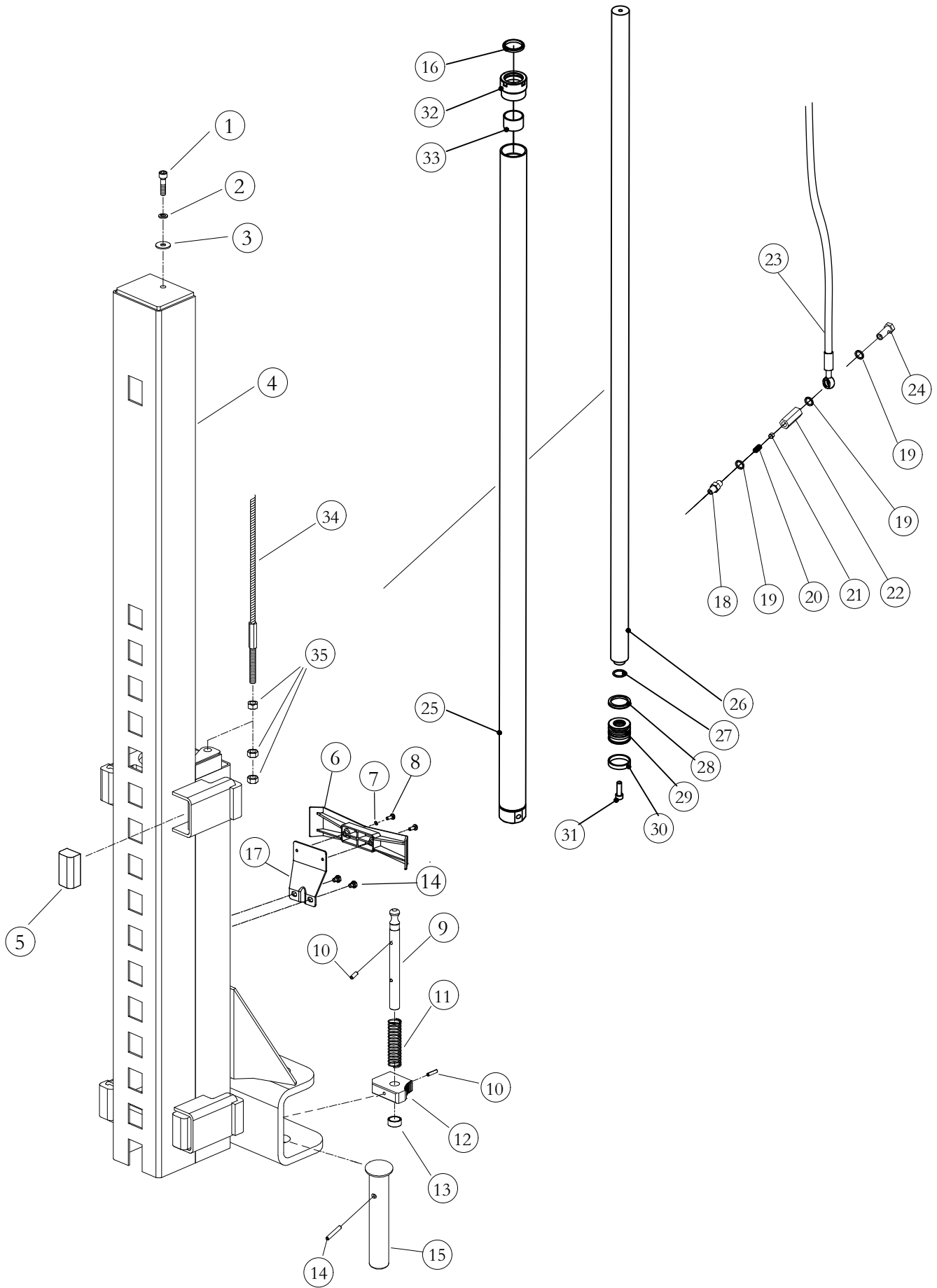
POST



POST

ITEM	PART NO.	DESIGNATION	SPECIFICATIONS
1	SM270-P-1	Post	
2	SM270-P-2	Post extension	
3	SM270-B-1	Cross beam(1)	
4	SM270-P-4	Hex bolt	
5	SM245-E-13	Flat washer	
6	SM245-E-5	Socket screw	
7	SM245-E-4	Spring washer	
8	SM245-E-3	Flat washer	
9	SM245-E-12	Limit Switch	
10	SM270-P-10	Cross head screw	
11	SM270-P-11	Post cap	
12	SM245-E-7	Hex bolt	
13	SM245-E-6	Flat washer	
14	SM245-E-10	Spring washer	
15	SM245-E-9	Hex nut	
16	SM245-E-24	Bracket for limit switch	
17	SM245-E-16	Cross head screw	
18	SM245-M-17	Mounting plate for pump unit	
19	SM245-M-20	Flat washer	
20	SM245-M-21	Spring washer	
21	SM245-M-23	Hex screw	
22	SM245-M-18	Anti vibration rubber	
23	SM270-PU-27	Power pack	
24	SM245-M-20	Flat washer	
25	SM245-M-21	Spring washer	
26	SM245-M-22	Hex nut	
27	SM245-E-4	Spring washer	
28	SM245-E-8	Hex nut	
29	SM245-P-17	Safety lock cover	
30	SM245-P-18	Cross head screw	
31	SM270-PC-16	Control unit	
32	SM245-PC-15	Cross head screw	
33	SM270-P-33	Wire pulley	
34	SM270-P-34	E-ring	
35	SM270-P-35	Wire pulley protector	
36	SM245-C-33	Socket screw	
37	SM245-P-11	Pin	
38	SM270-P-38	Solenoid connector 1	
39	SM245-P-16	Cross head screw	
40	SM245-P-15	Lock solenoid	
41	SM245-P-14	E ring	
42	SM270-P-42	Threaded rod	
43	SM270-P-43	Solenoid connector 2	
44	SM245-P-12	Socket Head bolt	
45	SM245-P-9	E ring	
46	SM245-P-7	Flat washer	
47	SM245-P-6	Lock block	
48	SM245-P-5	Lock spring	
49	SM245-P-8	Lock pin	
50	SM245-P-13	Hex nut	
51	SM270-P-51	Bracket for pad extension	
52	SM270-P-52	Cross head screw	
53	SM270-BF	Base Frame - ***OPTIONAL ITEM***	

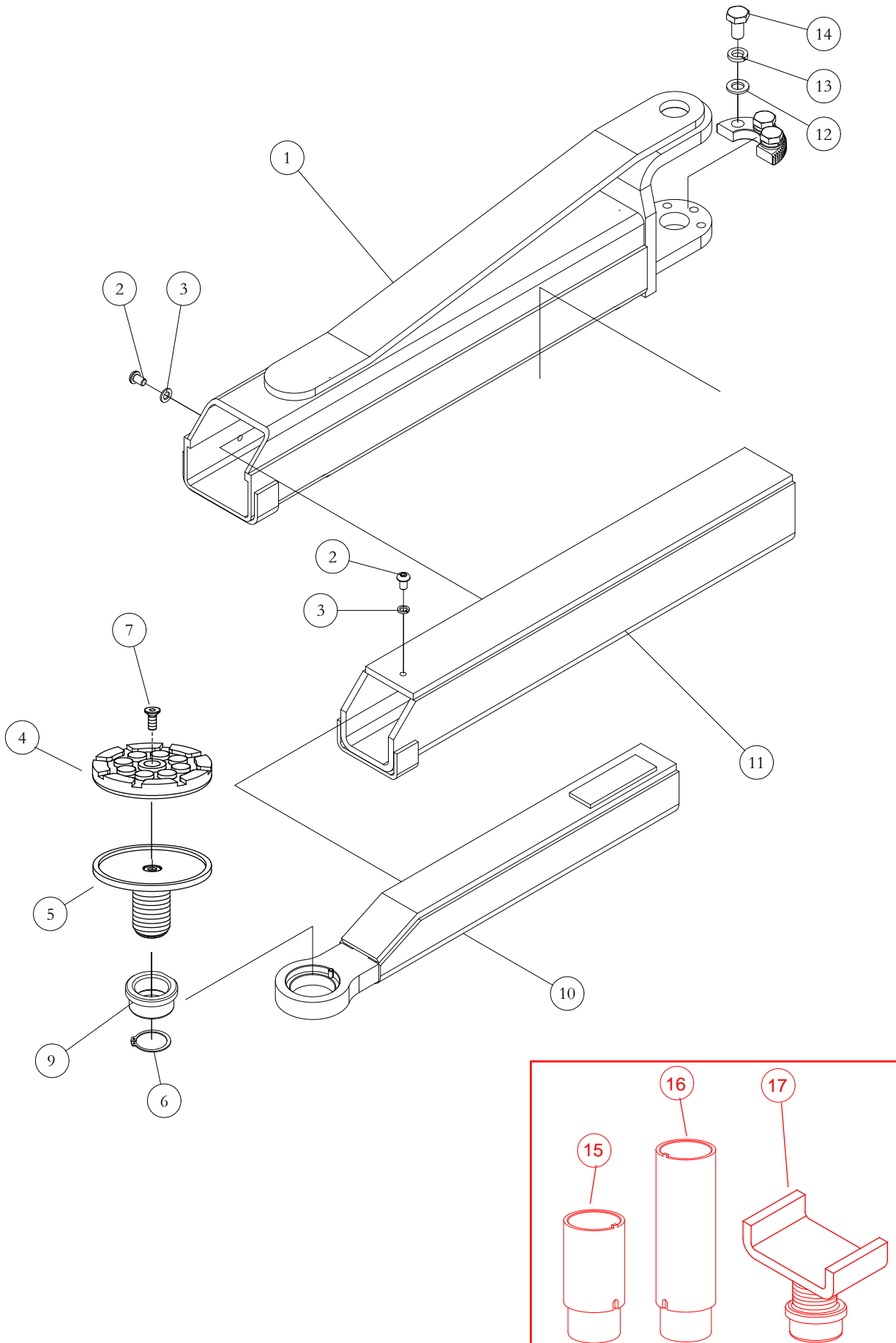
CARRIAGE & CYLINDER



CARRIAGE & CYLINDER

ITEM	PART NO.	DESIGNATION	SPECIFICATIONS
1	SM270-C-1	Hex bolt	
2	SM270-C-2	Spring washer	
3	SM270-C-3	Flat washer	
4	SM270-C-4	Carriage	
5	SM270-C-5	Carriage guide	
6	SM245-C-43	Door protection rubber	
7	SM270-C-7	Flat washer	
8	SM245-C-44	Socket bolt	
9	SM270-C-9	Arm lock gear shaft	
10	SM270-C-10	Spring pin	
11	SM270-C-11	Arm lock spring	
12	SM270-C-12	Inner arm lock gear	
13	SM270-C-13	Arm lock spacer	
14	SM245-C-47	Spring pin	
15	SM270-C-15	Arm shaft	
16	SM270-C-16	Dust seal	
17	SM245-C-46	Mounting bracket	
18	SM245-P-24	Steel nipple	
19	SM245-P-23	Combined washer	
20	SM245-P-27	Orifice spring	
21	SM245-P-26	Orifice	
22	SM270-C-22	Cylinder connector	
23	SM270-PU-23	Hydraulic hose C	
24	SM245-P-28	Banjo fitting	
25	SM270-C-25	Cylinder tube	
26	SM270-C-26	Rod bar	
27	SM270-C-27	O ring	
28	SM270-C-28	Seal ring	
29	SM270-C-29	Piston	
30	SM270-C-30	Piston ring	
31	SM270-C-31	Wrench bolt	
32	SM270-C-32	Head cover	
33	SM270-C-33	DU bearing	
34	SM270-C-34	Steel cable	
35	SM270-C-35	Nut	
36	SM270-C-36	Cylinder Cpl.	
37	SM270-C-37	Cylinder connector ass'y	

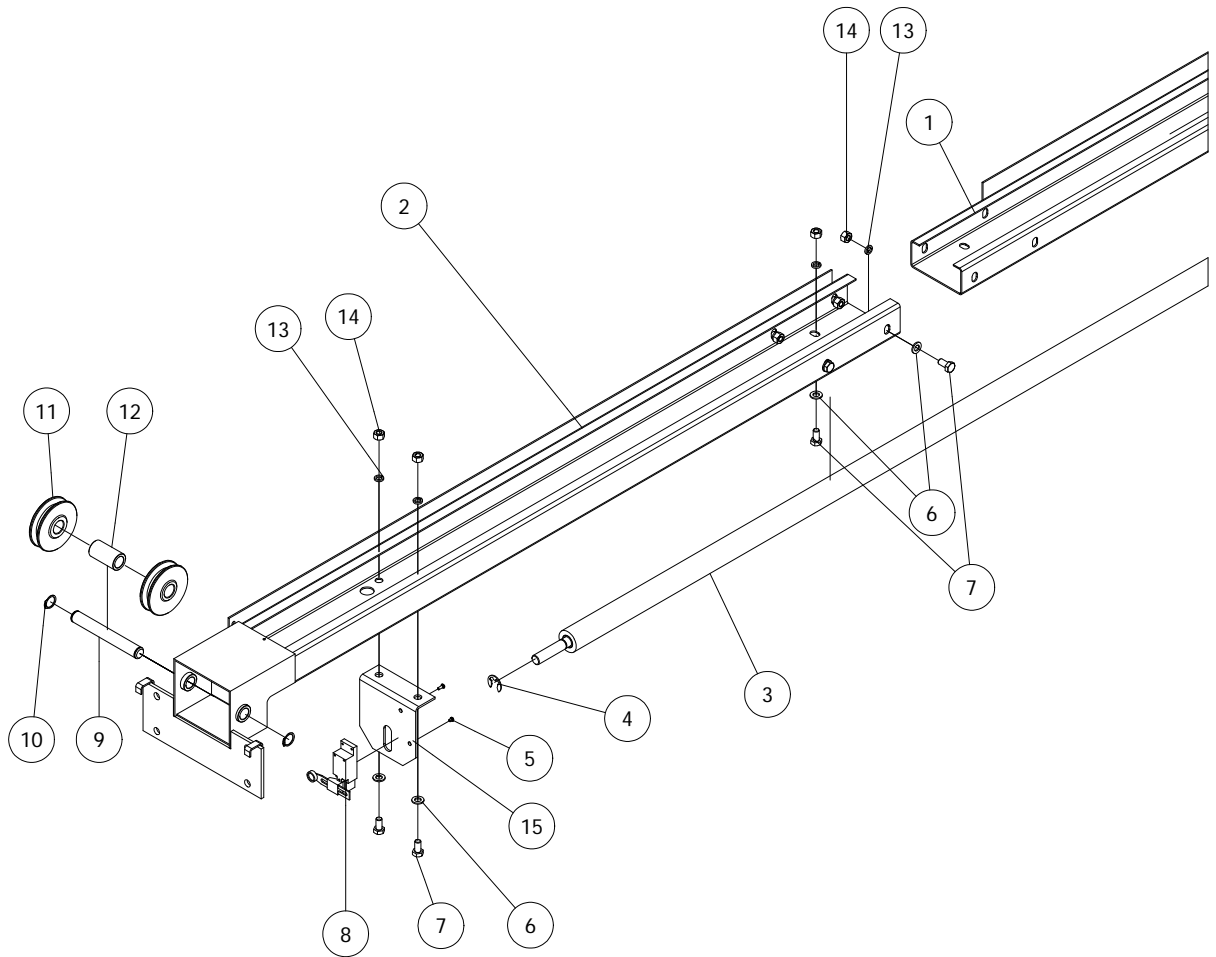
LIFTING ARM



LIFTING ARM

ITEM	PART NO.	DESIGNATION	SPECIFICATIONS
1	SM270-A-1	Lifting arm	
2	SM245-A-11	Socket bolt	
3	SM245-A-7	Flat washer	
4	SM270-A-4	Rubber pad	
5	SM270-A-5	Arm pad plate	
6	SM270-A-6	Circlip	
7	SM270-A-7	Screw	
8	SM270-A-8	Flat washer	
9	SM270-A-9	Arm pad adapter	
10	SM270-A-10	3rd section of lifting arm	
11	SM270-A-11	2nd section of lifting arm	
12	SM270-A-12	Flat washer	
13	SM270-A-13	Spring washer	
14	SM270-A-14	Hex bolt	
15	SM245-A-16	100mm pad extension(set of 4) - ***OPTIONAL ITEM***	
16	SM245-A-17	187mm pad extension(set of 4) - ***OPTIONAL ITEM***	
17	SM270-A-17	U pad (set of 4) - ***OPTIONAL ITEM***	

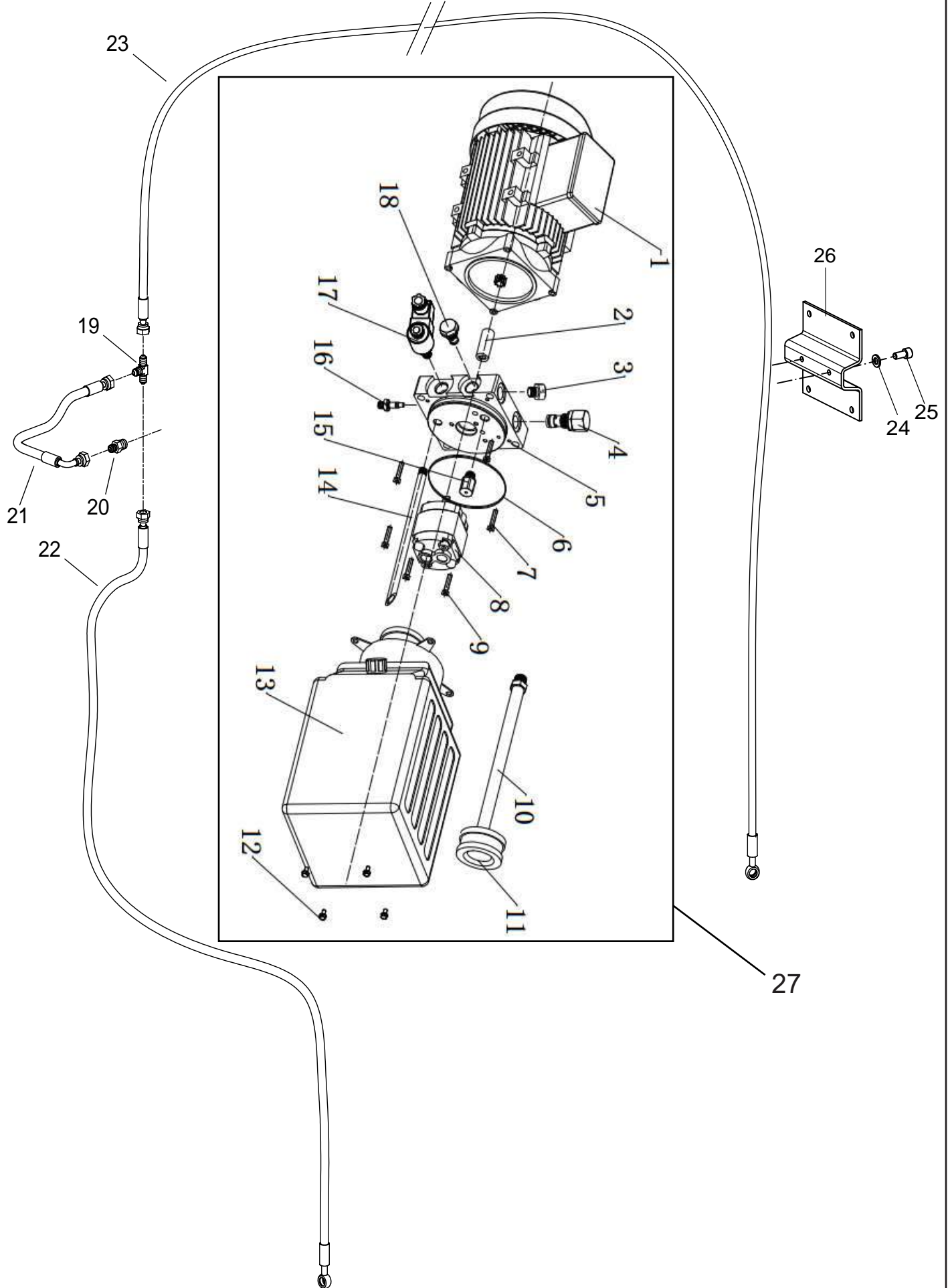
CROSS BEAM



CROSS BEAM

ITEM	PART NO.	DESIGNATION	SPECIFICATIONS
1	SM270-B-1	Cross beam (1)	
2	SM270-B-2	Cross beam (2)	
3	SM270-B-3	Top limit touch bar	
4	SM245-E-21	E-ring	
5	SM245-E-16	Cross head bolt	
6	SM245-E-13	Flat washer	
7	SM245-E-14	Hex nut	
8	SM245-E-12	Limit switch	
9	SM270-B-9	Pulley shaft	
10	SM270-B-10	Flat washer	
11	SM270-B-11	Wire pulley	
12	SM270-B-12	Wire pulley spacer	
13	SM245-E-4	Spring washer	
14	SM245-E-8	Hex bolt	
15	SM245-E-15	Top limit switch bracket	

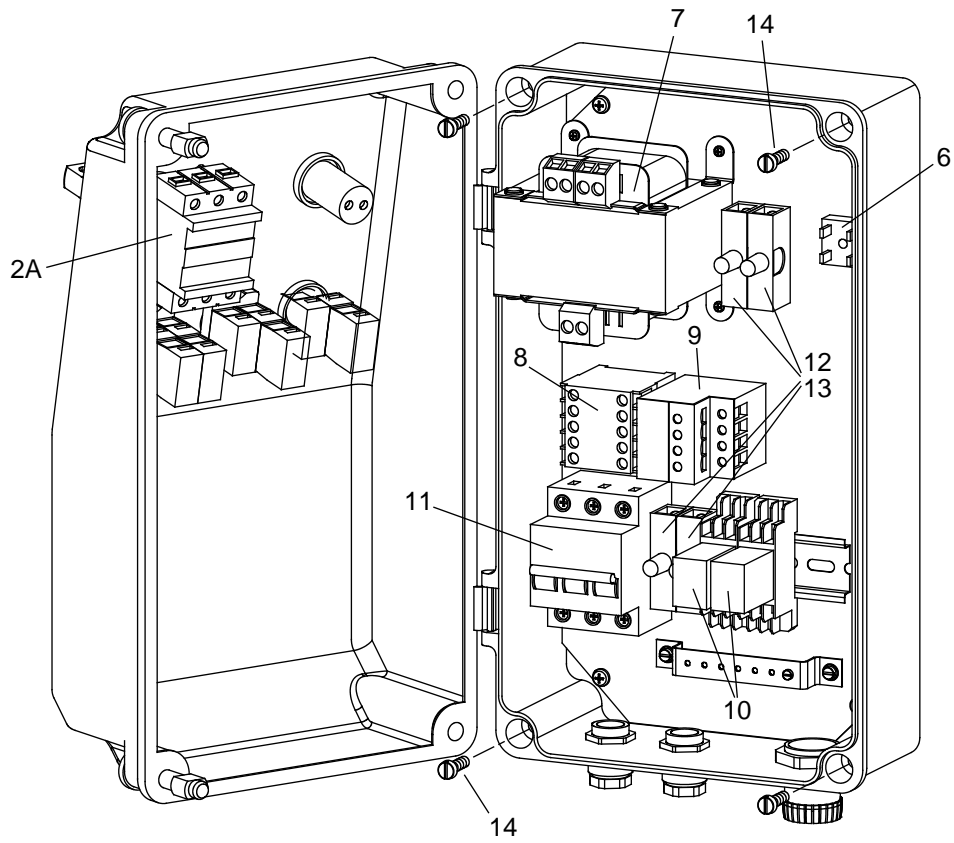
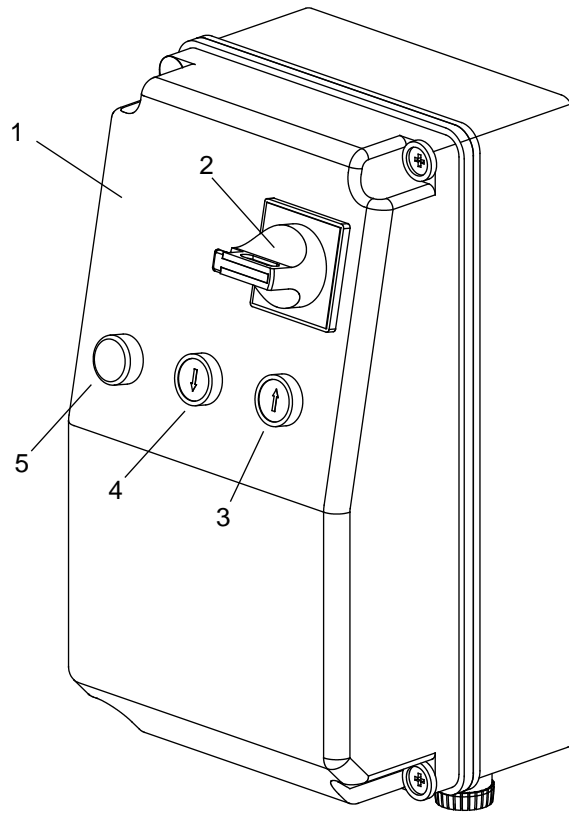
POWER PACK



POWER PACK

ITEM	PART NO.	DESIGNATION	SPECIFICATIONS
1	SM270-PU-1	Motor	
2	SM270-PU-2	Shaft adaptor	
3	SM270-PU-3	Stopper	
4	SM270-PU-4	Pressure valve	
5	SM270-PU-5	Manifold block	
6	SM270-PU-6	Seal ring	
7	SM270-PU-7	Bolt for block	
8	SM270-PU-8	Pump	
9	SM270-PU-9	Bolt for pump	
10	SM270-PU-10	Suction pipe	
11	SM270-PU-11	Filter	
12	SM270-PU-12	Screw for tank	
13	SM270-PU-13	Fuel tank	
14	SM270-PU-14	Oil return pipe	
15	SM270-PU-15	Cushion valve	
16	SM270-PU-16	Throttle valve	
17	SM270-PU-17	Solenoid valve c/w coil	
18	SM270-PU-18	One-way valve	
19	SM245-M-12	T-union	
20	SM245-M-13	Hexagon nipple	
21	SM245-M-14	Hydraulic hose A	
22	SM245-M-15	Hydraulic hose B	
23	SM270-PU-23	Hydraulic hose C	
24	SM245-E-13	Washer	
25	SM245-M-25	Bolt	
26	SM245-M-26	Bracket	
27	SM270-PU-27	Power Pack Cpl.	

CONTROL UNIT



CONTROL UNIT

ITEM	PART NO.	DESIGNATION	SPECIFICATIONS
	SM245-PC-3PH	Control unit cpl.	
1	SM270-PC-1	Control box housing	
2	SM245-PC-1	Main switch	
3	SM245-PC-2	Pushbutton UP	
4	SM245-PC-5	Pushbutton DOWN	
5	SM245-PC-4	Lamp	
6	SM245-PC-6	Rectifier	
7	SM245-PC-7	Transformer	
8	SM270-PC-8	Contactator	
9	SM270-PC-9	Overload	
10	SM245-PC-10	Relay	
11	SM245-PC-11	Circuit breaker	
12	SM245-PC-12	Fuse holder	
13	SM245-PC-13	Fuse	
14	SM245-PC-14	Screw	