



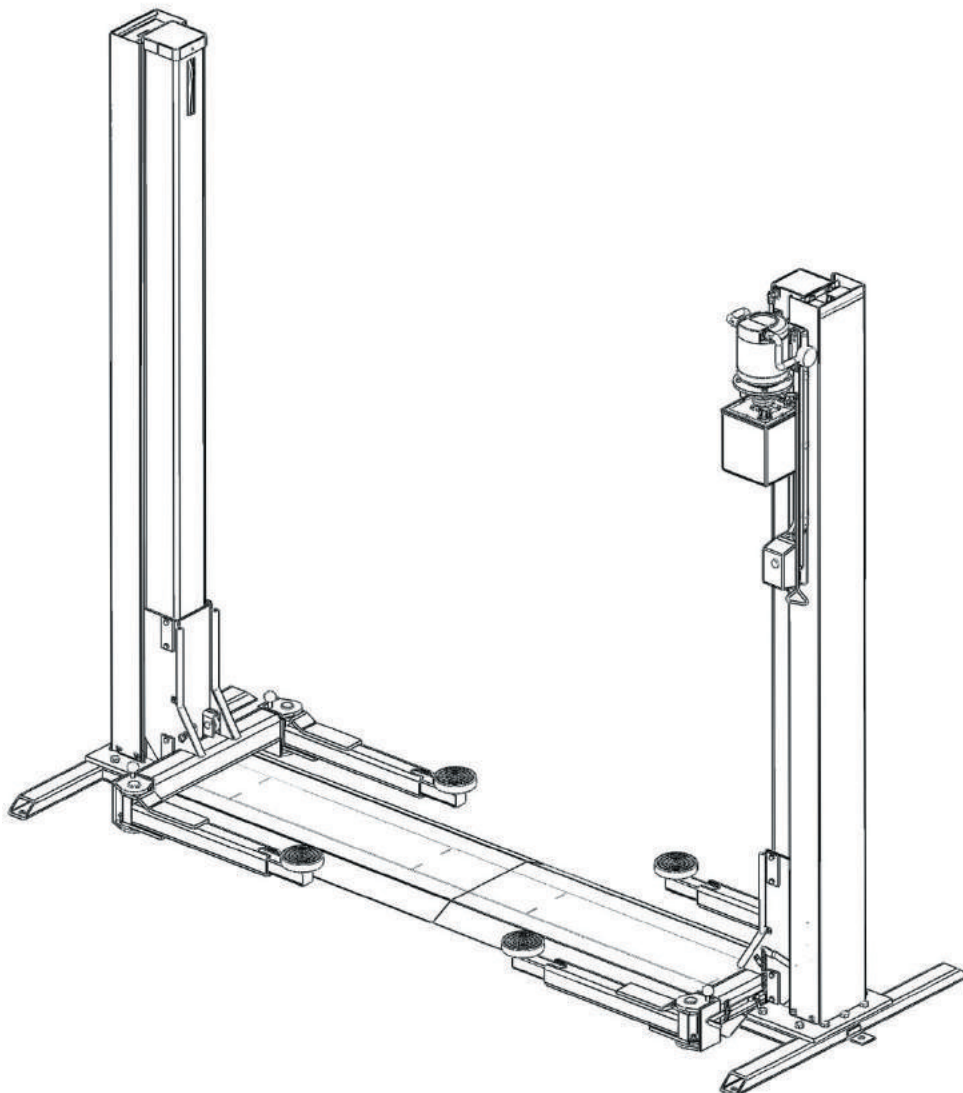
*Makers of the famous
TWO-POST AND FOUR-POST
HOISTS & ACCESSORIES*

MOLNAR ENGINEERING PTY. LTD.

TWO POST HOIST

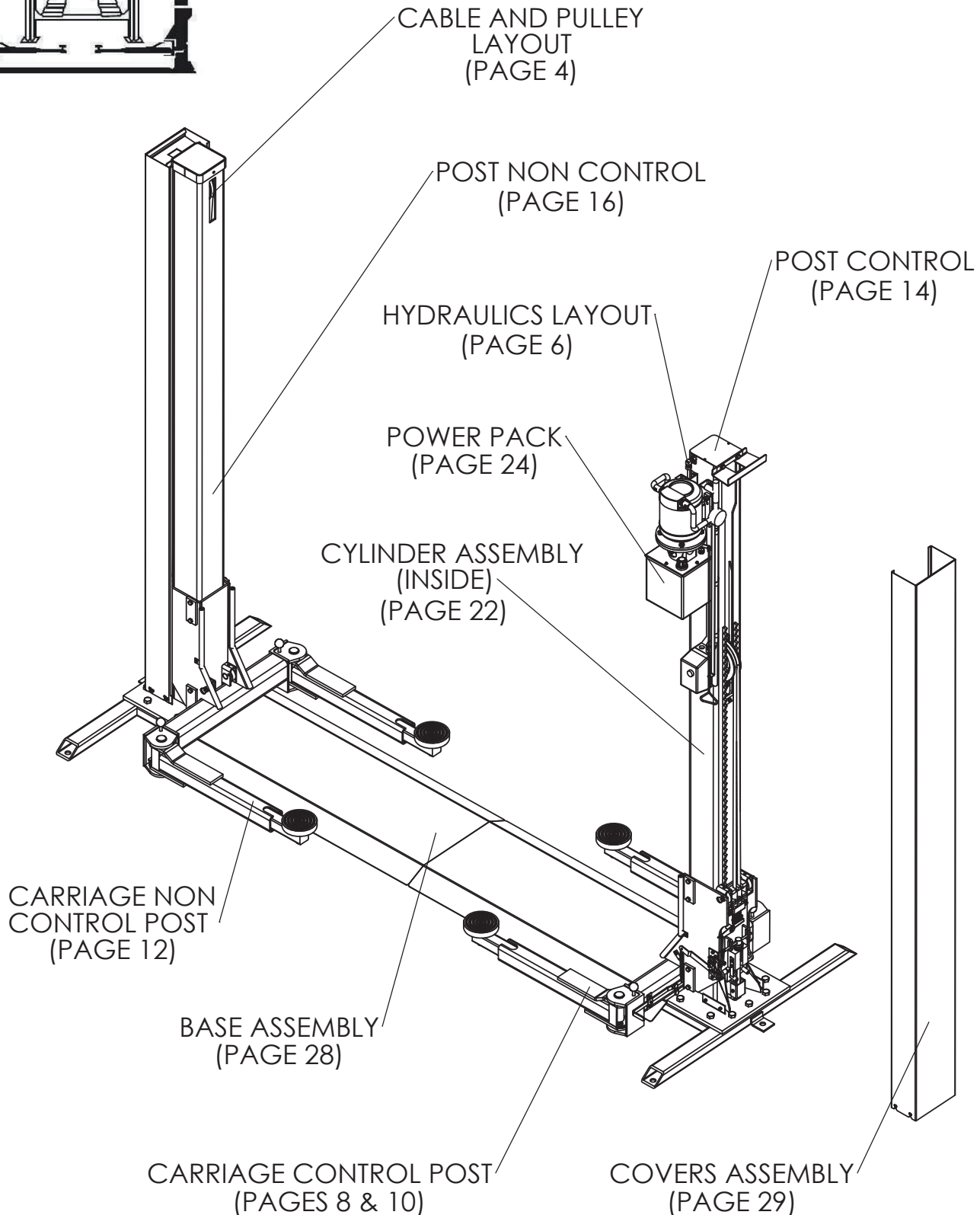
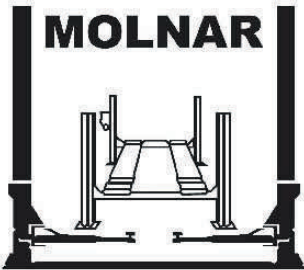
MODEL MF1705-85A/3T SERIES 2

PARTS IDENTIFICATION MANUAL

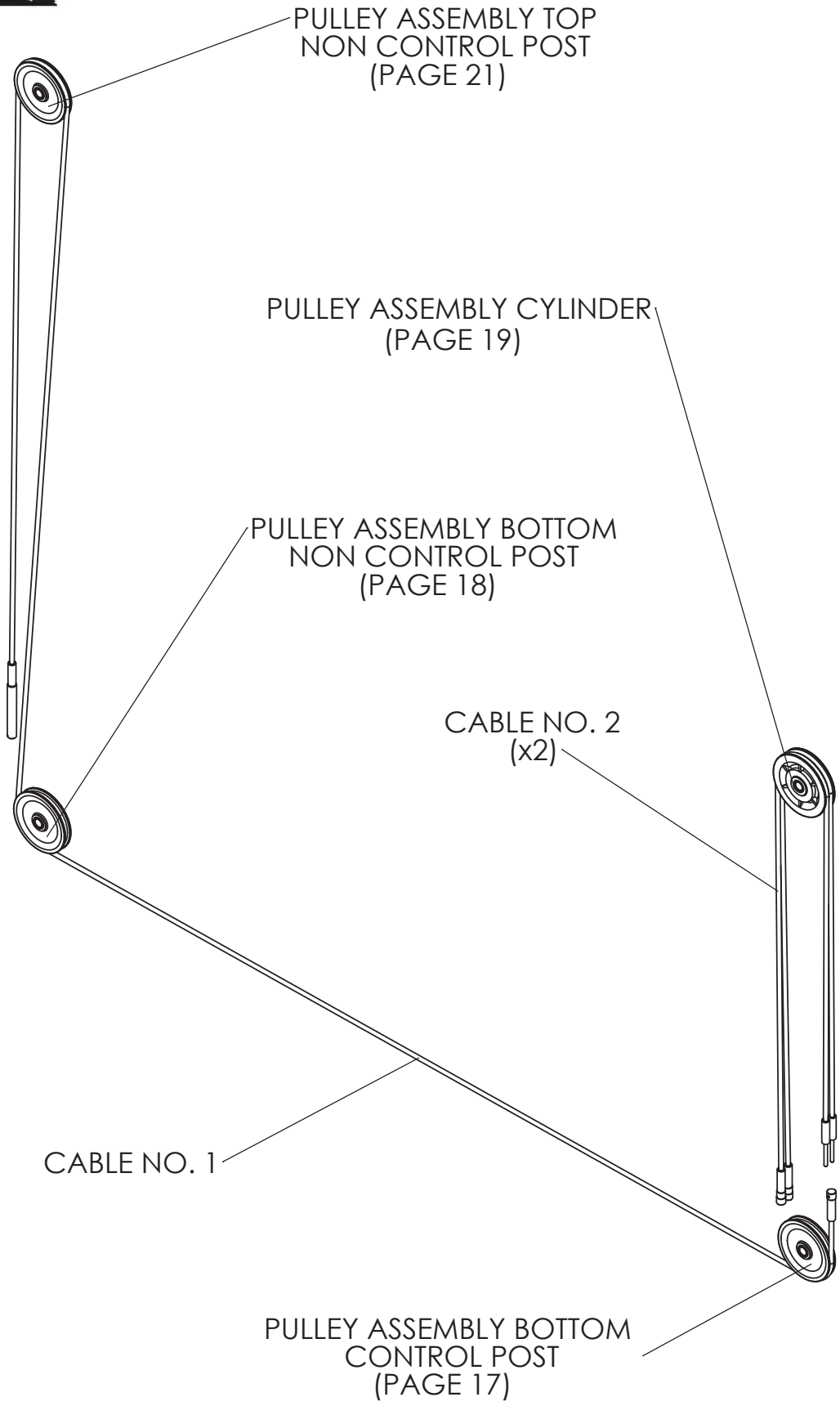
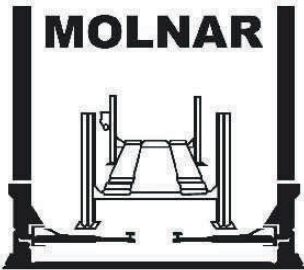


Contents

| | |
|---|----|
| Home Page..... | 3 |
| Cable and Pulley Layout..... | 4 |
| Cable Bill of Materials..... | 5 |
| Hydraulics Layout | 6 |
| Hydraulics Layout Bill of Materials | 7 |
| Carriage Control Post Page 1 | 8 |
| Carriage Control Post Bill of Materials 1..... | 9 |
| Carriage Control Post Page 2 | 10 |
| Carriage Control Post Bill of Materials 2..... | 11 |
| Carriage Non Control Post | 12 |
| Carriage Non Control Post Bill of Materials..... | 13 |
| Post Control | 14 |
| Post Control Bill of Materials..... | 15 |
| Post Non Control | 16 |
| Post Non Control Bill of Materials | 16 |
| Pulley Assembly Bottom Control Post | 17 |
| Pulley Assembly Bottom Control Post Bill of Materials..... | 17 |
| Pulley Assembly Bottom Non Control Post | 18 |
| Pulley Assembly Bottom Non Control Post Bill of Materials | 18 |
| Pulley Assembly Cylinder..... | 19 |
| Pulley Assembly Cylinder Bill of Materials..... | 20 |
| Pulley Assembly Top Non Control Post..... | 21 |
| Pulley Assembly Top Non Control Post Bill of Materials | 21 |
| Cylinder Assembly | 22 |
| Cylinder Assembly Bill of Materials | 23 |
| Power Pack Complete Assembly..... | 24 |
| Power Pack Complete Assembly Bill of Materials | 25 |
| Motor and Tank Assembly..... | 26 |
| Motor and Tank Assembly Bill of Materials..... | 27 |
| Base Assembly | 28 |
| Base Assembly Bill of Materials | 28 |
| Covers Assembly..... | 29 |
| Covers Assembly Bill of Materials..... | 29 |
| Stickers Bill of Materials | 30 |
| 415VAC 3 Phase to 240VAC Single Phase Conversion | 30 |
| Accessories | 31 |
| Extension Pad EP10 | 32 |
| Replacement Parts for EP02 Extension Pad (Superseded) | 33 |
| Foot Operated Arm Lock (Superseded) | 34 |
| Foot Operated Arm Lock (Superseded) Bill of Materials | 35 |



**TWO POST HOIST
MODEL MF1705-85A/3T SERIES 2**



PULLEY ASSEMBLY TOP
NON CONTROL POST
(PAGE 21)

PULLEY ASSEMBLY CYLINDER
(PAGE 19)

PULLEY ASSEMBLY BOTTOM
NON CONTROL POST
(PAGE 18)

CABLE NO. 2
(x2)

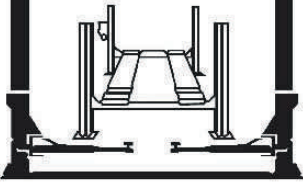
CABLE NO. 1

PULLEY ASSEMBLY BOTTOM
CONTROL POST
(PAGE 17)

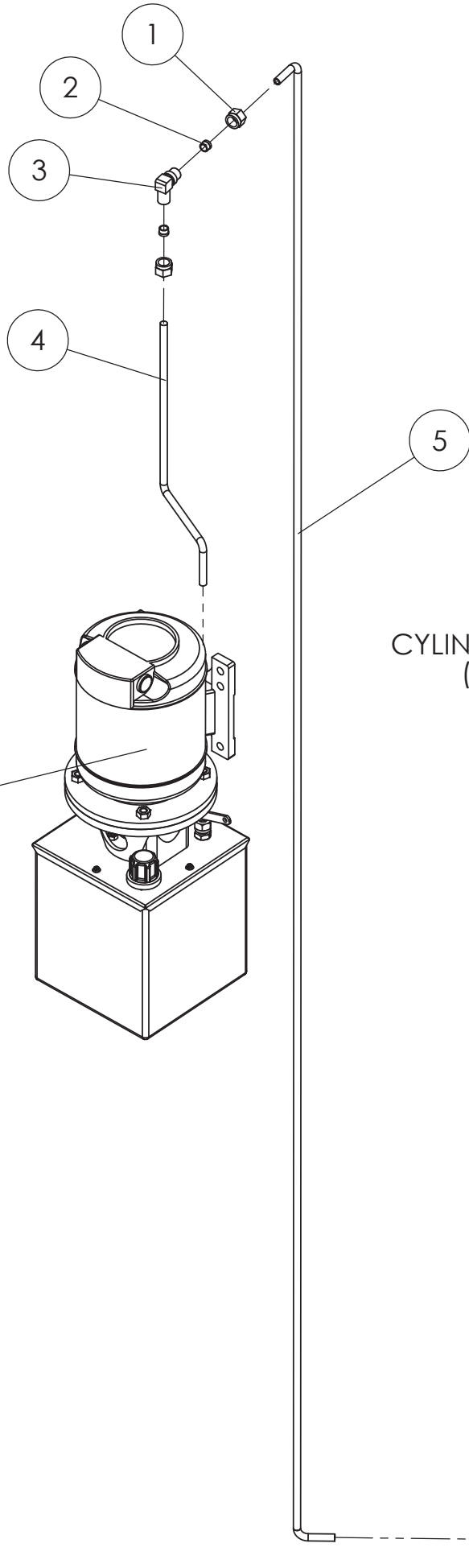
CABLES

MODEL MF1705-85A/3T SERIES 2

| ITEM # | PART DESCRIPTION | SPARE PART # |
|--------|--|--------------|
| 1 | CABLE NO. 1 (LONG CABLE 8495mm LONG) 1 CABLE PER HOIST WIDTH BETWEEN POSTS 2650mm | 85A-D-13 |
| | CABLE NO. 1 EXTRA WIDE (LONG CABLE 8795mm LONG) 1 CABLE PER HOIST WIDTH BETWEEN POSTS 2950mm | 85A-D-13EW |
| 2 | CABLE NO. 2 (SHORT CABLE 1580mm LONG) 2 CABLES PER HOIST (UP TO SERIAL NO MF 5396) | 85A-D-67 |
| | CABLE NO. 2 (SHORT CABLE 2882mm LONG) 2 CABLES PER HOIST (FROM SERIAL NO MF 5397) | 85A-D-67A |



MOTOR AND TANK
ASSEMBLY
(PAGE 26)

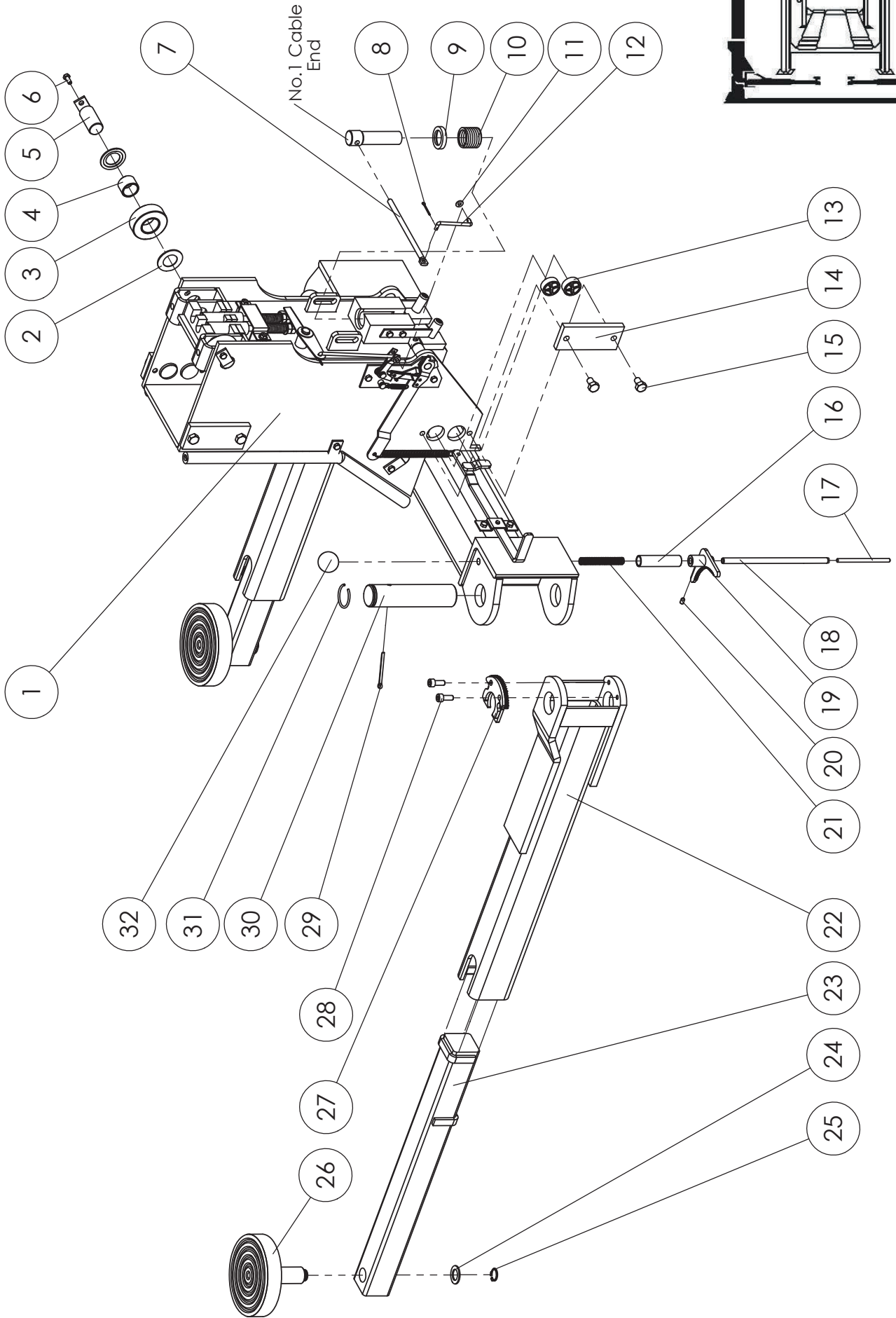
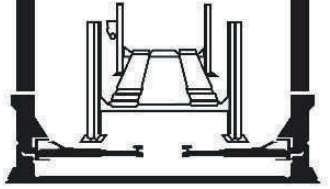


CYLINDER ASSEMBLY
(PAGE 22)



HYDRAULICS LAYOUT

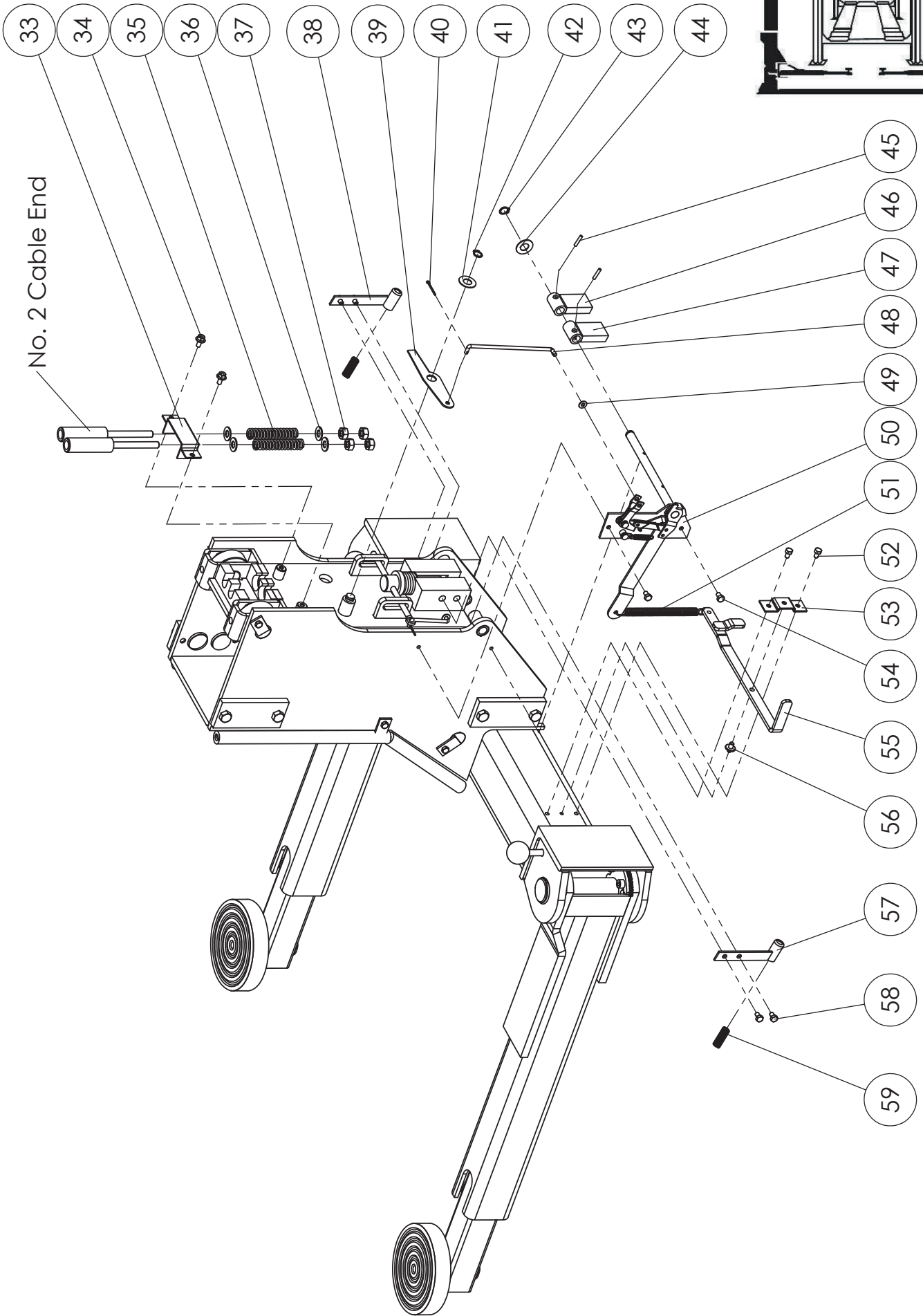
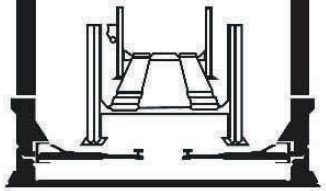
| ITEM # | PART DESCRIPTION | SPARE PART # |
|--------|---------------------------|--------------|
| 1 | NUT ADAPTOR HYDRAULIC MC6 | 85A-F-226 |
| 2 | OLIVE 3/8" | 85A-F-227 |
| 3 | ADAPTOR HYDRAULIC ELBOW | 85A-E-221 |
| 4 | HYDRAULIC PIPE (OIL TANK) | 85A-E-222 |
| 5 | HYDRAULIC PIPE LONG | 85A-E-223 |



CARRIAGE CONTROL POST

| ITEM # | PART DESCRIPTION | SPARE PART # |
|--------|--|--------------|
| 1 | CARRIAGE - CONTROL POST | 85A-KR-3 |
| 2 | SPACER | 85A-KL-217 |
| 3 | ROLLER (INCL. BUSH) | 85A-KL-216R |
| 4 | BUSH ROLLER | 85A-KL-216B |
| 5 | PIN ROLLER | 85A-KL-22 |
| 6 | BOLT M6x10mm | 85A-D-4 |
| 7 | CABLE AXLE | 85A-D-74 |
| 8 | SPLIT PIN M2.5x12mm | 85A-KL-33 |
| 9 | CAP LONG CABLE SLEEVE | 85A-D-75 |
| 10 | SPRING LONG CABLE | 85A-D-77 |
| 11 | WASHER FLAT M5 | 85A-D-78 |
| 12 | LINKAGE TO LONG CABLE | 85A-L-79 |
| 13 | WEAR PAD ROUND (FROM S/N MF4014) | 85A-KL-42R |
| | WEAR PAD RECTANGULAR (UP TO S/N MF4013) | 85A-KL-42 |
| 14 | BRACKET WEAR PAD | 85A-KL-43 |
| 15 | BOLT M10X15 HHD | 85A-KL-44 |
| 16 | SLEEVE SPRING HOUSING | 2008025 |
| 17 | SHAFT AUTO ARM LOCK PLASTIC | 2008032 |
| 18 | SHAFT AUTO ARM LOCK | 2008024 |
| 19 | BRACKET CARRIAGE LOCK | 2008026 |
| 20 | GRUB SCREW M6x8mm | 1029001 |
| 21 | SPRING 25 COIL 12.7ODx1.4WD | 4488-TB-53 |
| 22 | LIFTING ARM CARRIAGE | 85A-J-54 |
| 23 | LIFTING ARM INNER | 85A-J-53 |
| 24 | WASHER (ZINC PLATED) | 5017002 |
| 25 | CIRCLIP 19mm (DIN 471 - 19) | JB87-10 |
| 26 | PICK UP PAD (140MM DIAMETER) | JJ3PUP |
| 27 | BRACKET LIFTING ARM LOCK | 2008029 |
| 28 | BOLT M8x20mm | 1011002 |
| 29 | SPLIT PIN M4x45mm (LIFTING ARM PIVOT PIN) | 85A-J-251 |
| 30 | PIN PIVOT LIFTING ARM | 85A-J-50 |
| 31 | RING SNAP ROUND 32mm ID | 85A-J-51 |
| 32 | KNOB BLACK 3/8" BSW | 4488-PP-126B |
| | AUTO ARM LOCKING KIT x4 (INCL. ITEMS # 16 SLEEVE SPRING HOUSING (x4), # 17 SHAFT AUTO ARM LOCK PLASTIC (x4), # 18 SHAFT AUTO ARM LOCK (x4), # 19 BRACKET CARRIAGE LOCK (x4), # 20 GRUB SCREW (x4), # 21 SPRING (x4), # 27 BRACKET LIFTING ARM LOCK (x4), # 28 BOLT (x8), # 32 KNOB (x4)) | 2008004 |

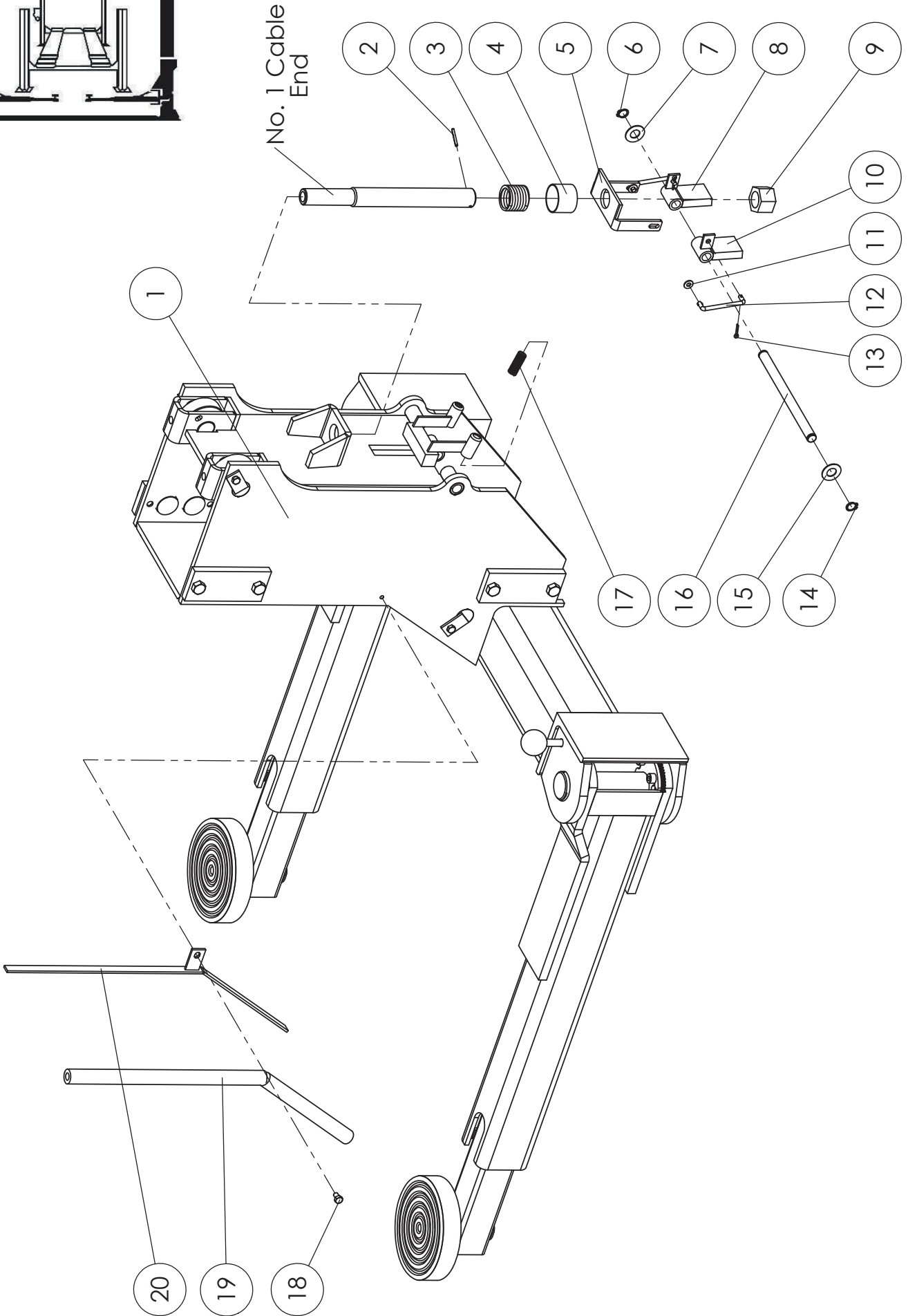
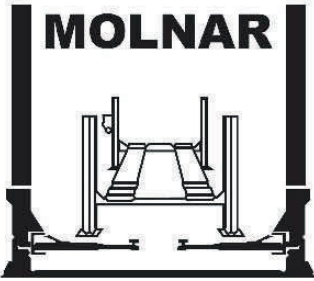
* FOR SUPERSEDED FOOT OPERATED ARM LOCK SEE PAGE 34



No. 2 Cable End

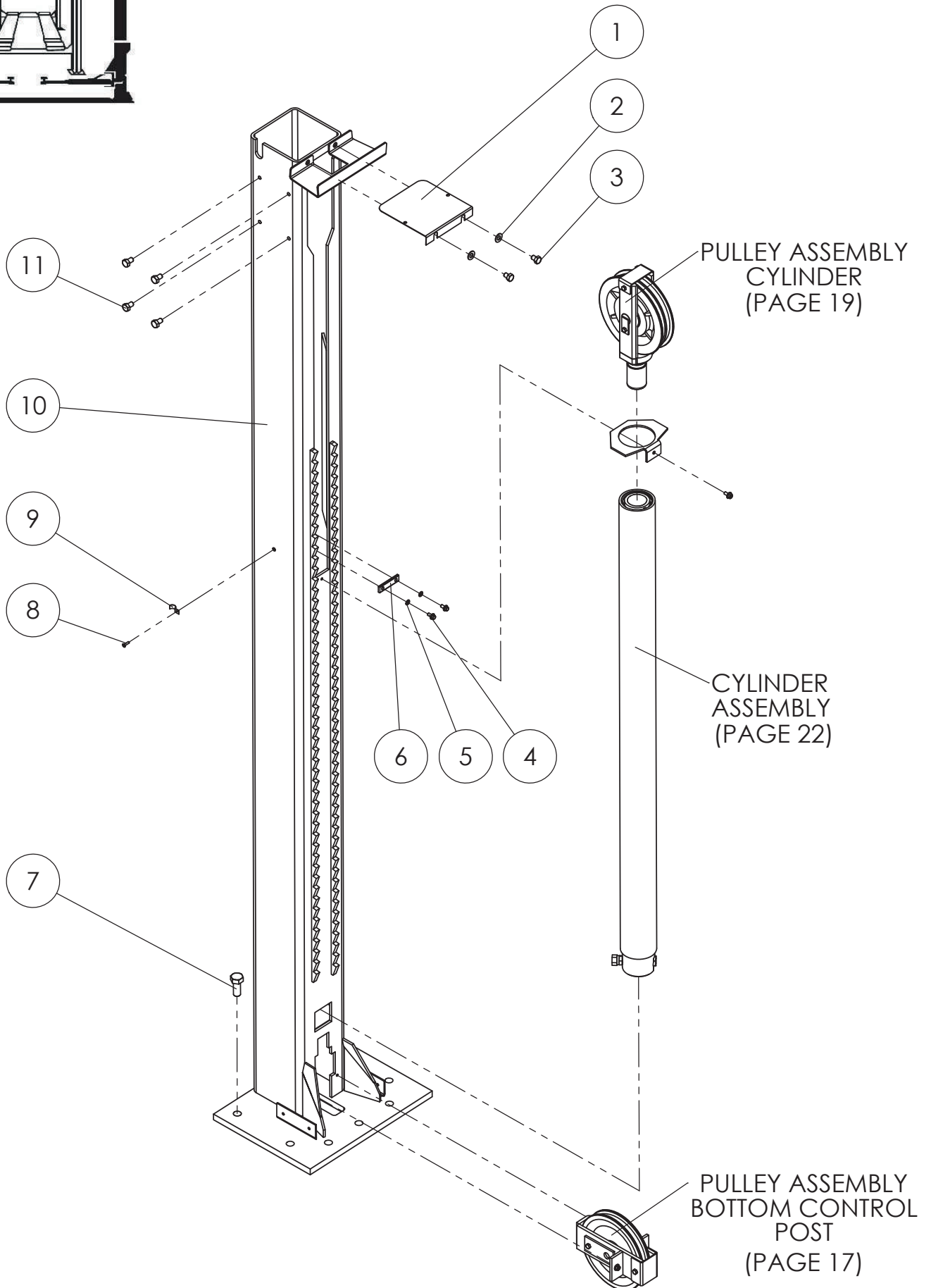
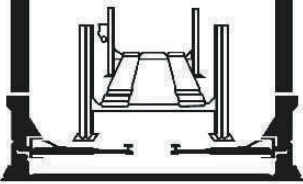
CARRIAGE CONTROL POST

| ITEM # | PART DESCRIPTION | SPARE PART # |
|--------|--|--------------|
| 33 | BRACKET CABLE | 85A-D-129 |
| 34 | BOLT M6x12mm | 85A-D-11 |
| 35 | SPRING FOR SHORT CABLES | 85A-D-131 |
| 36 | WASHER FLAT M10 | 85A-D-132 |
| 37 | NUT SHORT CABLE 3/8" WHITWORTH | 85A-D-133 |
| 38 | SPRING HOLDER RIGHT | 85A-KR-135 |
| 39 | SAFETY PIVOT ARM | 85A-KR-140 |
| 40 | SPLIT PIN M2.5x12mm | 85A-KL-33 |
| 41 | WASHER FLAT 1/2" ZC | 85A-KR-128 |
| 42 | CIRCLIP 12mm (DIN 471-12) | 85A-J-56 |
| 43 | CIRCLIP 12mm (DIN 471-12) | 85A-J-56 |
| 44 | WASHER FLAT 1/2" ZC | 85A-KR-128 |
| 45 | PIN SAFETY TOGGLE | 85A-KR-127 |
| 46 | TOGGLE SAFETY RH CONTROL | 85A-KR-125 |
| 47 | TOGGLE SAFETY LH CONTROL | 85A-KR-126 |
| 48 | LINKAGE TO SHORT CABLES | 85A-L-142 |
| 49 | WASHER FLAT M5 | 85A-D-78 |
| 50 | SAFETY ACTUATING ASSEMBLY | 85A-L-146 |
| 51 | SPRING SAFETY ACTUATING | 85A-L-148S |
| 52 | BOLT M6x12mm | 85A-D-11 |
| 53 | BRACKET SAFETY ON/OFF | 85A-KR-150 |
| 54 | BOLT M6x10mm | 85A-D-4 |
| 55 | ARM SAFETY ON/OFF | 85A-KR-152 |
| | SAFETY ON/OFF ARM ASSEMBLY (INCL. ITEMS # 52 BOLT (x2), # 53 BRACKET (x1), # 55 ARM (x1), # 56 PIN PIVOT (x1)) | 85A-KR-152A |
| 56 | PIN PIVOT SAFETY ON/OFF | 85A-KR-250 |
| 57 | SPRING HOLDER LEFT | 85A-KR-136 |
| 58 | BOLT M6x10mm | 85A-KL-23 |
| 59 | SPRING SAFETY TOGGLE (2 PER CARRIAGE) | 85A-KL-27 |



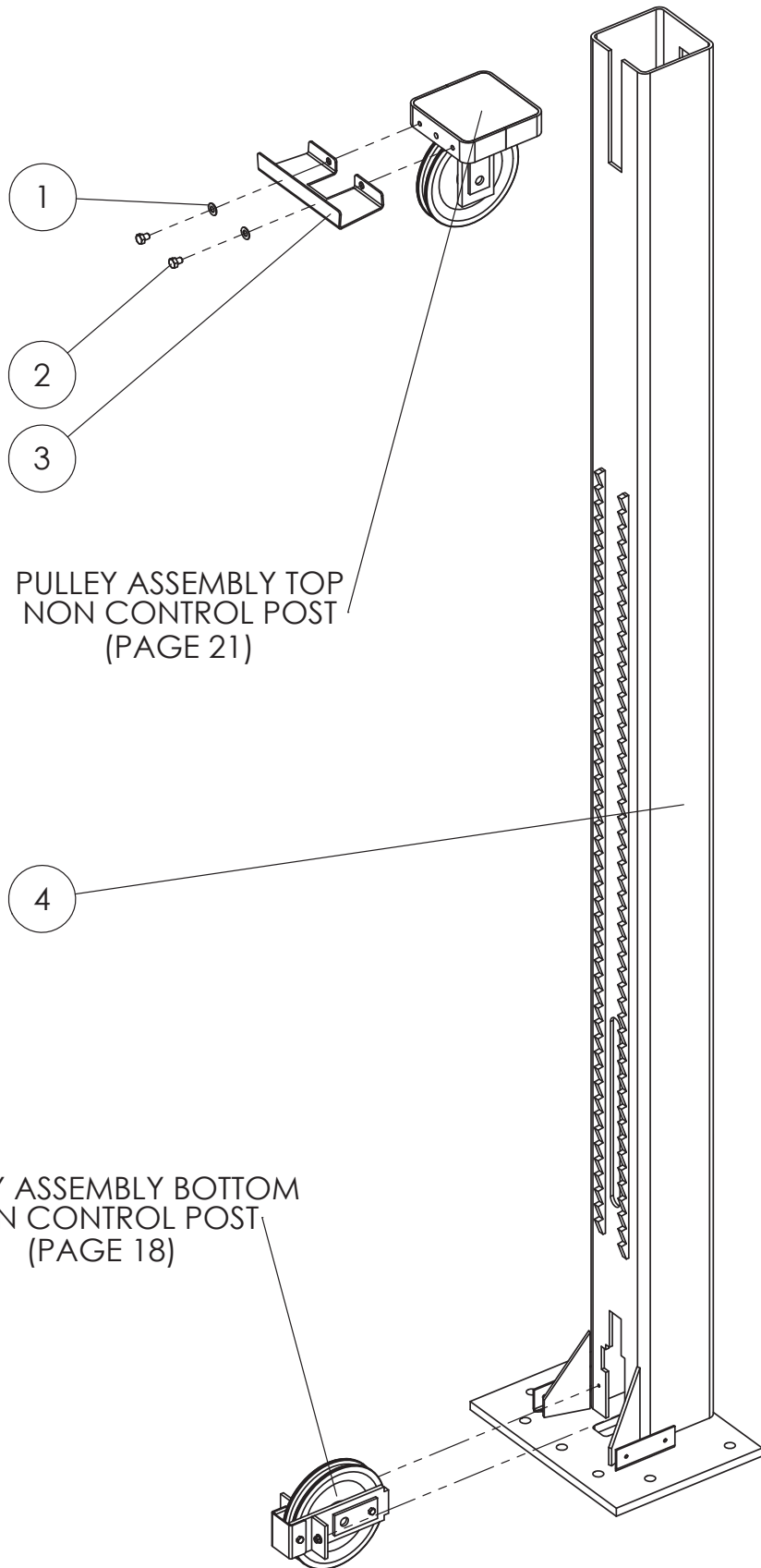
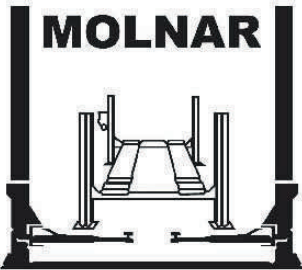
CARRIAGE NON CONTROL POST

| ITEM # | PART DESCRIPTION | SPARE PART # |
|--------|--|--------------|
| 1 | CARRIAGE - NON CONTROL POST | 85A-KL-2 |
| 2 | ROLL PIN 1/8"x1" | 85A-D-13RP |
| 3 | SPRING FOR LONG CABLE | 85A-D-25 |
| 4 | SLEEVE CABLE SPRING | 85A-D-24 |
| 5 | BRACKET | 85A-D-28 |
| 6 | CIRCLIP 12mm (DIN 471-12) | 85A-J-56 |
| 7 | WASHER FLAT 1/2" ZC | 85A-KR-128 |
| 8 | TOGGLE SAFETY RH NON CONTROL POST | 85A-KL-32 |
| 9 | NUT LONG CABLE 1" WHITWORTH | 85A-D-36 |
| 10 | TOGGLE SAFETY LH NON CONTROL POST | 85A-KL-31 |
| 11 | WASHER FLAT M5 | 85A-D-78 |
| 12 | LINKAGE SAFETY TOGGLE (2 PER CARRIAGE) | 85A-KL-30 |
| 13 | SPLIT PIN M2.5x12mm | 85A-KL-33 |
| 14 | CIRCLIP 12mm (DIN 471-12) | 85A-J-56 |
| 15 | WASHER FLAT 1/2" ZC | 85A-KR-128 |
| 16 | PIN SAFETY TOGGLE | 85A-KL-35 |
| 17 | SPRING SAFETY TOGGLE (2 PER CARRIAGE) | 85A-KL-27 |
| 18 | BOLT M6x10mm | 85A-D-4 |
| 19 | RUBBERS DOOR PROTECTORS (4 PER SET) | 85A-KK-225R |
| 20 | BRACKET DOOR PROTECTORS (4 PER SET) | 85A-KK-225B |
| | DOOR PROTECTORS (INCL. BRACKETS & RUBBERS - 4 PER SET) | 85A-KK-225 |



POST CONTROL

| ITEM # | PART DESCRIPTION | SPARE PART # |
|--------|-----------------------------|--------------|
| 1 | PLATE TOP | 85A-B-81 |
| 2 | WASHER FLAT M10 | 85A-D-132 |
| 3 | BOLT M10x12mm | 85A-C-41 |
| 4 | BOLT M6x12mm | 85A-D-11 |
| 5 | WASHER INTERNAL LOCK M6 | 4488-C-76 |
| 6 | BRACKET CABLE RETAINING | 85A-E-116 |
| 7 | BOLT M16x40mm | 85A-B-16 |
| 8 | SCREW 8G X 5/8" COUNTERSUNK | 85A-E-118 |
| 9 | SADDLE HYDRAULIC PIPE | 85A-E-117 |
| 10 | POST - CONTROL | 85A-B-119 |
| 11 | BOLT M10x12mm | 85A-C-41 |



1

2

3

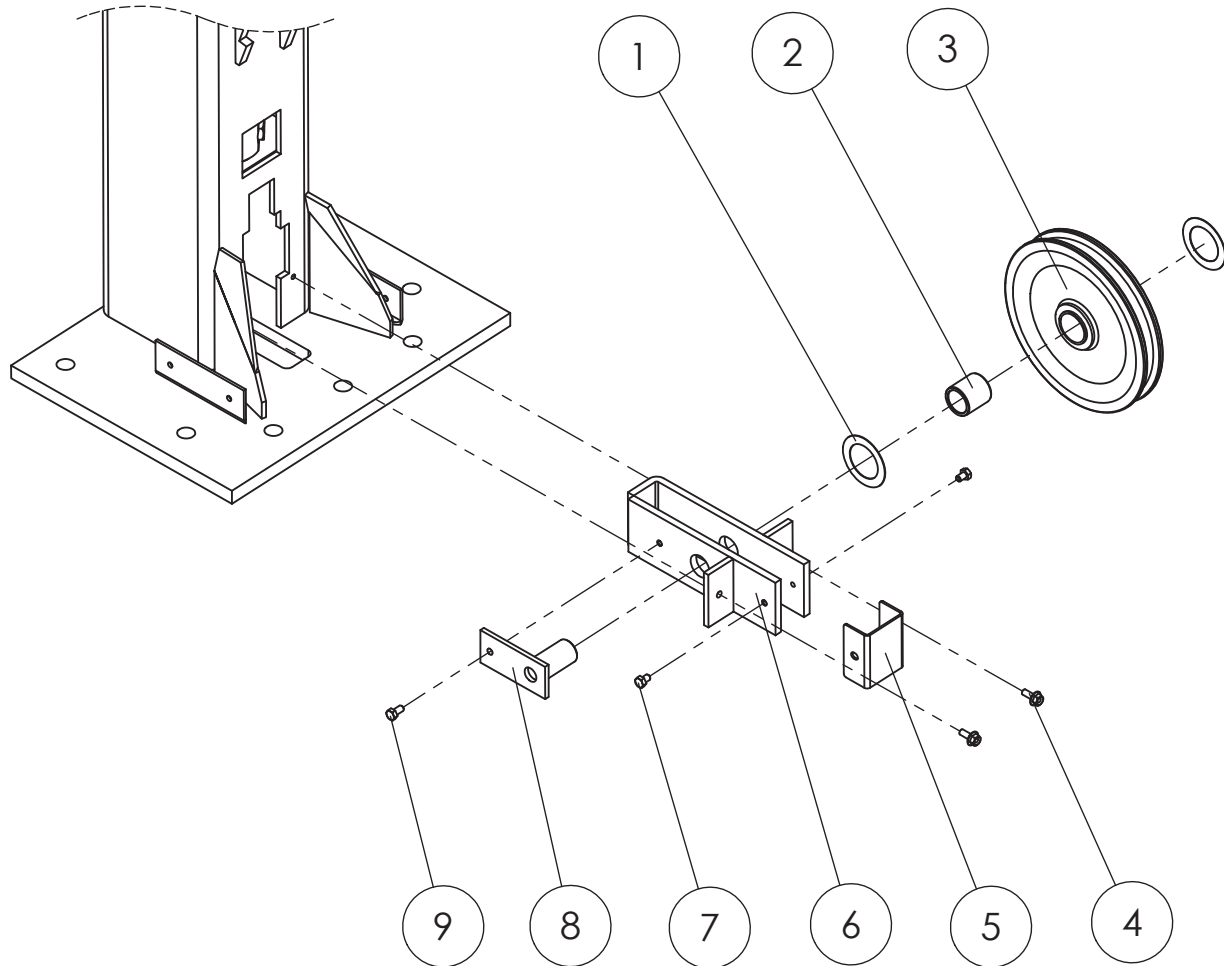
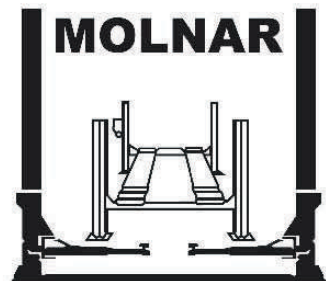
4

PULLEY ASSEMBLY TOP
NON CONTROL POST
(PAGE 21)

PULLEY ASSEMBLY BOTTOM
NON CONTROL POST
(PAGE 18)

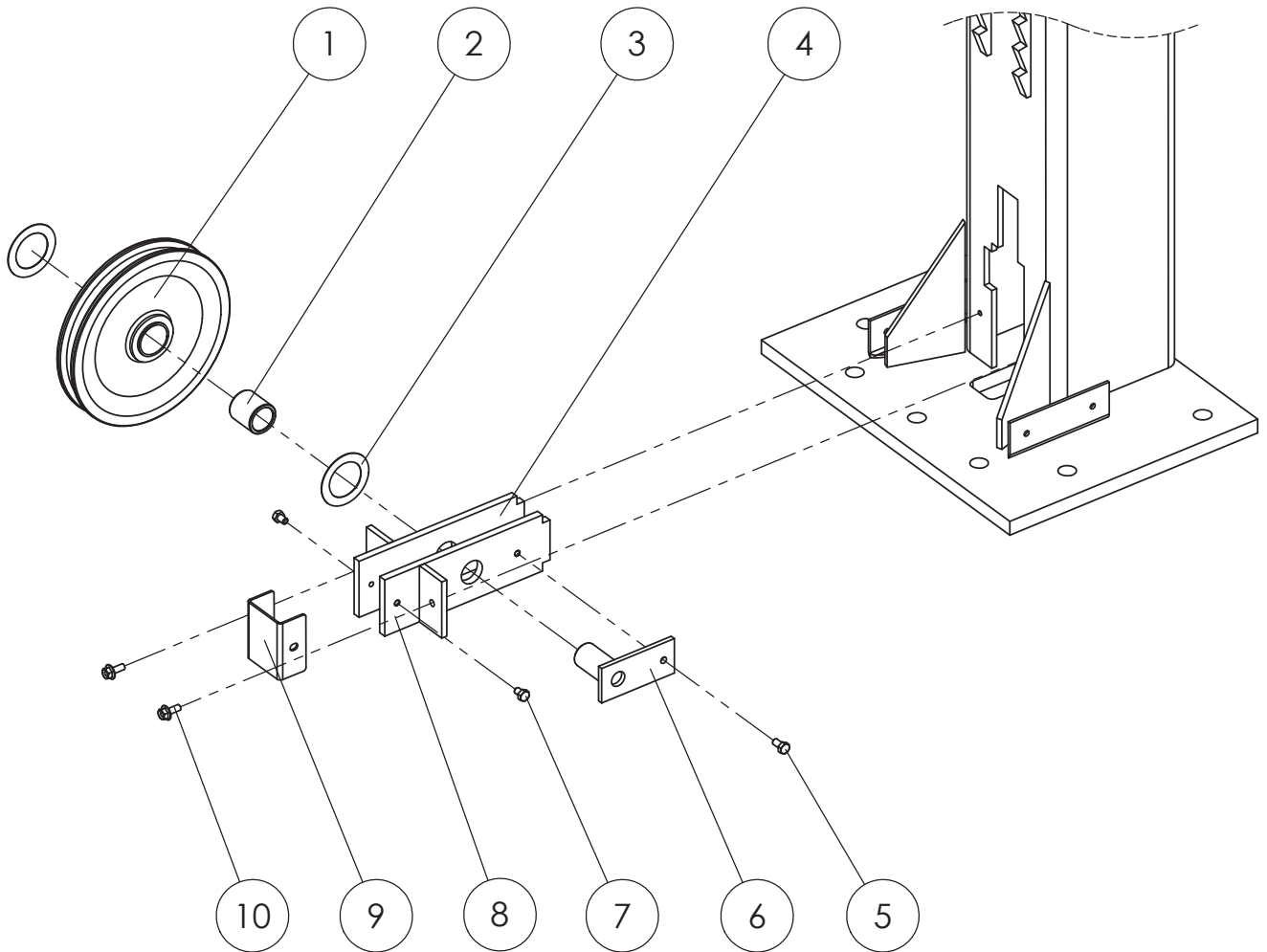
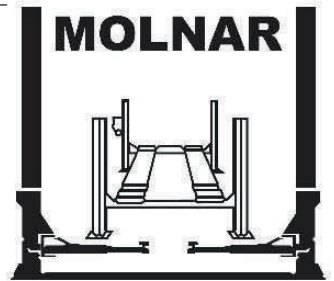
POST NON CONTROL

| ITEM # | PART DESCRIPTION | SPARE PART # |
|--------|------------------------|--------------|
| 1 | WASHER FLAT M10 | 85A-D-132 |
| 2 | BOLT M10x12mm | 85A-C-41 |
| 3 | BRACKET COVER MOUNTING | 85A-B-151 |
| 4 | POST - NON CONTROL | 85A-C-17 |



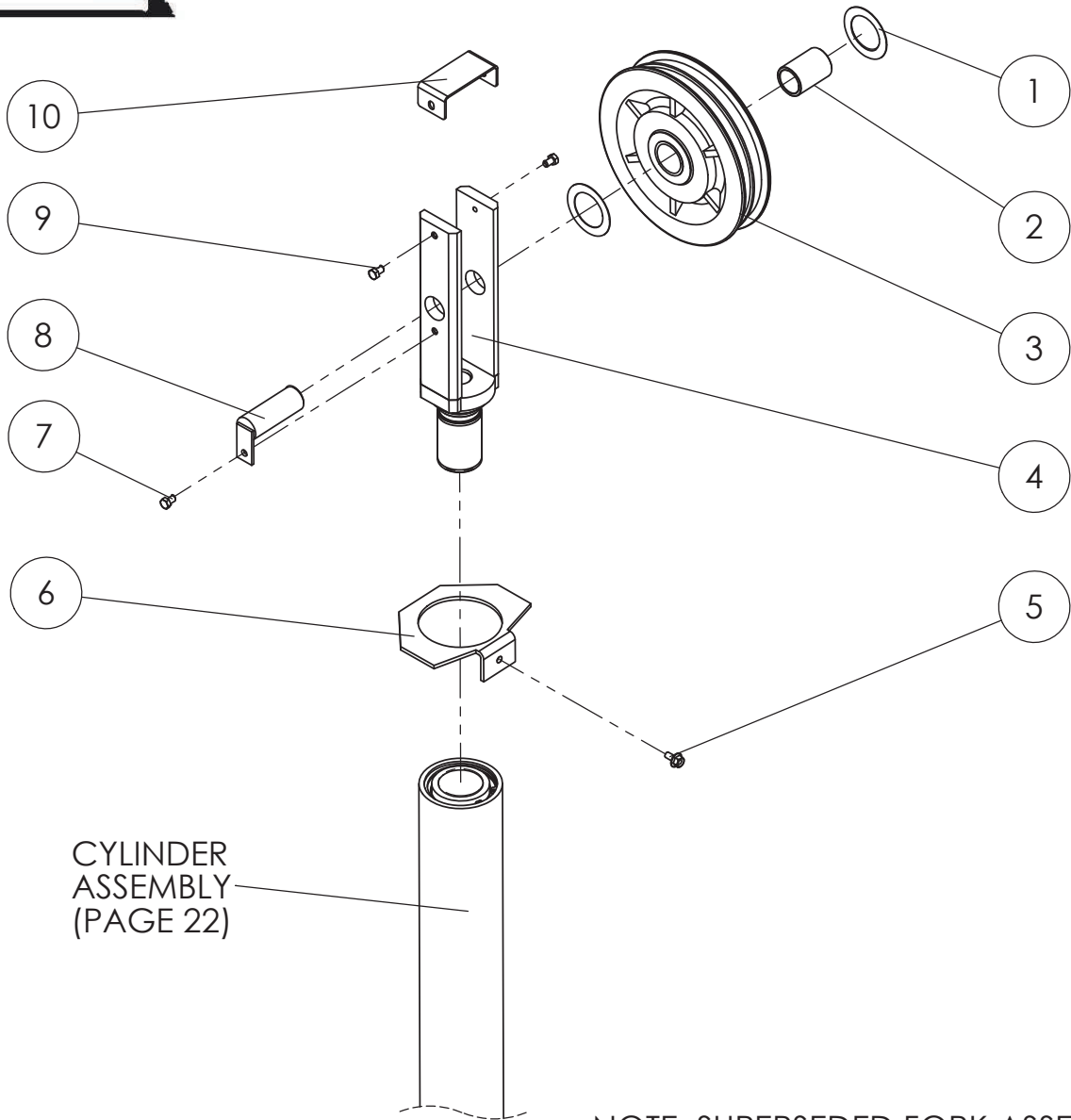
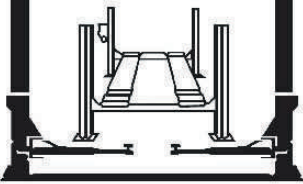
PULLEY ASSEMBLY BOTTOM CONTROL POST

| ITEM # | PART DESCRIPTION | SPARE PART # |
|--------|---|--------------|
| 1 | WASHER SPACER 1 1/2"x2 1/4"x22G | 85A-D-64 |
| 2 | BUSH SINGLE GROOVE PULLEY | 85A-D-12 |
| 3 | PULLEY SINGLE GROOVE (INCLUDES BUSH) | 85A-D-9 |
| | PULLEY SINGLE GROOVE ASSEMBLY (INCL. ITEMS # 1 WASHER SPACER (x2), # 2 BUSH (x1) , # 3 PULLEY (x1), # 8 PIN (x1)) | 85A-D-9A |
| 4 | BOLT M6x16mm | 85A-D-6 |
| 5 | CAP BOTTOM PULLEY | 85A-D-5 |
| 6 | BRACKET BOTTOM PULLEY CONTROL POST | 85A-D-122 |
| 7 | BOLT M6x10mm | 85A-D-4 |
| 8 | PIN BOTTOM PULLEY | 85A-D-10 |
| 9 | BOLT M6x12mm | 85A-D-11 |



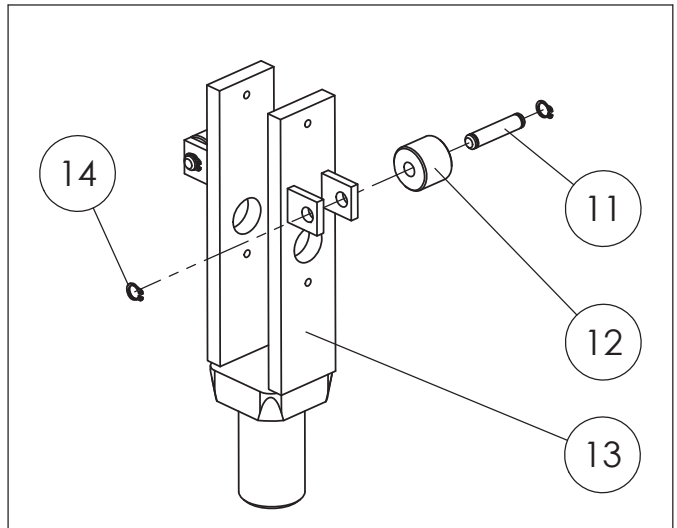
PULLEY ASSEMBLY BOTTOM NON CONTROL POST

| ITEM # | PART DESCRIPTION | SPARE PART # |
|--------|--|--------------|
| 1 | PULLEY SINGLE GROOVE (INCLUDES BUSH) | 85A-D-9 |
| | PULLEY SINGLE GROOVE ASSEMBLY (INCL. ITEMS # 1 PULLEY (x1), # 2 BUSH (x1), # 3 WASHER SPACER (x2), # 6 PIN (x1)) | 85A-D-9A |
| 2 | BUSH SINGLE GROOVE PULLEY | 85A-D-12 |
| 3 | WASHER SPACER 1 1/2"x2 1/4"x22G | 85A-D-64 |
| 4 | BRACKET PULLEY LEFT NON CONTROL POST | 85A-D-7 |
| 5 | BOLT M6x12mm | 85A-D-11 |
| 6 | PIN BOTTOM PULLEY | 85A-D-10 |
| 7 | BOLT M6x10mm | 85A-D-4 |
| 8 | BRACKET PULLEY RIGHT NON CONTROL POST | 85A-D-8 |
| 9 | CAP BOTTOM PULLEY | 85A-D-5 |
| 10 | BOLT M6x16mm | 85A-D-6 |



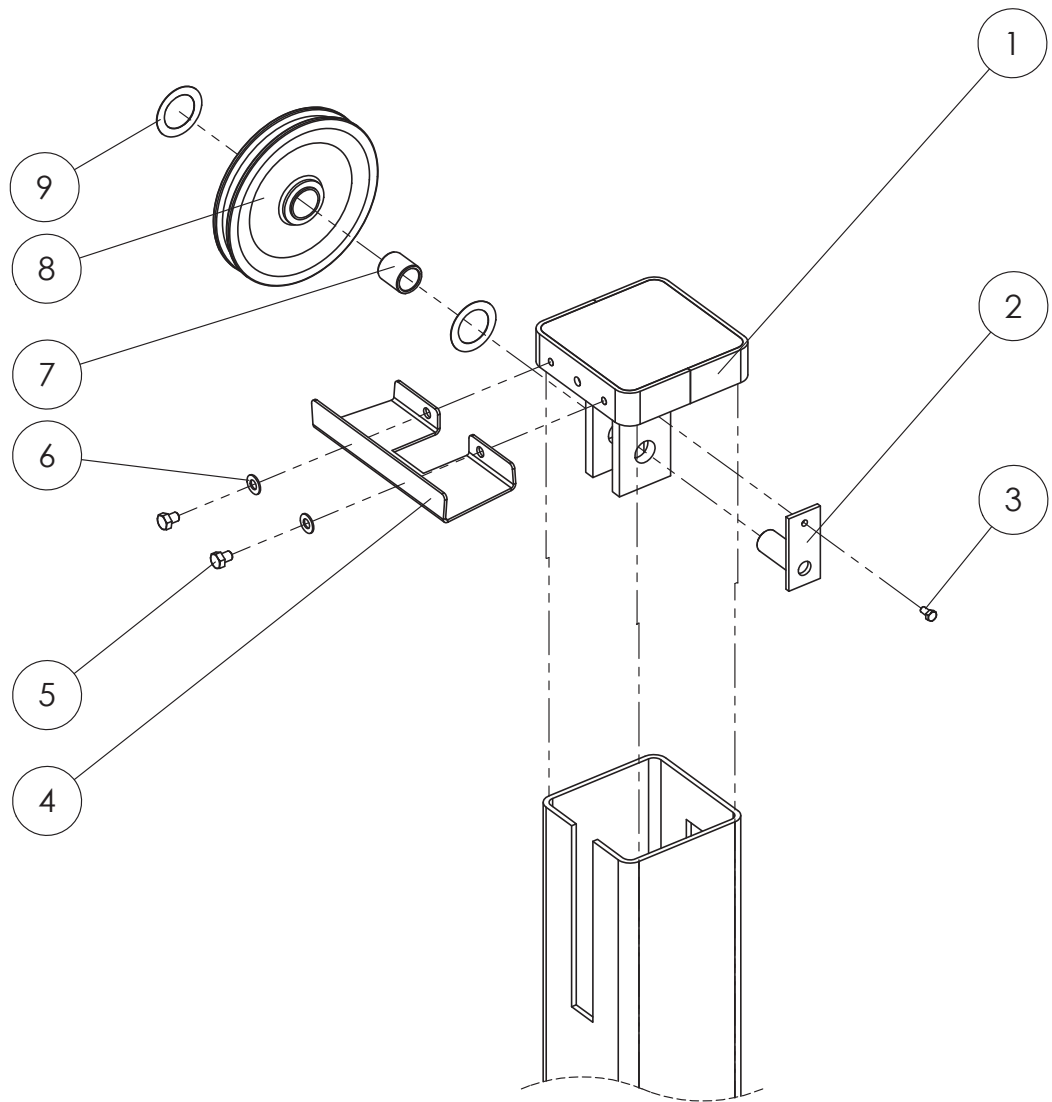
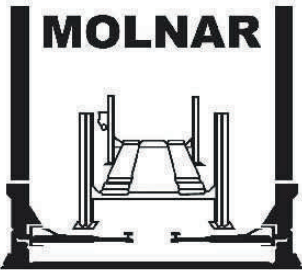
CYLINDER ASSEMBLY (PAGE 22)

NOTE: SUPERSEDED FORK ASSEMBLY



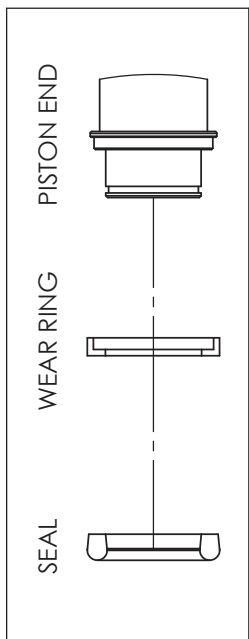
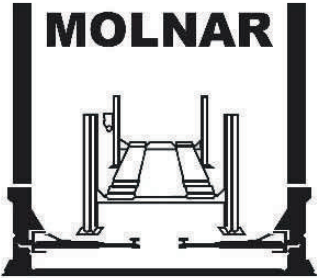
PULLEY ASSEMBLY CYLINDER

| ITEM # | PART DESCRIPTION | SPARE PART # |
|--------|--|--------------|
| 1 | WASHER SPACER 1 1/2"x2 1/4"x22G | 85A-D-64 |
| 2 | BUSH TWIN GROOVE PULLEY | 85A-D-65 |
| 3 | PULLEY TWIN GROOVE (INCLUDES BUSH) | 85A-D-66 |
| | PULLEY TWIN GROOVE ASSEMBLY (INCL. ITEMS # 1 WASHER SPACER (x2), # 2 BUSH (x1), # 3 PULLEY TWIN GROOVE (x1), # 8 PIN (x1)) | 85A-D-66A |
| 4 | FORK (INCLUDES FORK SLEEVE AND GRUB SCREW) FROM SERIAL NUMBER MF 13,903 | 85A-D-69N |
| | FORK ASSEMBLY (INCL. ITEMS # 1 WASHER SPACER (x2), # 2 BUSH (x1), # 3 PULLEY TWIN GROOVE (x1), # 4 FORK (x1), # 7 BOLT (x1), # 8 PIN (x1), # 9 BOLT (x2), # 10 CAP (x1)) | 85A-D-69A |
| 5 | BOLT M6x12mm | 85A-D-11 |
| 6 | BRACKET CYLINDER SUPPORT RING | 85A-EE-275 |
| 7 | BOLT M6x12mm | 85A-D-11 |
| 8 | PIN TWIN GROOVE PULLEY | 85A-D-72 |
| 9 | BOLT M6x10mm | 85A-D-4 |
| 10 | CAP CYLINDER PULLEY | 85A-D-63 |
| 11 | PIN SIDE ROLLER (SUPERSEDED) | 85A-E-68 |
| 12 | ROLLER SIDE (2 PER HOIST) (SUPERSEDED) | 85A-E-70 |
| 13 | FORK (SUPERSEDED) | 85A-D-69S |
| 14 | CIRCLIP 10mm (DIN 471-10) | 85A-J-46 |
| | FORK ASSEMBLY (SUPERSEDED) (INCL. ITEMS # 11 PIN (x2), # 12 ROLLER (x2), # 13 FORK (x1), # 14 CIRCLIP (x4)) | 85A-D-69AS |

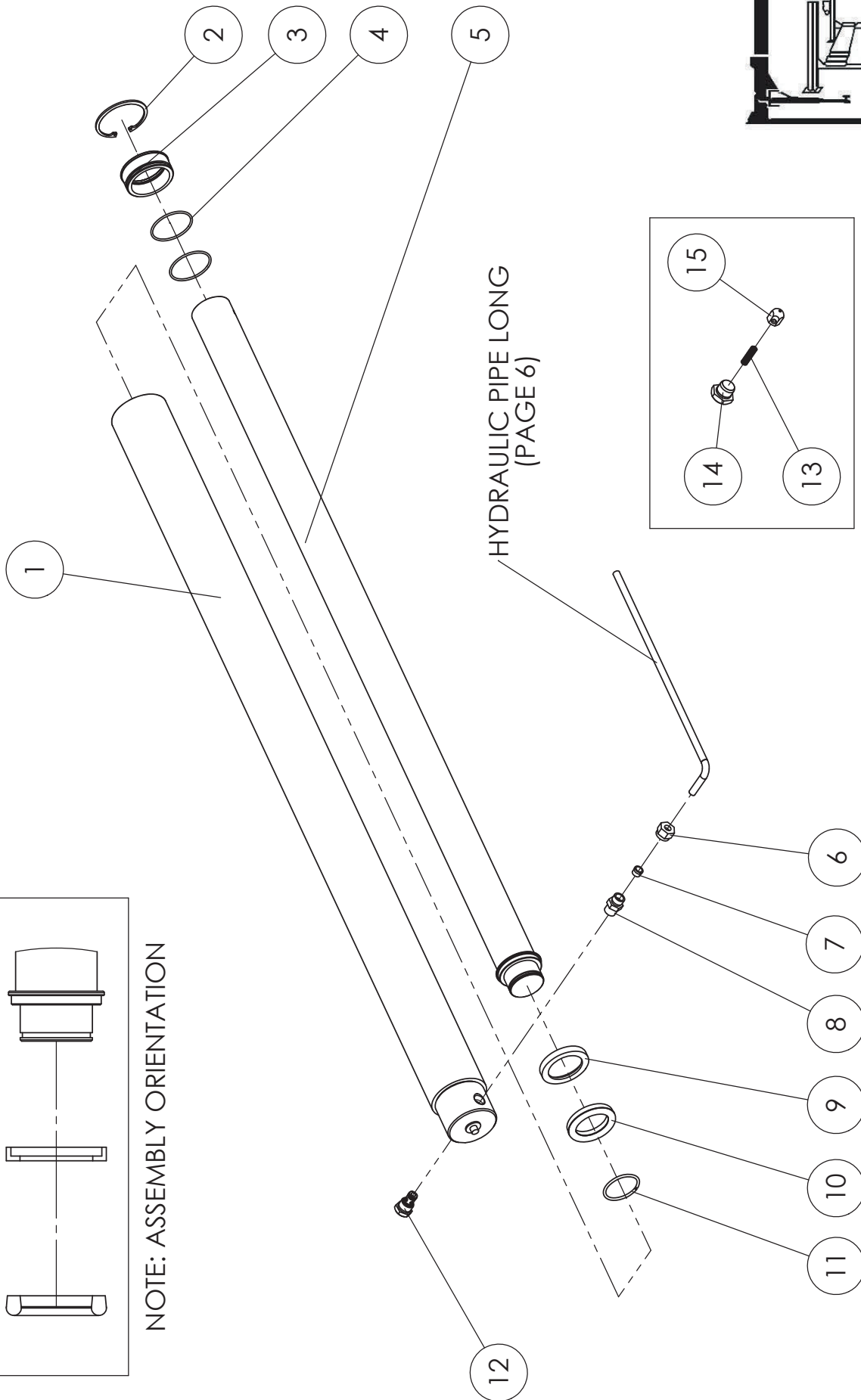


PULLEY ASSEMBLY TOP NON CONTROL POST

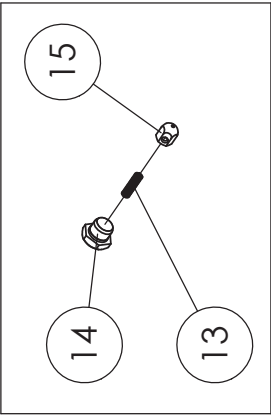
| ITEM # | PART DESCRIPTION | SPARE PART # |
|--------|--|--------------|
| 1 | BRACKET TOP PULLEY NON CONTROL POST | 85A-D-39 |
| 2 | PIN TOP PULLEY NON CONTROL POST | 85A-D-38 |
| 3 | BOLT M6x12mm | 85A-D-11 |
| 4 | BRACKET COVER MOUNTING | 85A-B-151 |
| 5 | BOLT M10x12mm | 85A-C-41 |
| 6 | WASHER FLAT M10 | 85A-D-132 |
| 7 | BUSH SINGLE GROOVE PULLEY | 85A-D-12 |
| 8 | PULLEY SINGLE GROOVE (INCLUDES BUSH) | 85A-D-9 |
| | PULLEY SINGLE GROOVE ASSEMBLY (INCL. ITEMS # 2 PIN (x1), # 7 BUSH (x1), # 8 PULLEY (x1), # 9 WASHER SPACER (x2)) | 85A-D-9A |
| 9 | WASHER SPACER 1 1/2"x2 1/4"x22G | 85A-D-64 |



NOTE: ASSEMBLY ORIENTATION



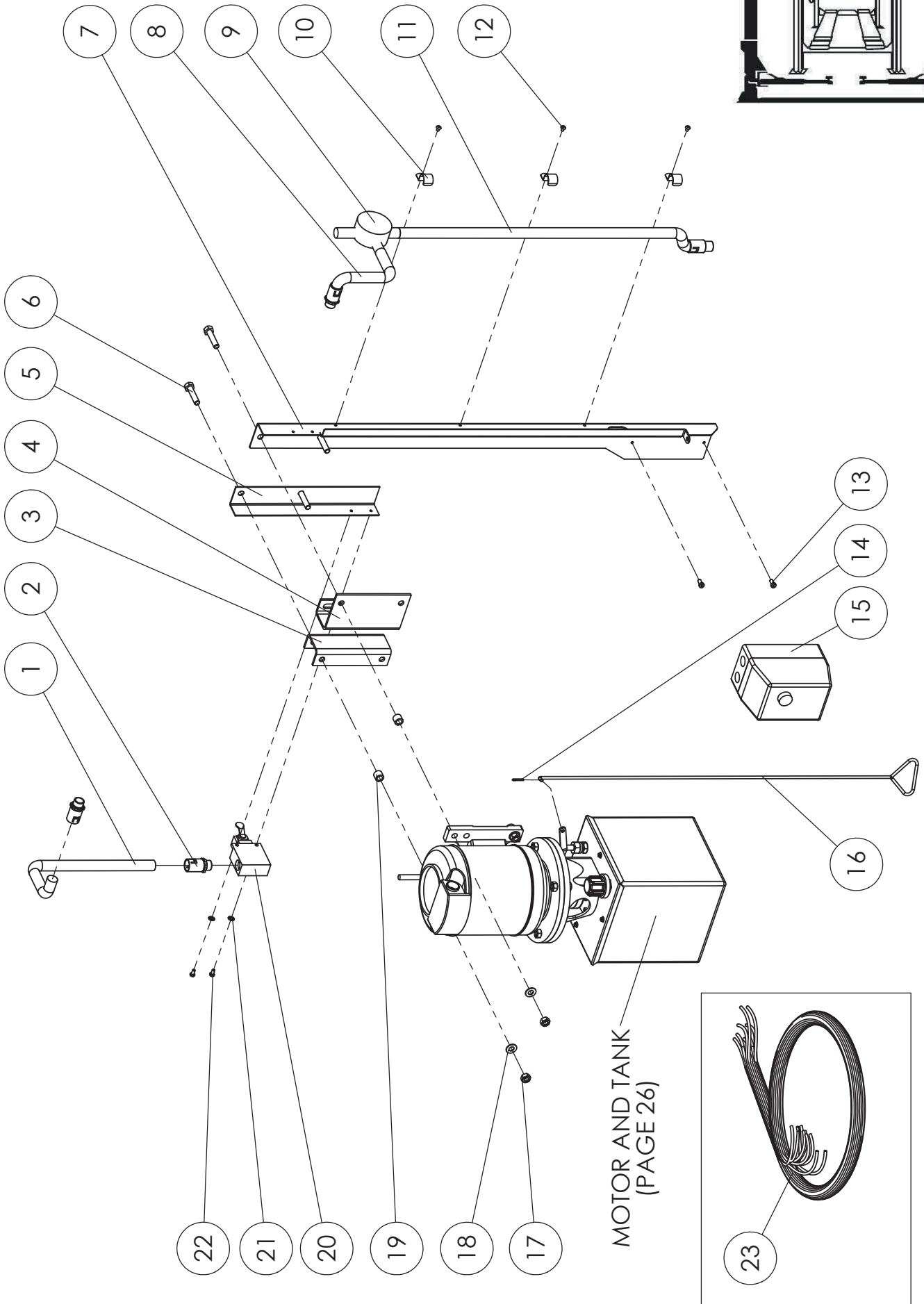
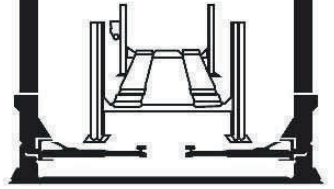
HYDRAULIC PIPE LONG
(PAGE 6)



NOTE: SUPERSEDED FLOW
RESTRICTOR ASSEMBLY

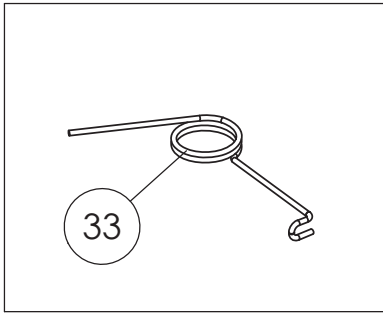
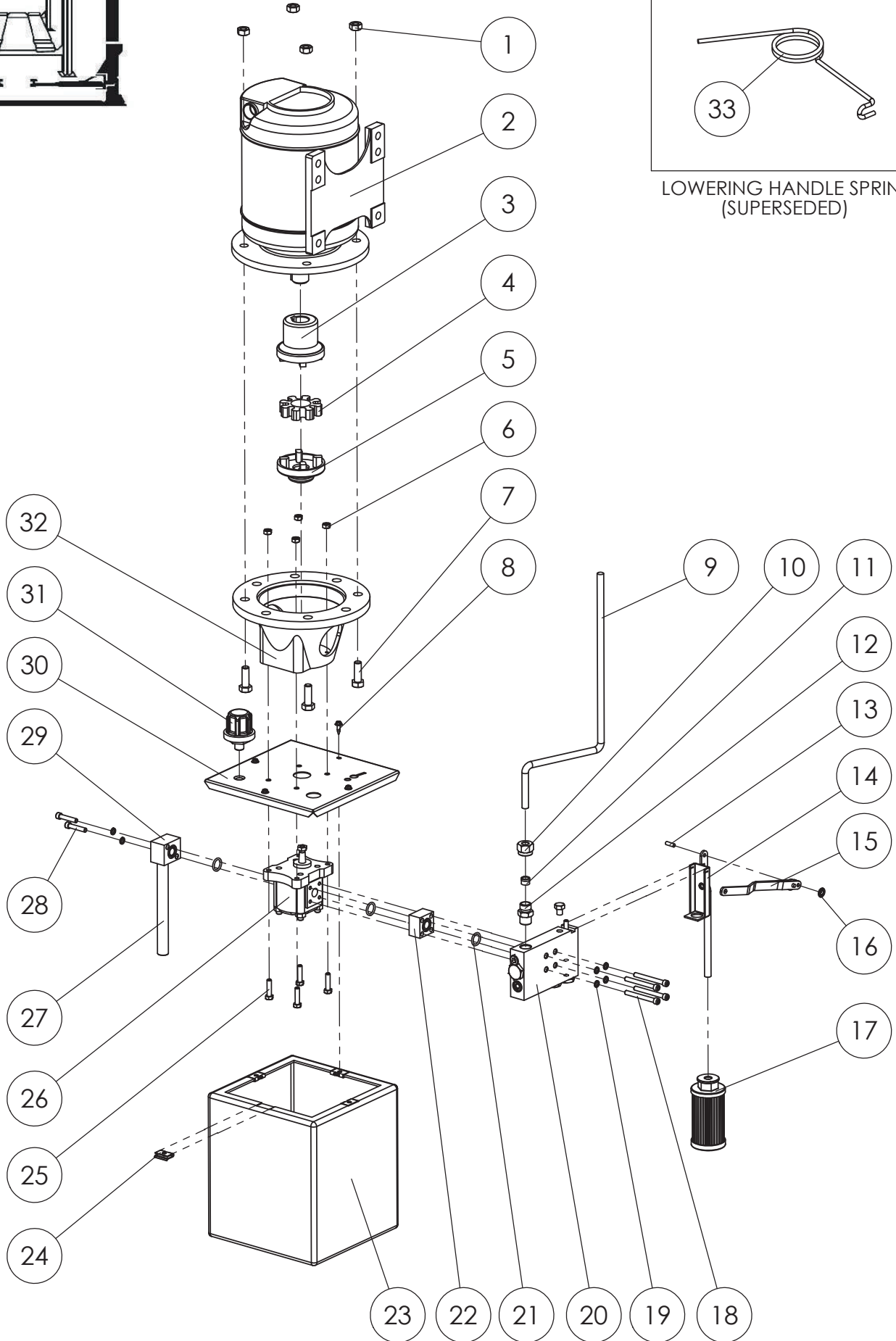
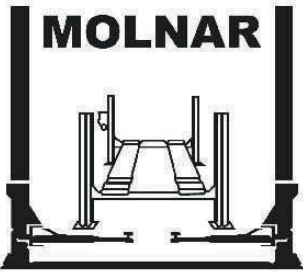
CYLINDER ASSEMBLY

| ITEM # | PART DESCRIPTION | SPARE PART # |
|--------|---|--------------|
| 1 | CYLINDER BARREL | 85A-E-108 |
| | HYDRAULIC CYLINDER ASSEMBLY INCLUDES ALL ITEMS EXCEPT HYDRAULIC PIPE | 85A-E-108A |
| 2 | CIRCLIP 75mm (DIN 472-072) | 85A-E-105 |
| 3 | GUIDE BUSH 58mm ID | 85A-E-107 |
| 4 | O'RING (BS-140) | 85A-E-106 |
| 5 | PISTON ROD ASSEMBLY | 85A-E-104 |
| 6 | NUT ADAPTOR HYDRAULIC MC6 | 85A-F-226 |
| 7 | OLIVE 3/8" | 85A-F-227 |
| 8 | ADAPTOR HYDRAULIC STRAIGHT | 85A-E-220 |
| 9 | WEAR RING | 85A-E-110 |
| 10 | SEAL 2 3/4" OD | 85A-E-111 |
| | CYLINDER SEAL KIT INCLUDES (ITEMS # 3 GUIDE BUSH (x1), # 4 O'RING (x2), # 9 WEAR RING (x1), # 10 SEAL (x1)) | 85A-EE-1S |
| 11 | RETAINER | 85A-E-112 |
| 12 | THROTTLE VALVE ASSEMBLY (FROM SERIAL NO. MF 13,866) | 1007001 |
| 13 | SPRING THROTTLE VALVE (SUPERSEDED BY ITEM # 12) (UP TO SERIAL NO. MF 13,865) | 85A-E-114 |
| 14 | BOLT THROTTLE VALVE (SUPERSEDED BY ITEM # 12) (UP TO SERIAL NO. MF 13,865) | 85A-E-113 |
| 15 | THROTTLE VALVE (SUPERSEDED BY ITEM # 12) (UP TO SERIAL NO. MF 13,865) | 85A-E-115 |



POWER PACK COMPLETE ASSEMBLY

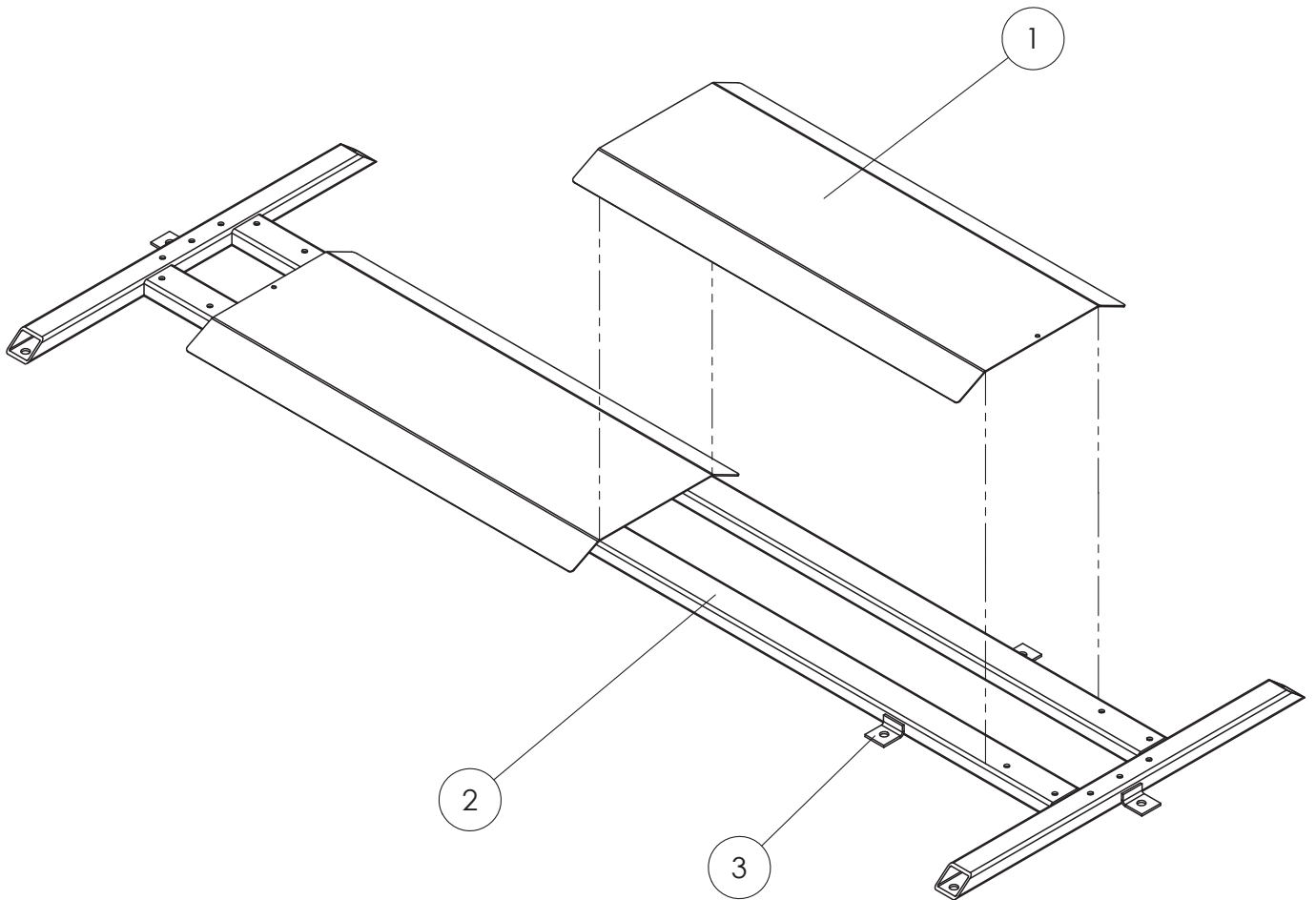
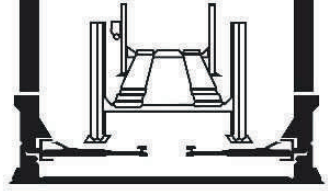
| ITEM # | PART DESCRIPTION | SPARE PART # |
|--------|---|---------------|
| 1 | CONDUIT LIMIT SWITCH | 85A-H-90 |
| 2 | CONDUIT ADAPTOR STRAIGHT M20 | 4488-PP-303 |
| 3 | BRACKET MOTOR LH | 85A-H-84 |
| 4 | BRACKET MOTOR RH | 85A-H-83 |
| 5 | BRACKET LIMIT SWITCH | 85A-H-82 |
| 6 | BOLT M10x45mm | 85A-H-86 |
| 7 | BRACKET STARTER | 85A-H-82A |
| 8 | CONDUIT MOTOR | 85A-H-91 |
| 9 | CONDUIT JUNCTION | 85A-H-153 |
| 10 | SADDLE CONDUIT | 85A-H-155 |
| 11 | CONDUIT STARTER | 85A-H-92 |
| 12 | SCREW M5x6mm | 85A-H-156 |
| 13 | BOLT M5x10mm | 85A-H-95 |
| 14 | SPLIT PIN M2.5x12mm | 85A-KL-33 |
| 15 | STARTER BOX-TP (415V 3 PHASE) | 85A-H-157 |
| | STARTER BOX-SP (240V SINGLE PHASE) | 85A-H-157SP |
| 16 | HANDLE LOWERING | 85A-F-197 |
| 17 | NUT M10 | 85A-H-87 |
| 18 | WASHER INTERNAL LOCK M10 | 85A-D-134 |
| 19 | SPACER | 85A-H-88 |
| 20 | LIMIT SWITCH | 85A-H-94 |
| 21 | WASHER INTERNAL LOCK M5 | 85A-H-96 |
| 22 | BOLT M5x10mm | 85A-H-95 |
| 23 | WIRING LOOM WITH SADDLES & GLANDS (415V 3 PHASE) | 85A-HH-LOOM |
| | WIRING LOOM WITH SADDLES & GLANDS (240V SINGLE PHASE) | 85A-HH-LOOMSP |



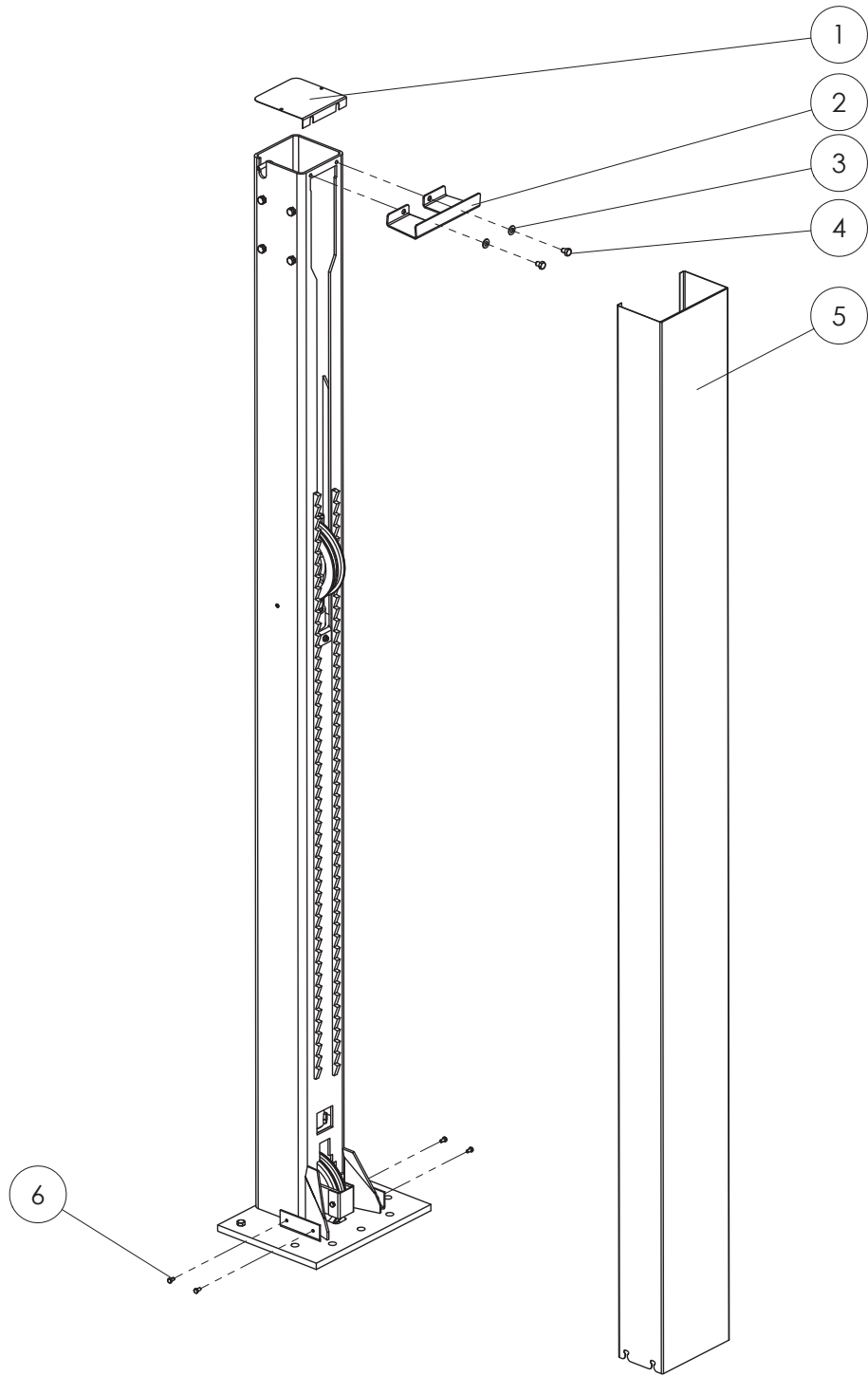
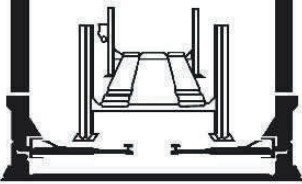
LOWERING HANDLE SPRING (SUPERSEDED)

MOTOR AND TANK ASSEMBLY

| ITEM # | PART DESCRIPTION | SPARE PART # |
|--------|---|----------------|
| 1 | NUT M10 | 85A-F-396 |
| 2 | MOTOR 415V 3 PHASE (INCLUDES COUPLING) | 85A-F-101TP |
| | MOTOR 240V SINGLE PHASE (INCLUDES COUPLING) | 85A-F-101SP |
| 3 | COUPLING MOTOR | 85A-F-96 |
| 4 | COUPLING RUBBER | 85A-F-97 |
| 5 | COUPLING PUMP | 85A-F-100 |
| 6 | NUT 1/4" ZINC | 85A-F-274 |
| 7 | BOLT M10x35mm | 85A-F-169 |
| 8 | SCREW TANK/LID 8Gx15mm | 85A-F-161 |
| 9 | HYDRAULIC PIPE (OIL TANK) | 85A-E-222 |
| 10 | NUT ADAPTOR HYDRAULIC MC6 | 85A-F-226 |
| 11 | OLIVE 3/8" | 85A-F-227 |
| 12 | ADAPTOR HYDRAULIC STRAIGHT MC6-6T | 85A-F-220 |
| 13 | PIN PIVOT | 85A-F-202 |
| 14 | BRACKET CONTROL VALVE | 85A-F-175 |
| 15 | RELEASE LEVER | 85A-F-201 |
| 16 | SPEED CLIP M5 | 85A-F-200 |
| 17 | FILTER | 85A-F-280 |
| 18 | BOLT M6x55mm | 85A-F-174 |
| 19 | WASHER SPRING 1/4"x1/16"x1/16" | 4488-PP-146 |
| 20 | CONTROL VALVE ASSEMBLY | 85A-F-208A |
| | CONTROL VALVE ASSEMBLY-RECONDITIONED | 85A-F-208A-REC |
| 21 | O RING 12mm | 85A-F-170 |
| 22 | ADAPTOR PUMP/VALVE | 85A-F-171 |
| 23 | TANK (EMPTY NO OIL) | 85A-F-163 |
| | TANK HYDRAULIC ASSEMBLY | 85A-F-163A |
| | OIL CASTROL AWH 46 (5 LITRES) | OIL/H-5L |
| 24 | SPEED NUT | 4488-PP-305 |
| 25 | BOLT 1/4"x1" (ZINC) | 85A-F-273 |
| 26 | HYDRAULIC PUMP | 85A-F-167 |
| 27 | TUBE PICK UP | 85A-F-166 |
| 28 | BOLT M6x35mm | 85A-F-164 |
| 29 | ADAPTOR PUMP/PICK UP | 85A-F-165 |
| 30 | TANK LID | 85A-F-162 |
| 31 | BREATHER | 85A-F-158 |
| 32 | BELL HOUSING | 85A-F-168 |
| 33 | SPRING LOWERING HANDLE (SUPERSEDED) | 85A-F-190 |
| | POWER PACK ASSEMBLY (415V 3 PHASE) | 85A-F-101TP |
| | POWER PACK ASSEMBLY (240V SINGLE PHASE) | 85A-F-101SP |

**BASE ASSEMBLY**

| ITEM # | PART DESCRIPTION | SPARE PART # |
|--------|--------------------------|--------------|
| 1 | FLOORPLATE (2 PER HOIST) | 85A-A-218 |
| 2 | BASE MEMBER | 85A-A-219 |
| 3 | BRACKET BASE ANCHOR | 85A-A-219B |



COVERS ASSEMBLY

| ITEM # | PART DESCRIPTION | SPARE PART # |
|--------|------------------------|--------------|
| 1 | PLATE TOP | 85A-B-81 |
| 2 | BRACKET COVER MOUNTING | 85A-B-151 |
| 3 | WASHER FLAT M10 | 85A-D-132 |
| 4 | BOLT M10x12mm | 85A-C-41 |
| 5 | COVER (ONE SIDE) | 85A-B-14/1 |
| | COVER SET (BOTH SIDES) | 85A-B-14 |
| 6 | BOLT M6x12mm | 85A-D-11 |

STICKERS

| ITEM # | DESCRIPTION | SPARE PART # |
|--------|---|--------------|
| 1 |  | STICKERS |
| 2 |  | 85ADECAL |
| 3 |  | ON/OFF |
| 4 |  | 85AMANUAL |
| 5 |  HOIST REQUIRES 5 LITRES OF OIL | OIL/H-5L |

415 VAC 3 PHASE to 240 VAC SINGLE PHASE CONVERSION

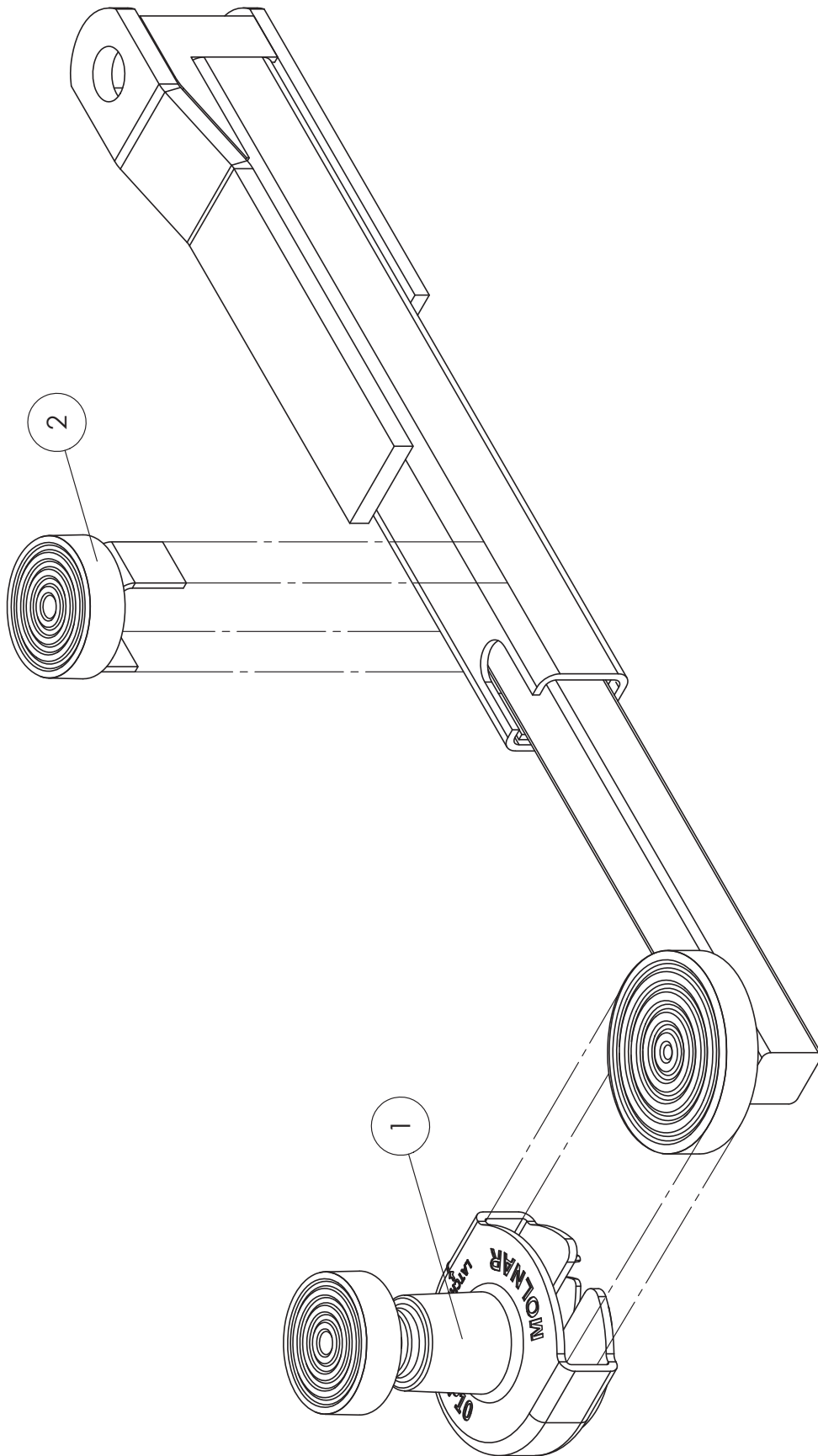
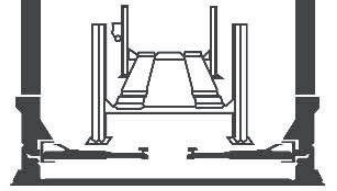
MOTOR 240V SINGLE PHASE (INCLUDES COUPLING). PART NO. 85A-F-101SP

USE EXISTING MOTOR MOUNT BOLTS

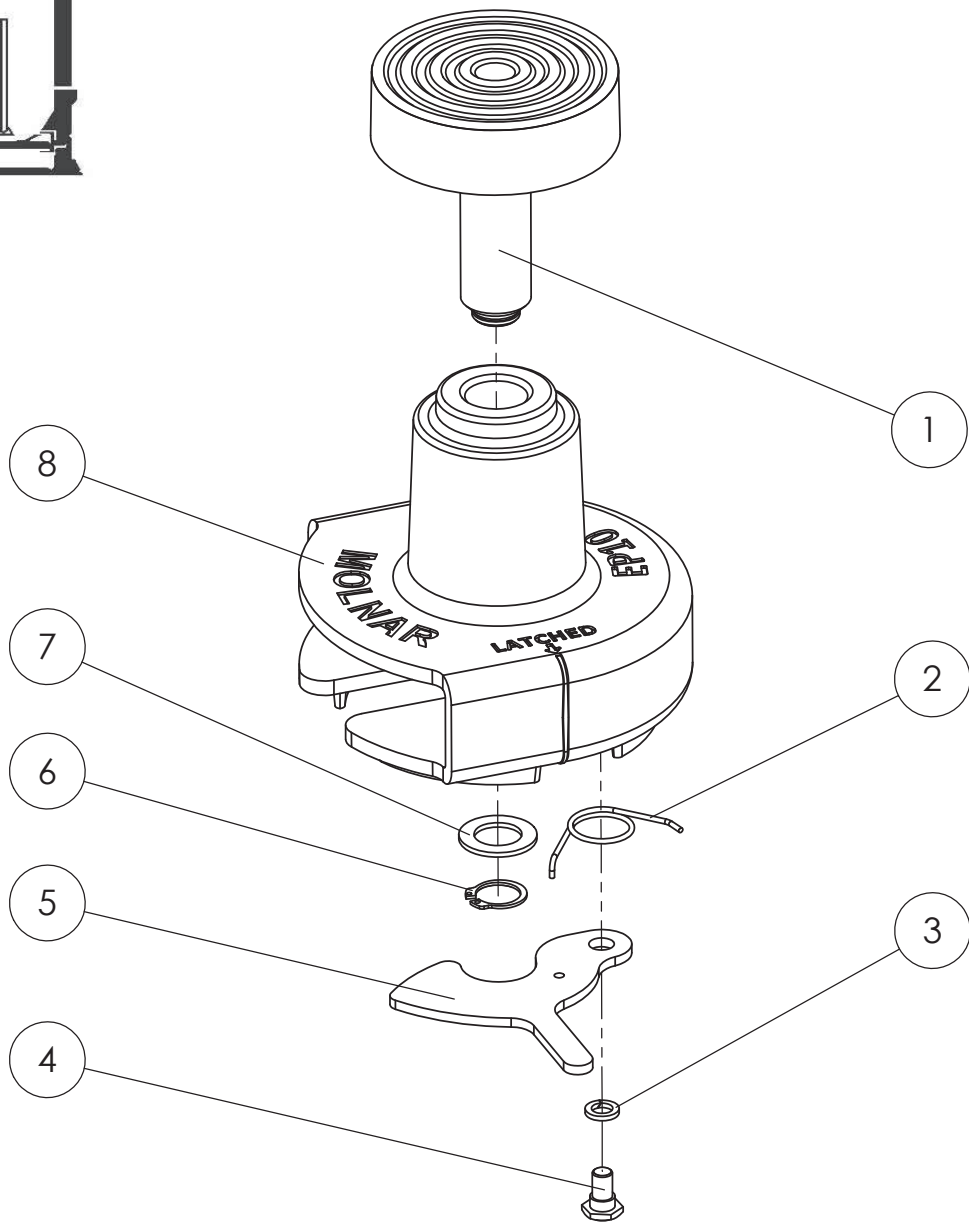
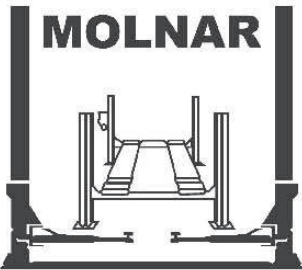
MOLNAR ENGINEERING STRONGLY ADVISES CONSULTING A QUALIFIED ELECTRICIAN BEFORE COMMENCING CONVERSION

ELECTRICIAN

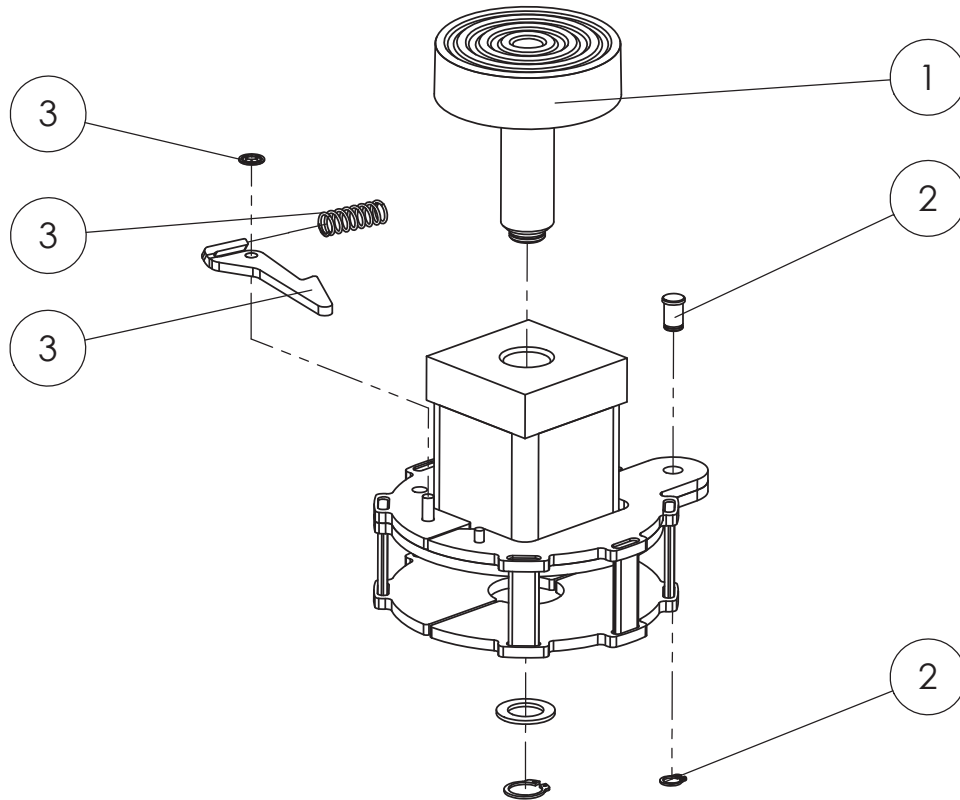
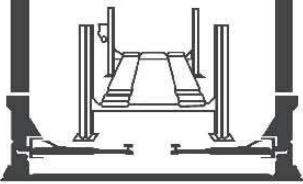
- HOIST MUST BE WIRED BY A QUALIFIED ELECTRICIAN ACCORDING TO AS3000 OR SUPPLY AUTHORITY REGULATIONS
- MINIMUM SUPPLY CIRCUIT RATING REQUIRED 20 AMP
- MODIFY WIRING ON HOIST TO SUIT SINGLE PHASE (PART NO. 85A-HH-LOOMSP)
- EXCHANGE 415VAC CONTACTOR TO A 240VAC CONTACTOR INSIDE THE STARTER BOX OR REPLACE ENTIRE 415VAC STARTER BOX WITH 240VAC STARTER BOX (STARTER BOX-SP (240V SINGLE PHASE) PART NO. 85A-H-157SP)



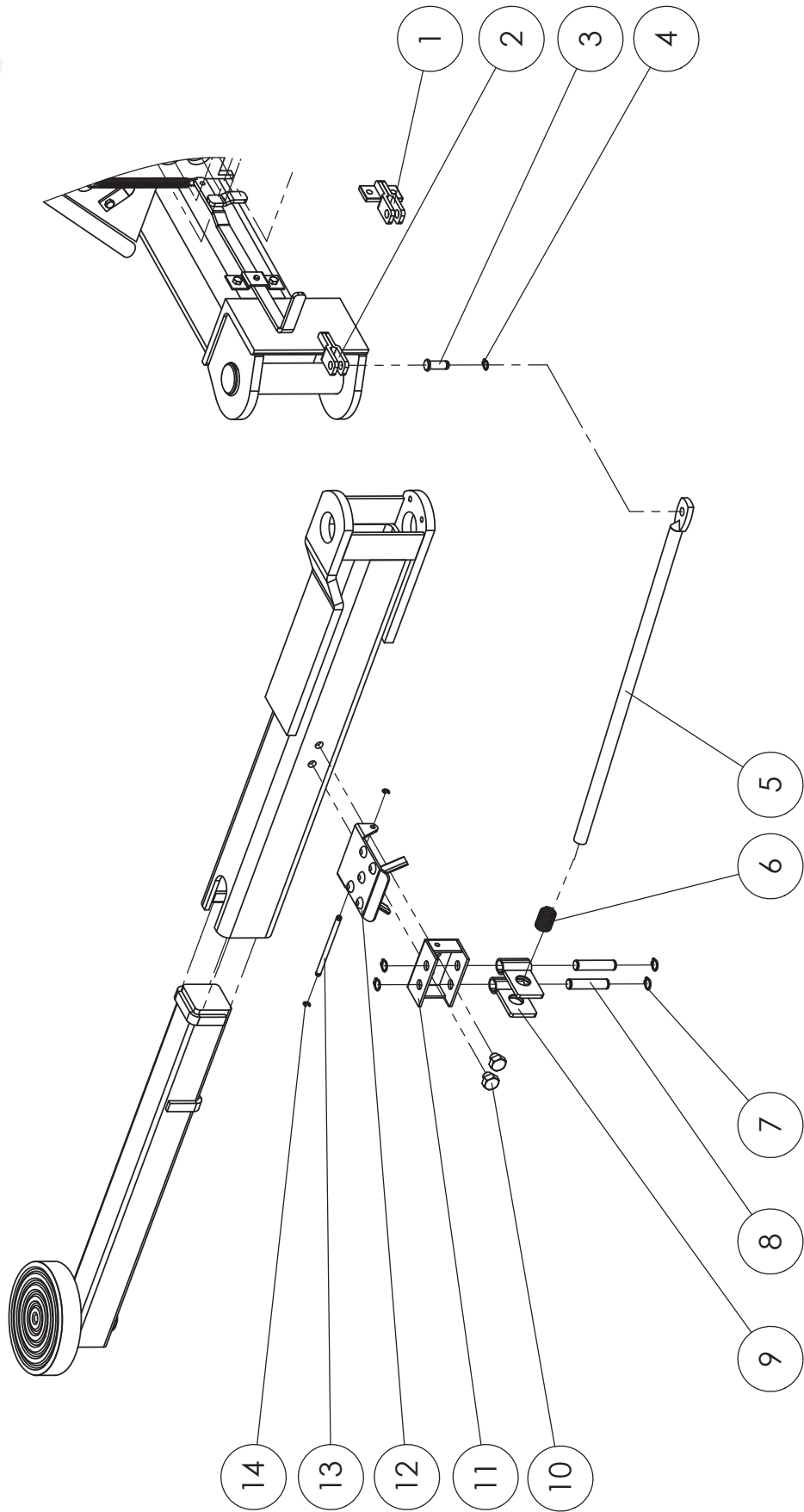
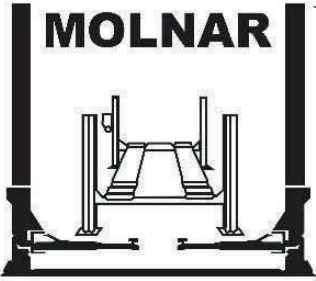
| ITEM # | PART DESCRIPTION | SPARE PART # |
|--------|------------------|--------------|
| 1 | EXTENSION PAD | EP10 |
| 2 | STABILIZER PAD | J3AB |



| ITEM # | PART DESCRIPTION | SPARE PART # |
|--------|---|--------------|
| 1 | PICK UP PAD (DIAMETER 100mm) SCREW IN | J3PUP |
| 2 | SPRING LATCH | 5030001 |
| 3 | WASHER SPRING M8 | 5017001 |
| 4 | BOLT SHOULDER M8 | 5011001 |
| 5 | LEVER LATCH | 5006001 |
| 6 | CIRCLIP 19mm (DIN 471-19) | JB87-10 |
| 7 | WASHER (ZINC PLATED) | 5017002 |
| 8 | EP10 BODY | 5013001 |
| | LATCH ASSEMBLY EP10 (INCL. ITEMS # 2 SPRING (x1), # 3 WASHER (x1), # 4 BOLT (x1), # 5 LEVER (x1)) | 5026001 |

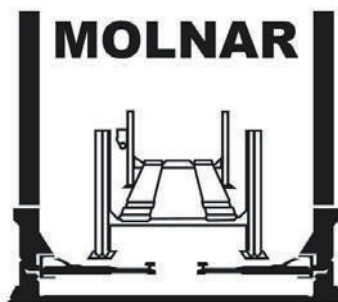


| ITEM # | PART DESCRIPTION | SPARE PART # |
|--------|--|--------------|
| 1 | PICK UP PAD (DIAMETER 100mm) SCREW IN | J3PUP |
| 2 | EP02 LATCH PIN ASSEMBLY INCLUDES PIVOT PIN AND CIRCLIP 10mm | EP02-L/P |
| 3 | EP02 LATCH ASSEMBLY INCLUDES LATCH, SPRING AND SPEED CLIP | EP02-L/A |



FOOT OPERATED ARM LOCK (SUPERSEDED)

| ITEM # | PART DESCRIPTION | SPARE PART # |
|--------|--|----------------|
| 1 | BRACKET PIVOT ARM (BOLT ON) | 85A-J-48B |
| 2 | BRACKET PIVOT ARM (WELD ON) | 85A-J-48W |
| 3 | PIN PIVOT LOCKING ARM ROD | 85A-J-49 |
| 4 | CIRCLIP 10mm (DIN 471-10) | 85A-J-46 |
| 5 | ROD LOCKING ARM | 85A-J-61 |
| 6 | SPRING | 85A-J-59 |
| 7 | CIRCLIP 12mm (DIN 471-12) | 85A-J-56 |
| 8 | PIN LOCKING PLATE PIVOT | 85A-J-55 |
| 9 | LOCKING PLATE | 85A-J-58 |
| 10 | BOLT 7/16" UNF X 3/8" | 85A-J-60 |
| 11 | BRACKET LOCKING ARM | 85A-J-57 |
| 12 | FOOT PEDAL | 85A-J-354 |
| 13 | PIN FOOT PEDAL | 85A-J-356 |
| 14 | E CLIP 4mm | 85A-J-355 |
| | ARM LOCKING KIT x4 (INCL. ITEMS # 2 BRACKET PIVOT (WELD ON) (x4), # 3 PIN PIVOT LOCKING ARM ROD (x4), # 4 CIRCLIP 10mm (x4), # 5 ROD LOCKING ARM (x4), # 6 SPRING (x4), # 7 CIRCLIP 12mm (x4), # 8 PIN LOCKING PLATE PIVOT (x8), # 9 LOCKING PLATE (x8), #10 BOLT (x8), # 11 BRACKET LOCKING ARM (x4)) | 85A-J-8550 |
| | ARM LOCKING KIT x1 (INCL. ITEMS # 2 BRACKET PIVOT (WELD ON) (x1), # 3 PIN PIVOT LOCKING ARM ROD (x1), # 4 CIRCLIP 10mm (x1), # 5 ROD LOCKING ARM (x1), # 6 SPRING (x1), # 7 CIRCLIP 12mm (x1), # 8 PIN LOCKING PLATE PIVOT (x2), # 9 LOCKING PLATE (x2), #10 BOLT (x2), # 11 BRACKET LOCKING ARM (x1)) | 85A-J-85501/4 |
| | ARM LOCKING KIT FOOT OPERATED x4 (INCL. ALL PARTS LISTED ABOVE PLUS ITEMS # 12 FOOT PEDAL (x4), # 13 PIN FOOT PEDAL (x4), # 14 E CLIP 4mm (x8)) | 85A-J-85357 |
| | ARM LOCKING KIT FOOT OPERATED x1 (INCL. ALL PARTS LISTED ABOVE PLUS ITEMS # 12 FOOT PEDAL (x1), # 13 PIN FOOT PEDAL (x1), # 14 E CLIP 4mm (x2)) | 85A-J-853571/4 |



MANUFACTURED BY:

MOLNAR ENGINEERING PTY. LTD.

A.B.N. 54 007 740 794

16-20 Coglin Street, Brompton, S.A. 5007 AUSTRALIA
Telephone: (08) 8346 6893, (08) 8346 6894, (08) 8346 8006
Fax: (08) 8346 0097, Web: www.molnarhoists.com.au
Email: spareparts@molnarhoists.com.au